

2022年度学修アンケート回答状況

12月3日時点

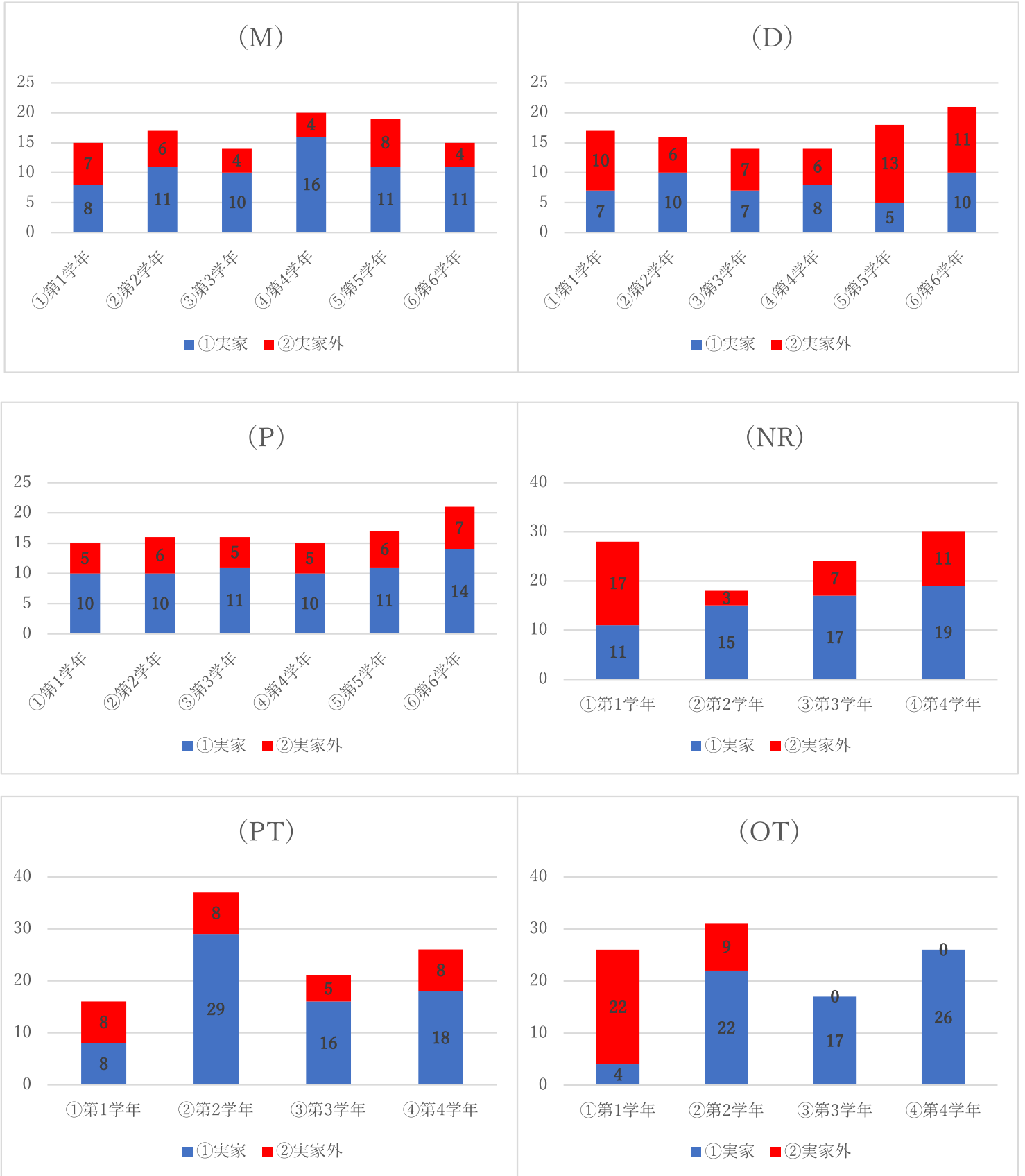
回答期間：12月12日～1月28日

対象：全学部生

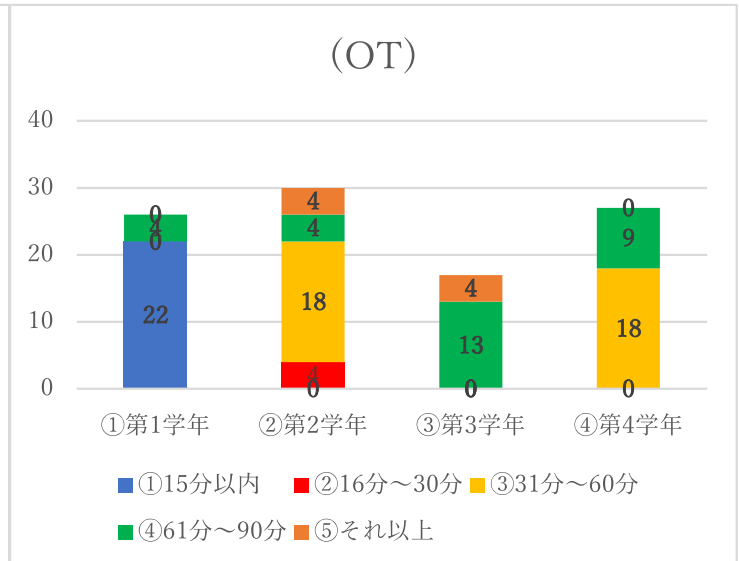
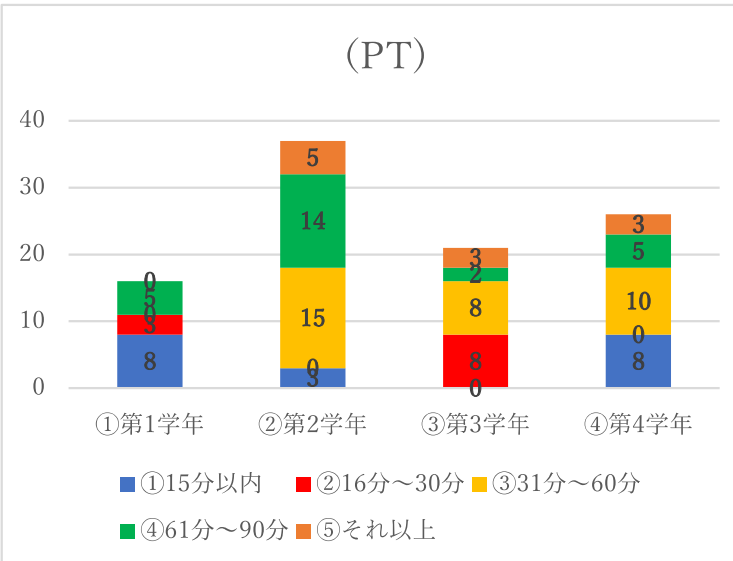
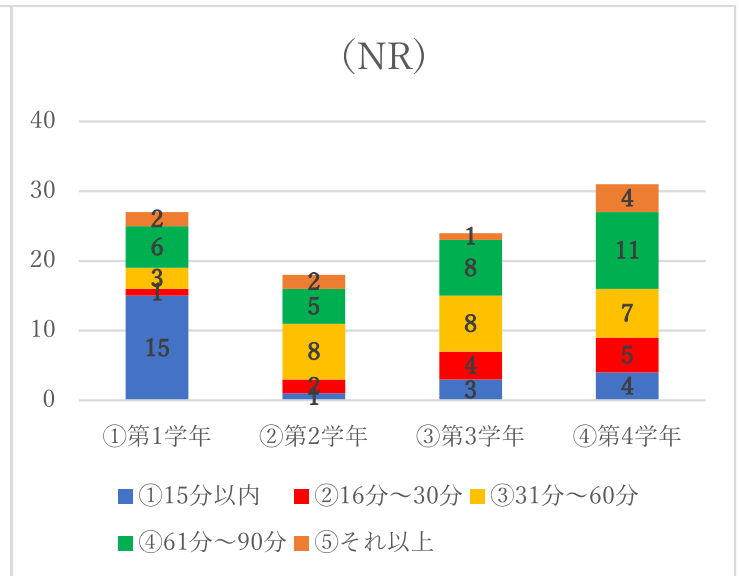
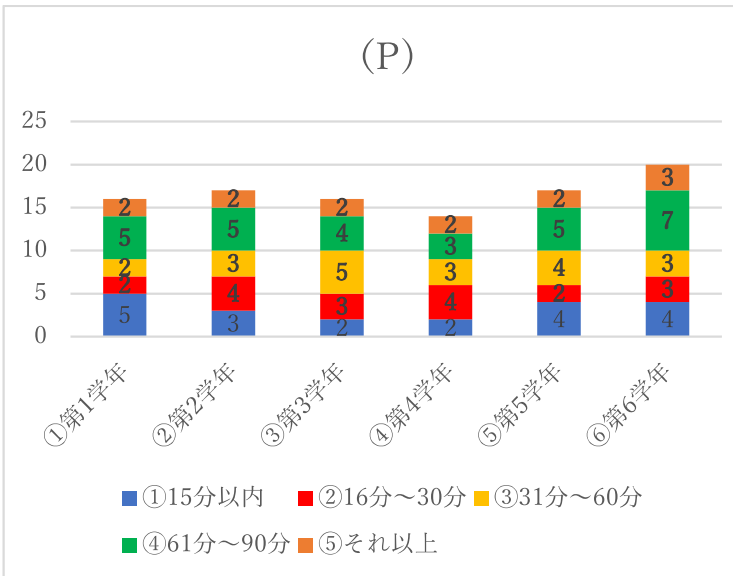
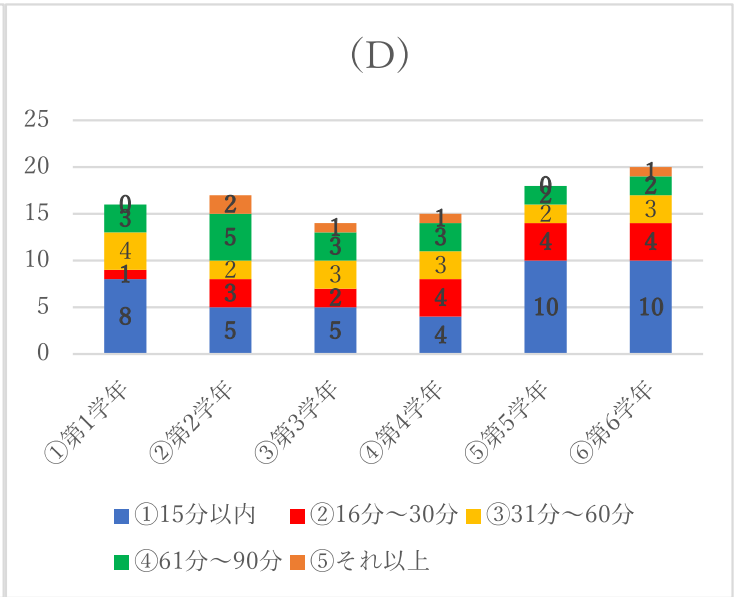
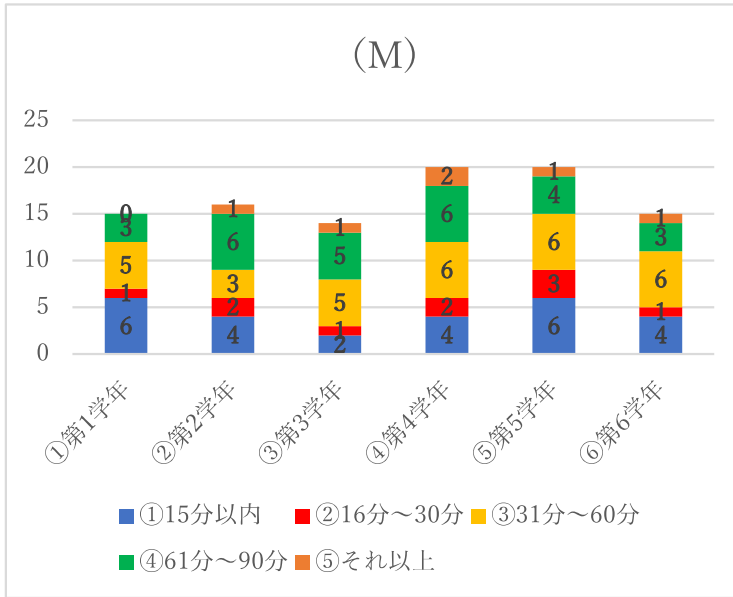
実施方法：Googleフォーム

	①第1学年			②第2学年			③第3学年			④第4学年			⑤第5学年			⑥第6学年			総計		
	現員	回答数	回答率	現員	回答数	回答率	現員	回答数	回答率	現員	回答数	回答率	現員	回答数	回答率	現員	回答数	回答率	現員	回答数	回答率
医学部	128	41	32%	129	46	36%	119	39	33%	109	57	52%	124	53	43%	122	43	35%	731	279	38%
歯学部	98	34	35%	108	35	32%	88	29	33%	99	29	29%	95	36	38%	100	42	42%	588	205	35%
薬学部	206	75	36%	230	83	36%	182	80	44%	197	73	37%	166	91	55%	181	103	57%	1,162	505	43%
看護学科	103	47	46%	114	31	27%	94	40	43%	105	51	49%							416	169	41%
理学療法学科	37	6	16%	37	14	38%	37	8	22%	35	10	29%							146	38	26%
作業療法学科	17	6	35%	17	7	41%	19	4	21%	15	6	40%							68	23	34%
総計	589	209	35%	635	216	34%	539	200	37%	560	226	40%	385	180	47%	403	188	47%	3,111	1,219	39%

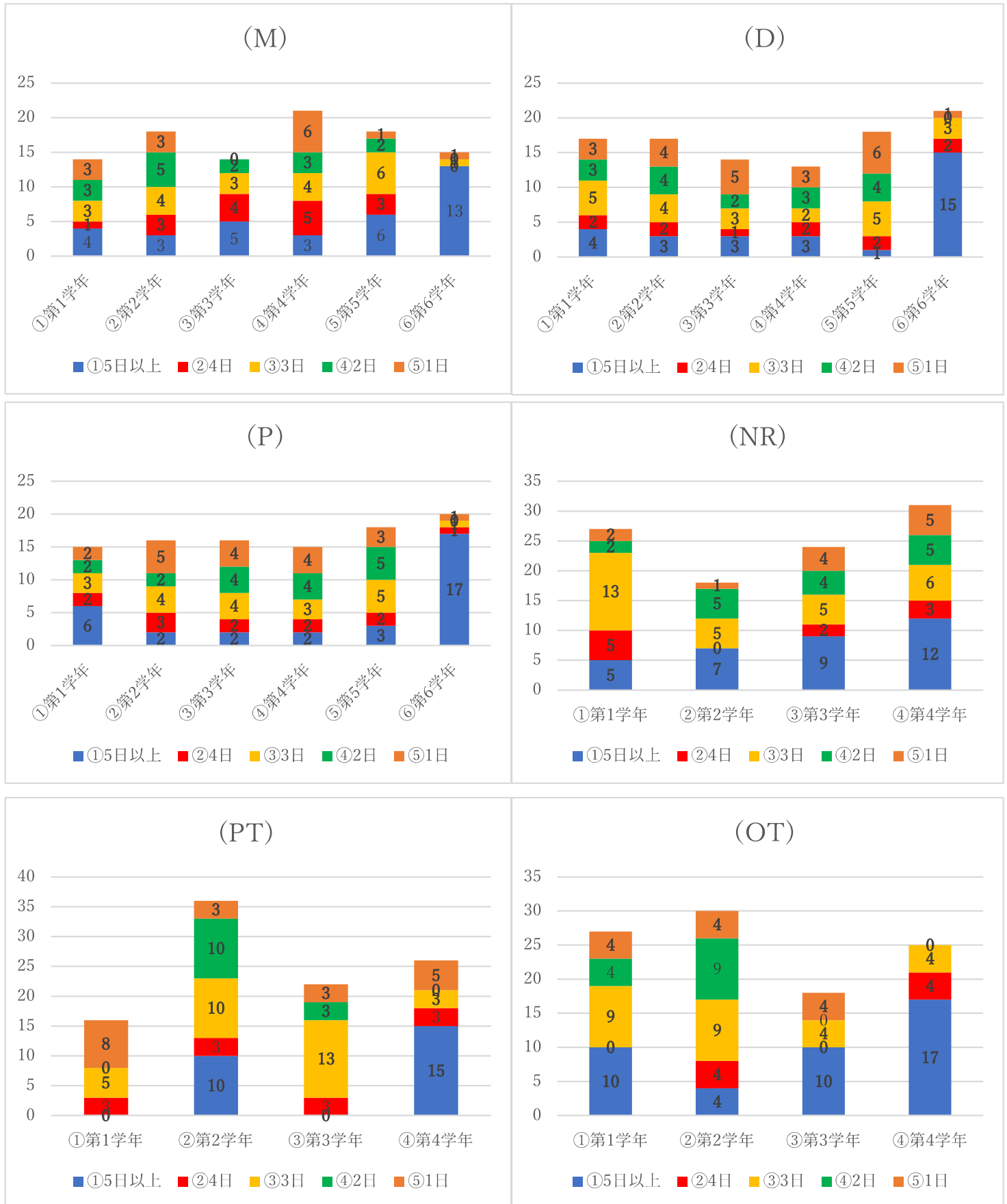
5.実家通学ですか？



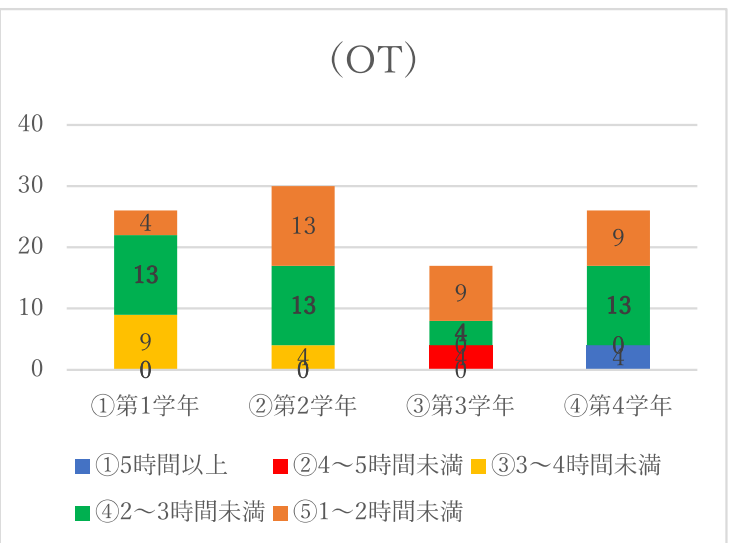
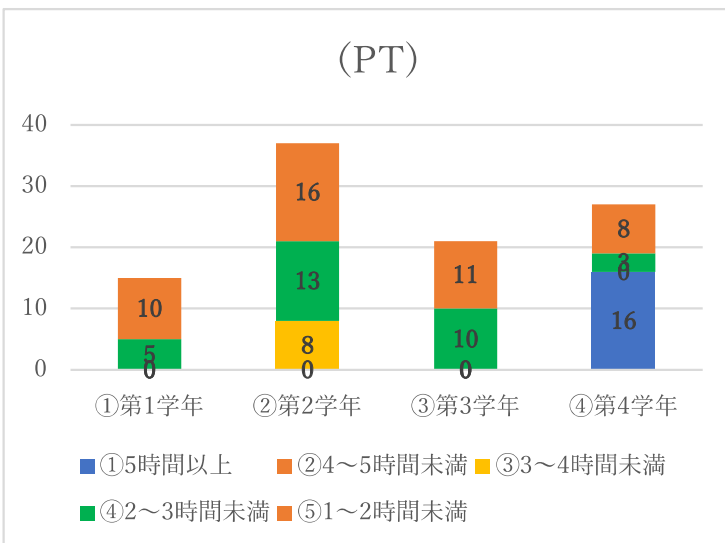
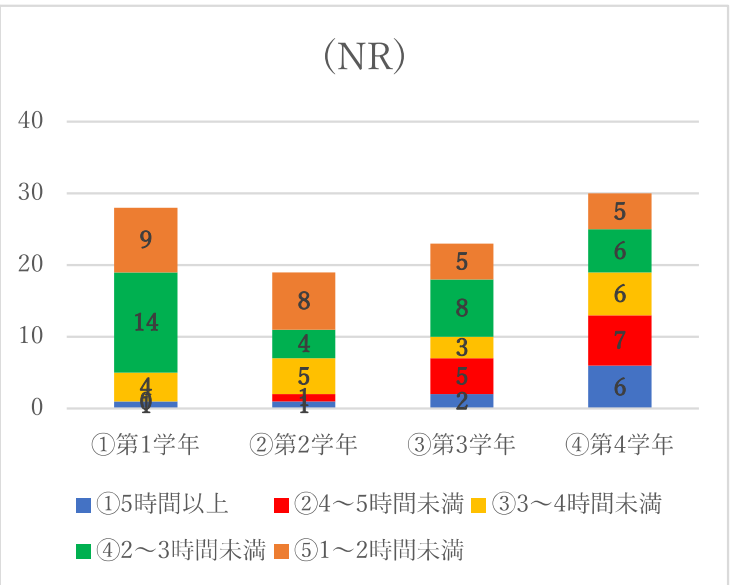
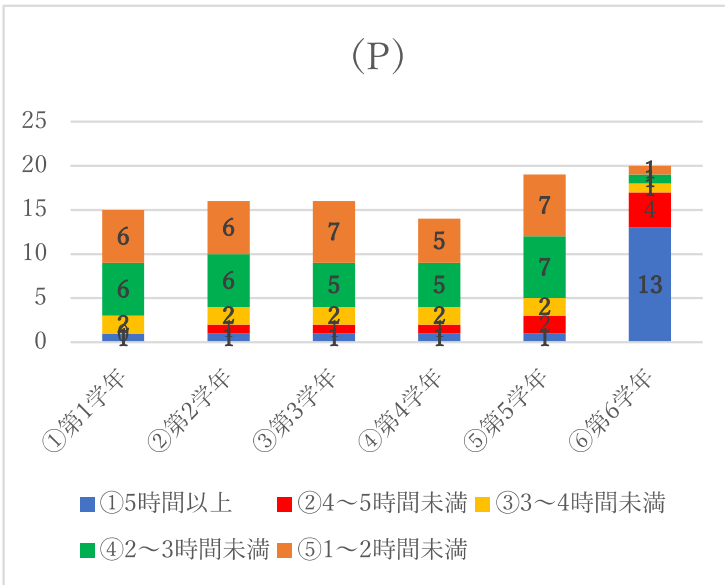
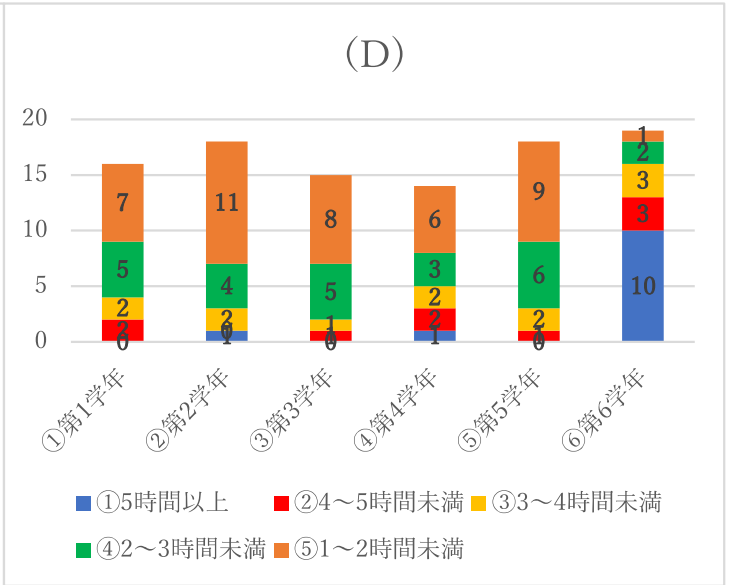
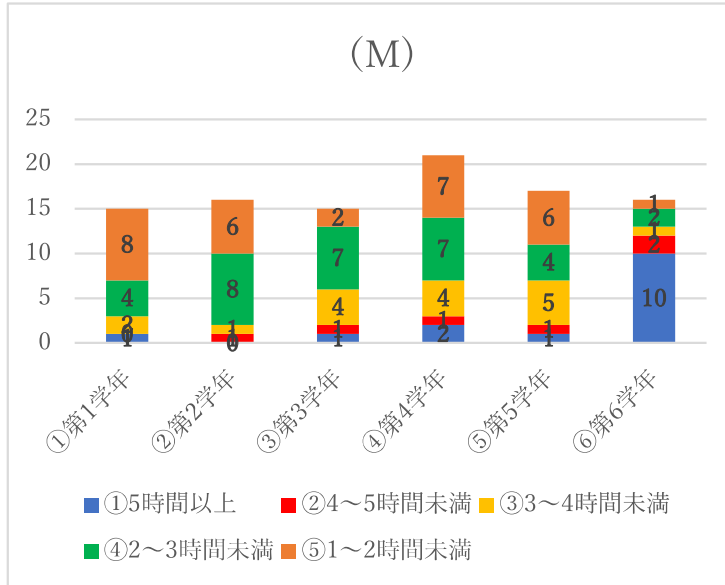
6.通学時間(片道)はどのくらいですか？



7. 普段、授業以外に、平均して週に何日程度、学修しますか？



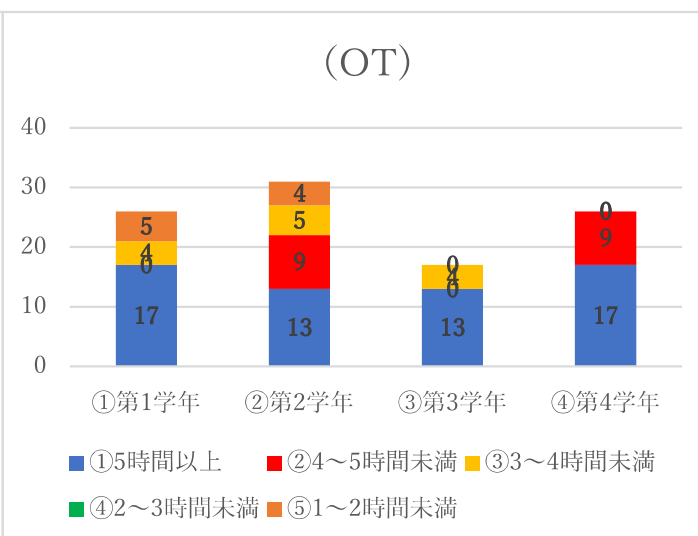
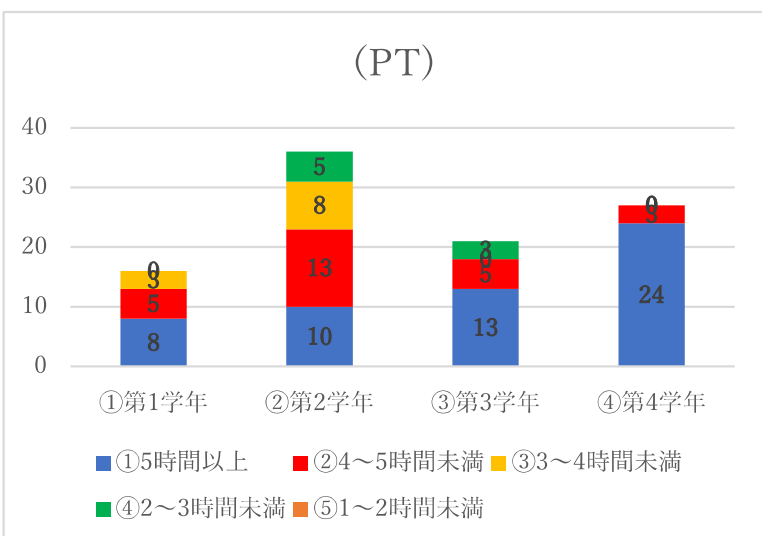
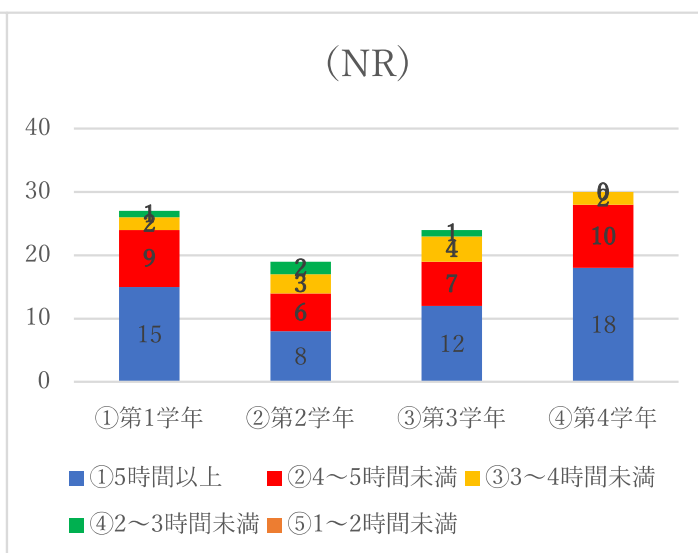
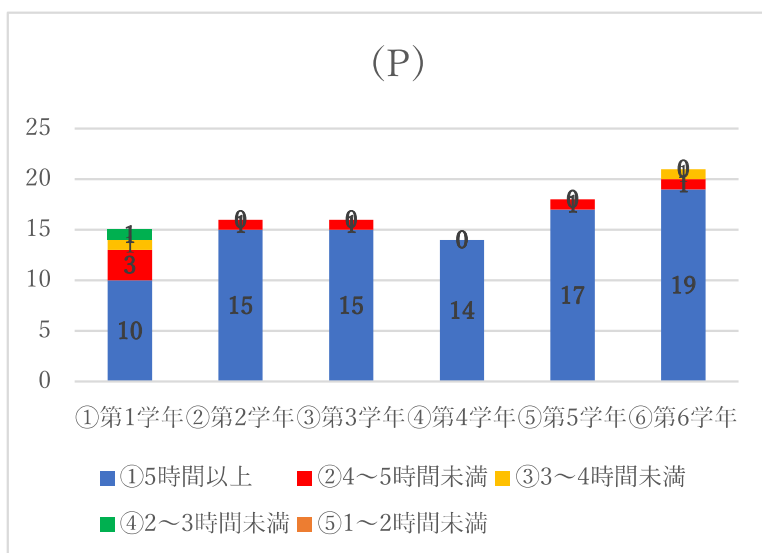
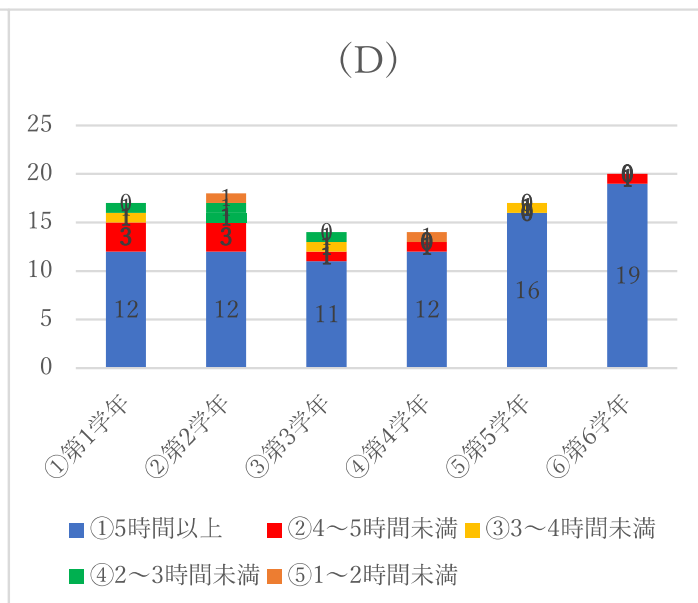
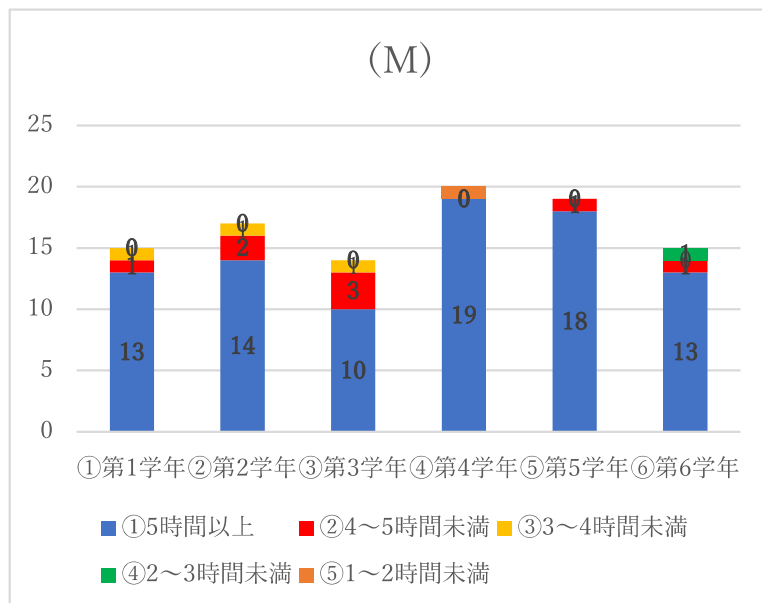
8.Q7の学修日の1日当たりの学修時間は、1日にどのくらいですか？



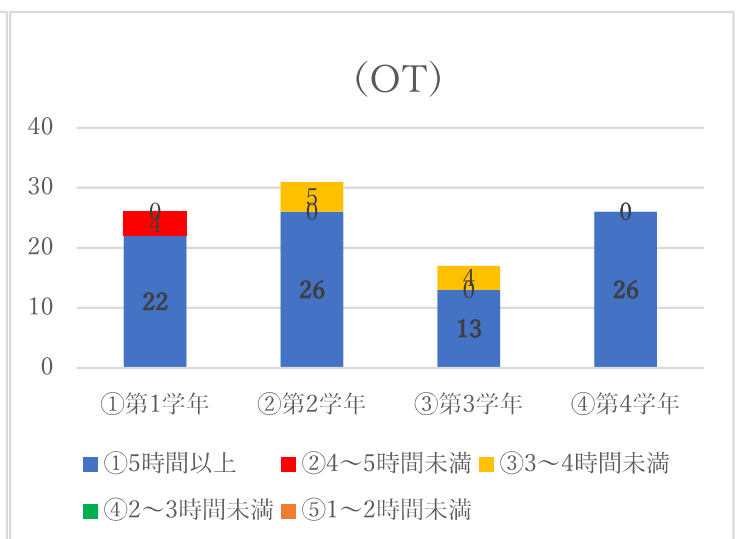
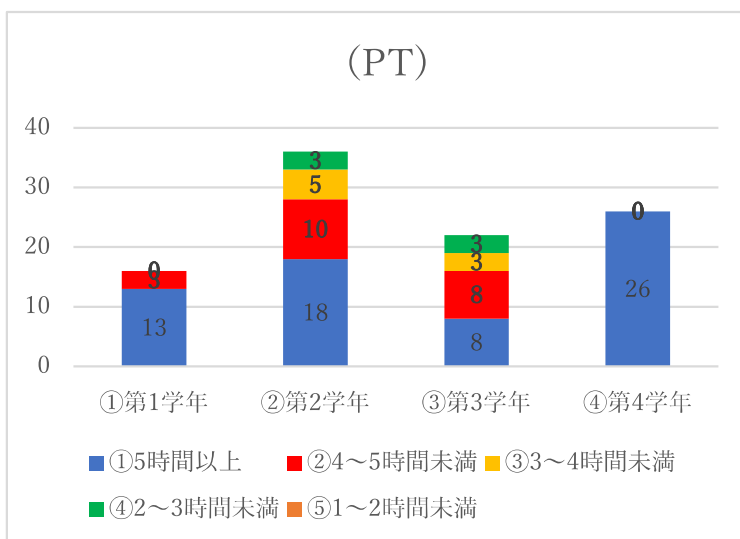
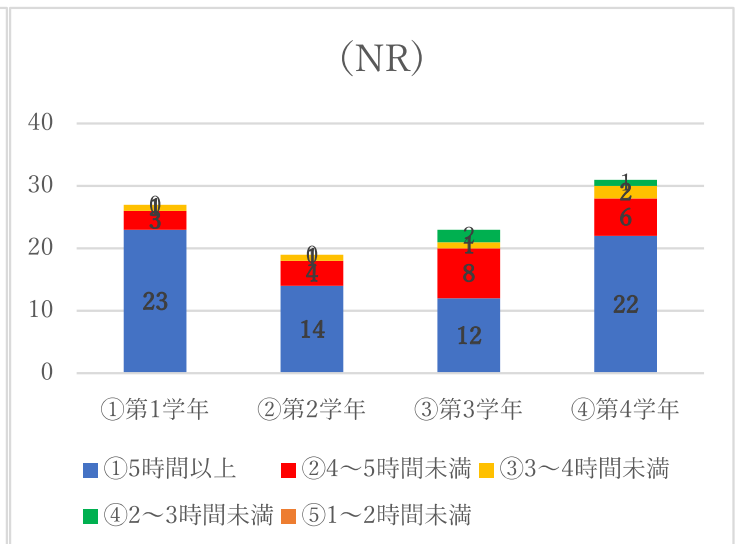
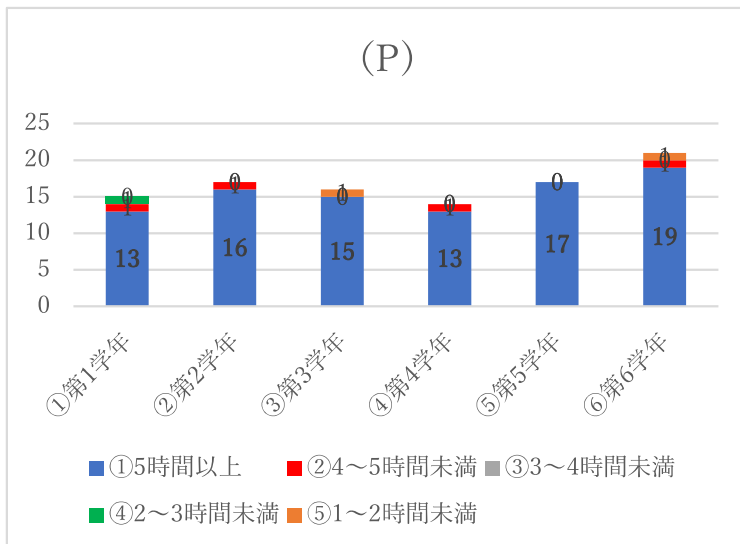
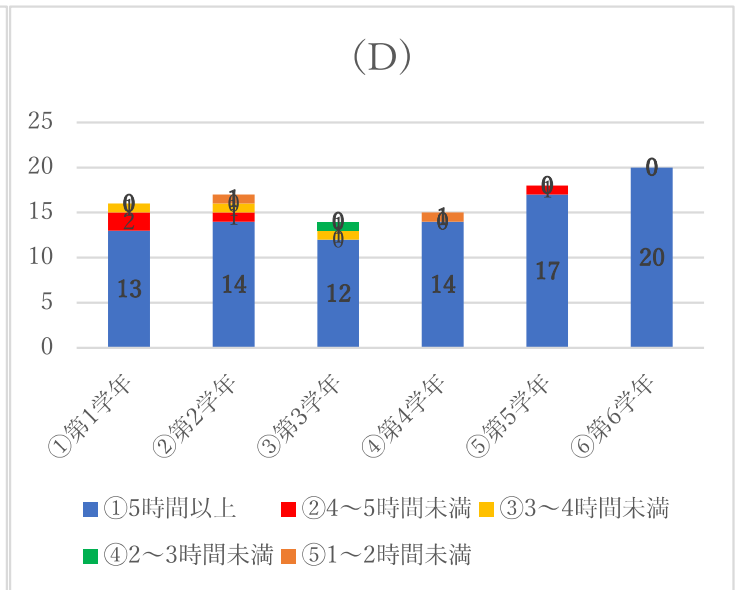
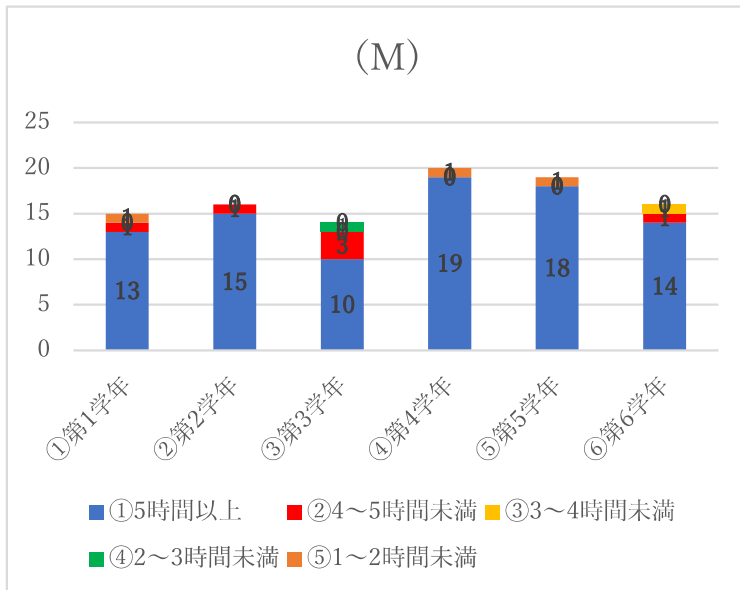
9. 普段の1日の授業を受けている時間以外の理想的な学修時間はどのくらい必要だと思いますか？



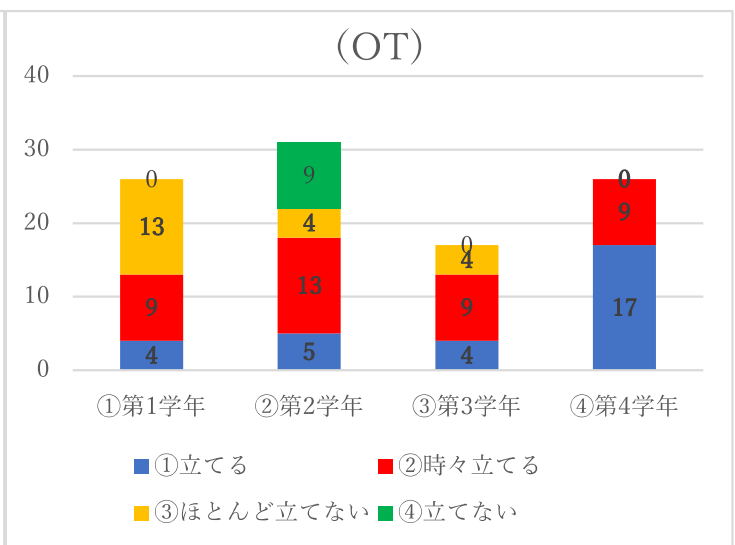
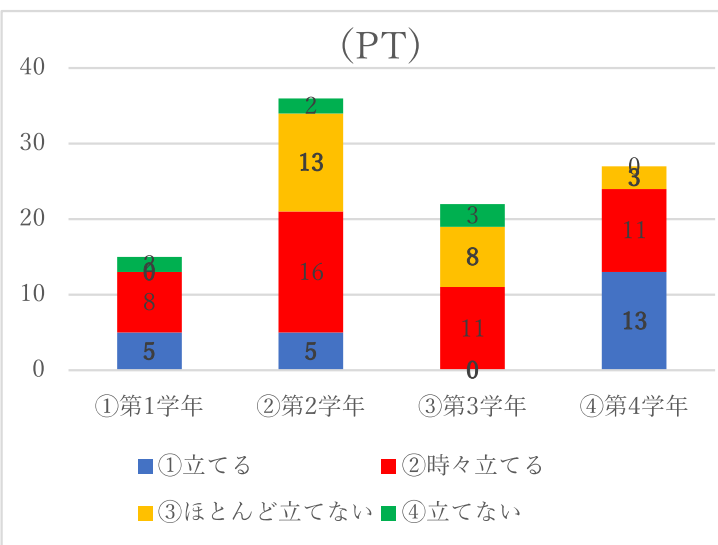
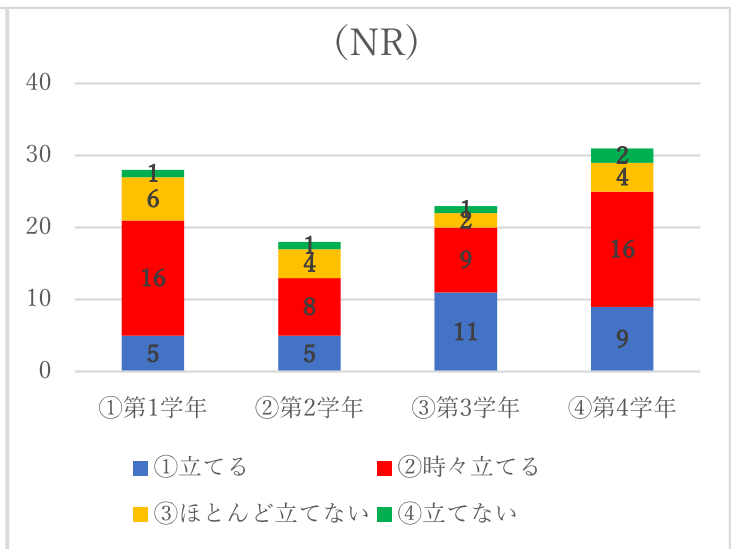
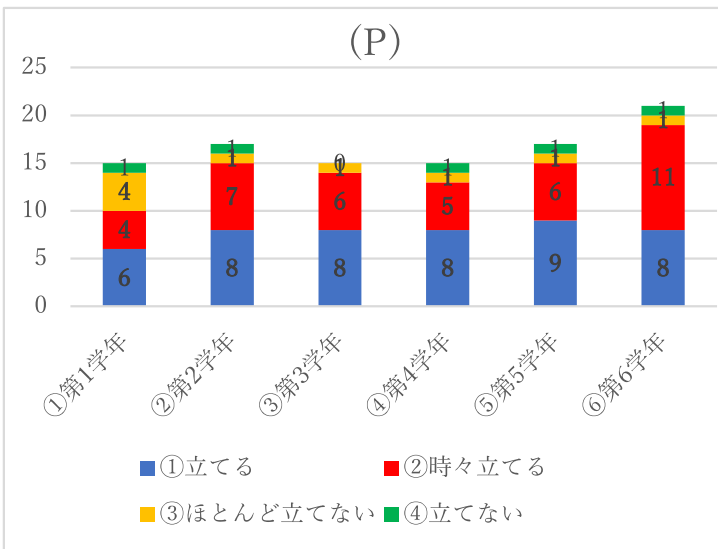
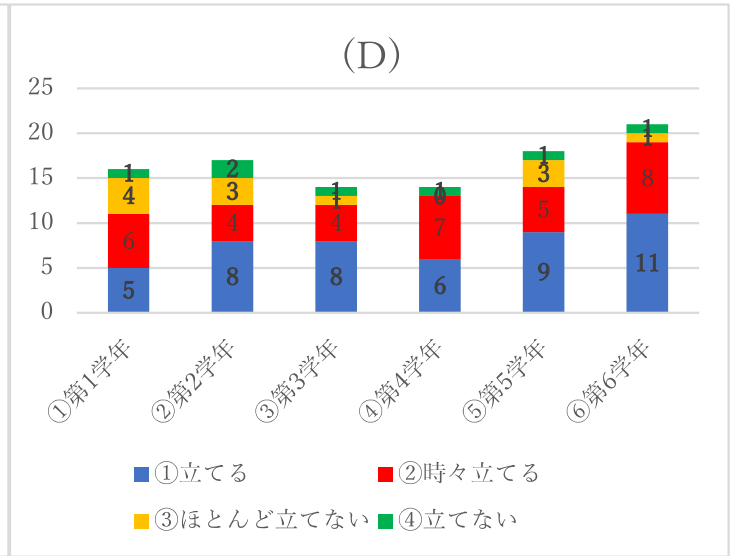
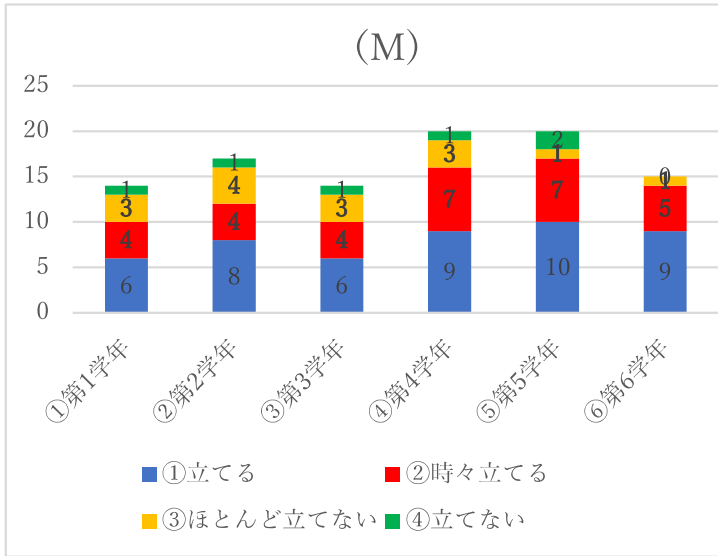
10.試験期間中の1日の学修時間はどのくらいですか？



11.試験期間中の1日の理想的な学修時間はどれくらい必要だと思いますか？

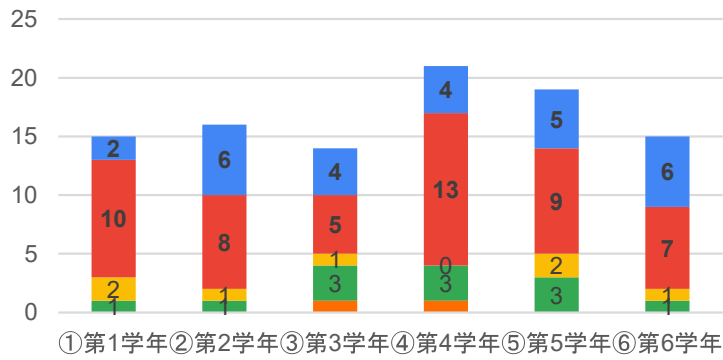


12.試験前には学修計画を立てていますか？

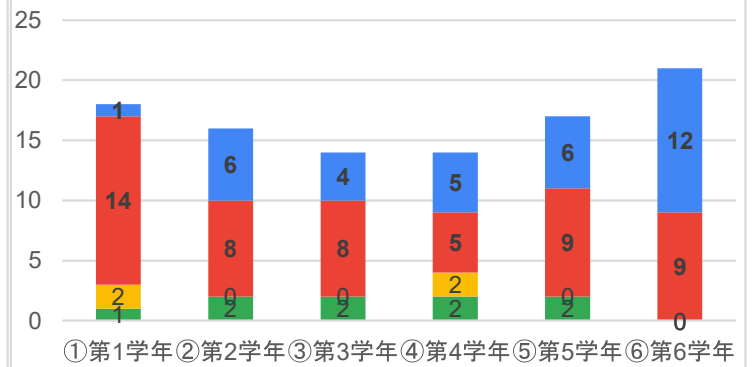


13.学修場所はどこを利用しますか？

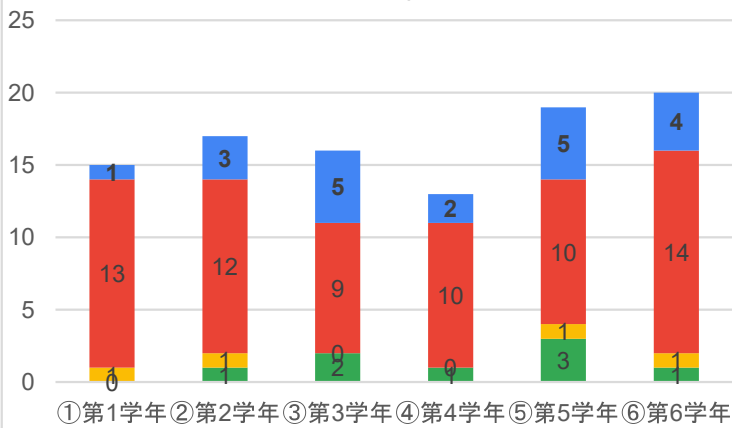
(M)



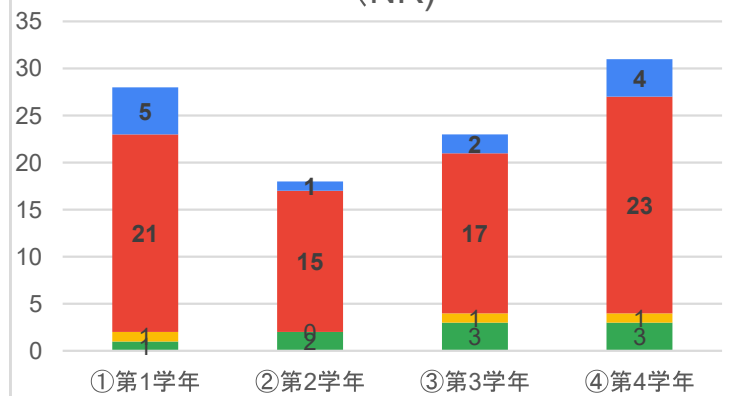
(D)



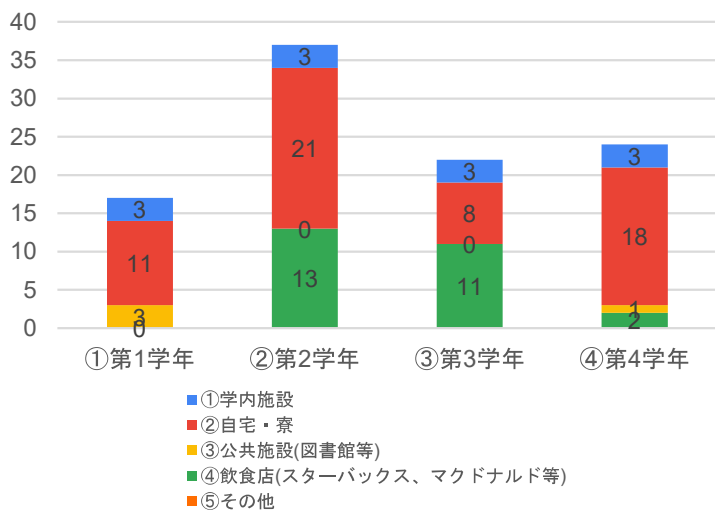
(P)



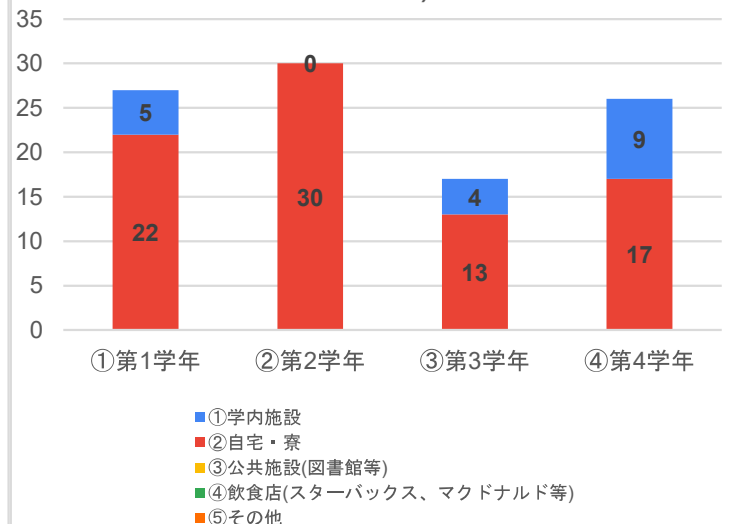
(NR)



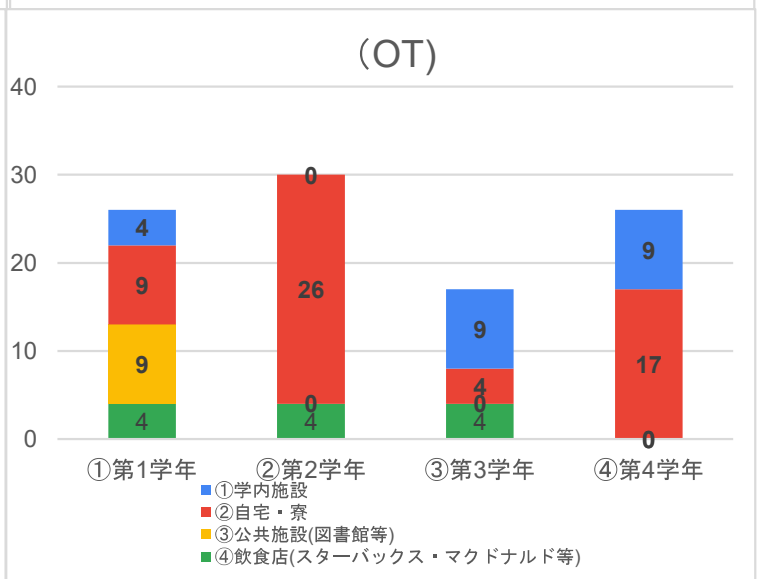
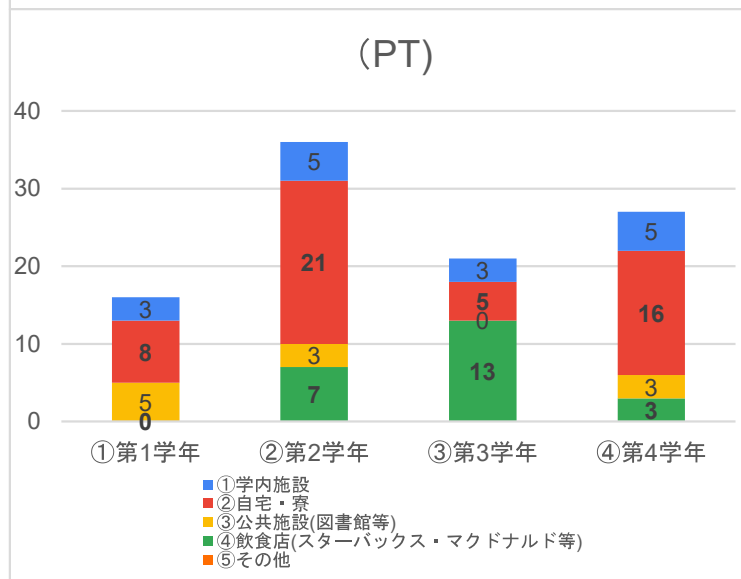
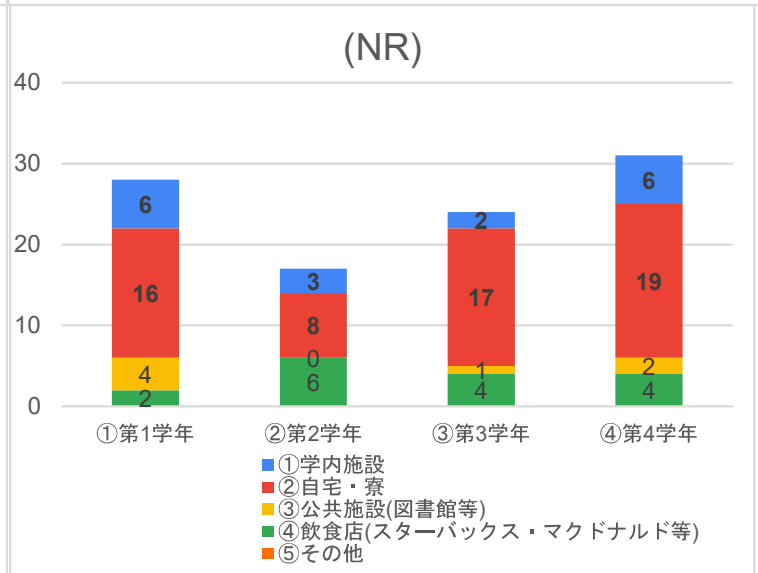
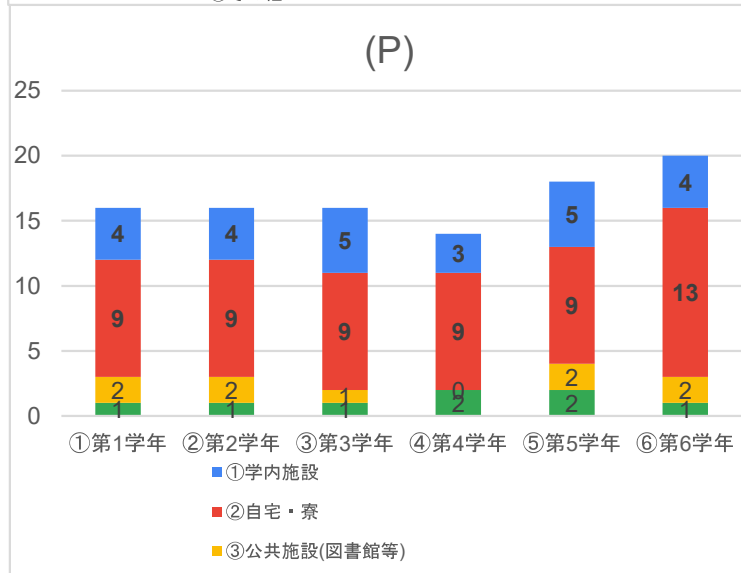
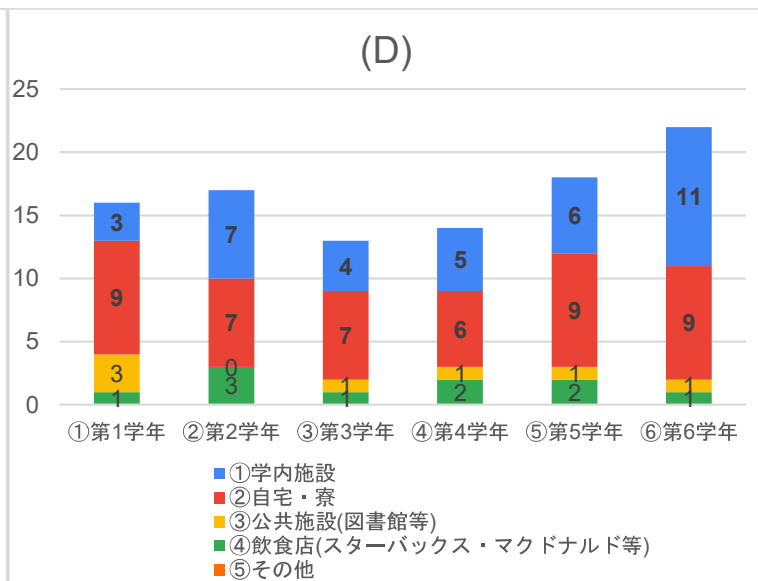
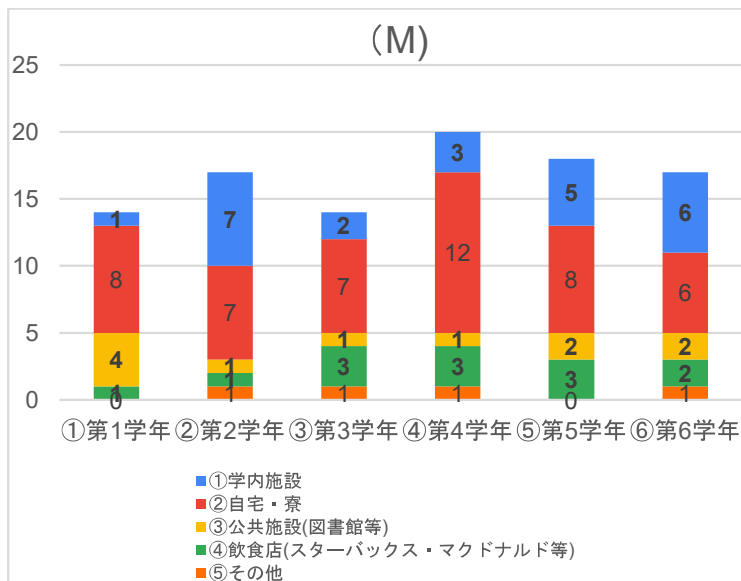
(PT)



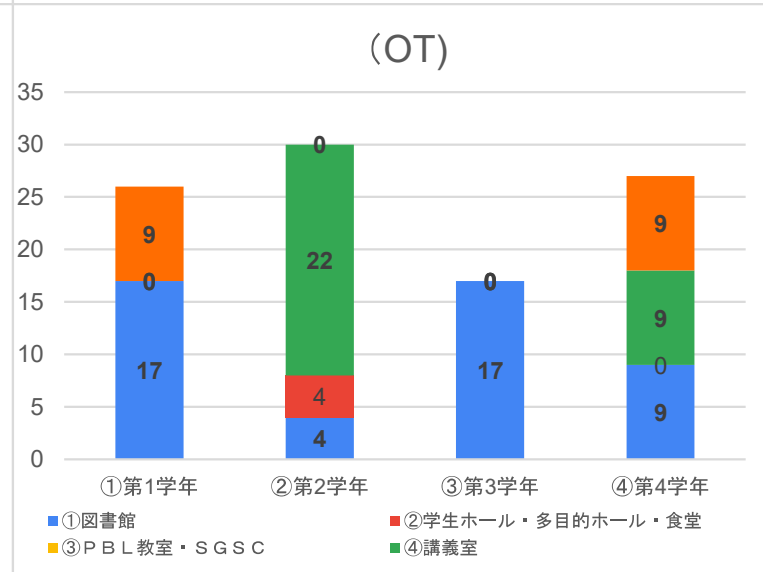
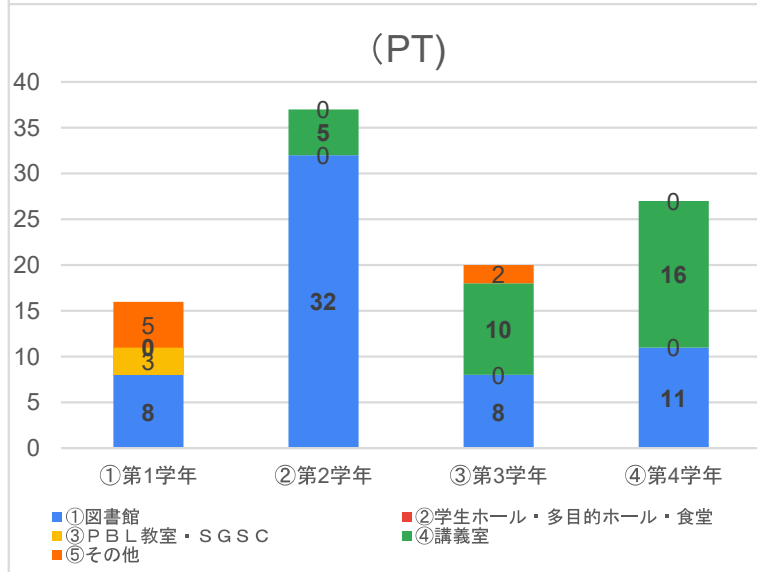
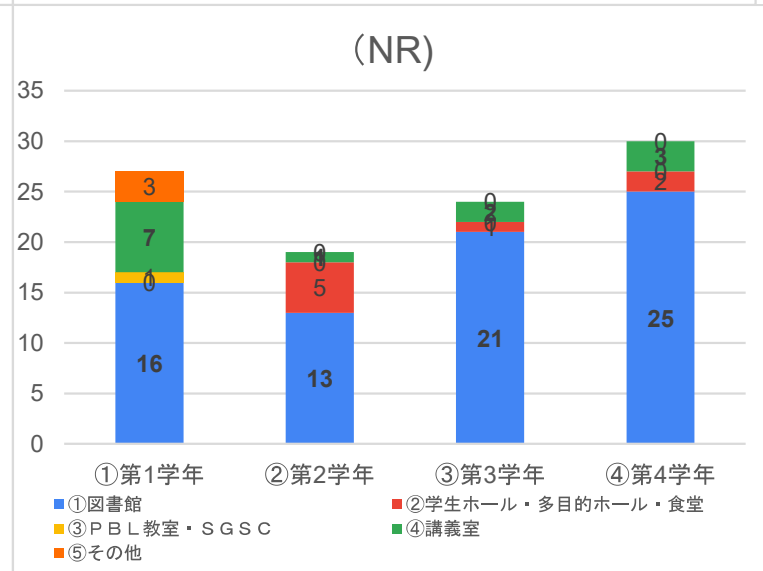
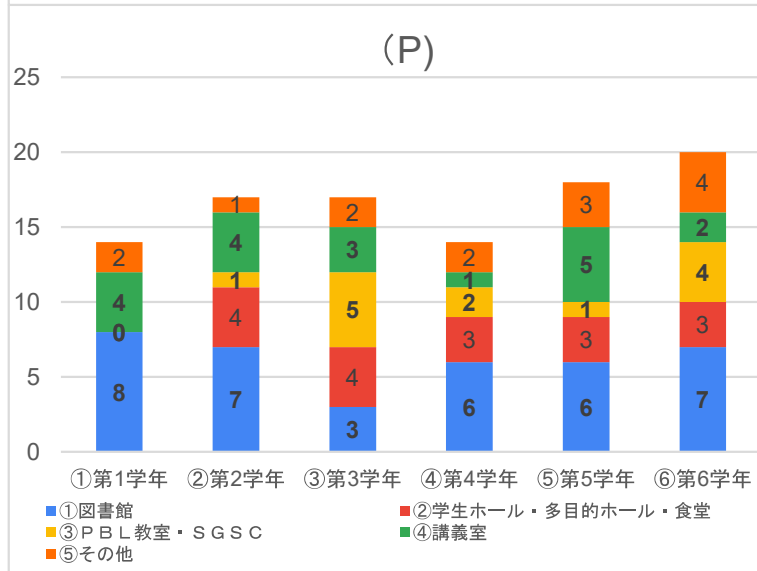
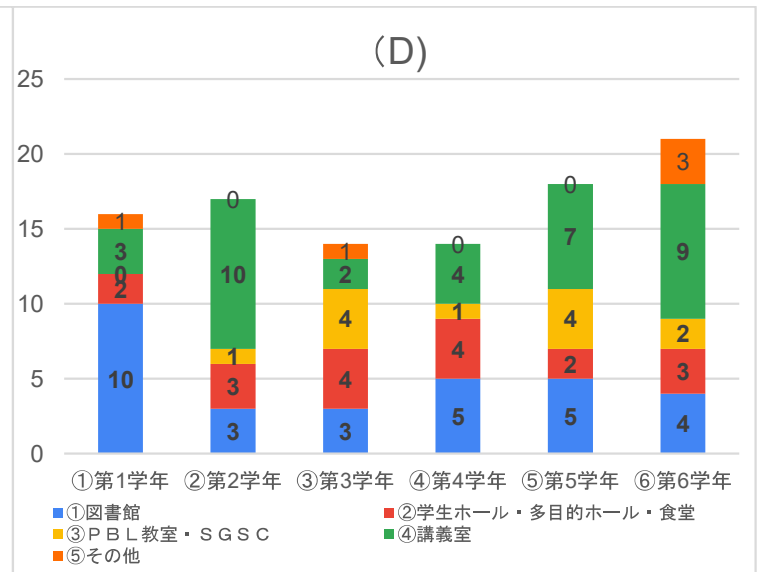
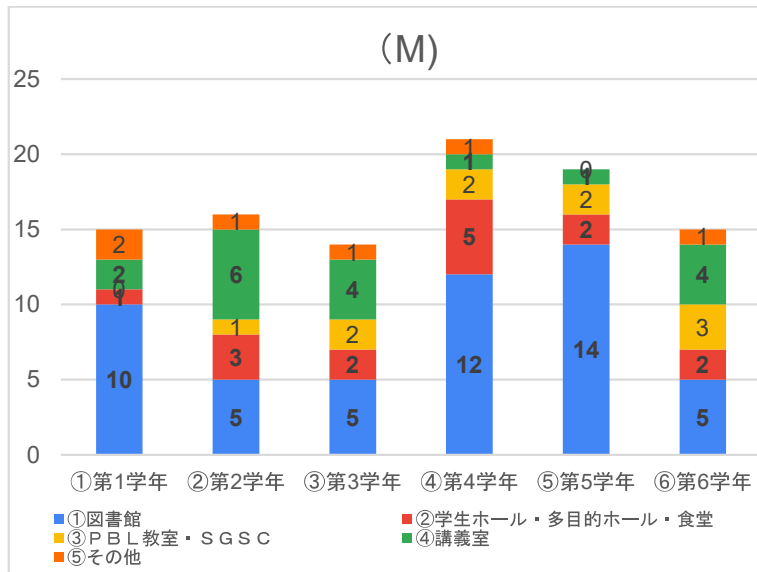
(OT)



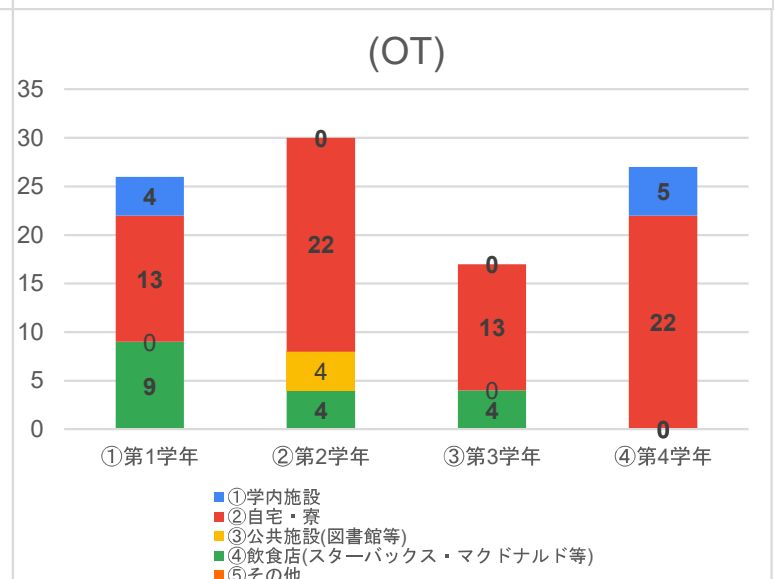
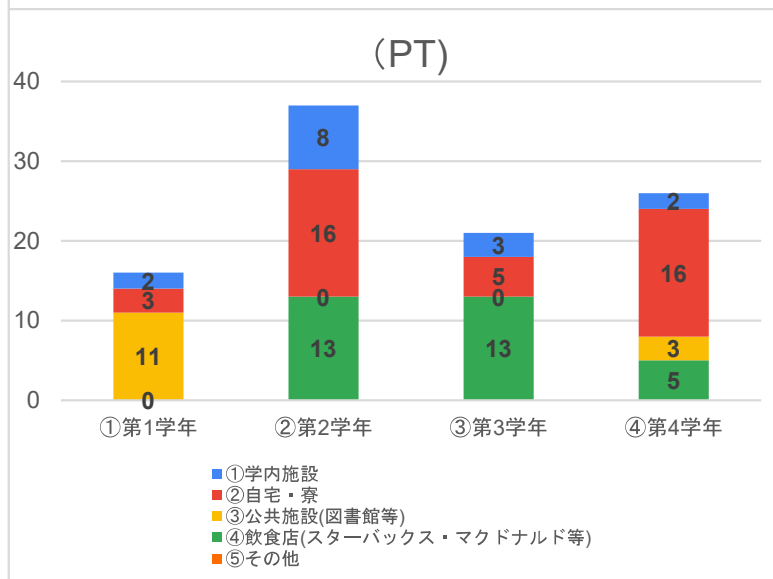
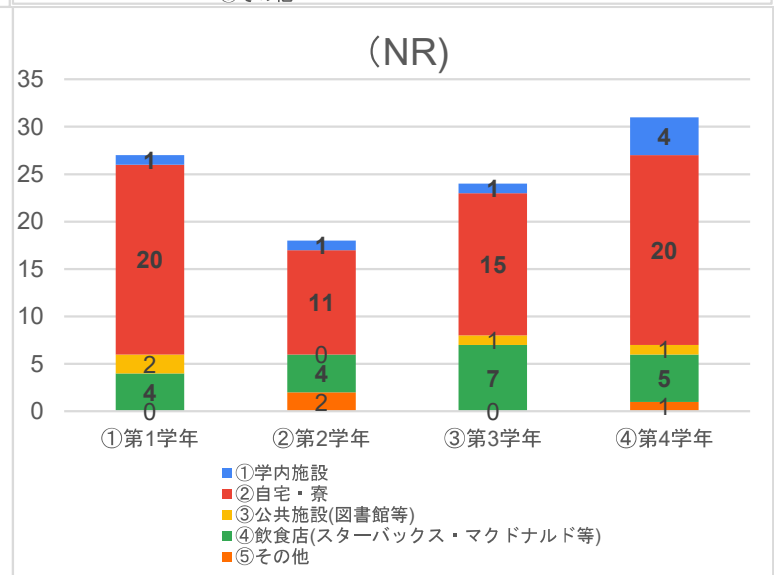
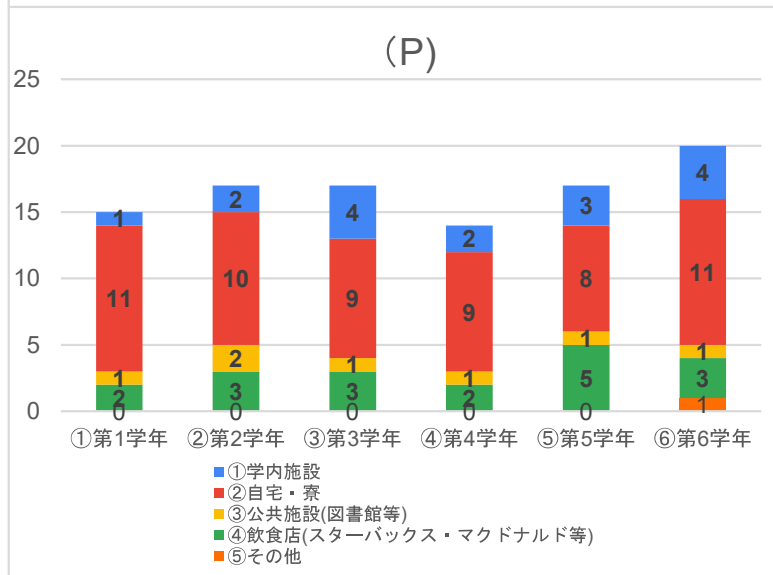
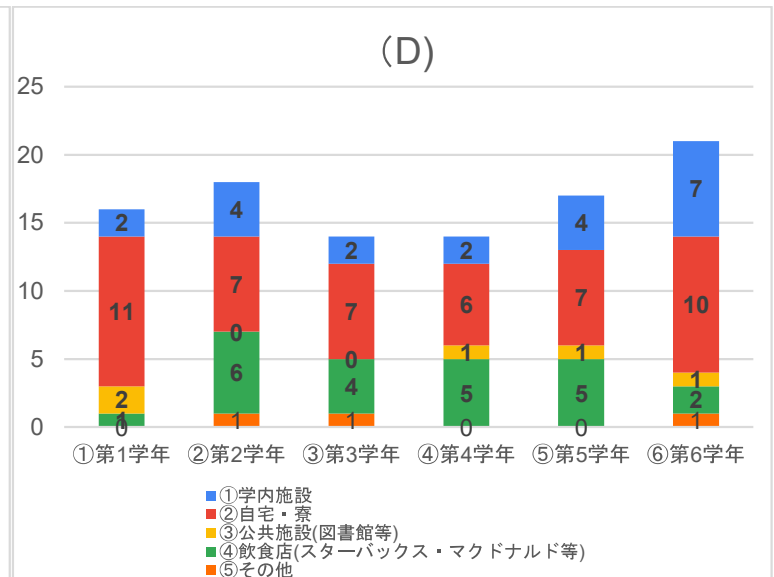
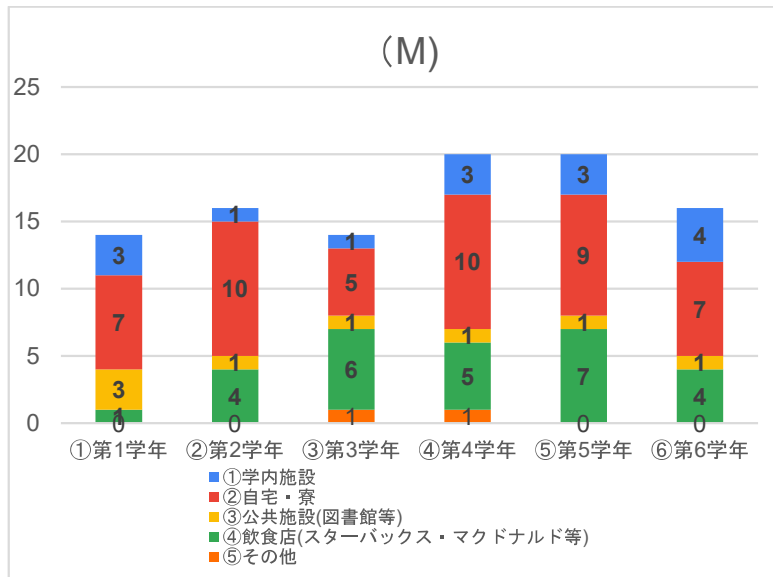
15.一番快適に学修できる場所はどこですか？



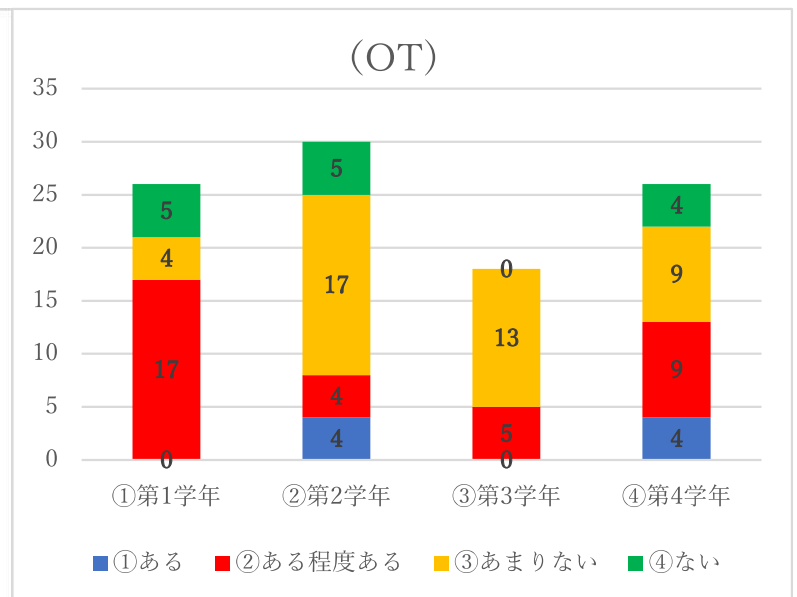
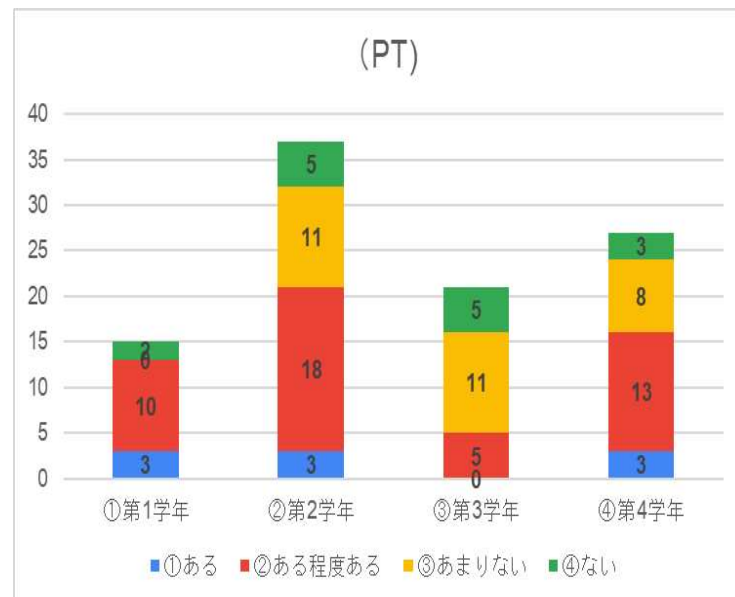
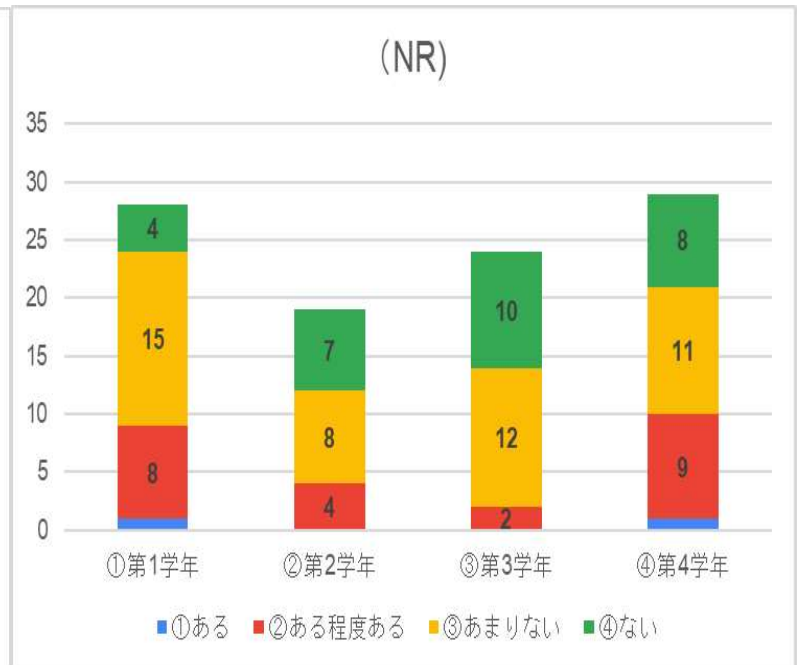
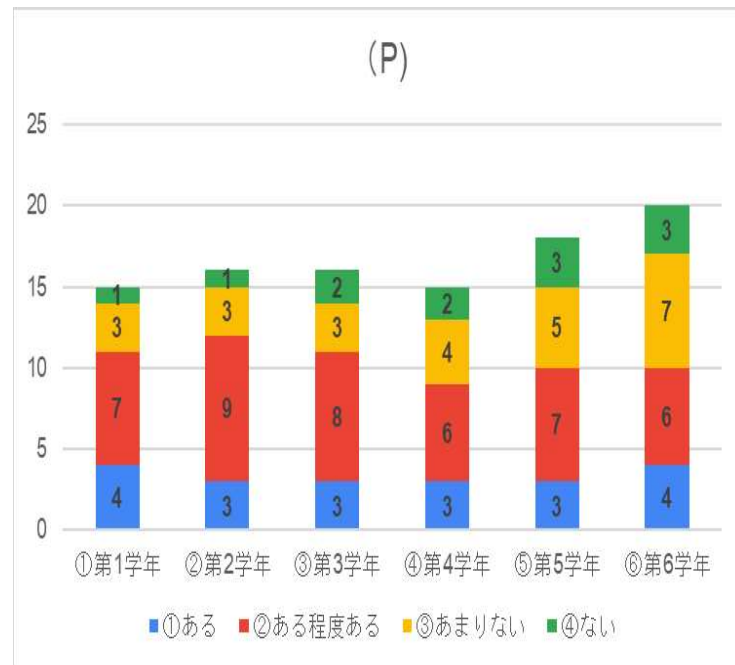
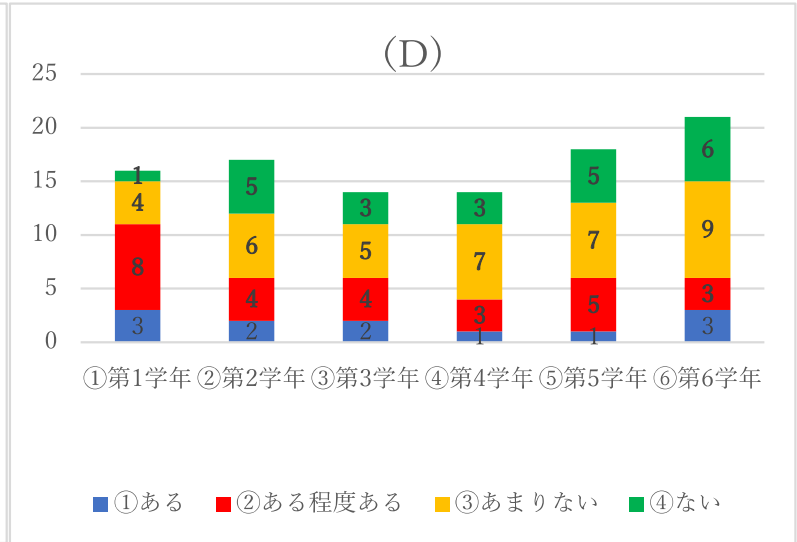
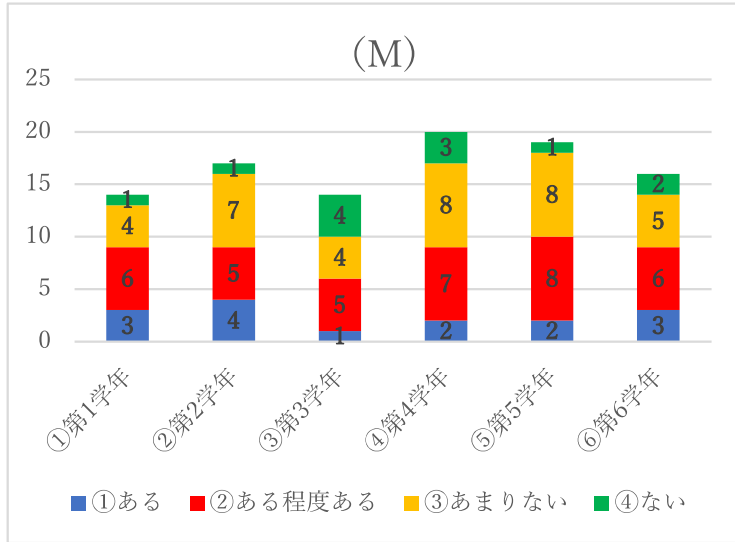
16. 学内施設で学修する場合、どの場所が一番快適に学修できますか？



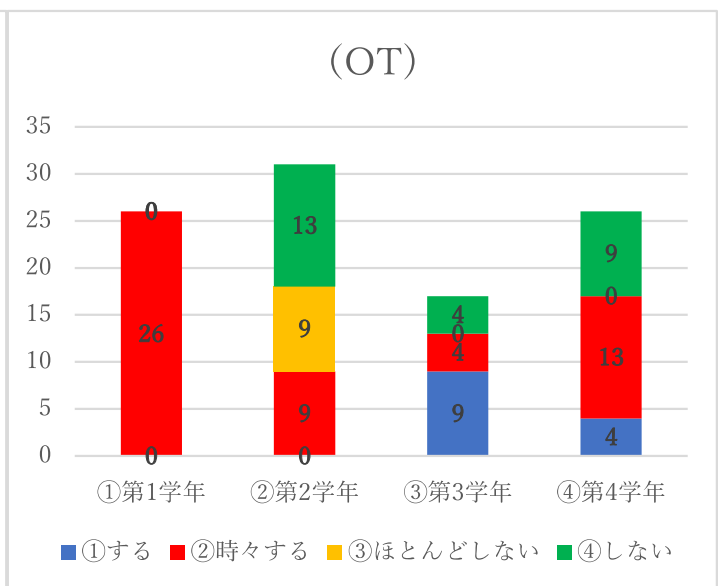
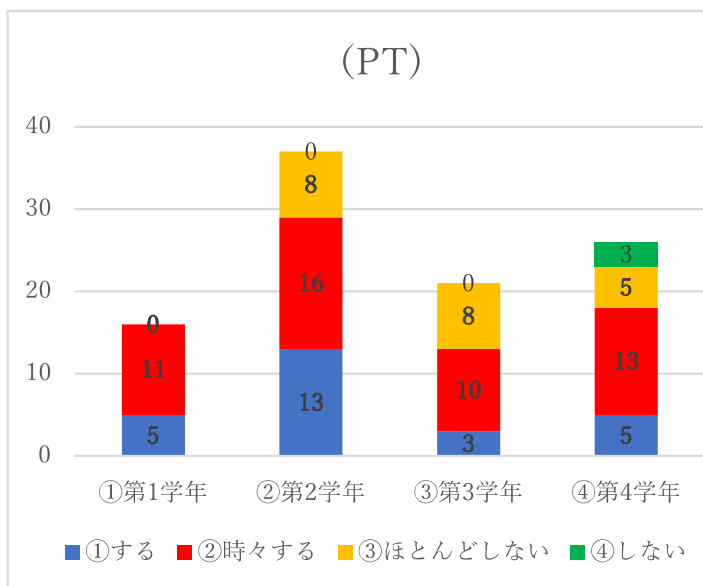
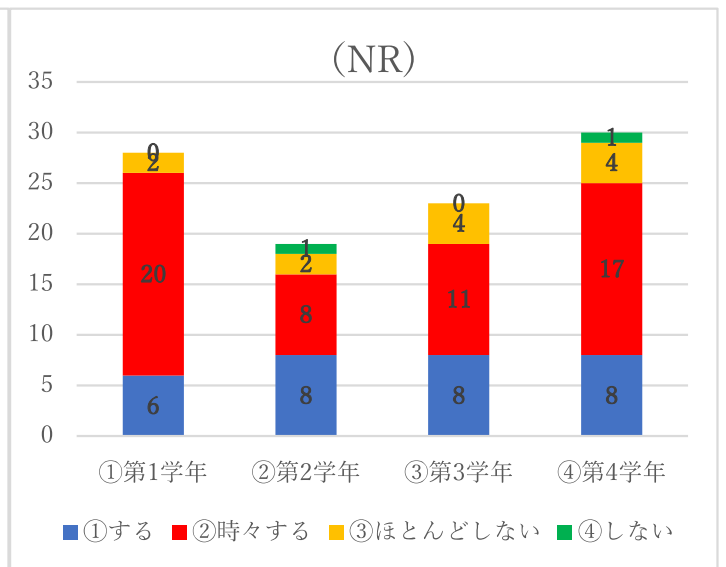
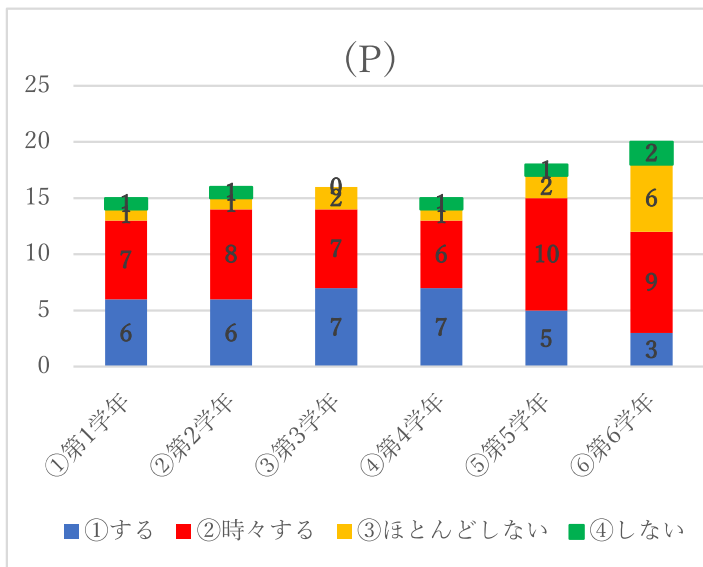
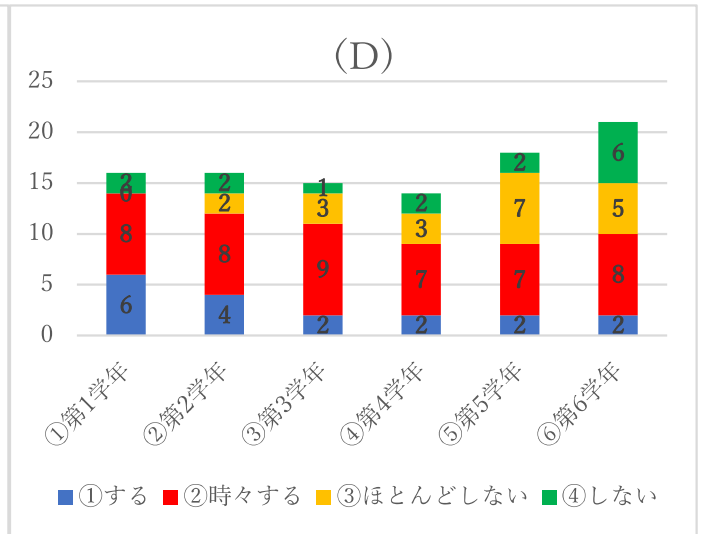
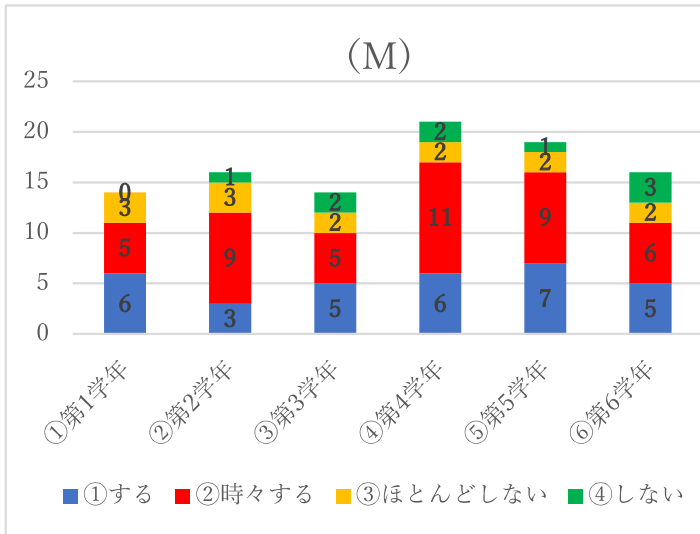
17.課外の学修場所は主にどこを利用しますか？



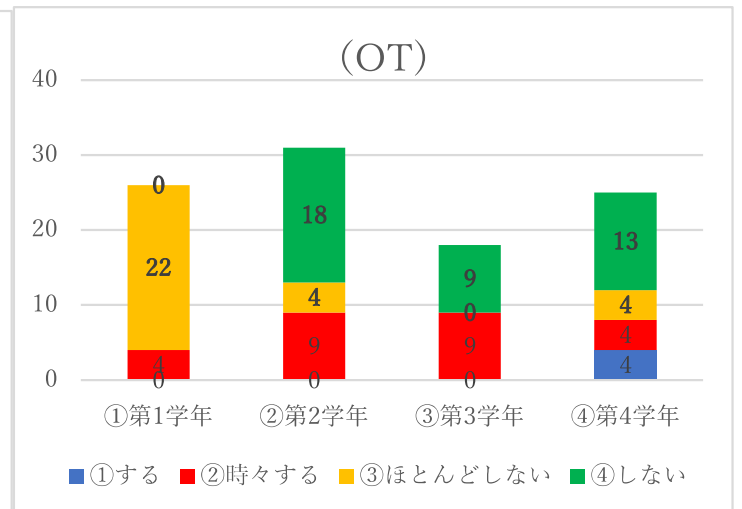
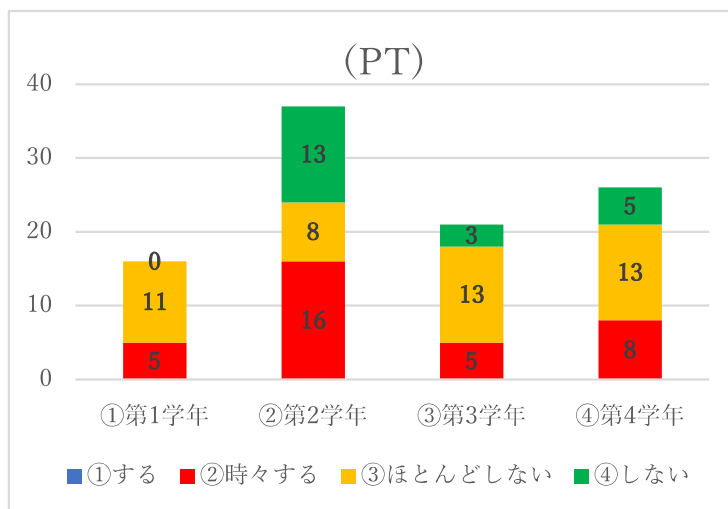
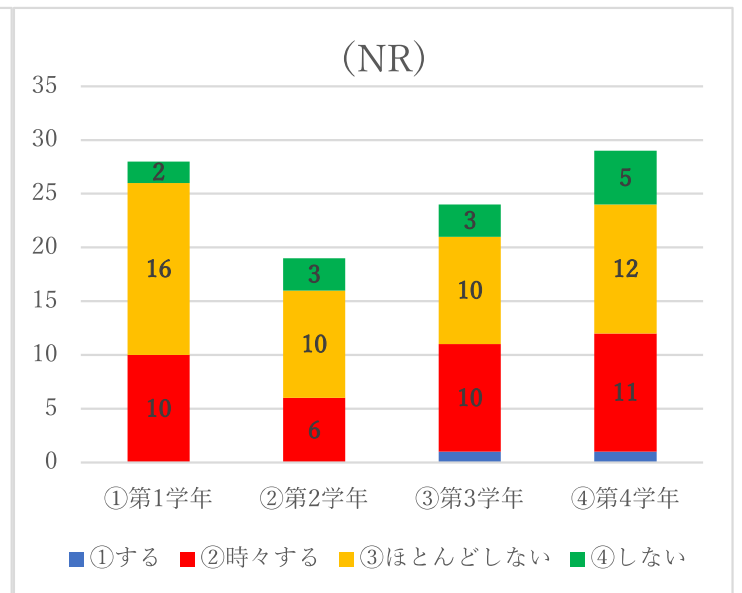
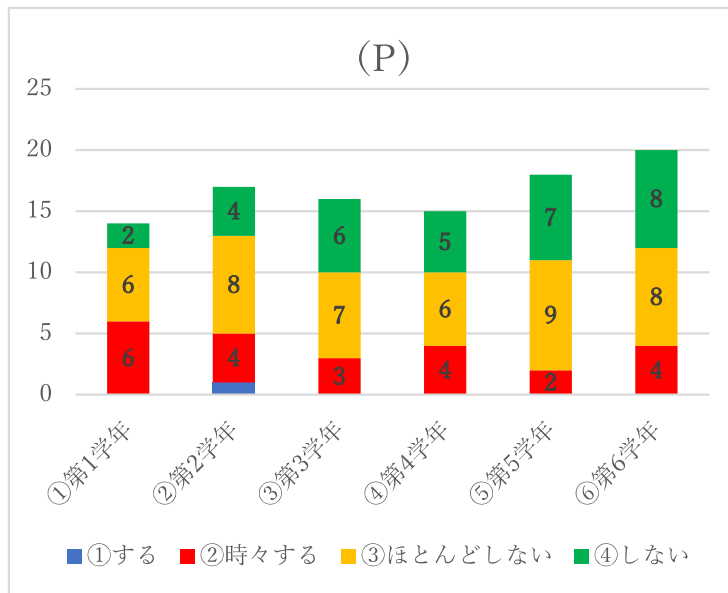
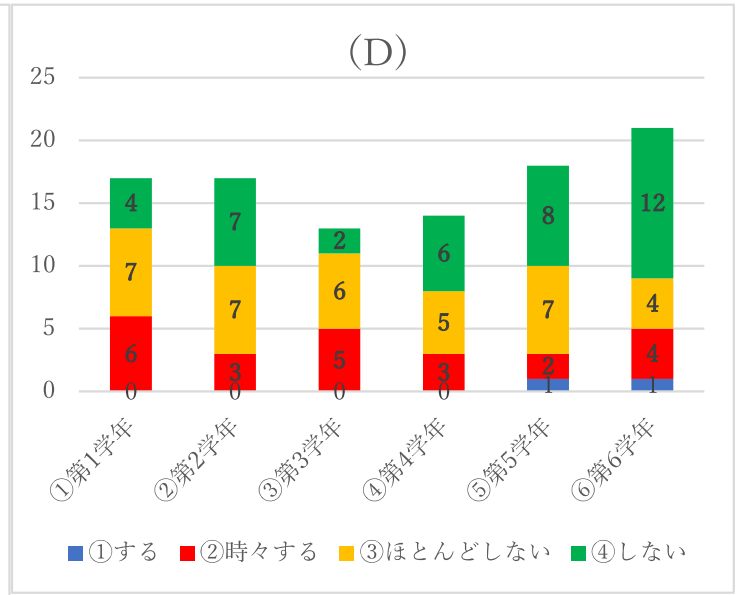
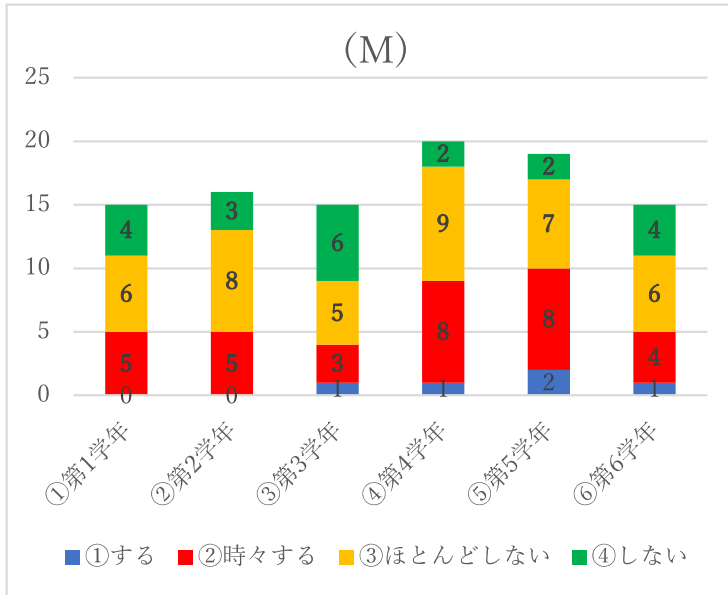
19. 「研究」に興味・関心がありますか？



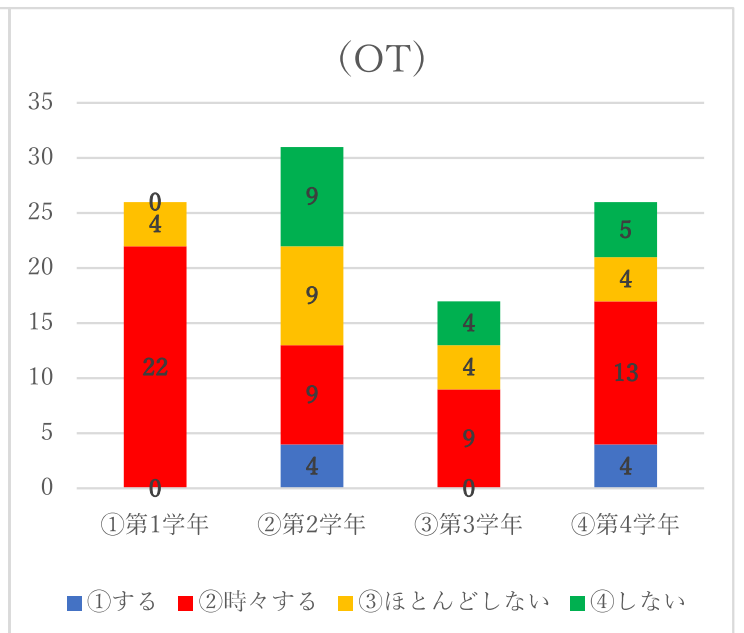
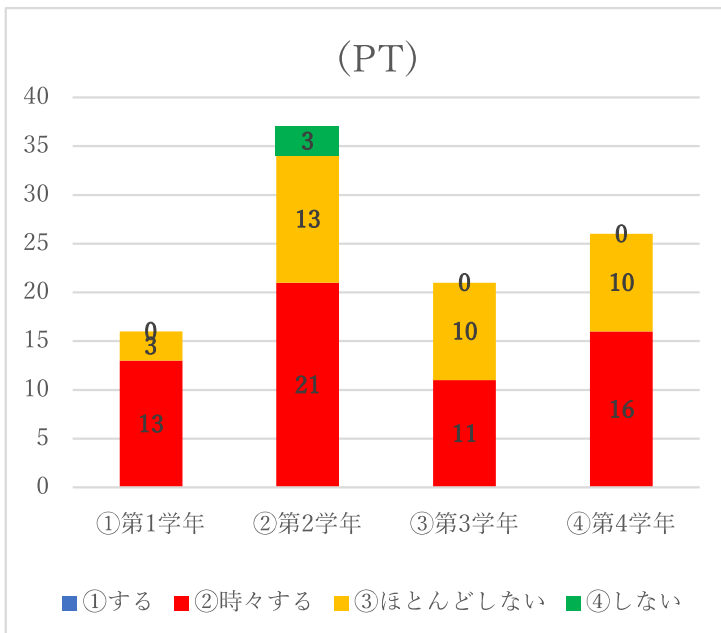
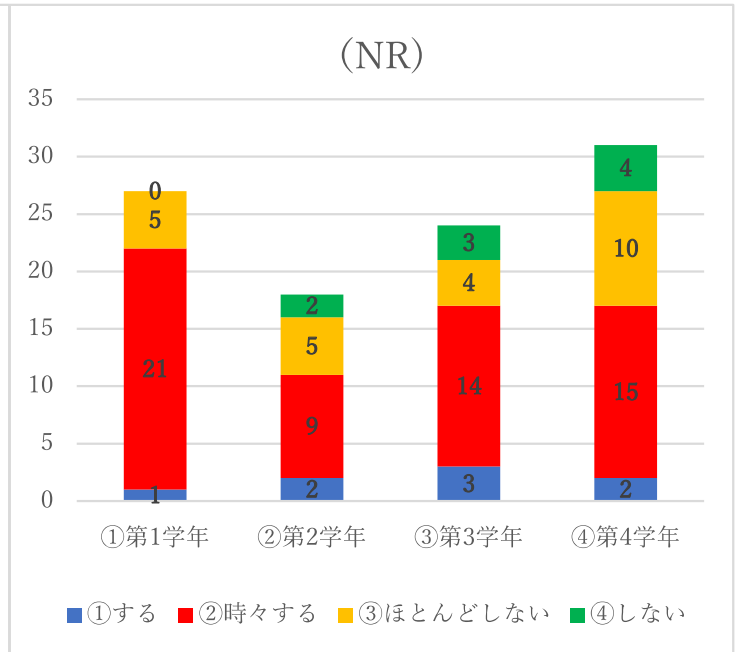
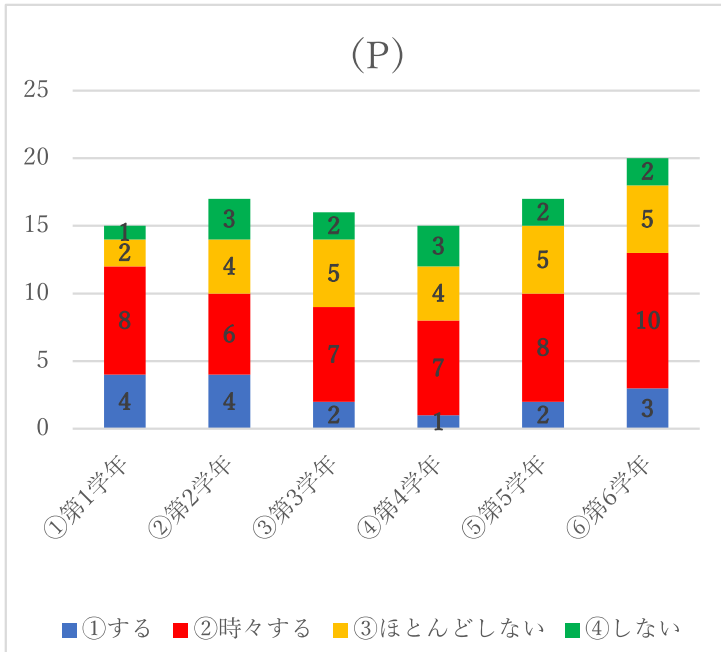
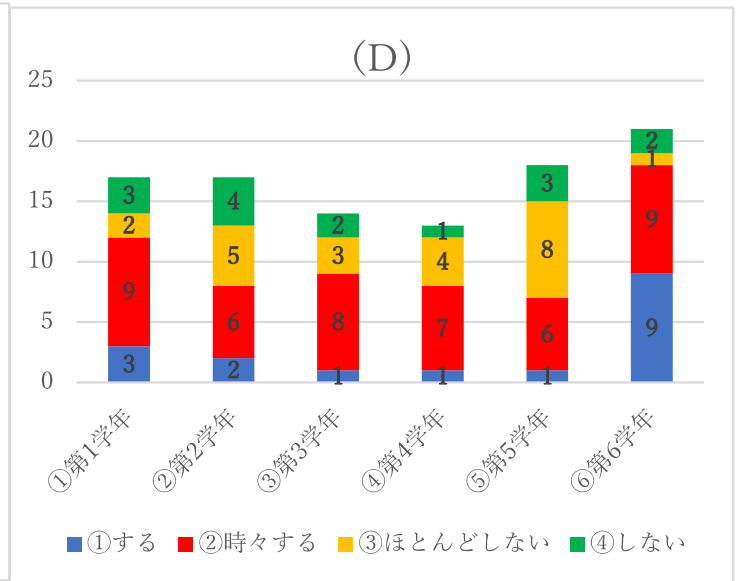
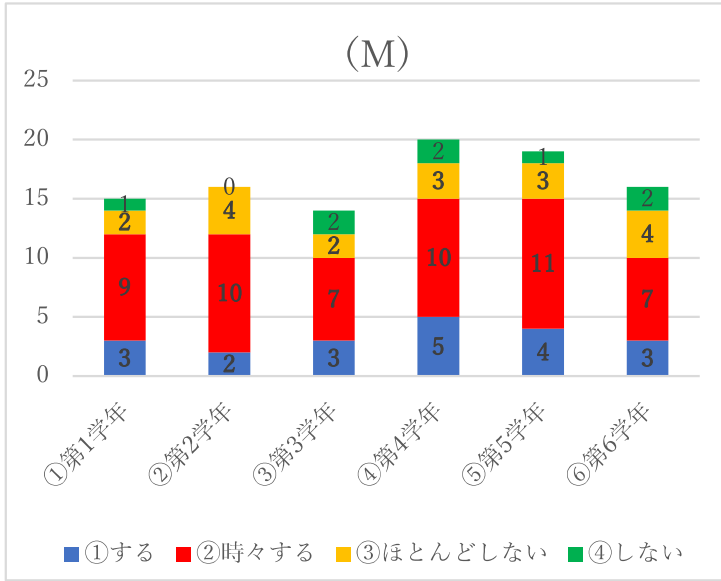
20.授業前にシラバスを確認しますか？



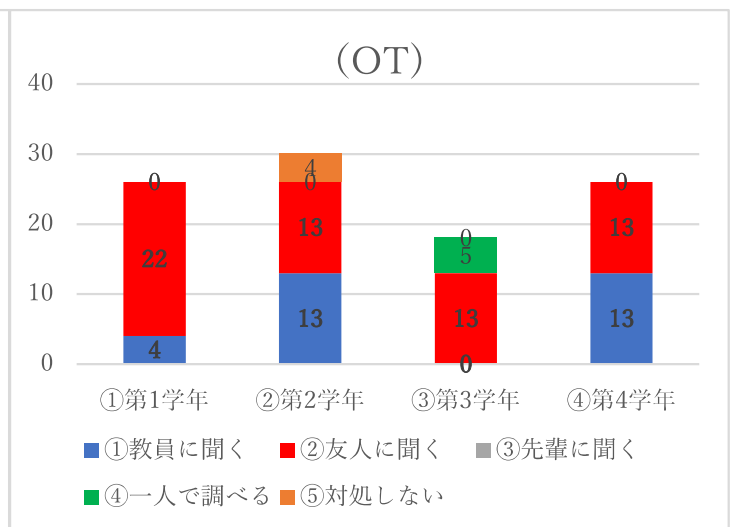
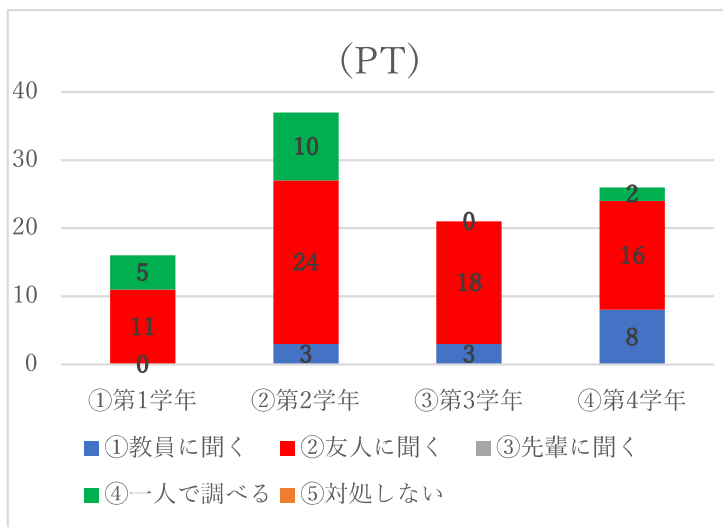
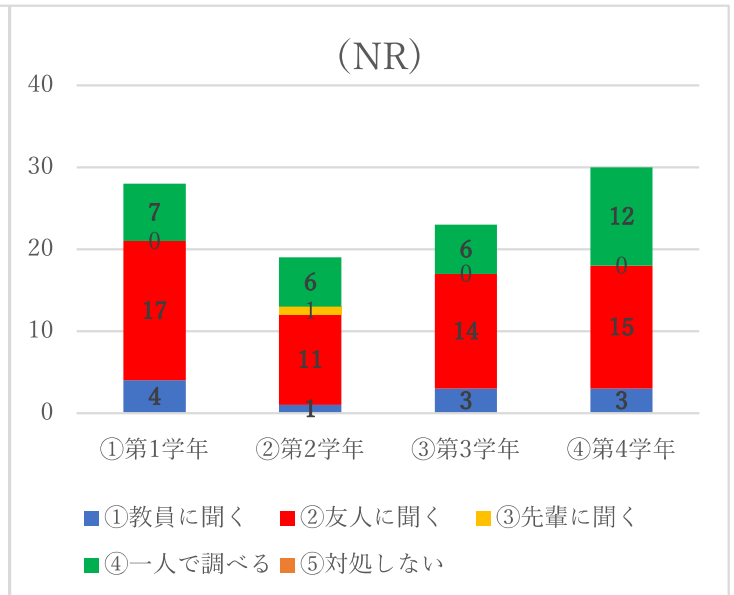
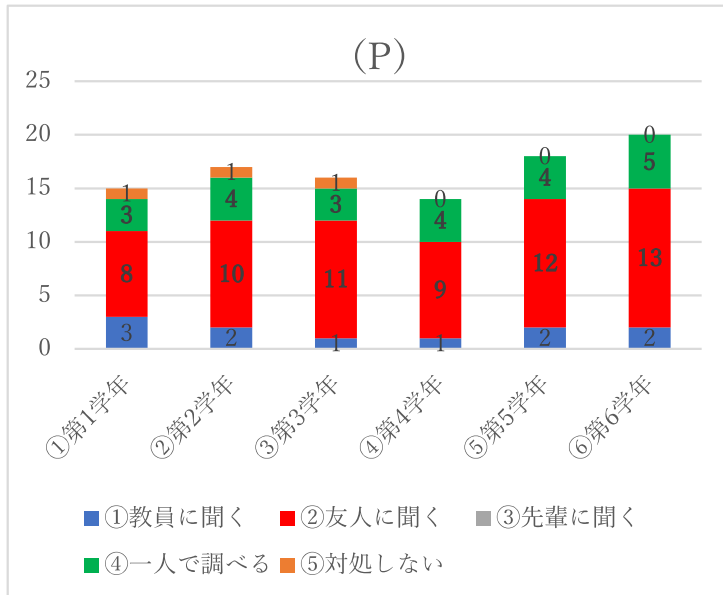
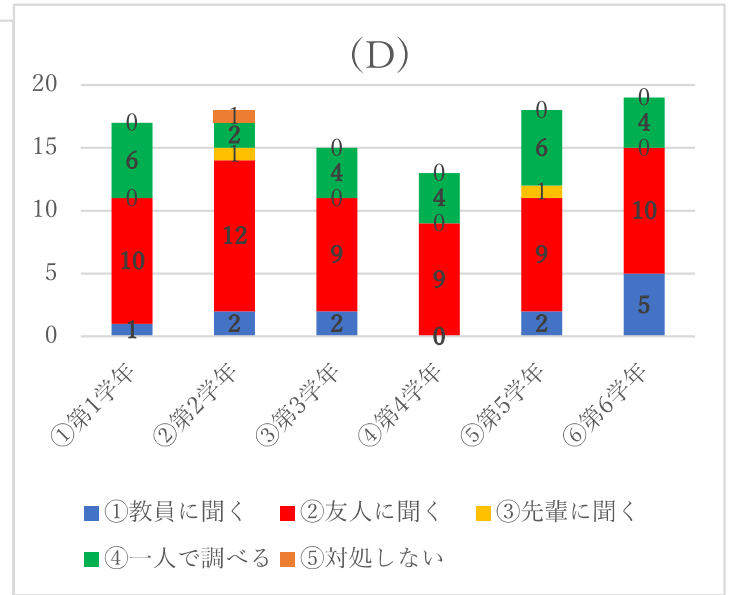
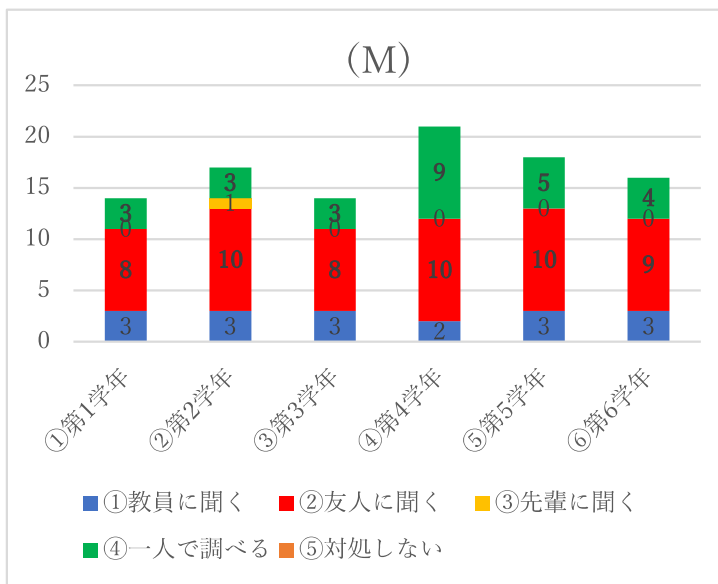
21.授業前にシラバスを確認し、予習をしますか？



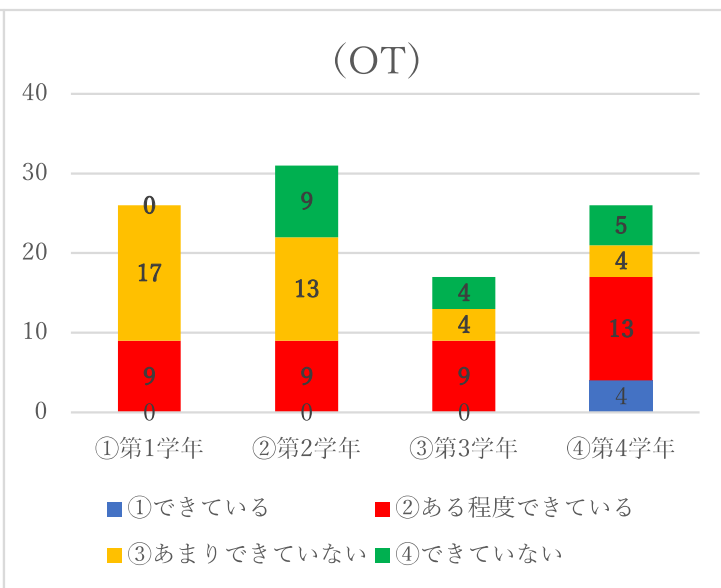
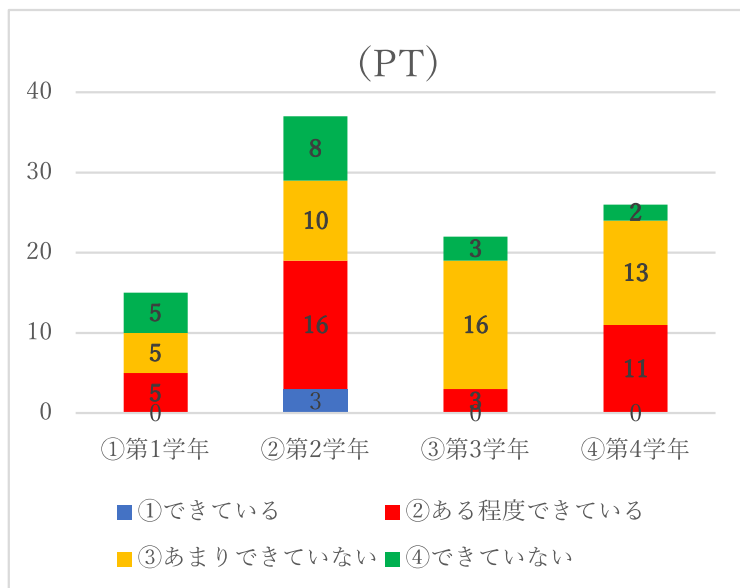
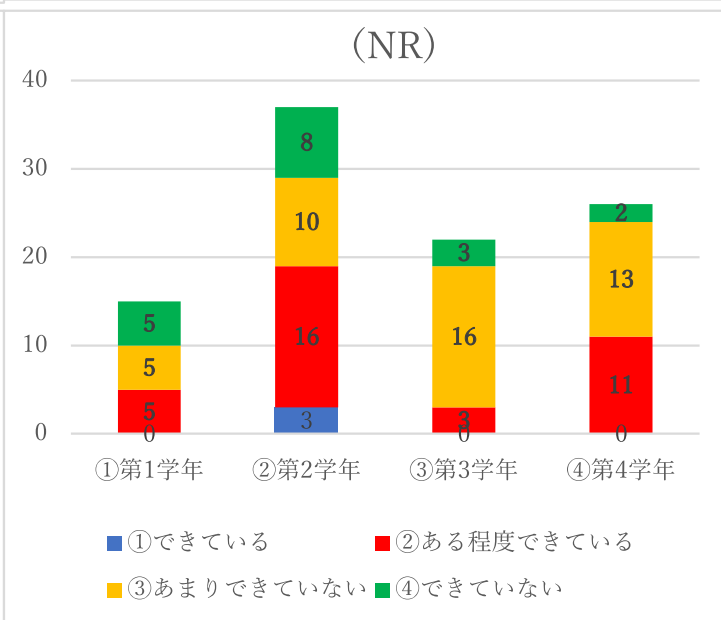
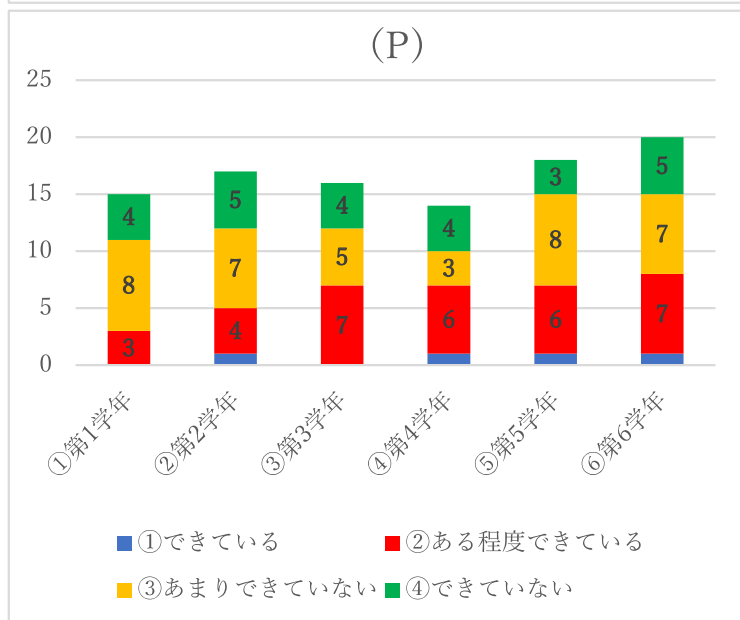
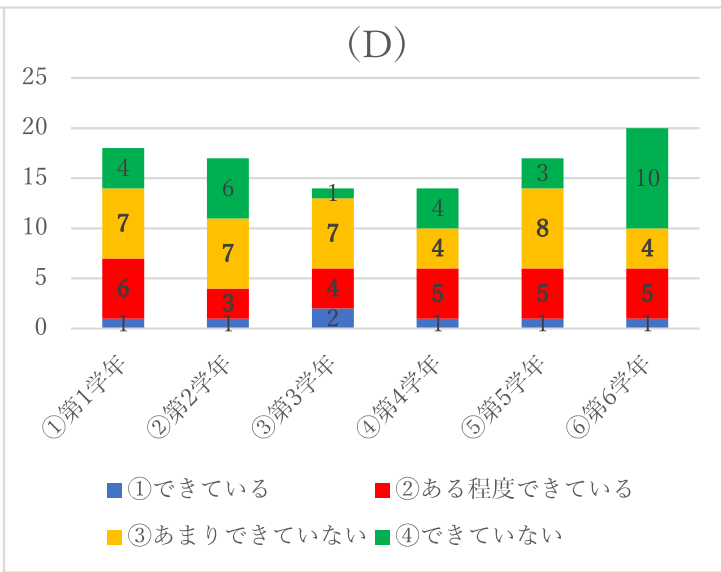
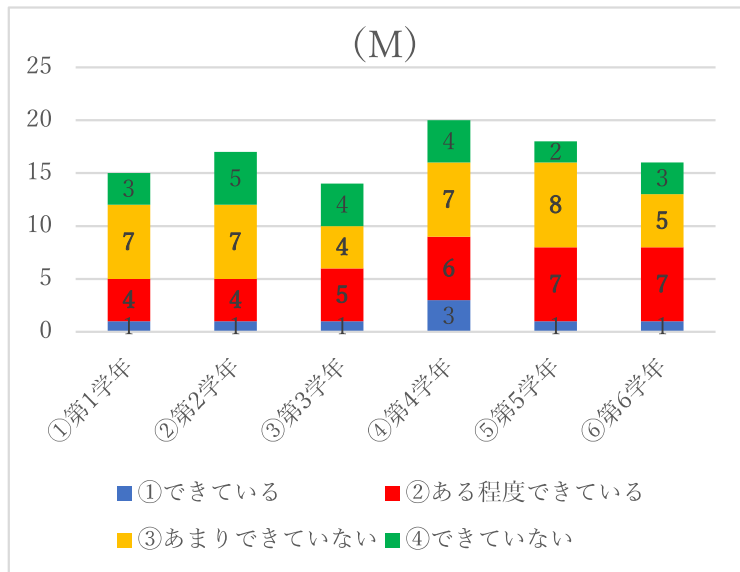
22.授業後に復習をしますか？



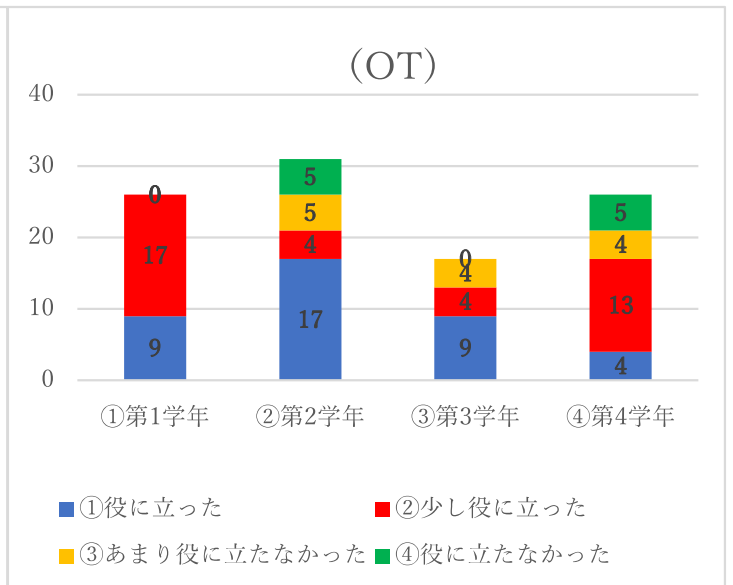
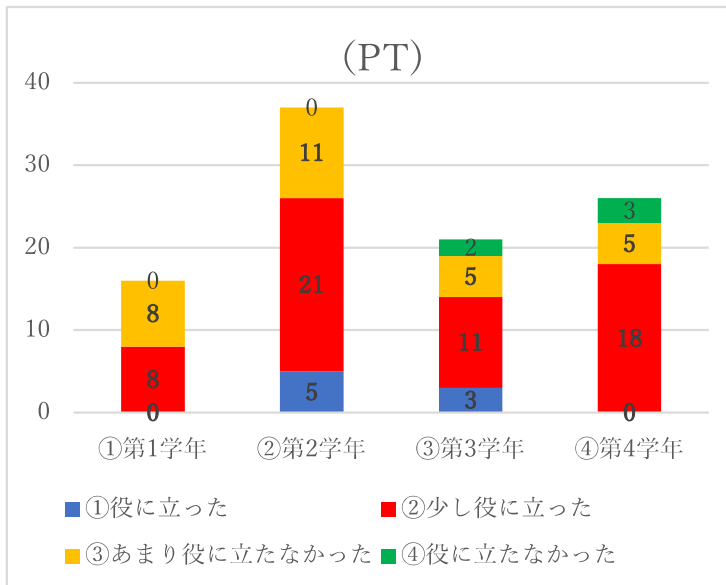
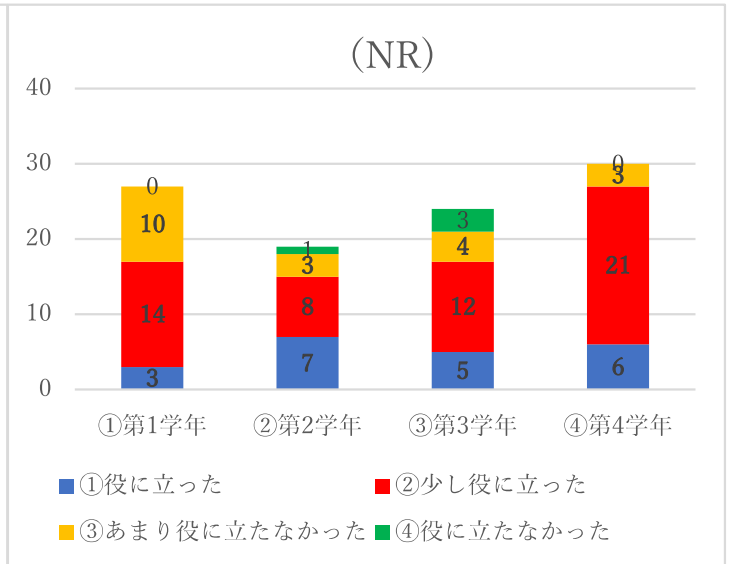
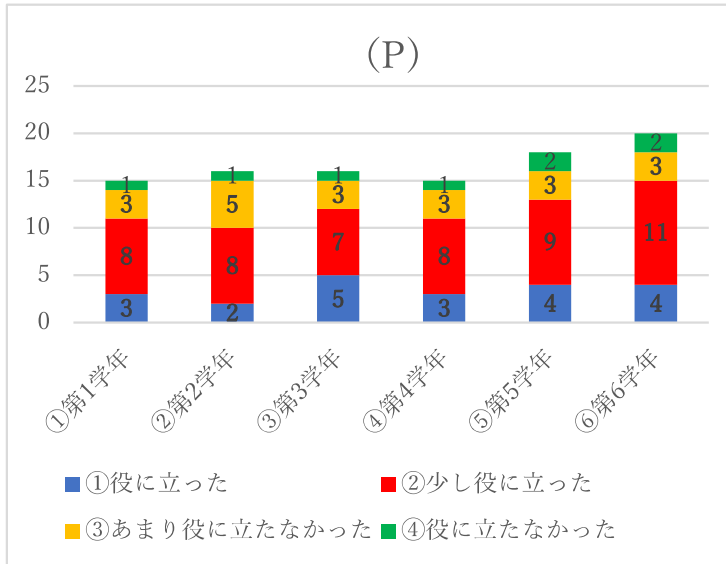
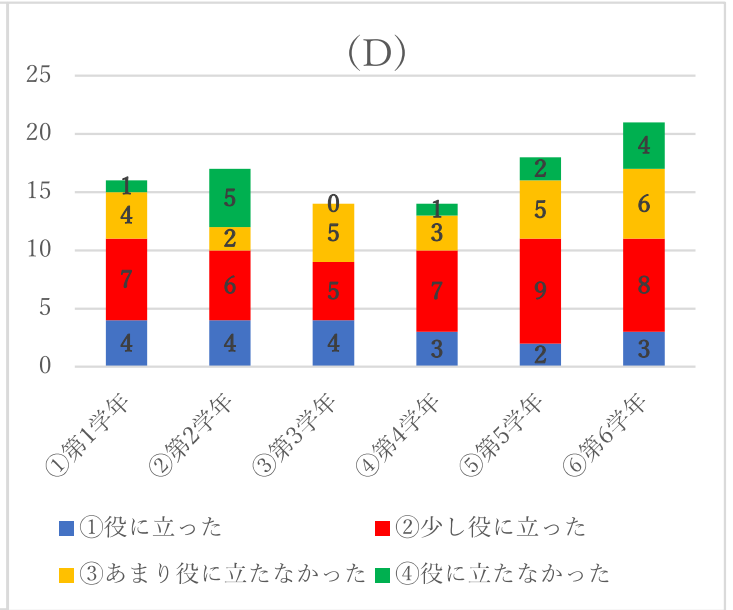
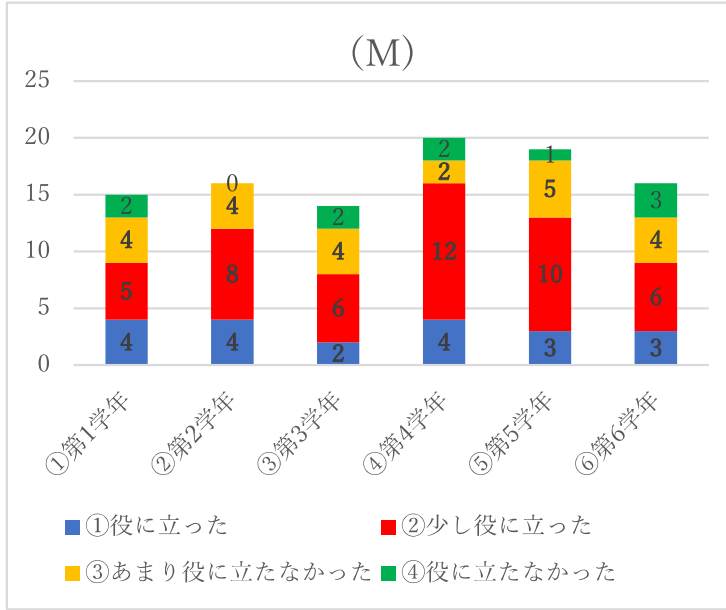
23.授業中に生じた疑問点は、どのように対処していますか？



24.(電子)ポートフォリオで自らの成長を確認できていますか？

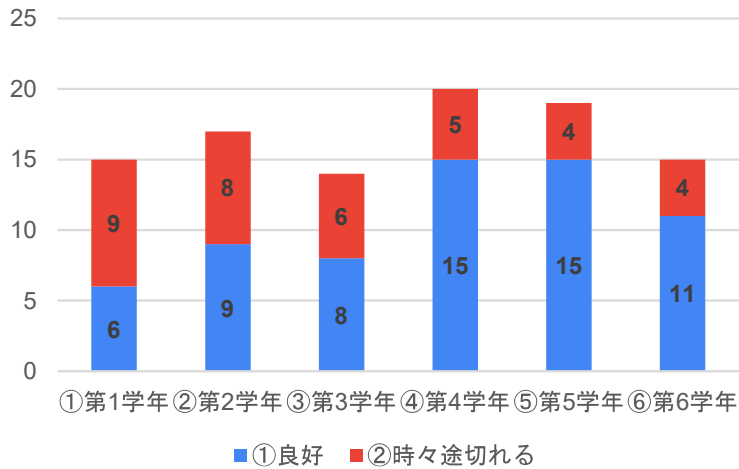


25.(電子)ポートフォリオでの指導者からのフィードバックは役に立ちましたか？

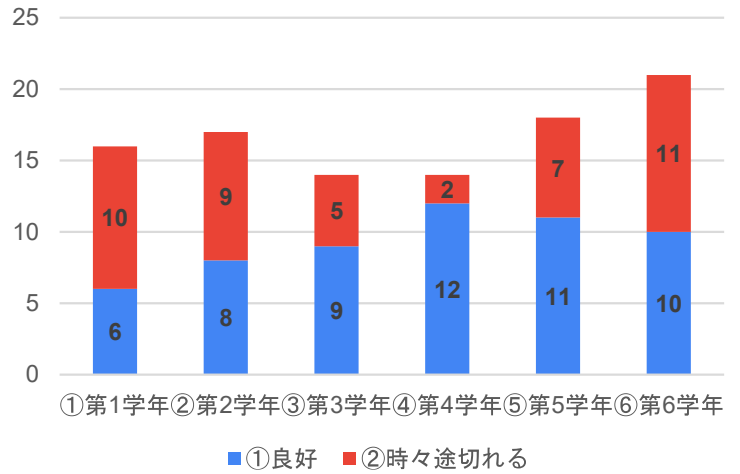


26.通信に関する問題がありましたか？

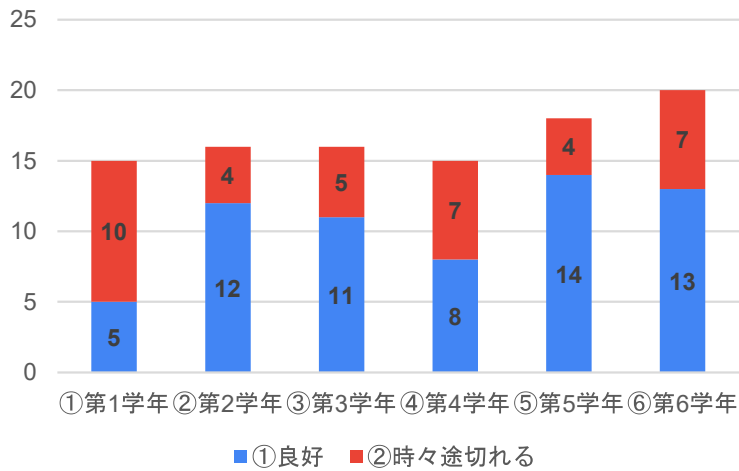
(M)



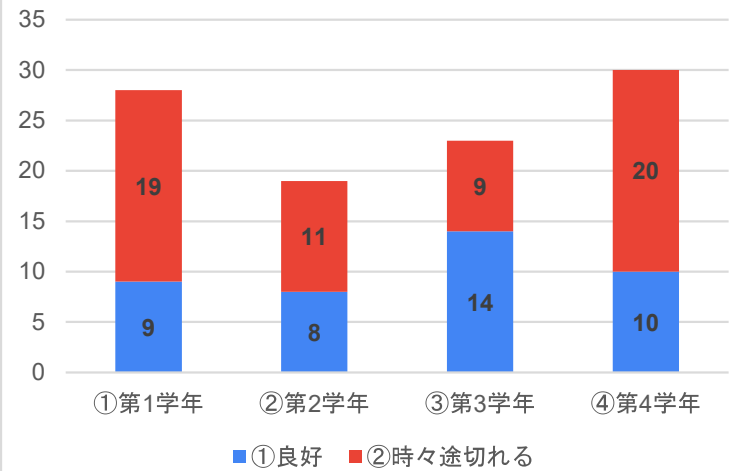
(D)



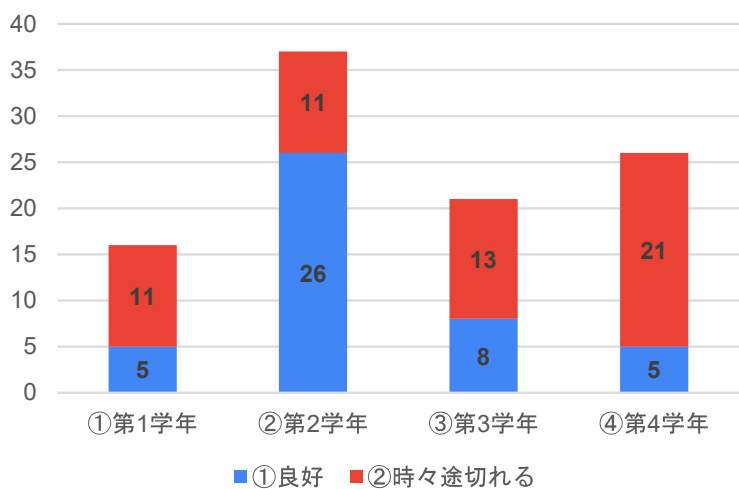
(P)



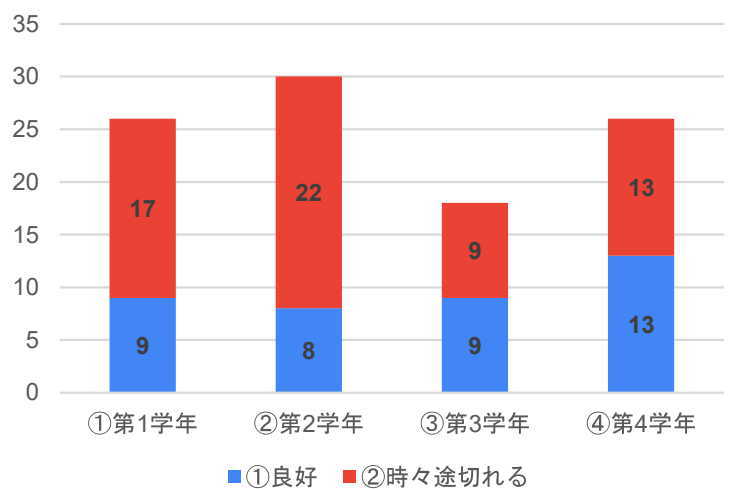
(NR)



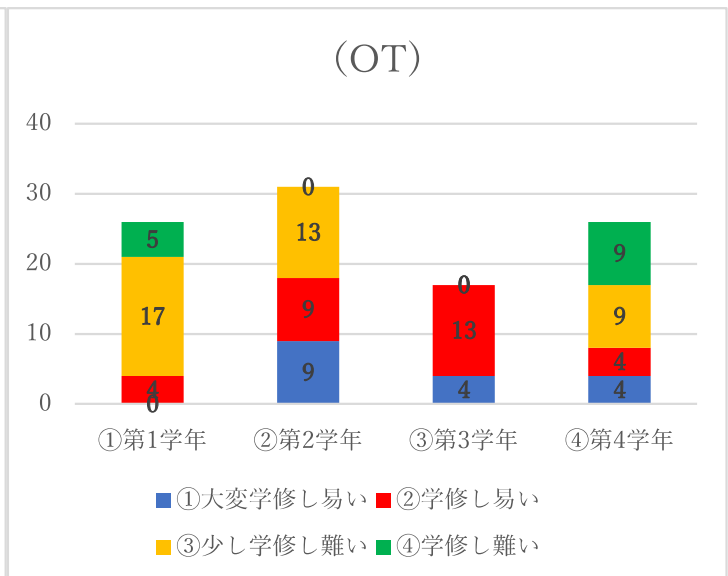
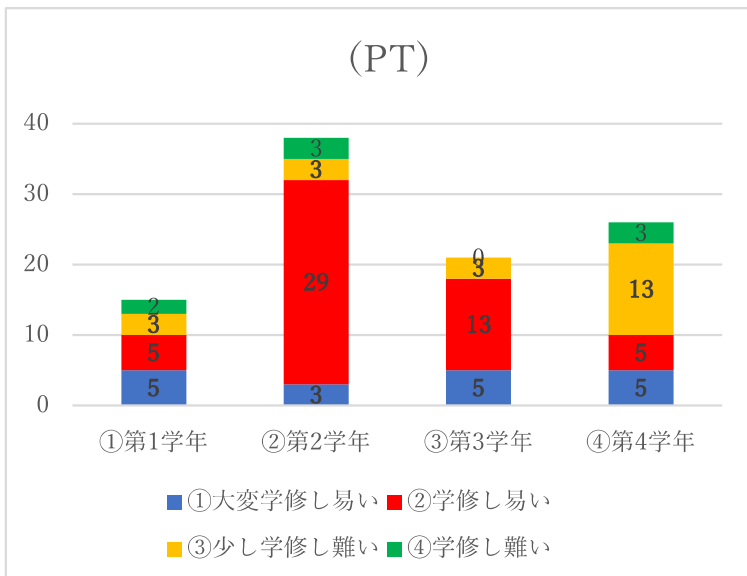
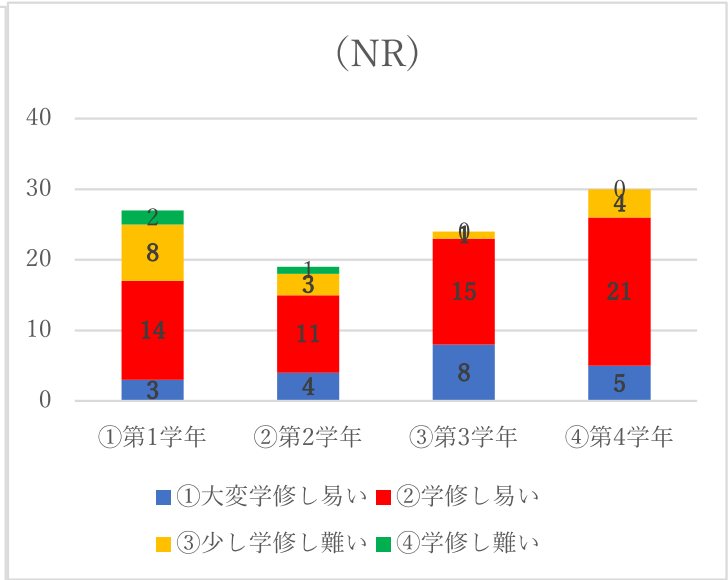
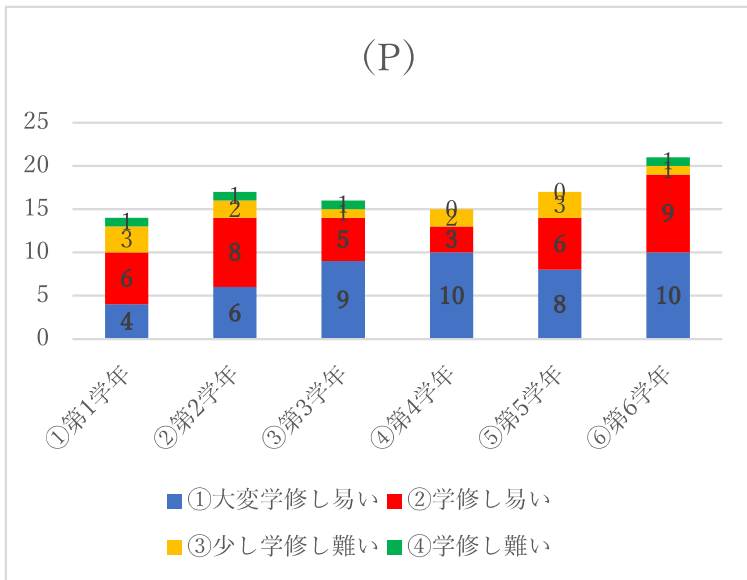
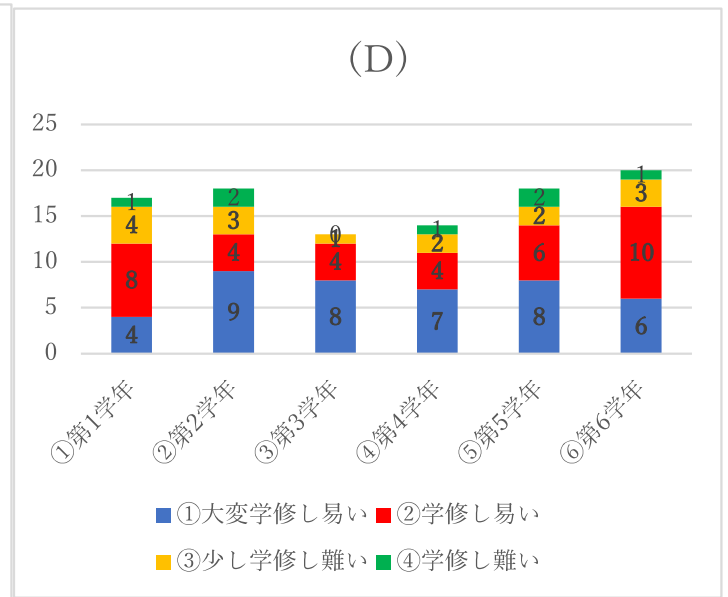
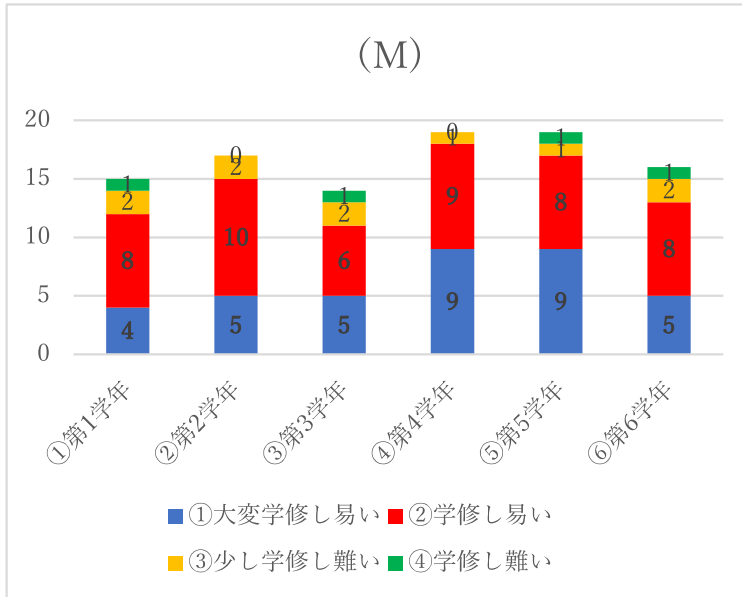
(PT)



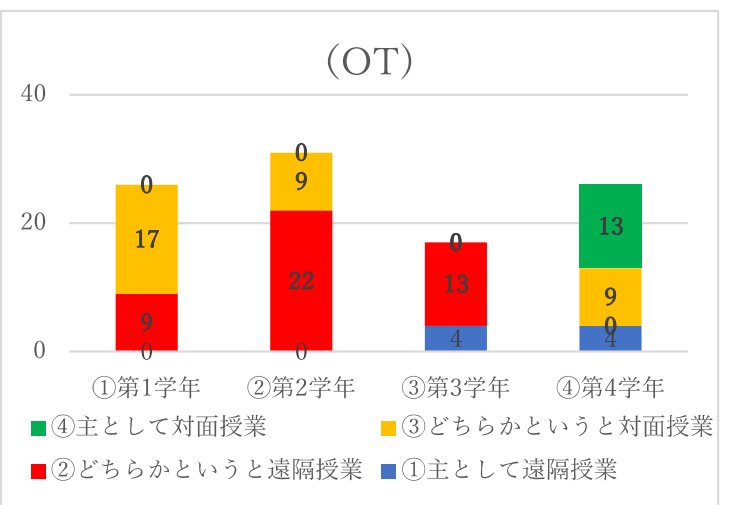
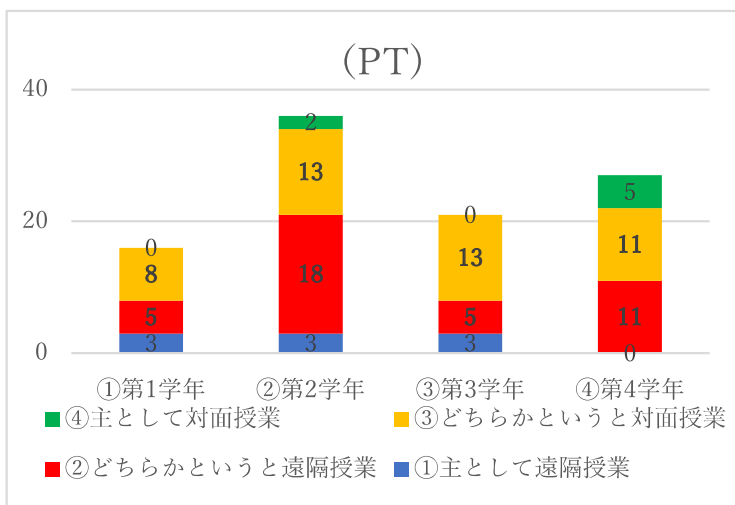
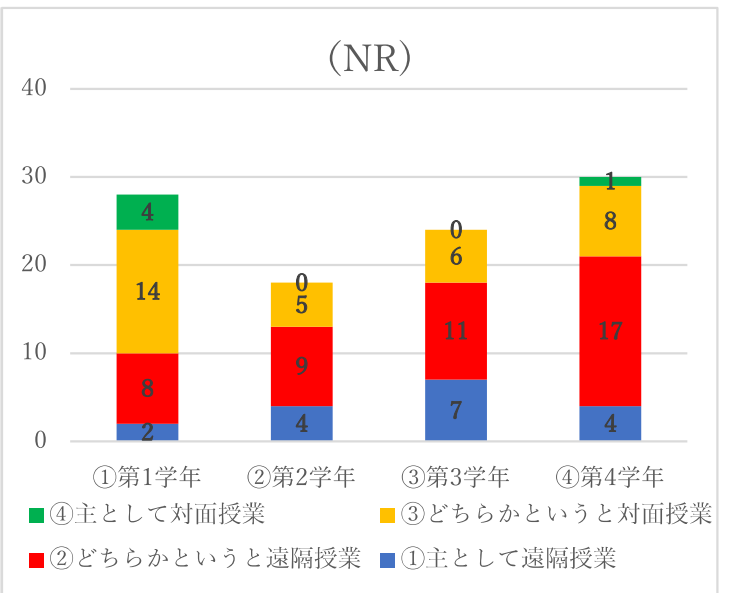
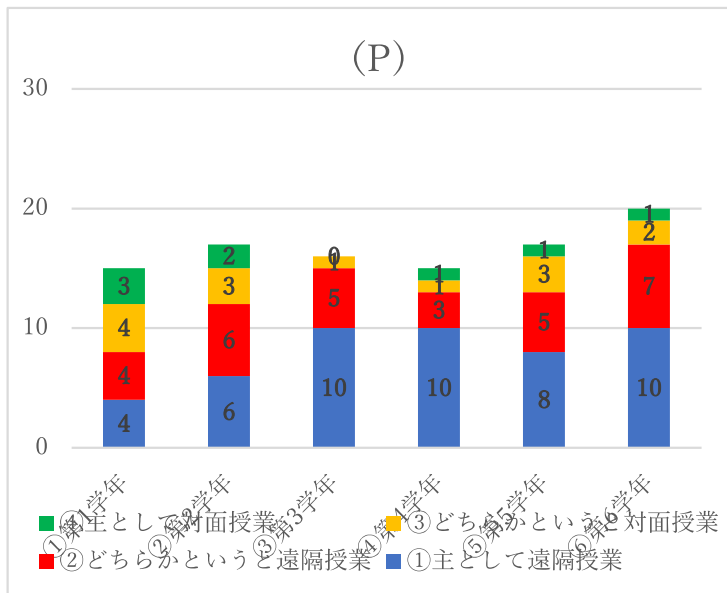
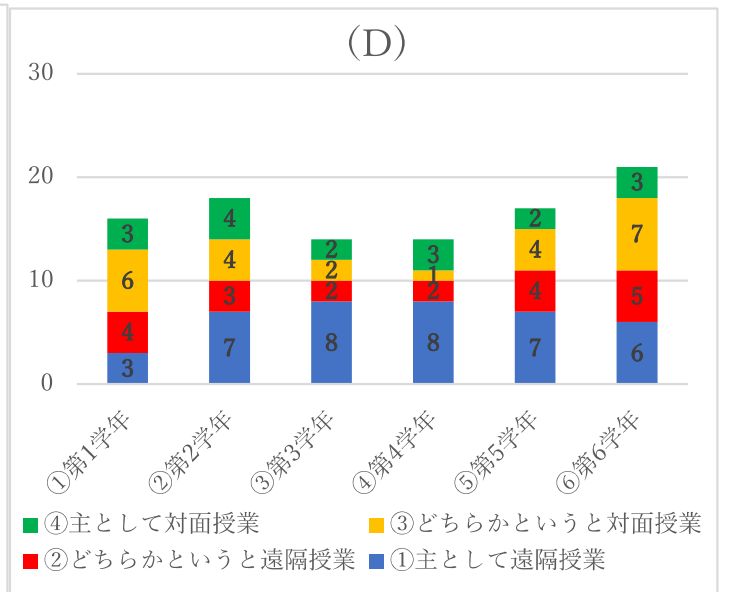
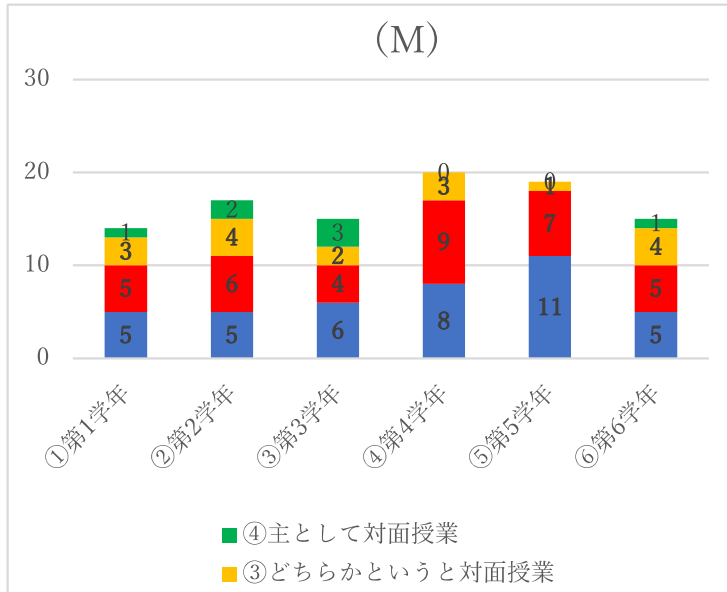
(OT)



27.遠隔授業は学修し易かったですか？



28.遠隔授業と通常の対面授業のどちらが学修し易かったですか？



29.遠隔授業の視聴時間は1日当たりどのくらい時間を要しましたか(費やしましたか)?

