

2023年度学修アンケート回答状況

3月1日時点

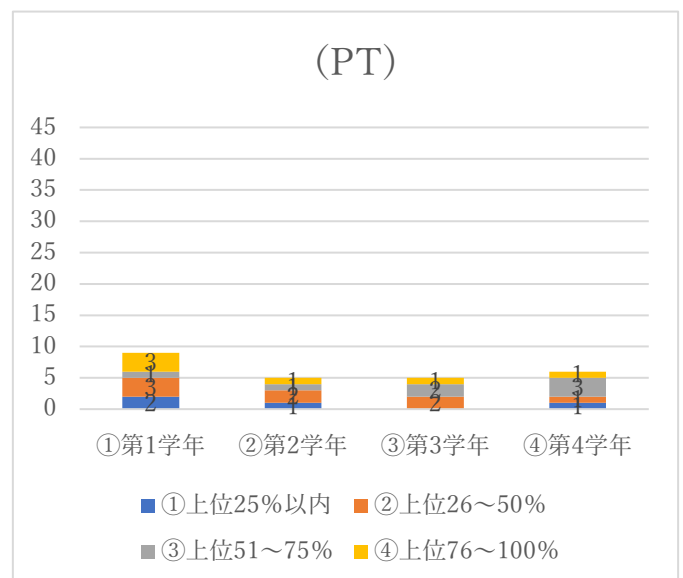
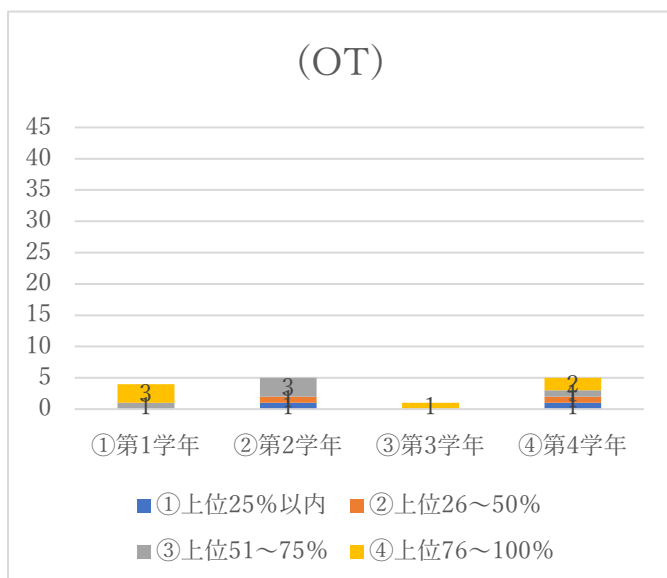
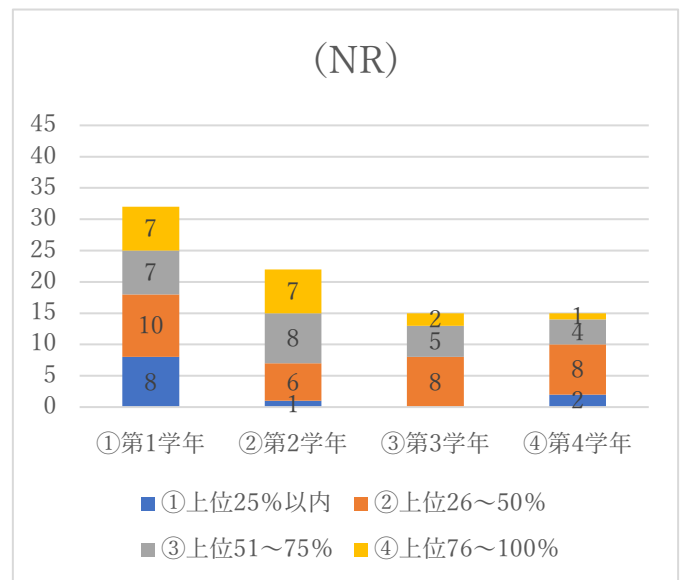
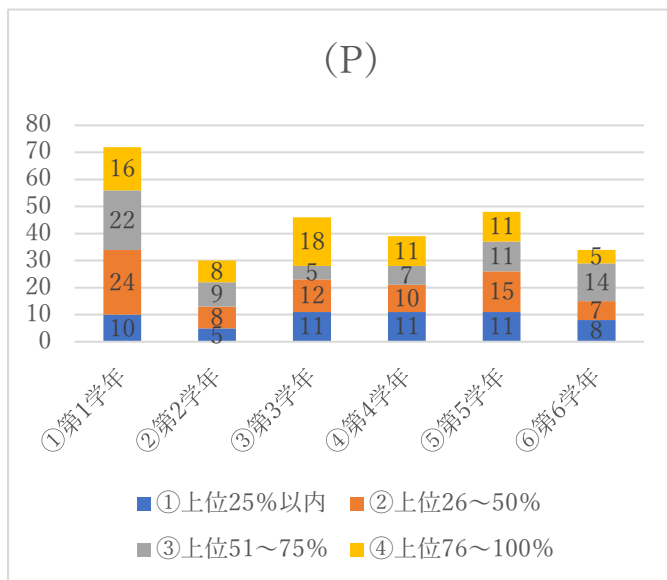
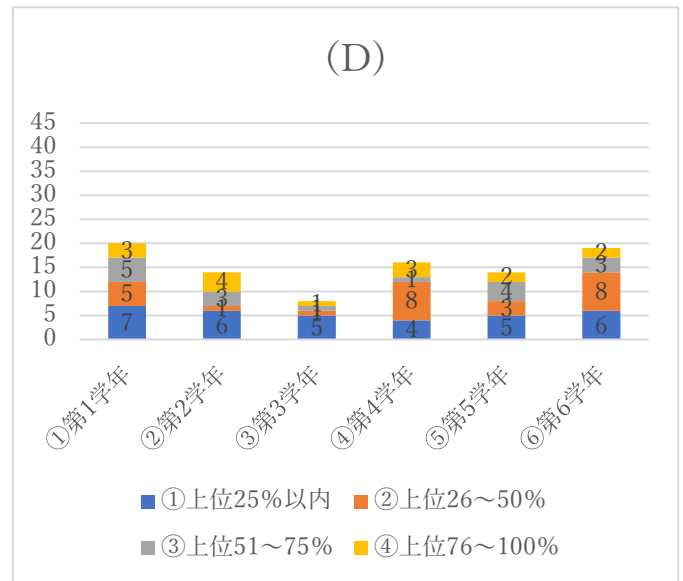
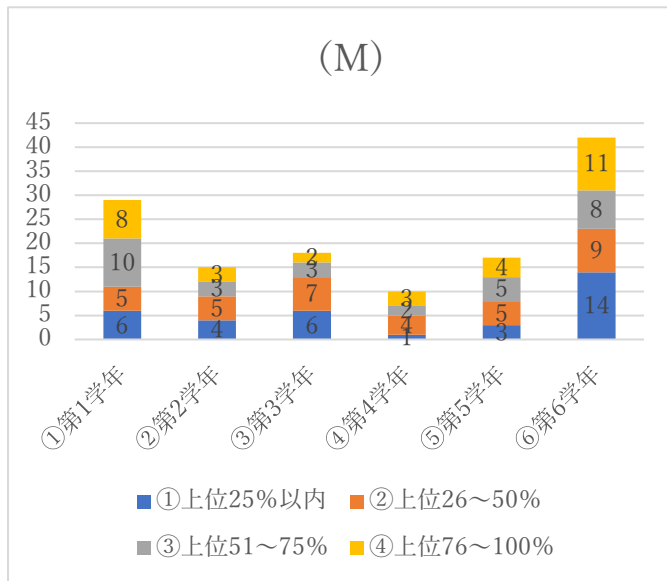
回答期間：12月18日～2月29日

対象：全学部生

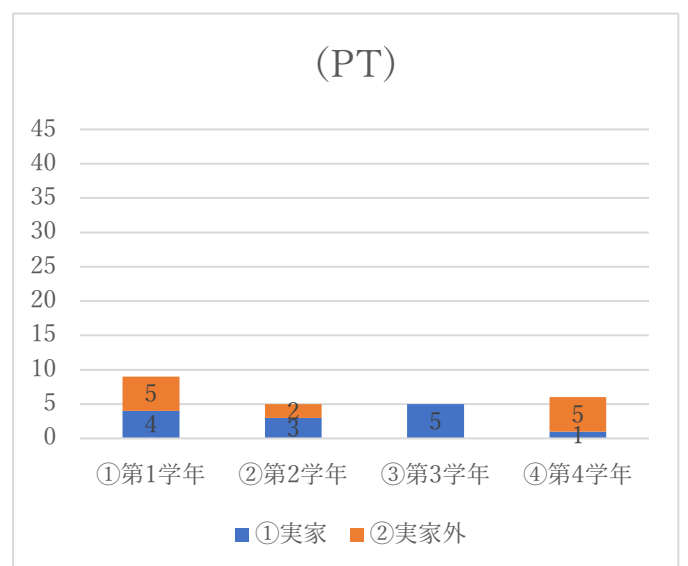
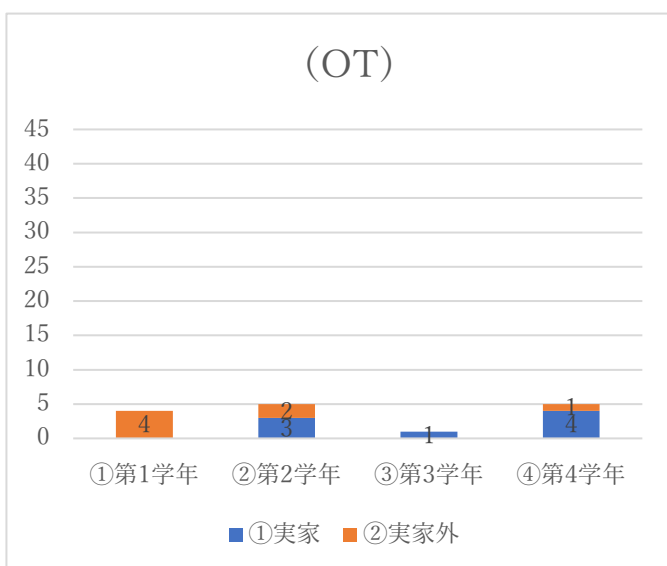
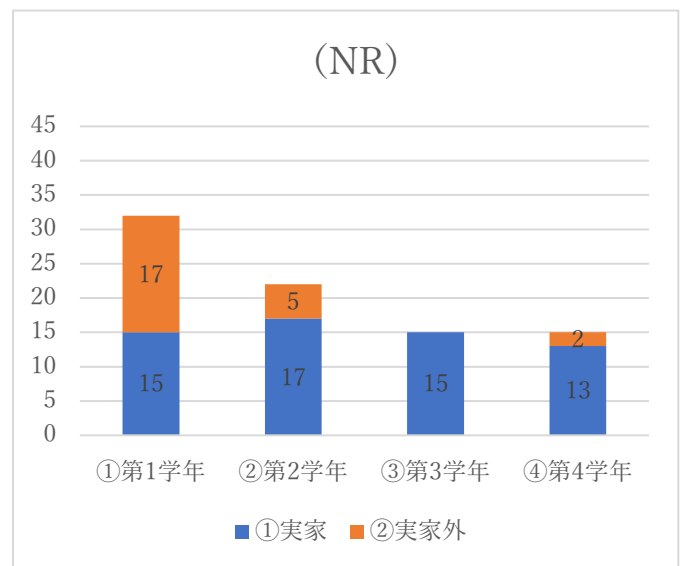
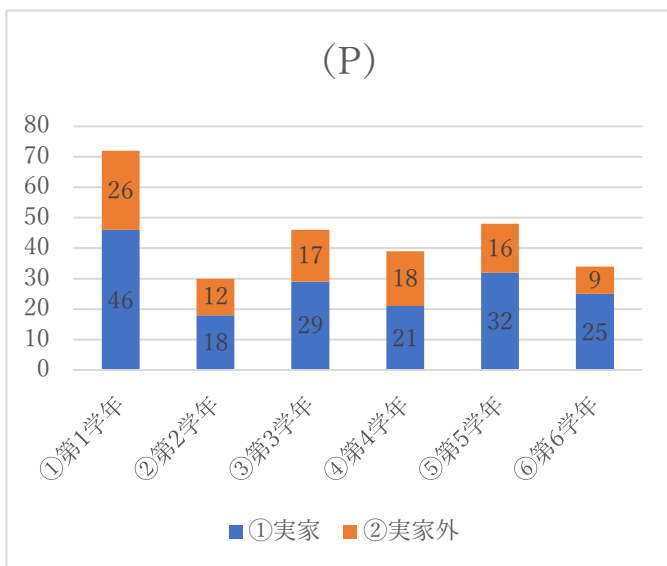
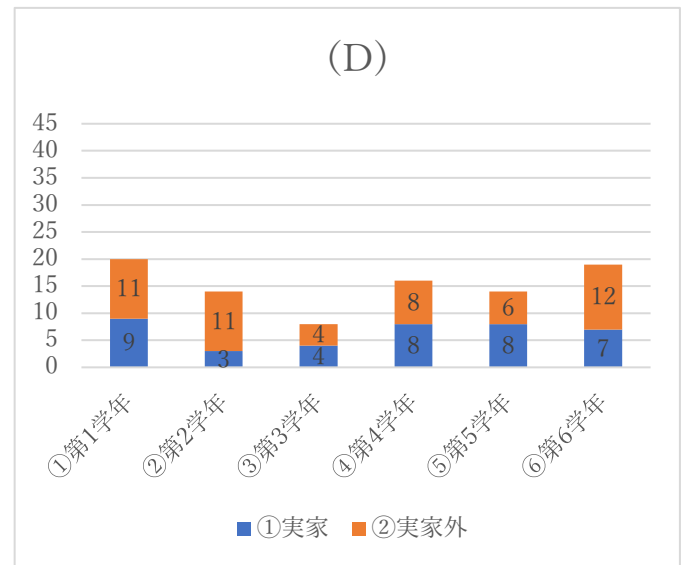
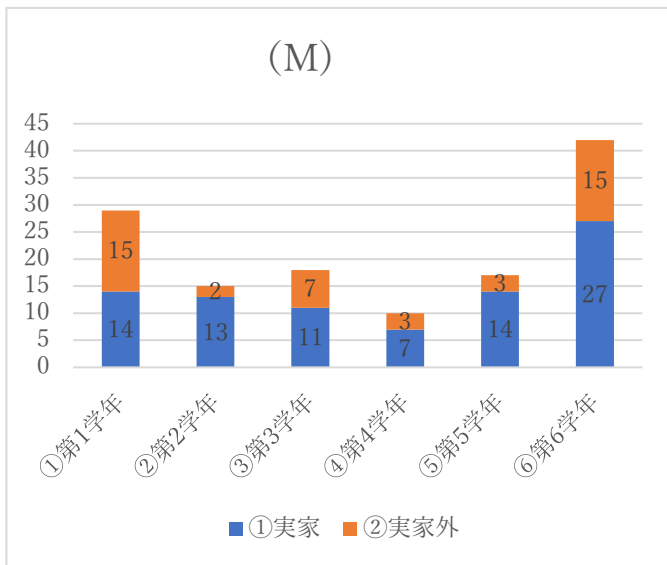
実施方法：Googleフォーム

	①第1学年			②第2学年			③第3学年			④第4学年			⑤第5学年			⑥第6学年			総計		
	現員	回答数	回答率	現員	回答数	回答率	現員	回答数	回答率	現員	回答数	回答率	現員	回答数	回答率	現員	回答数	回答率	現員	回答数	回答率
医学部	134	29	22%	142	15	11%	116	18	16%	124	10	8%	105	17	16%	125	42	34%	746	131	18%
歯学部	96	20	21%	111	14	13%	93	8	9%	90	16	18%	99	14	14%	101	19	19%	590	91	15%
薬学部	227	72	32%	231	30	13%	190	46	24%	176	39	22%	185	48	26%	172	34	20%	1,181	269	23%
看護学科	101	32	32%	108	22	20%	111	15	14%	90	15	17%							410	84	20%
理学療法学科	38	9	24%	36	5	14%	34	5	15%	37	6	16%							145	25	17%
作業療法学科	16	4	25%	16	5	31%	16	1	6%	19	5	26%							67	15	22%
総計	612	166	27%	644	91	14%	560	93	17%	536	91	17%	389	79	20%	398	95	24%	3,139	615	20%

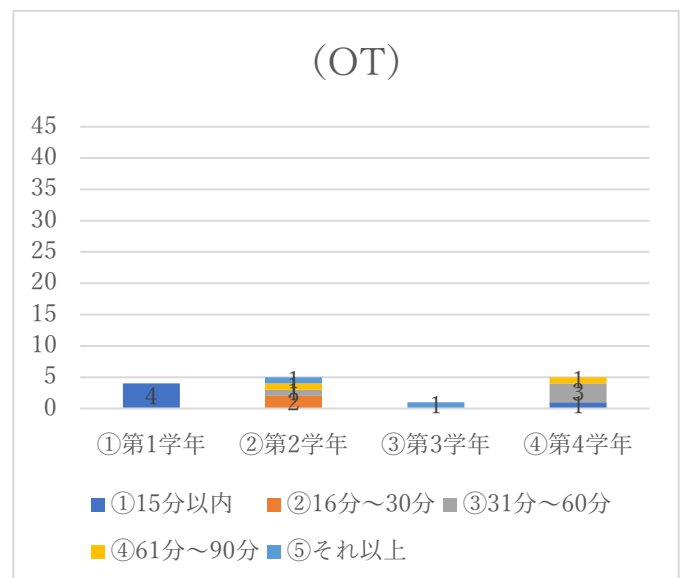
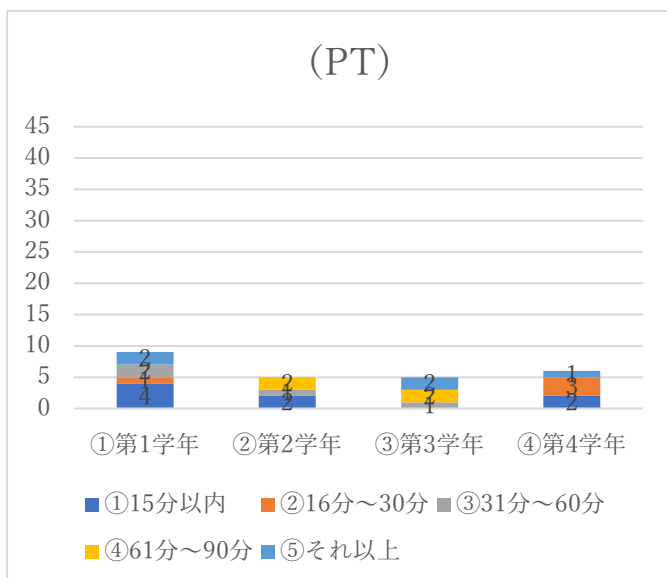
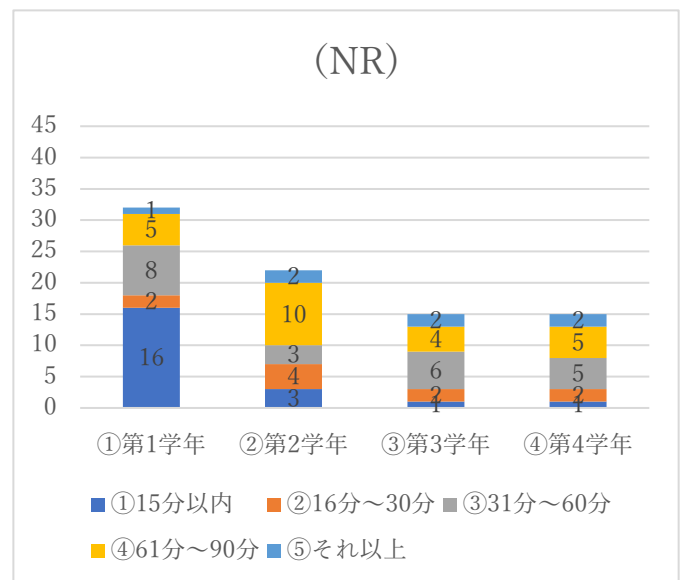
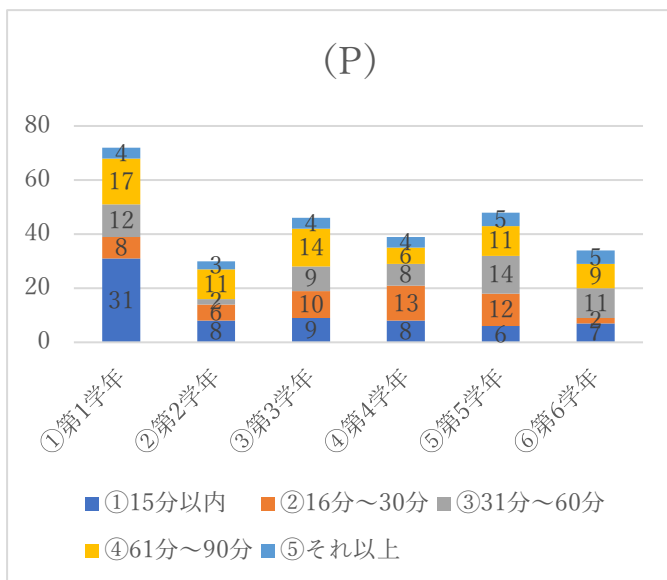
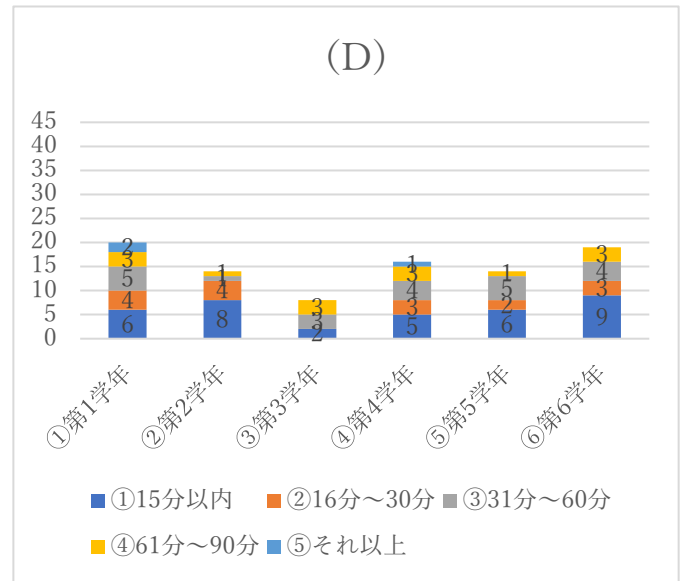
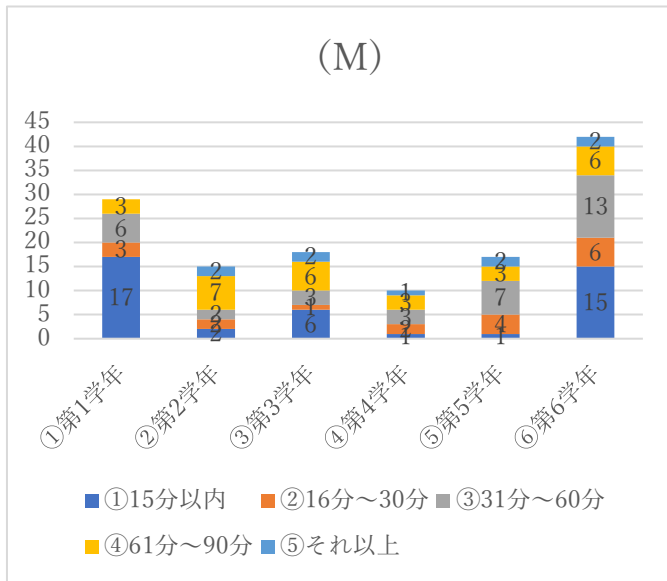
4.成績は学年の中で、どのくらいだと思いますか？



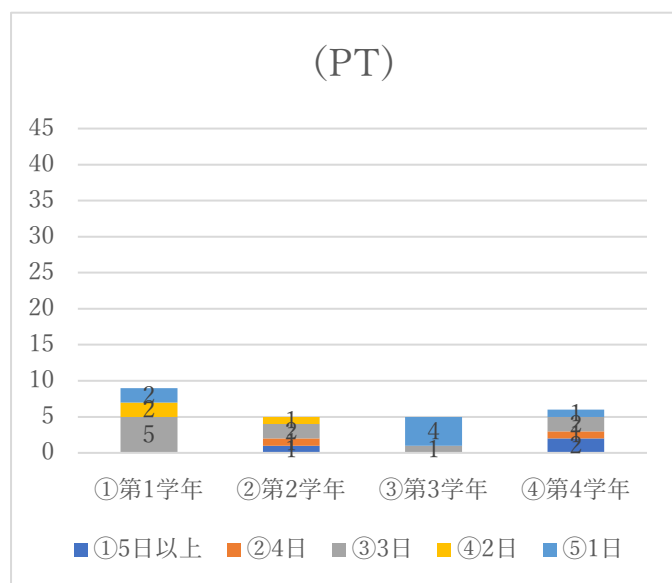
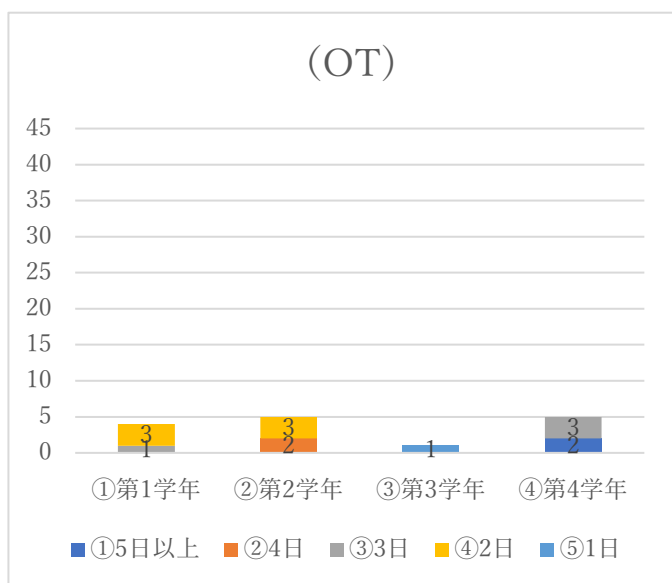
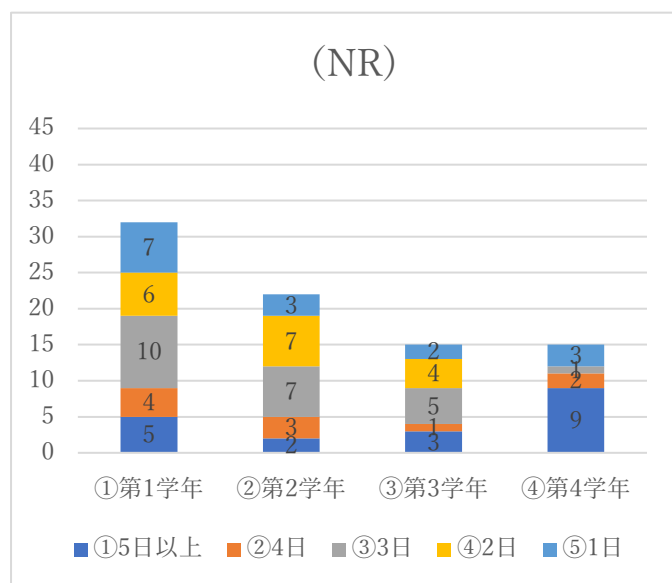
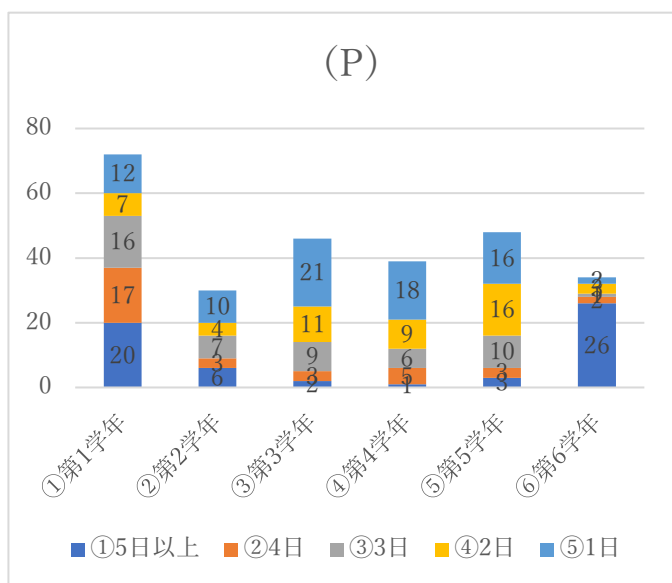
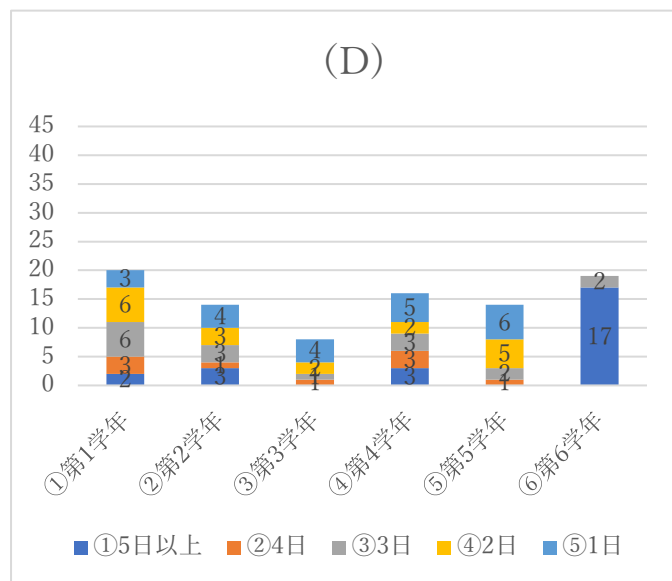
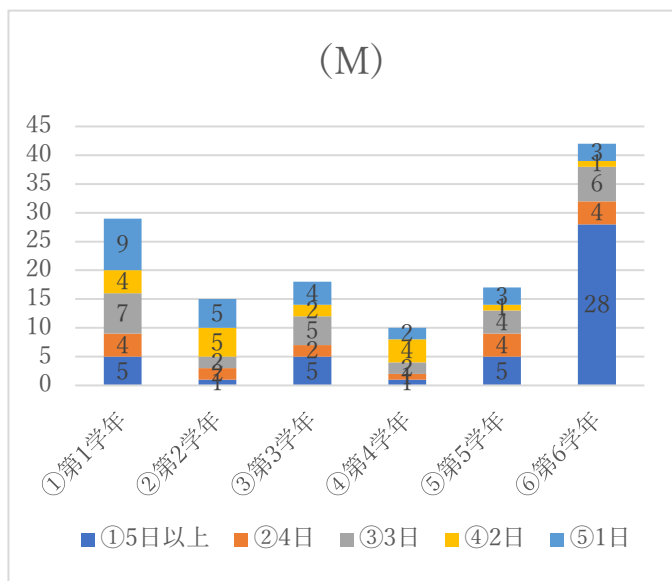
5.実家通学ですか？



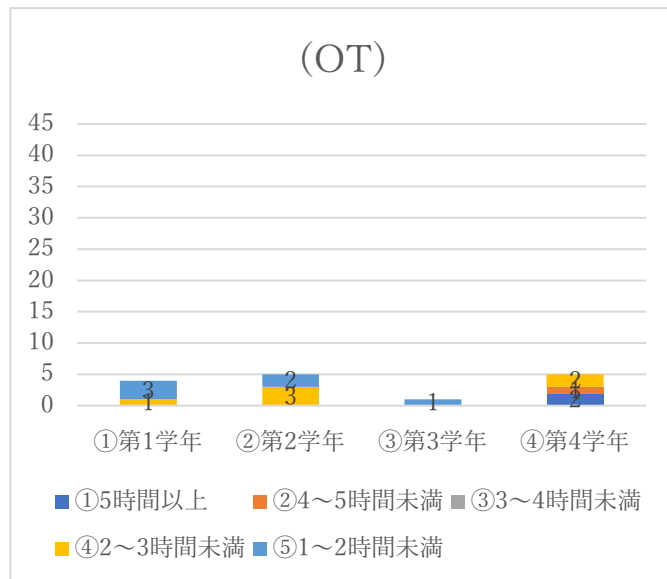
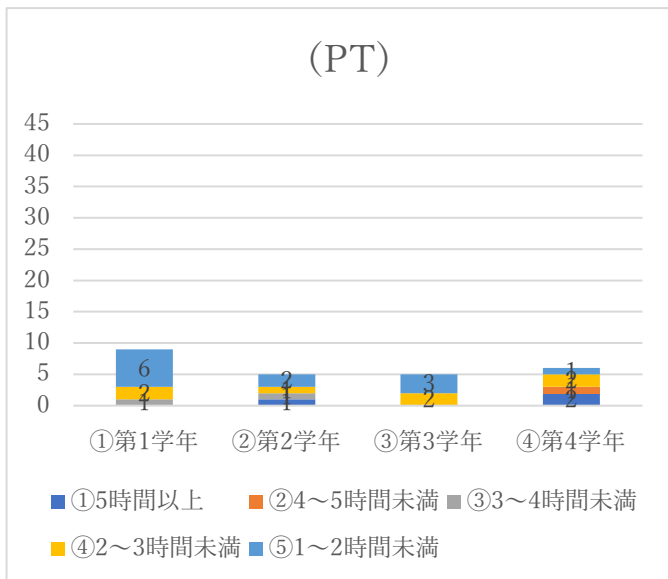
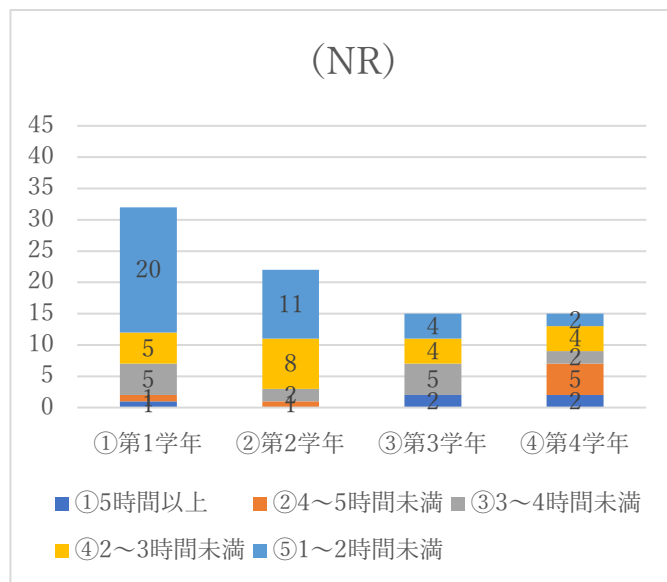
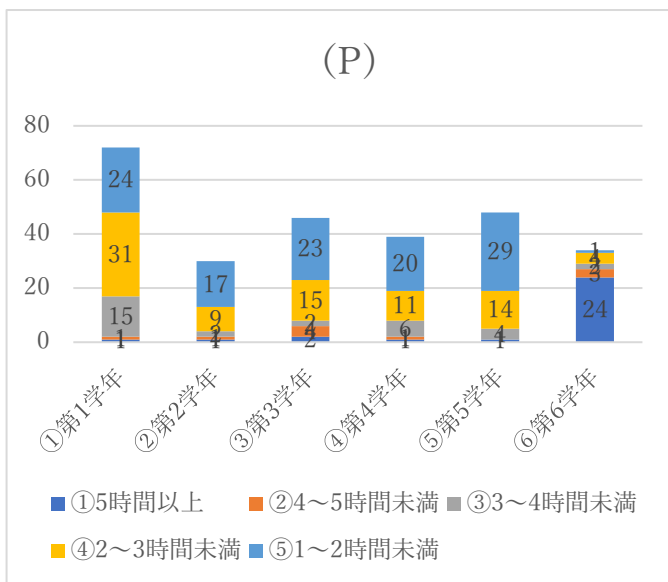
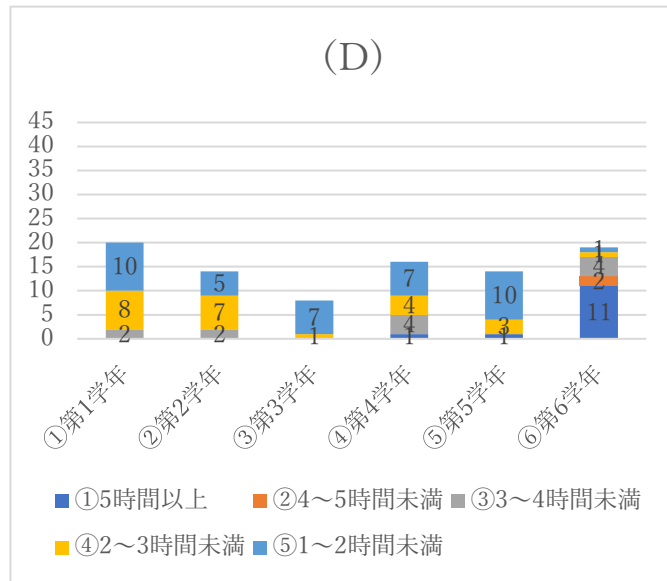
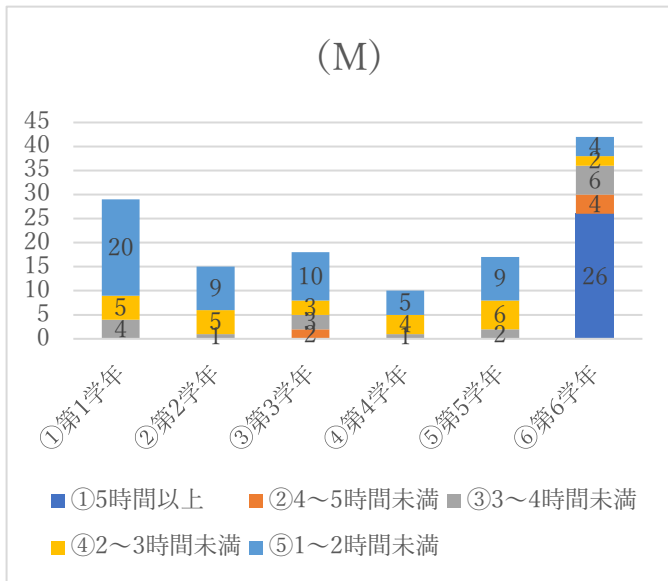
6.通学時間(片道)はどのくらいですか？



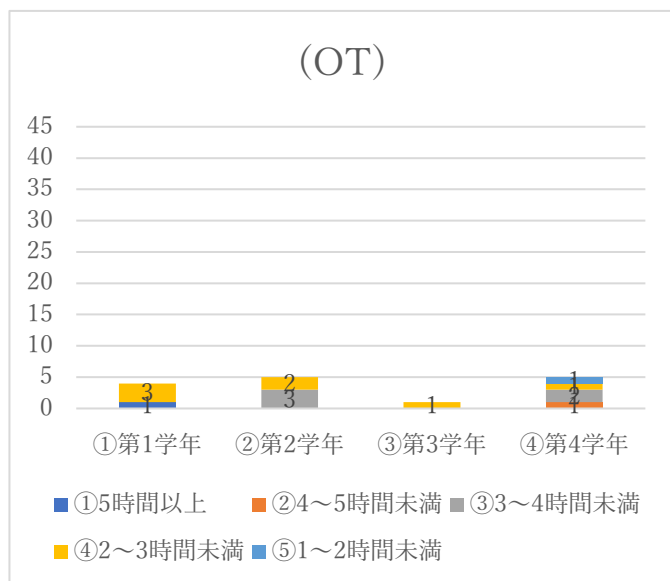
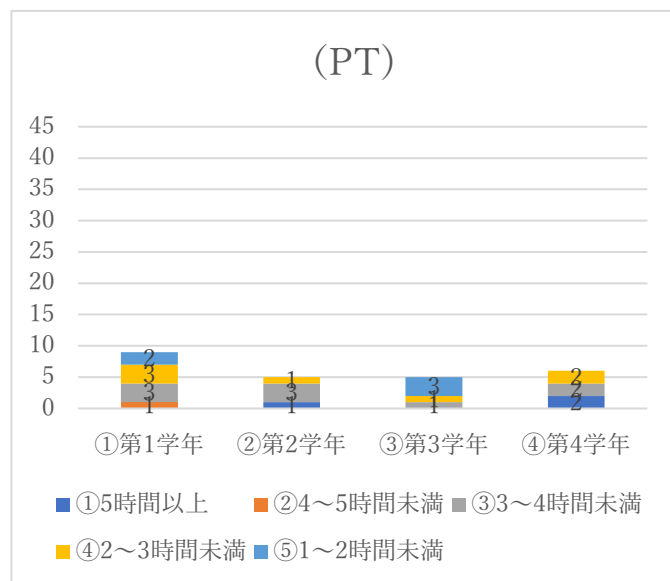
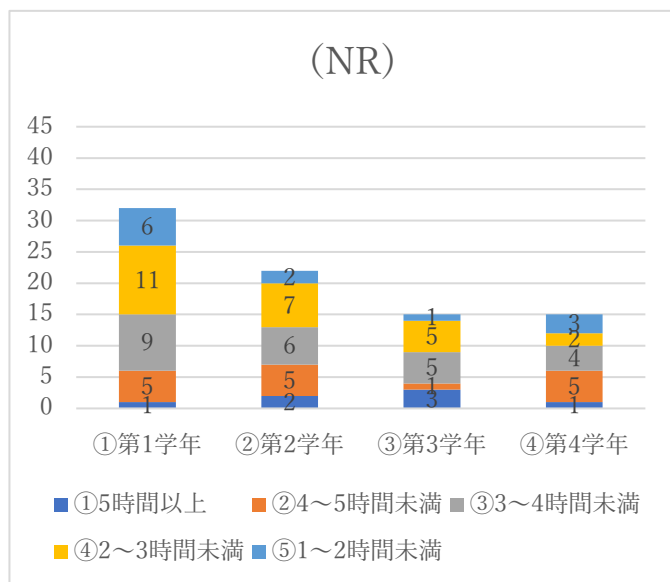
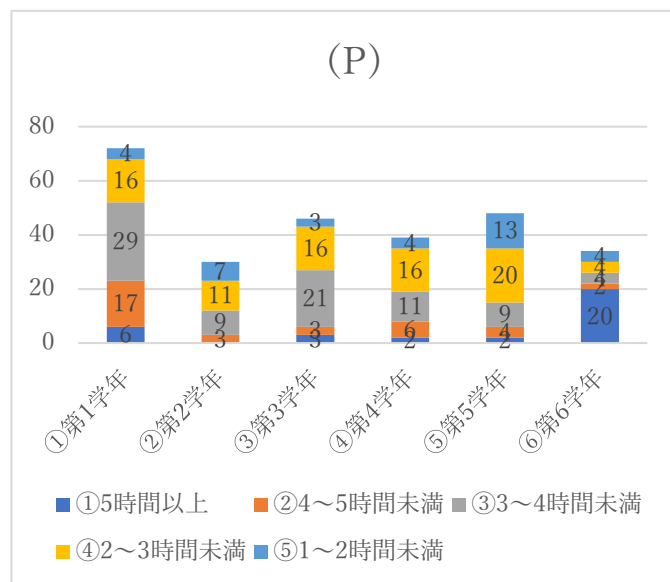
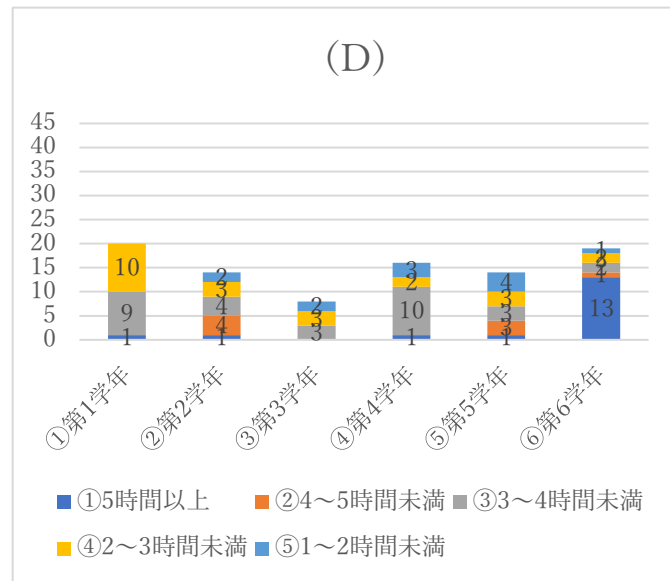
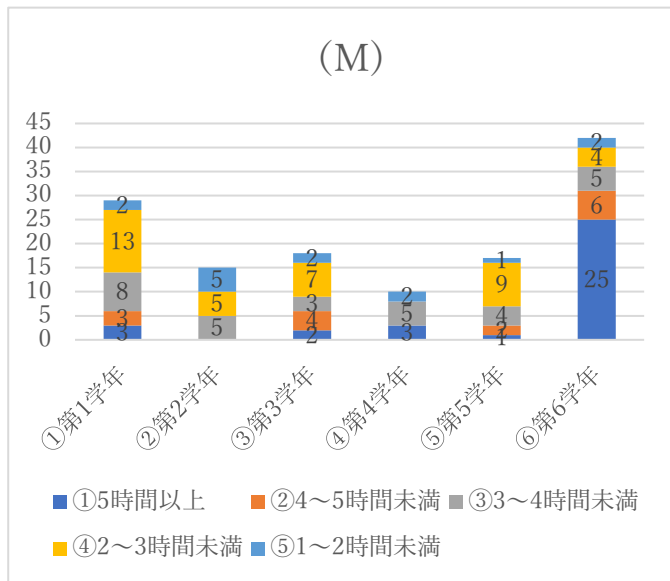
7. 普段、授業以外に、平均して週に何日程度、学修（講義の予習復習、自身の興味に関する学修等）しますか？



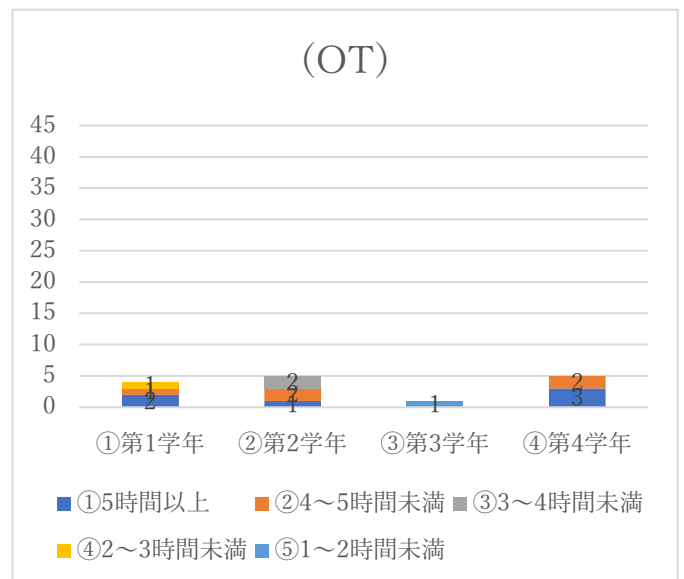
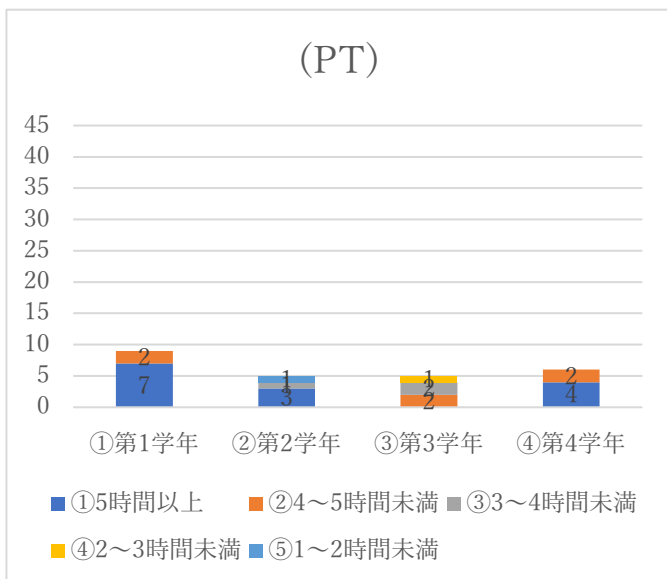
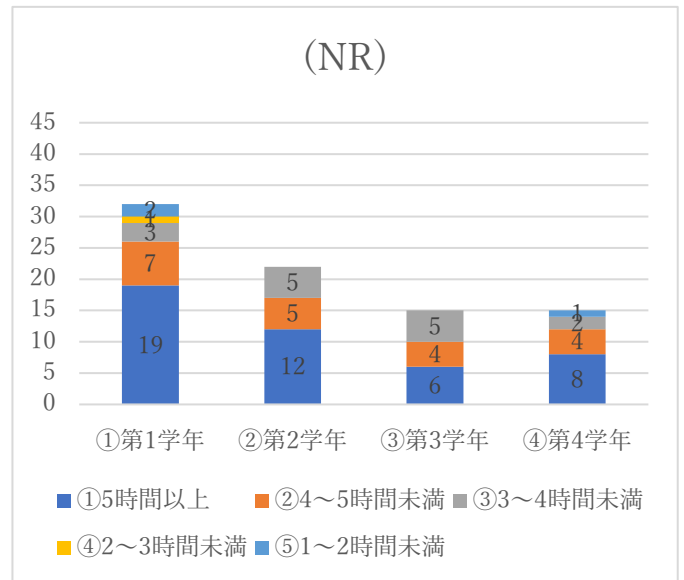
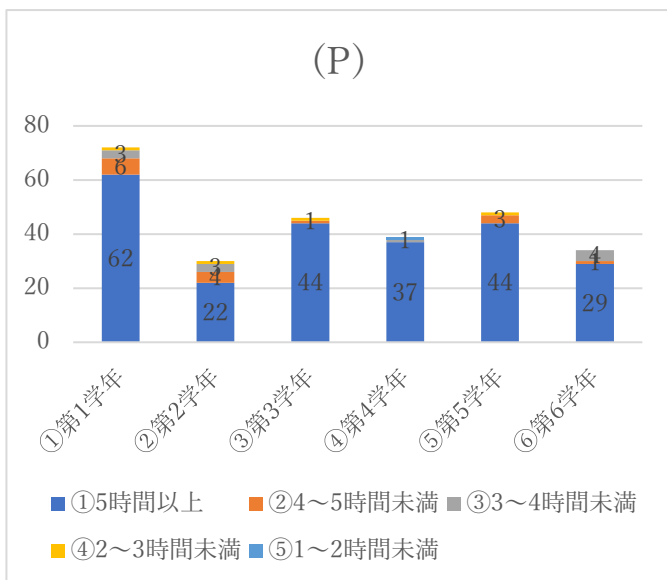
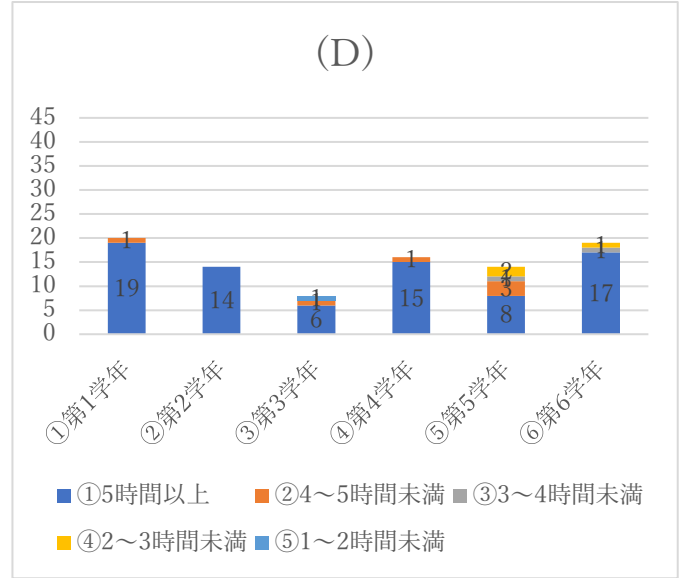
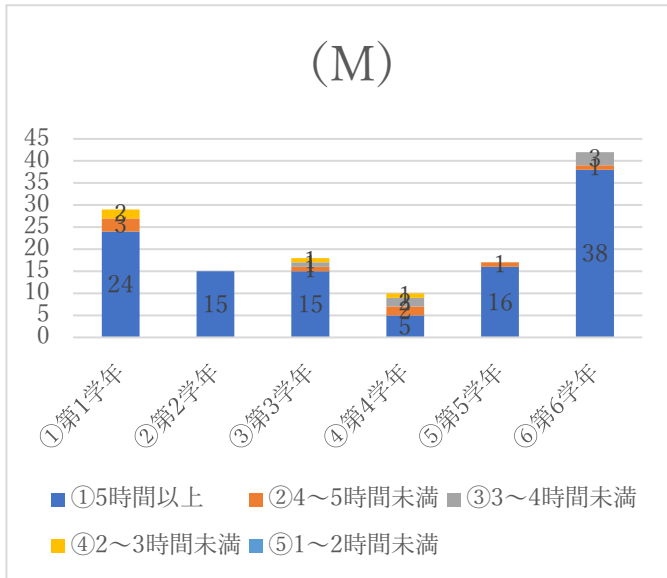
8.Q7の学修日の1日あたりの学修時間はどのくらいですか？



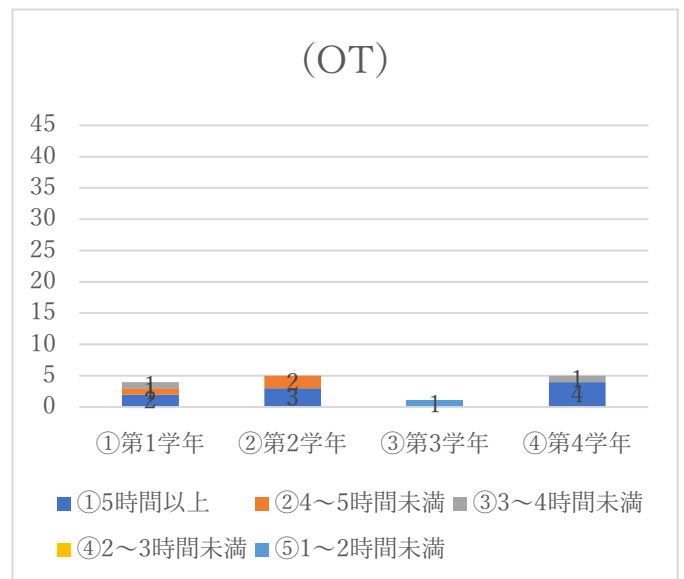
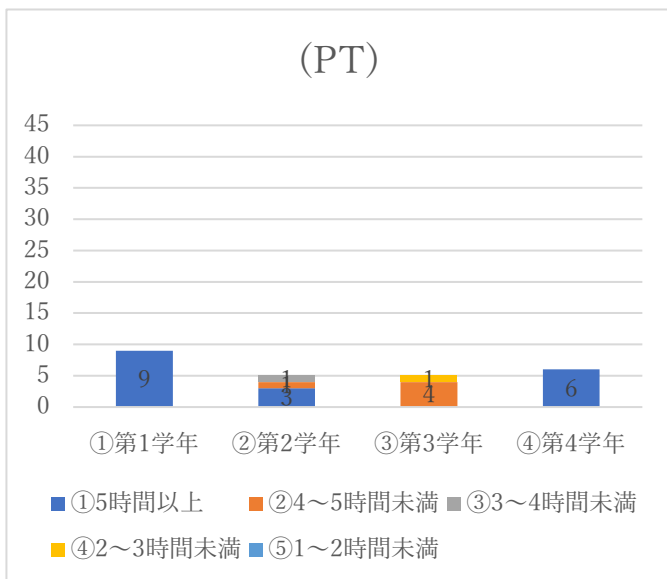
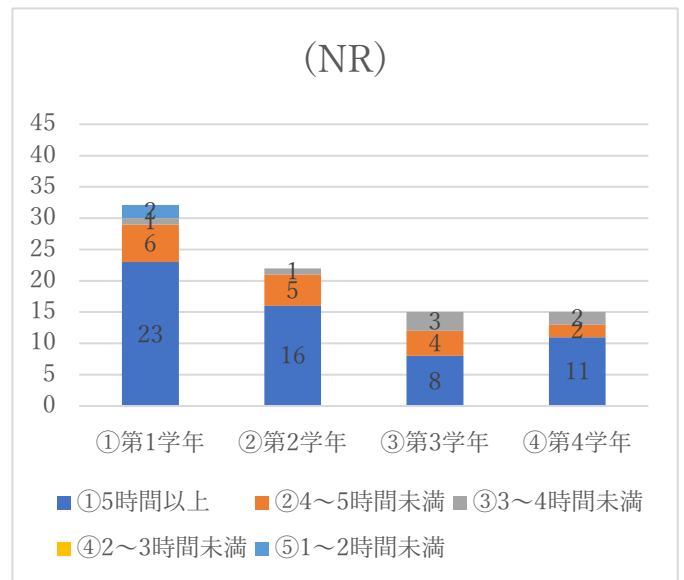
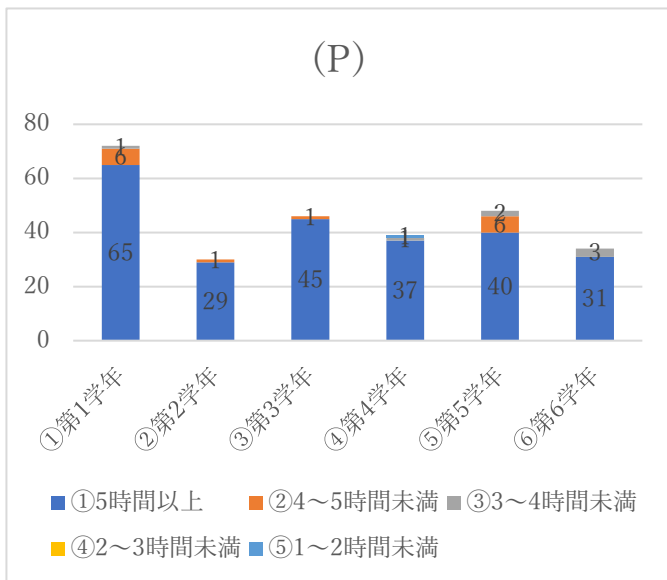
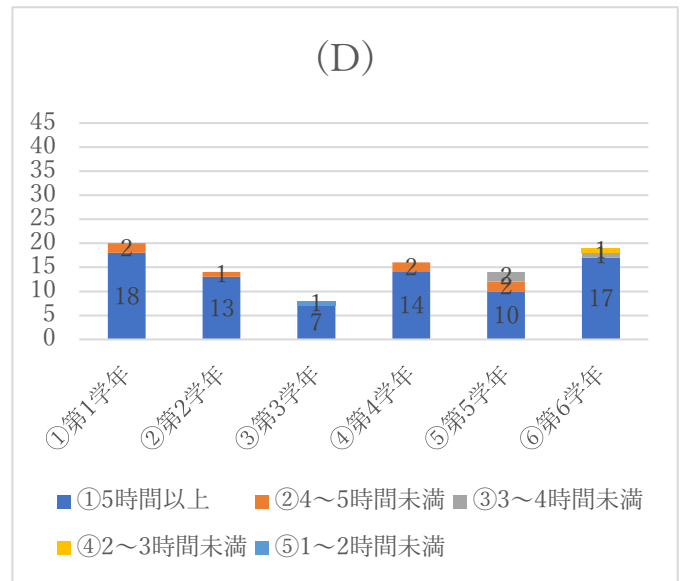
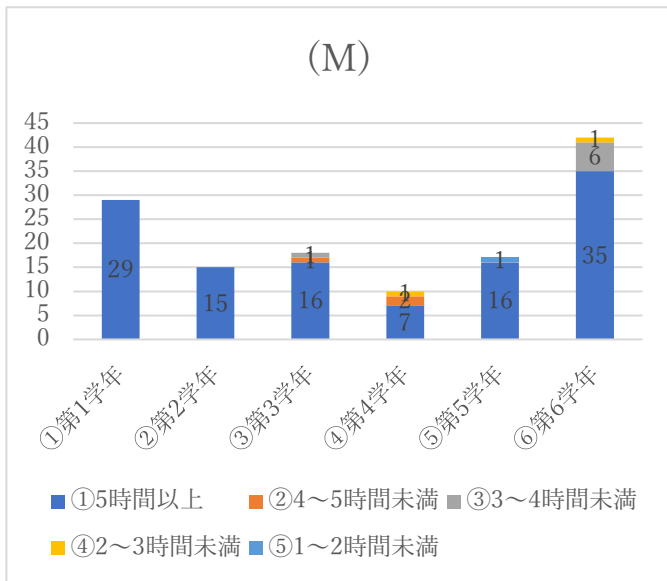
9. 普段の1日の理想的な学修時間は授業を受けている時間以外にどのくらい必要だと思いますか？



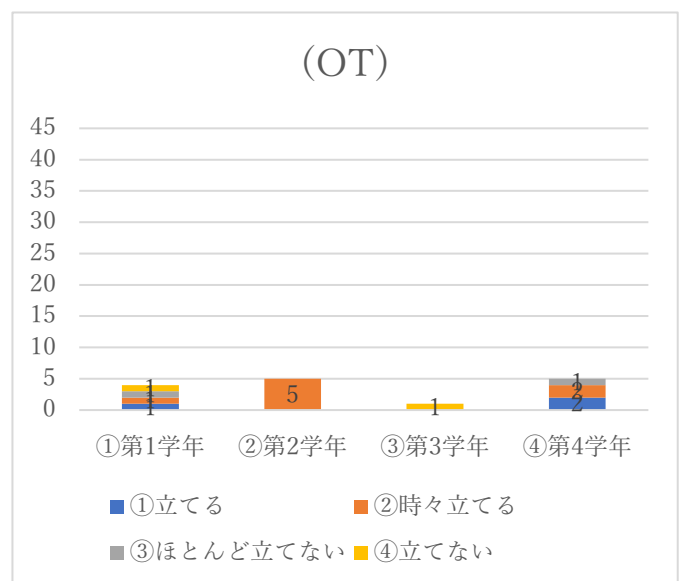
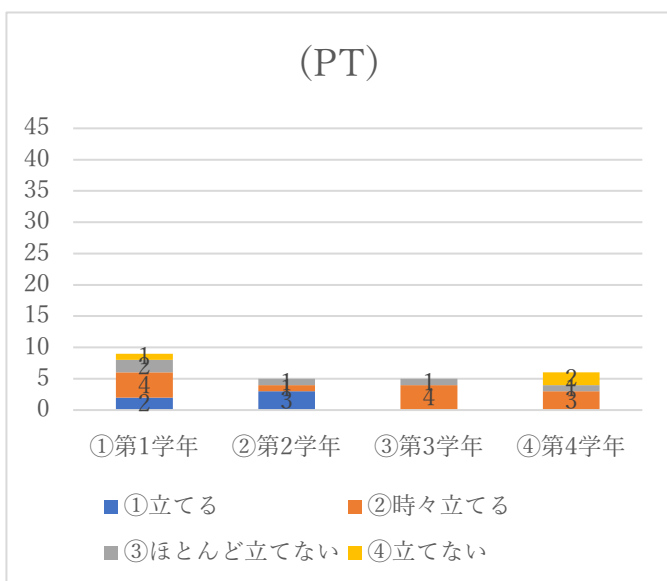
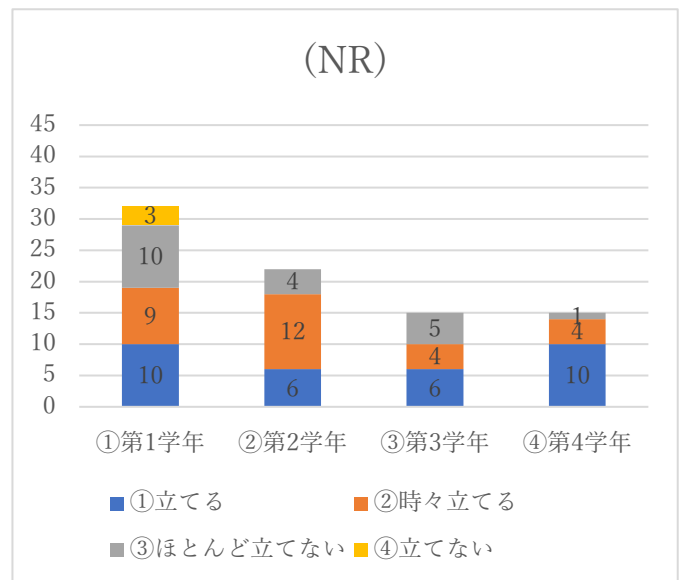
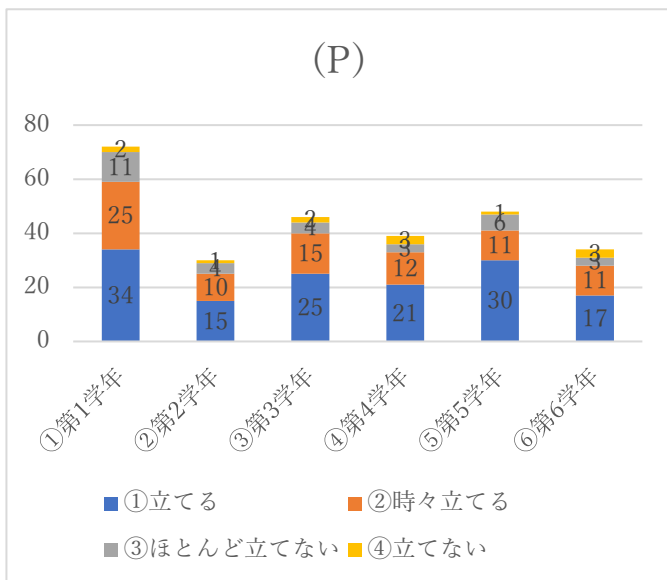
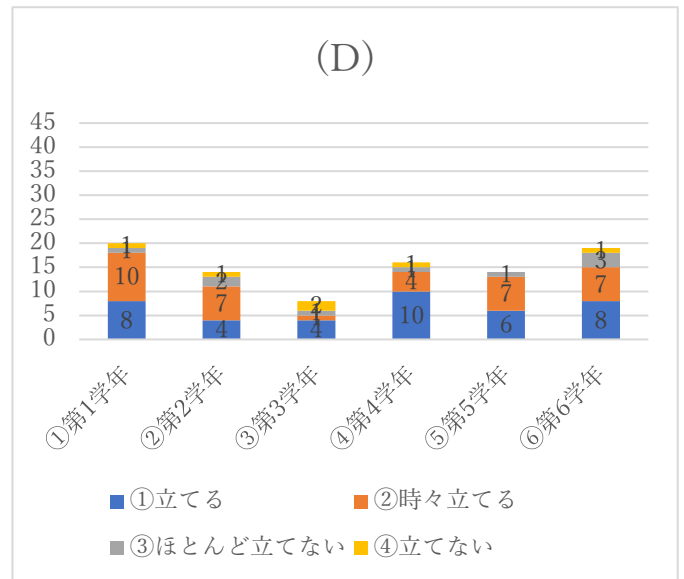
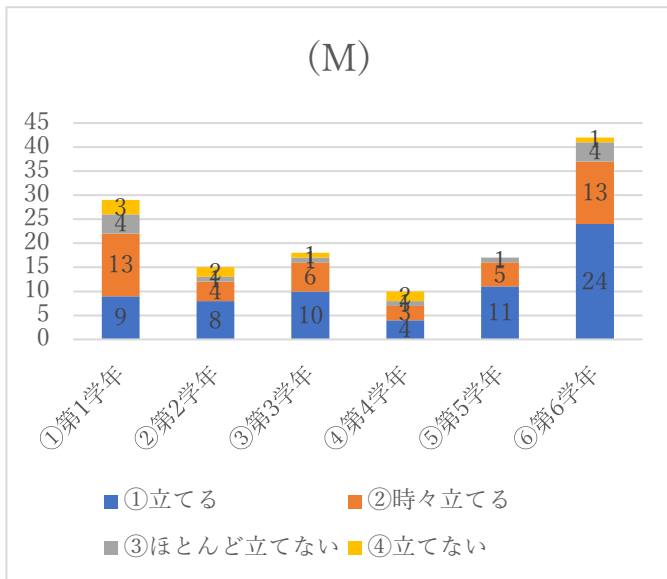
10. 試験期間中の1日の学修時間はどのくらいですか？



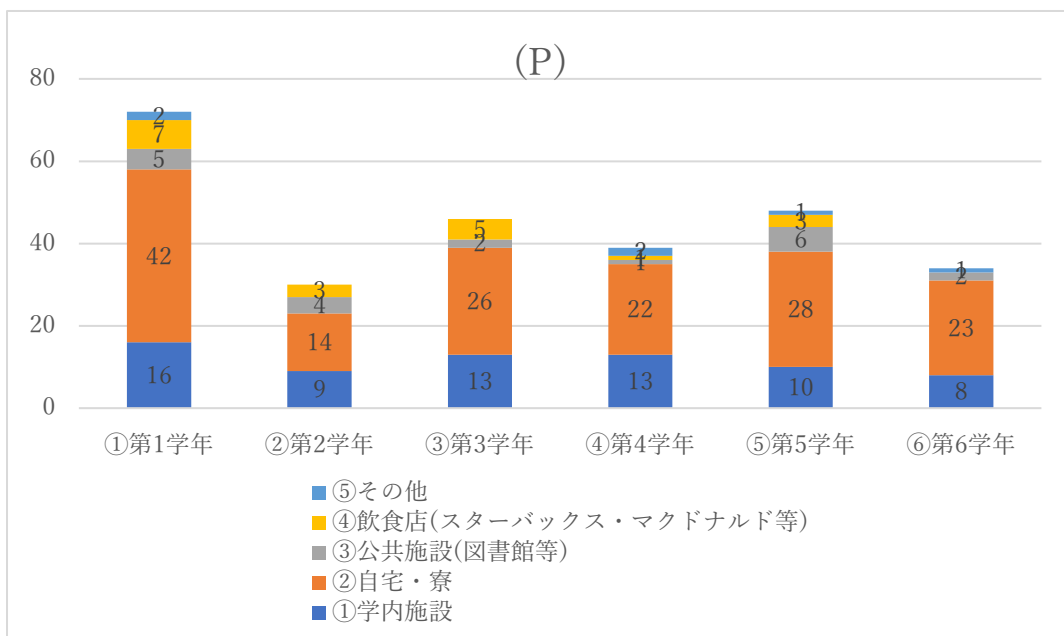
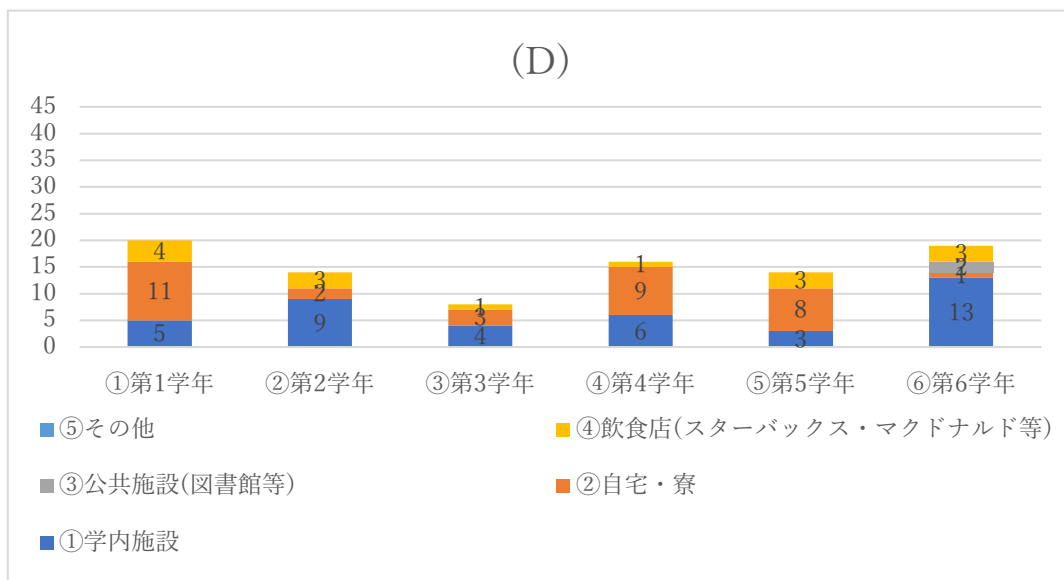
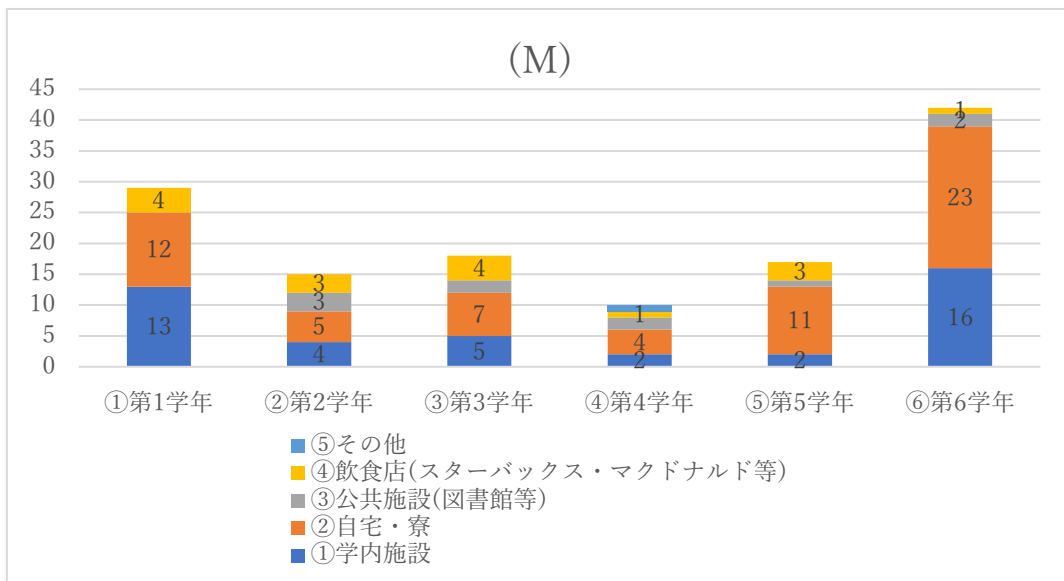
11. 試験期間中の1日の理想的な学修時間はどれくらい必要だと思いますか？

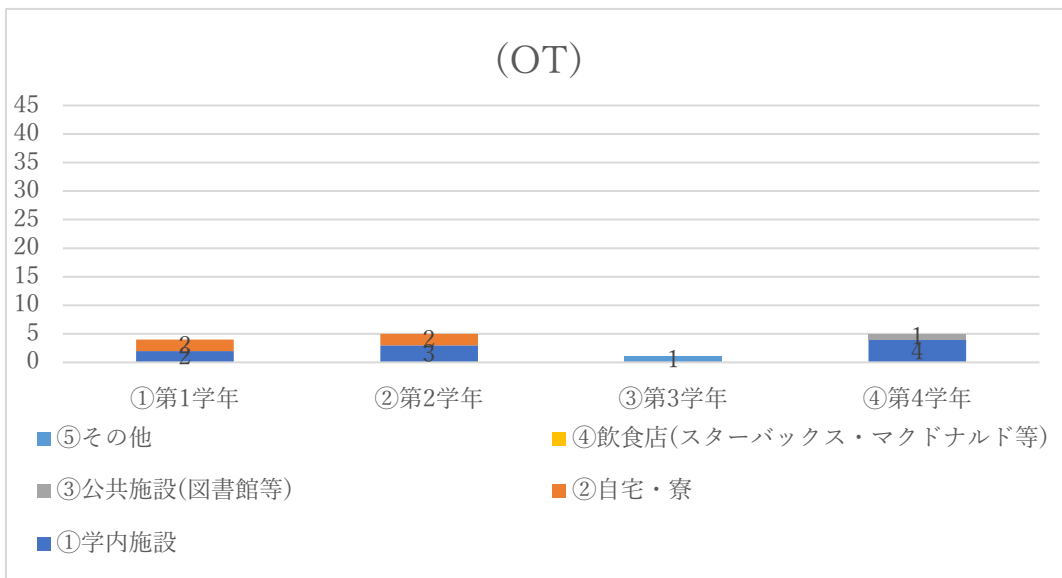
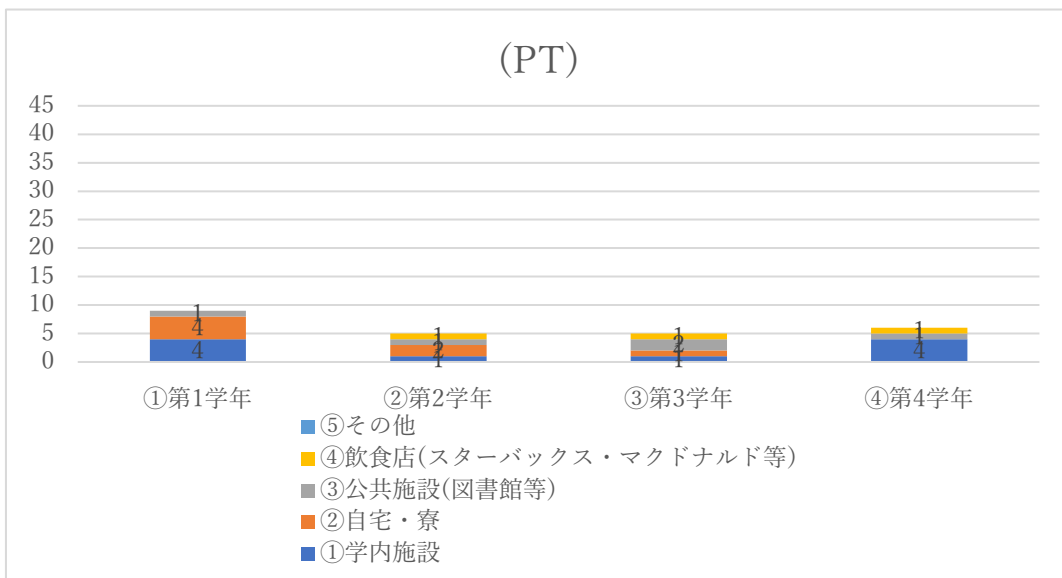
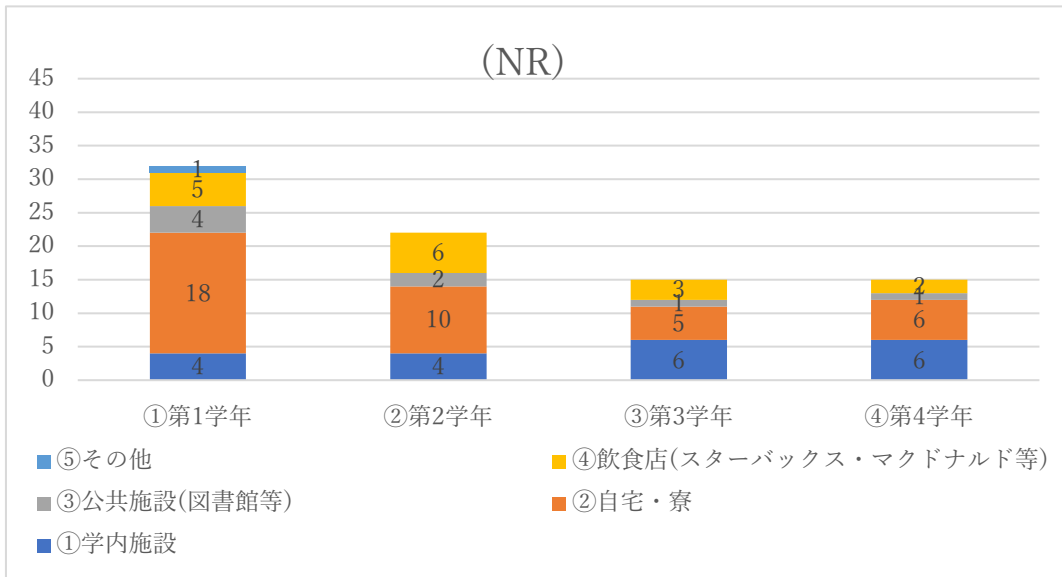


12.試験前には学修計画を立てていますか？

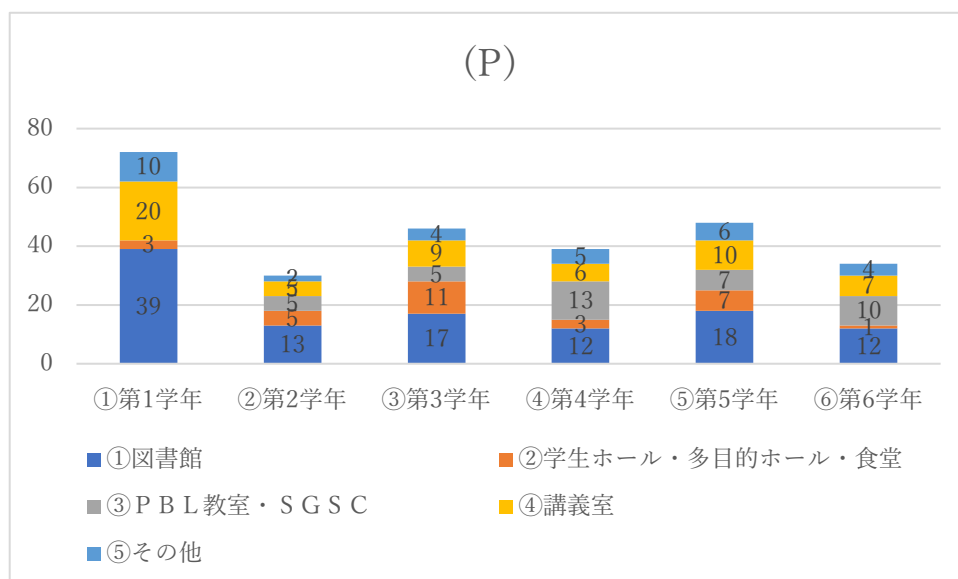
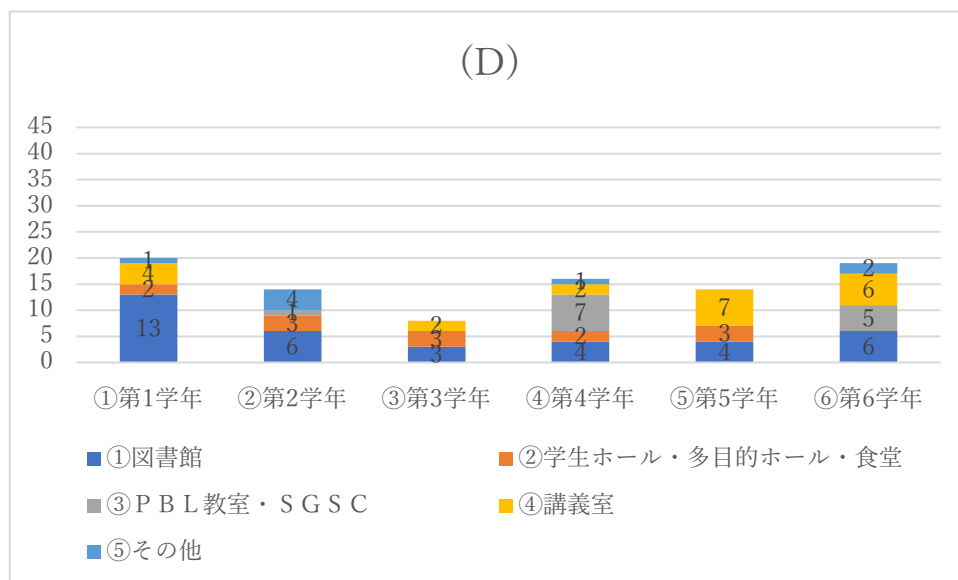
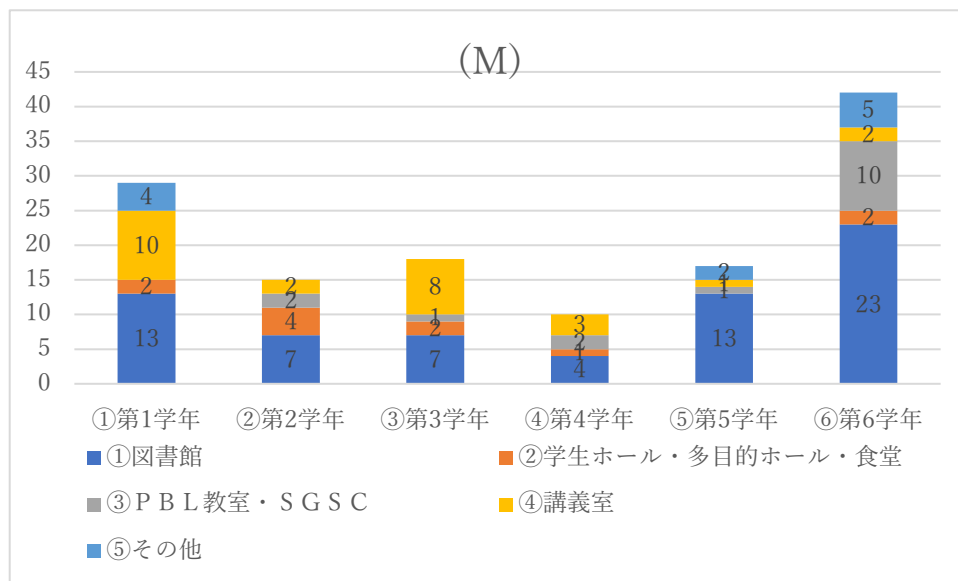


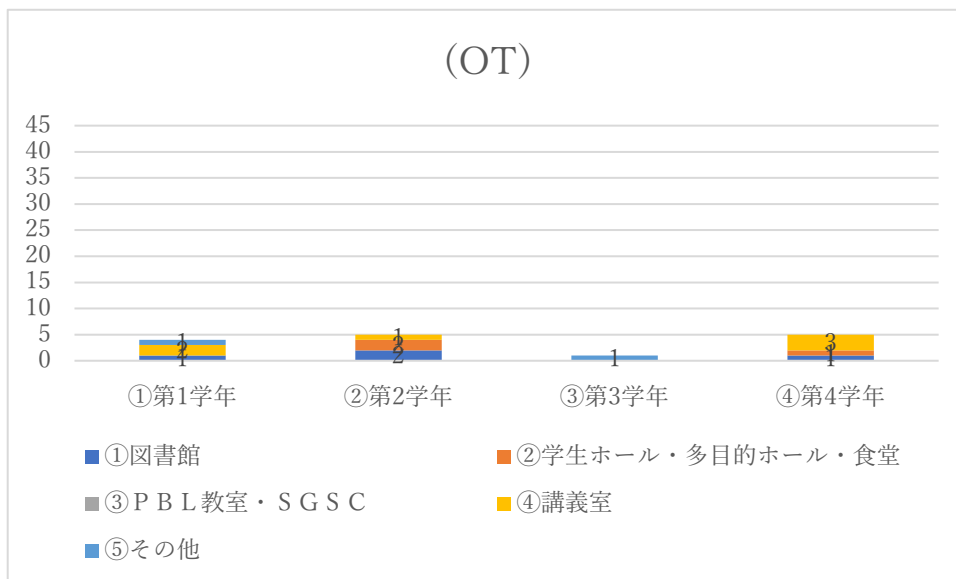
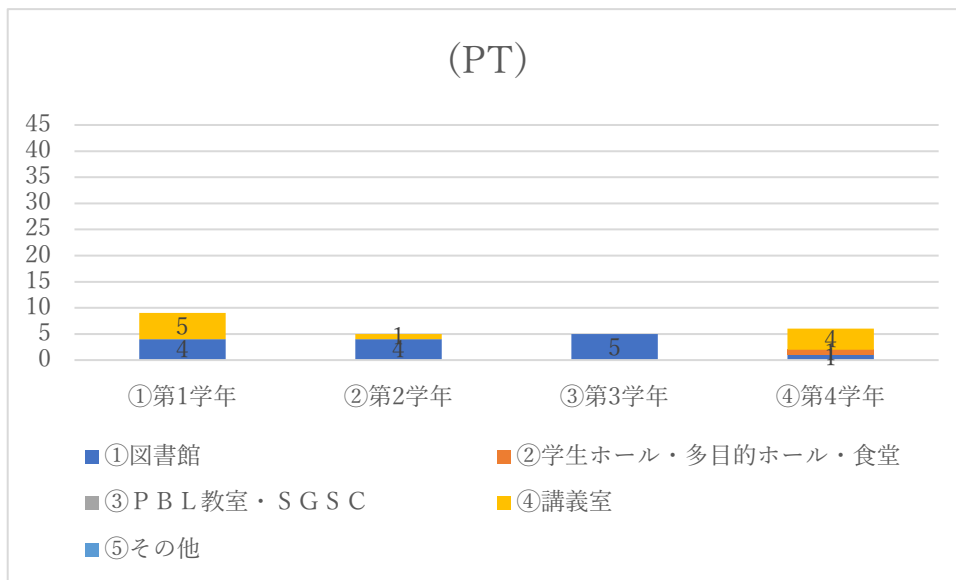
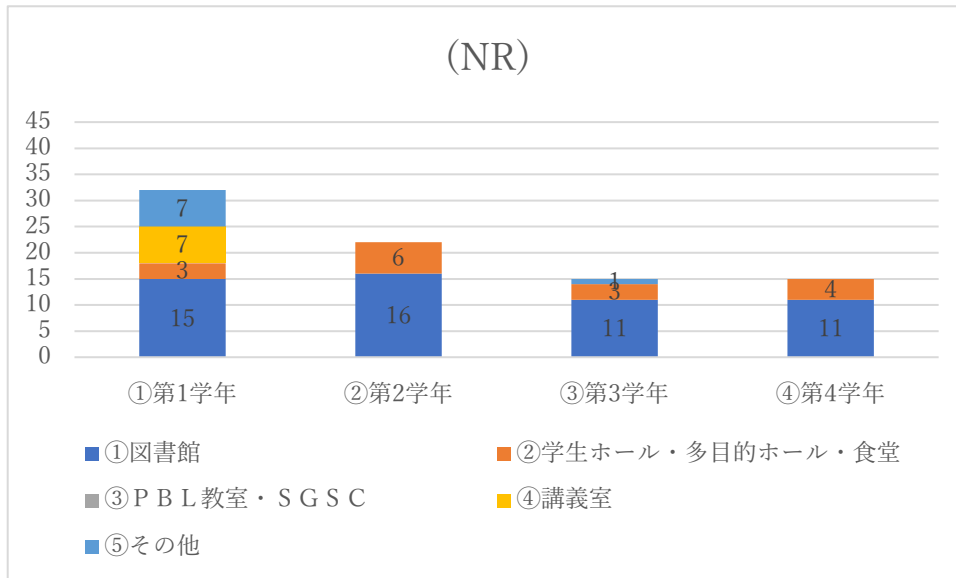
15.一番快適な学修できる場所はどこですか？



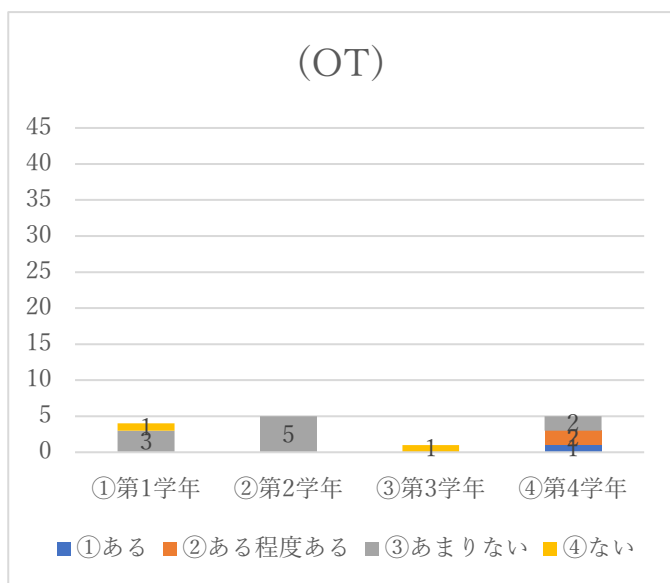
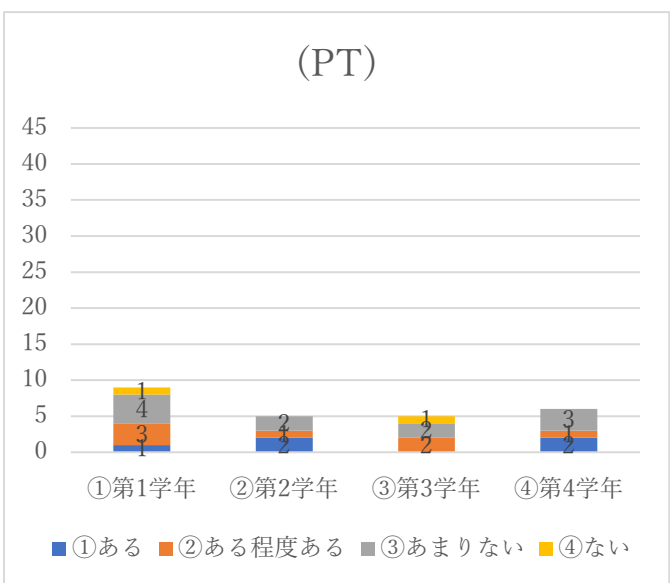
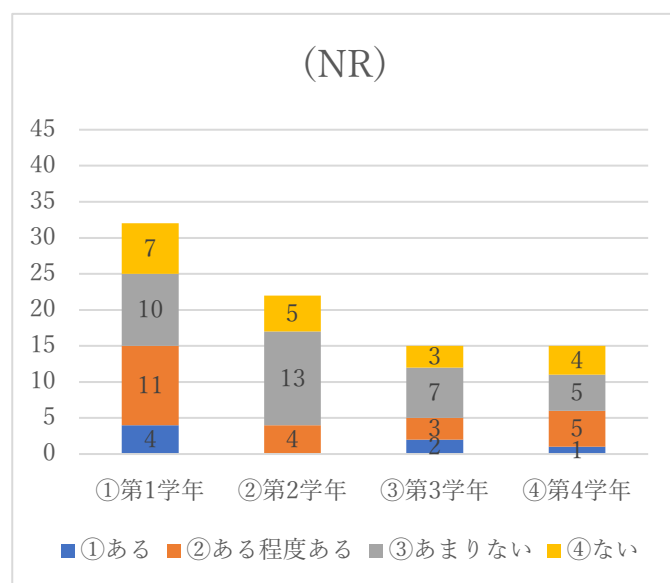
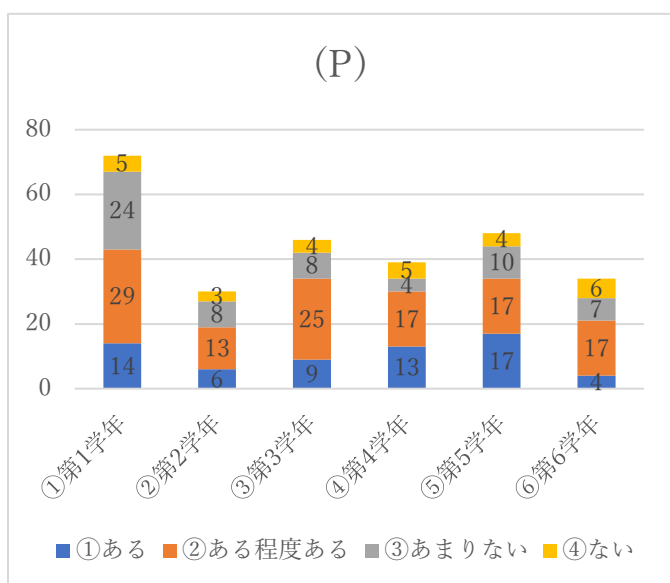
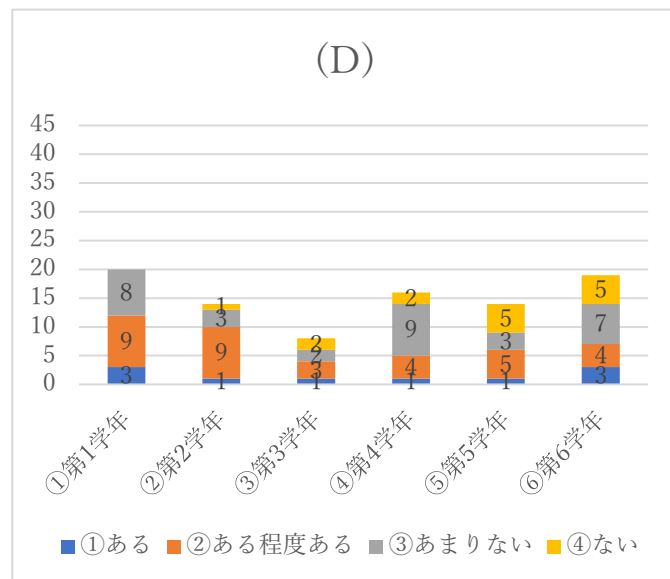
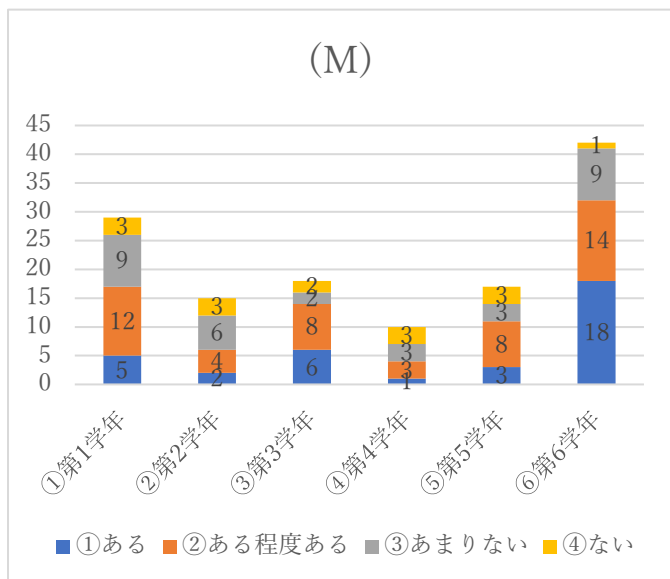


16. 学内施設で学修する場合、どの場所が一番快適に学修できますか？



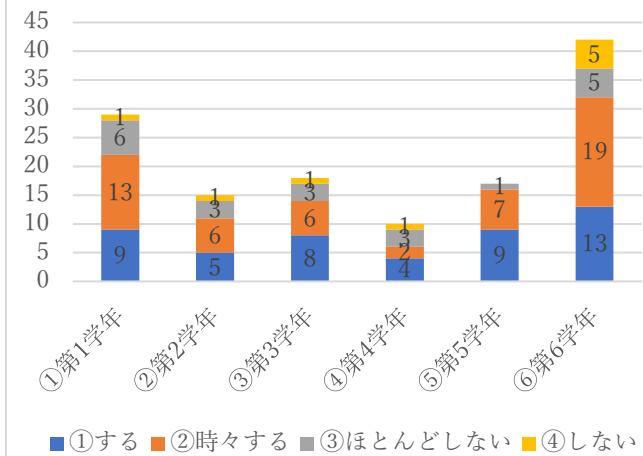


18. 「研究」に興味・関心がありますか？

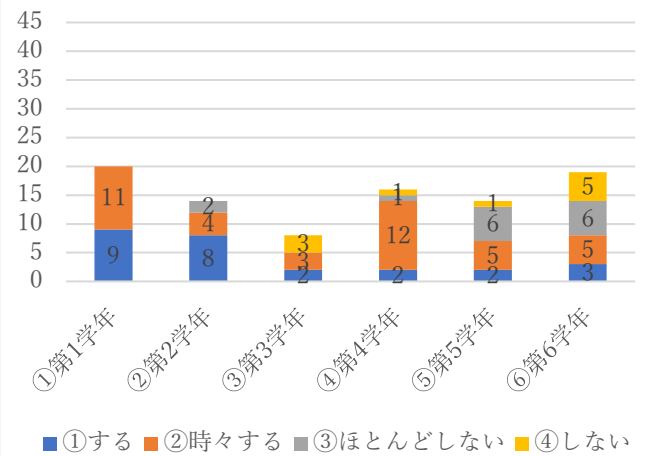


19.授業前にシラバスを確認しますか？

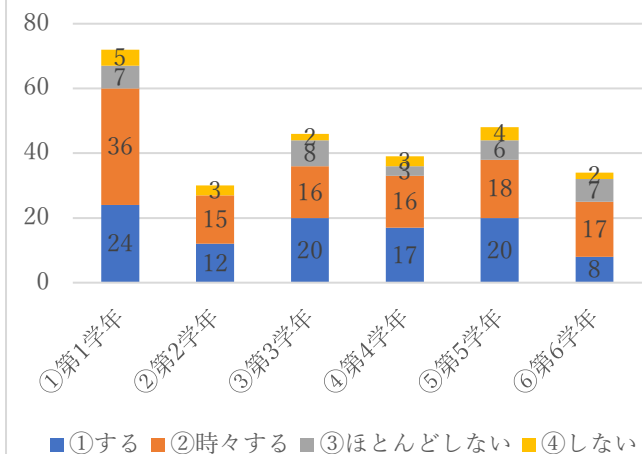
(M)



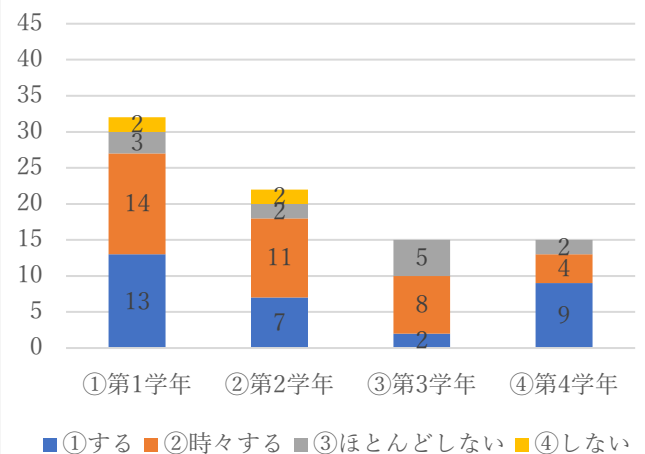
(D)



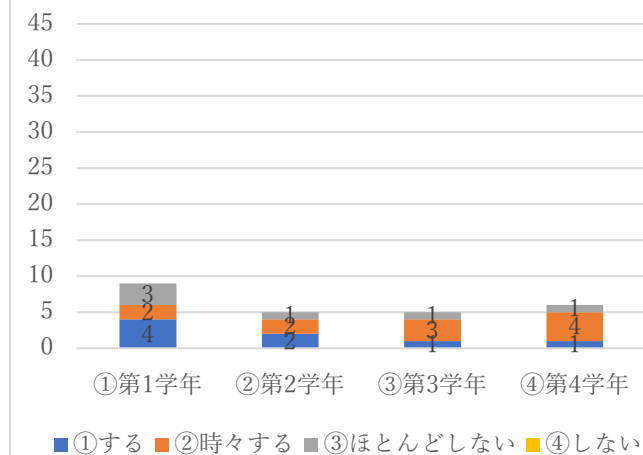
(P)



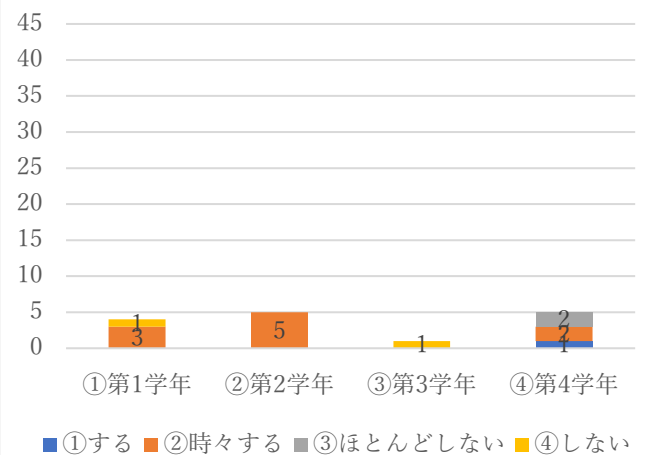
(NR)



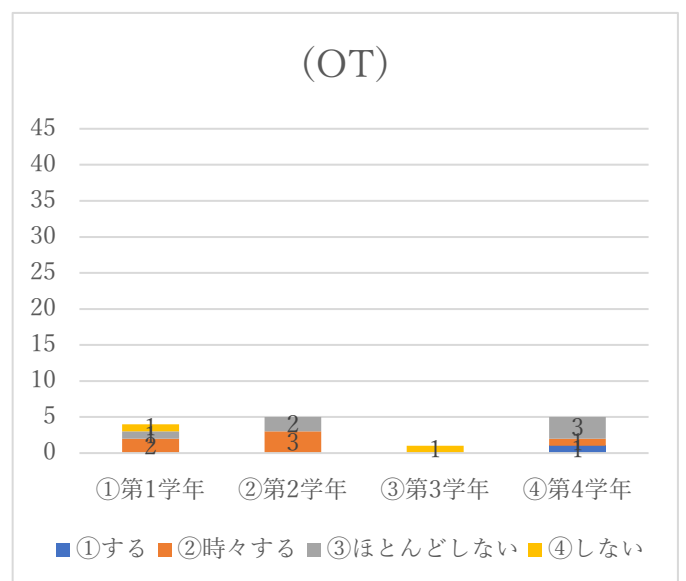
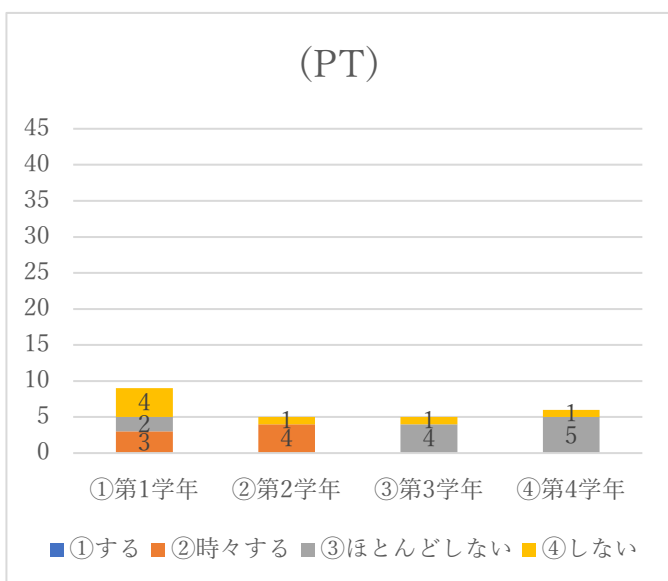
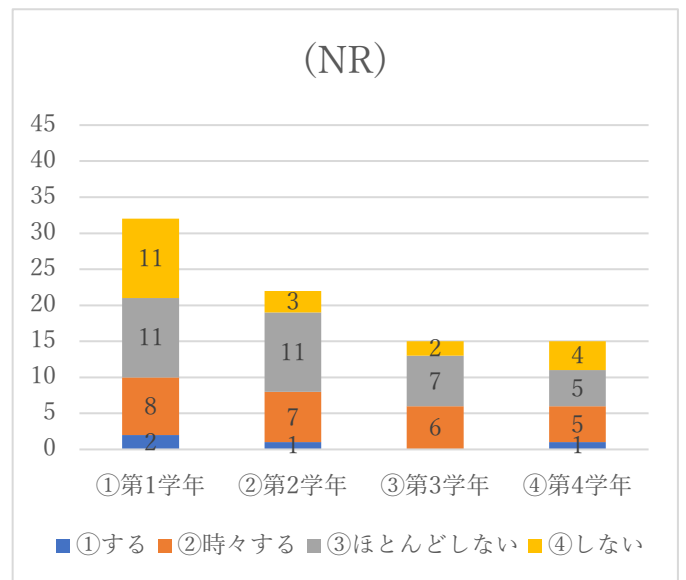
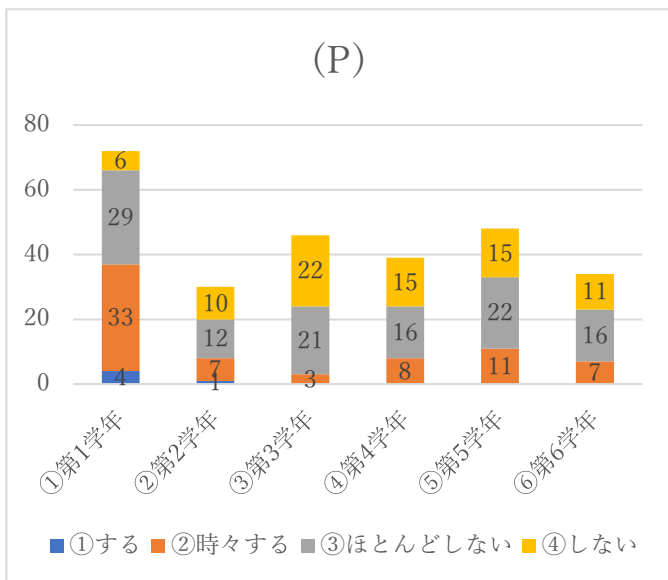
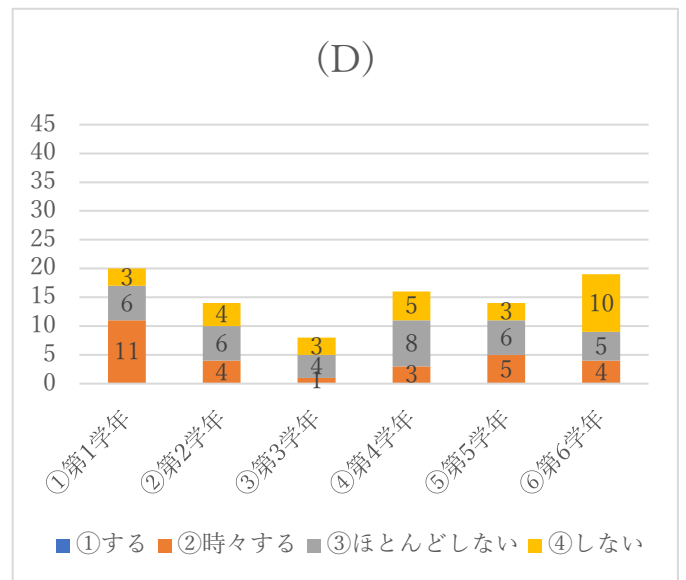
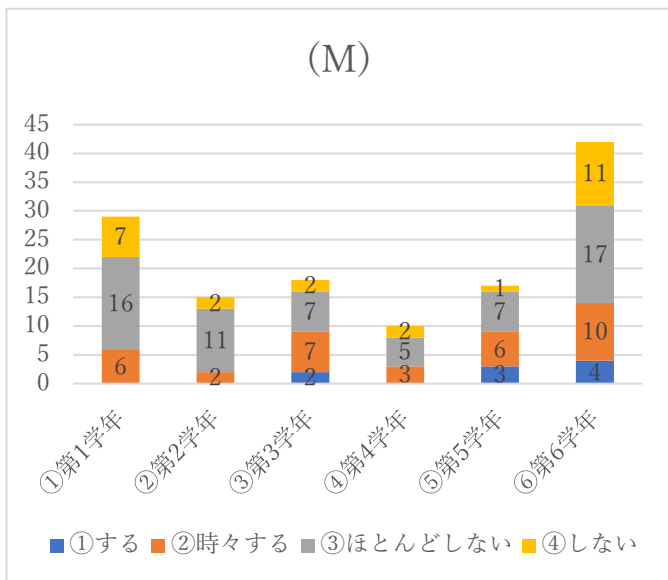
(PT)



(OT)

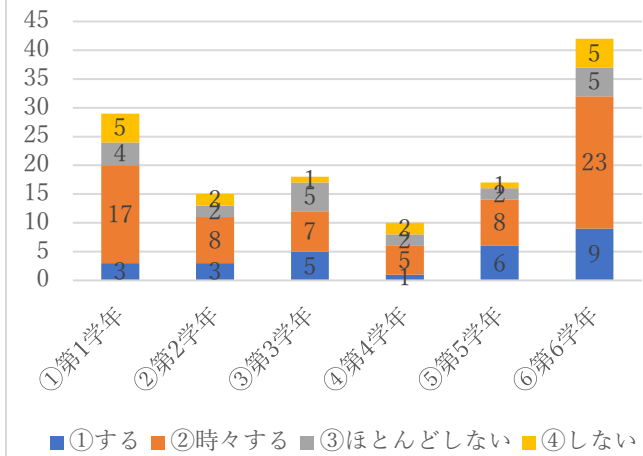


20.授業前にシラバスを確認し、予習しますか？

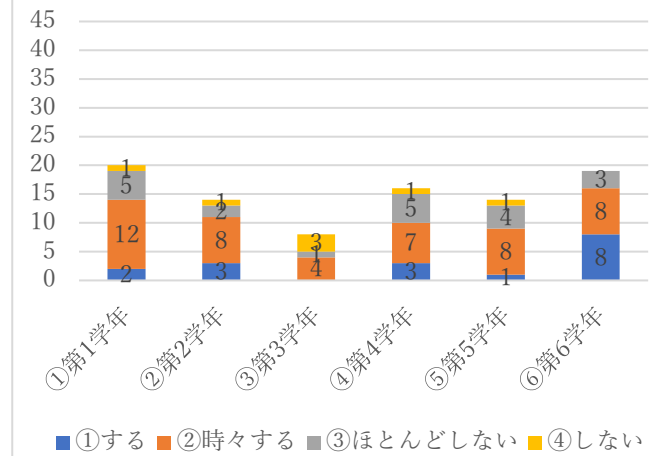


21.授業後に復習しますか？

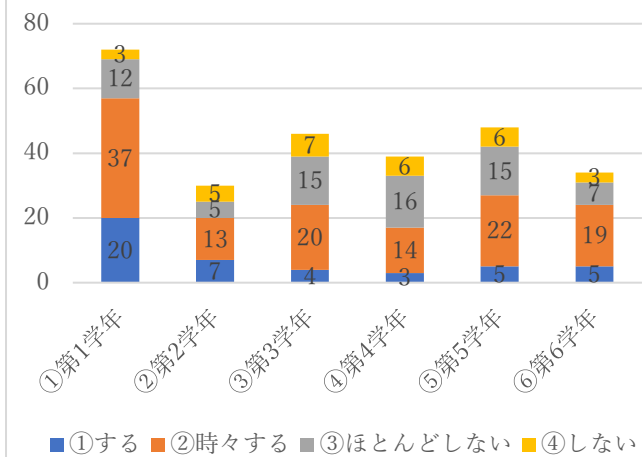
(M)



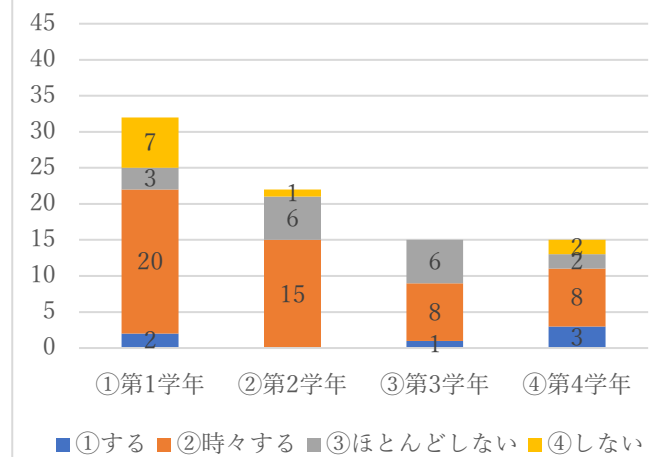
(D)



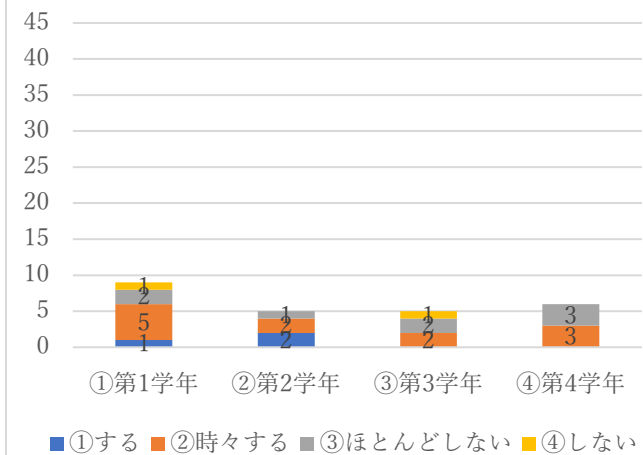
(P)



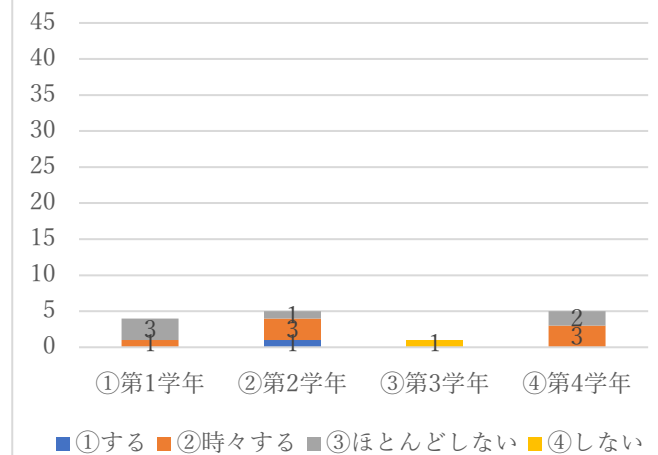
(NR)



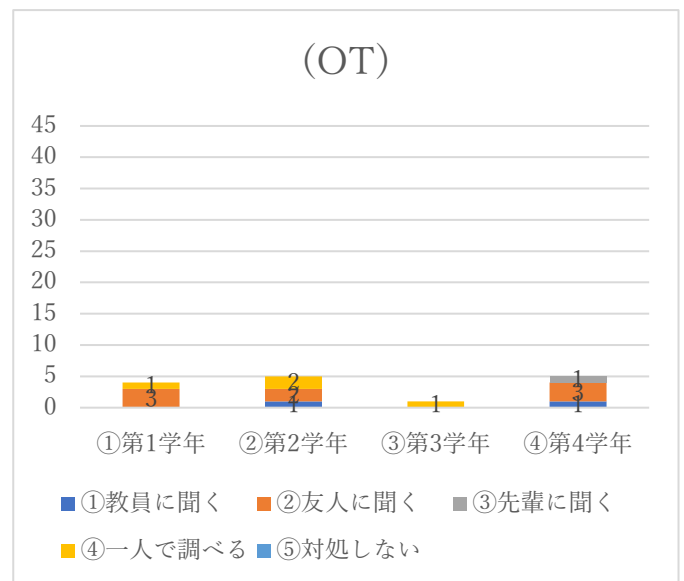
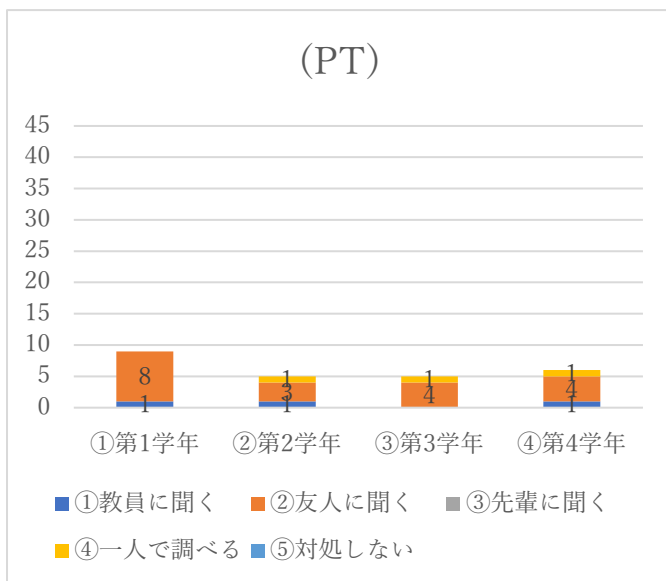
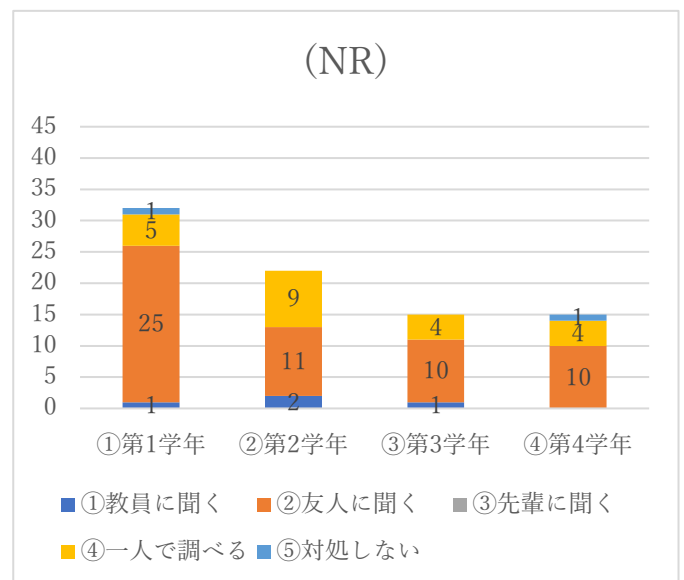
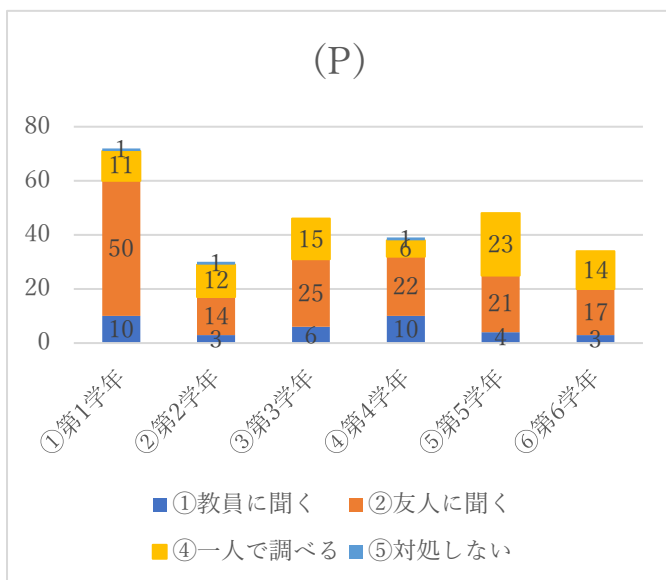
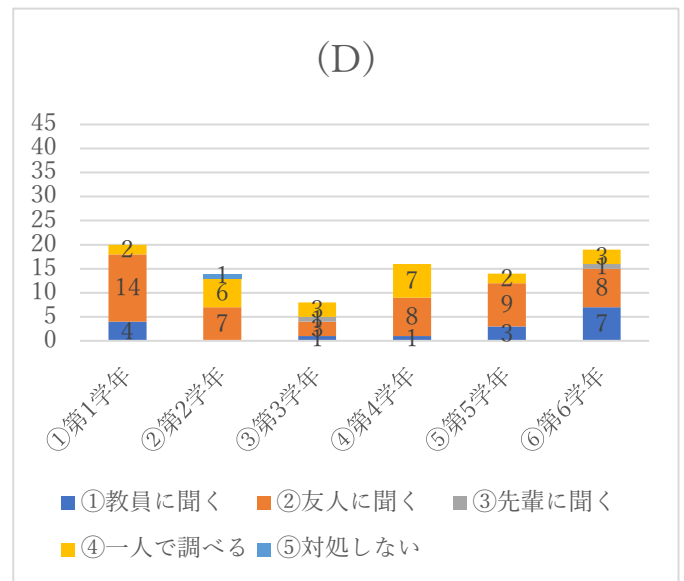
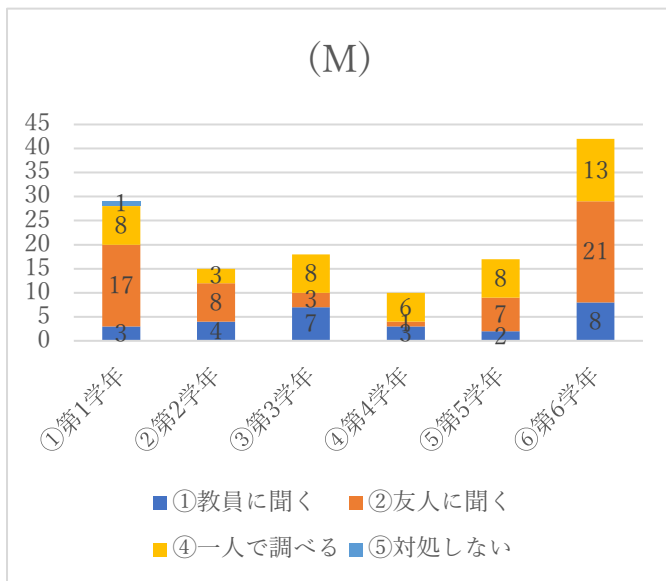
(PT)



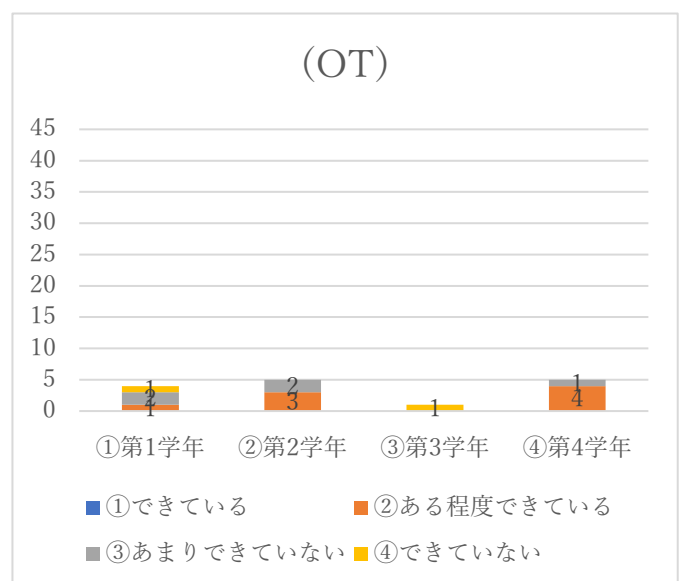
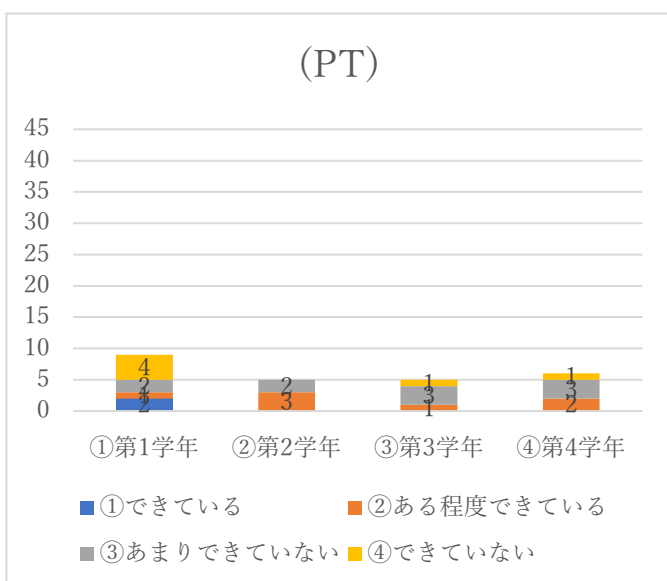
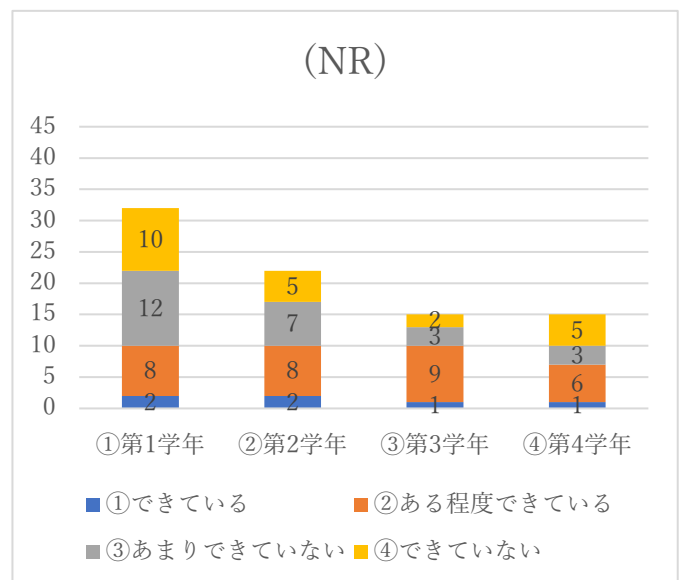
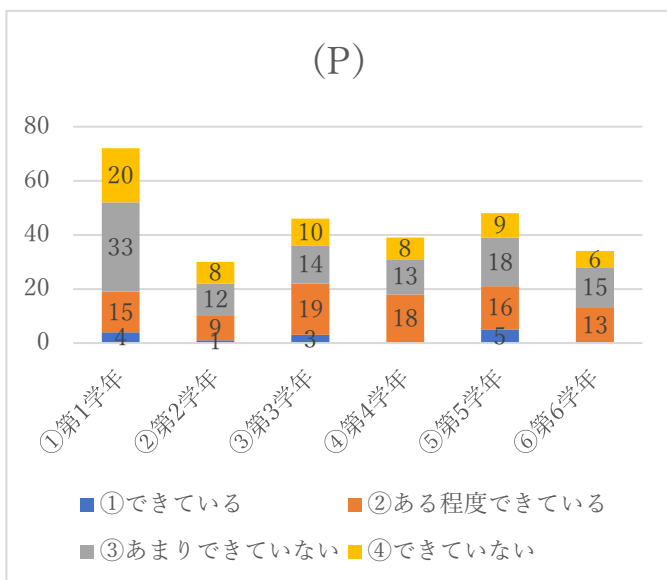
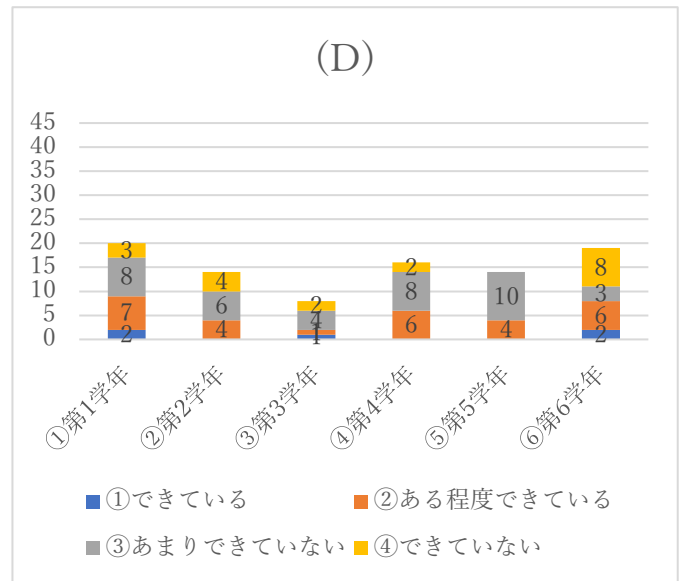
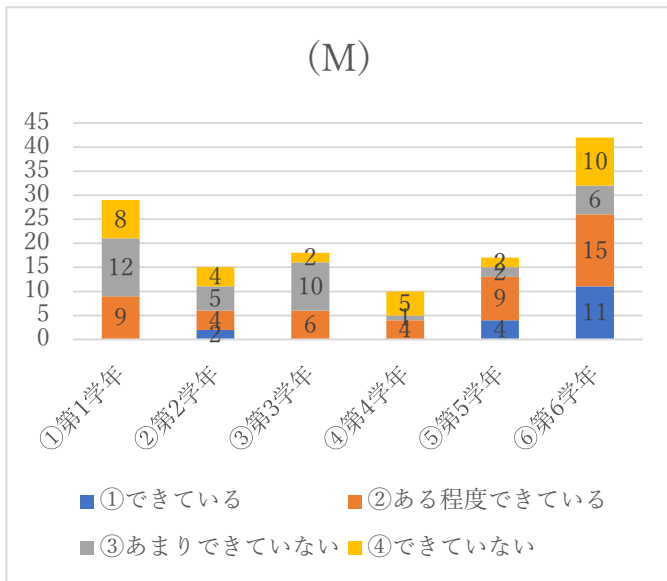
(OT)



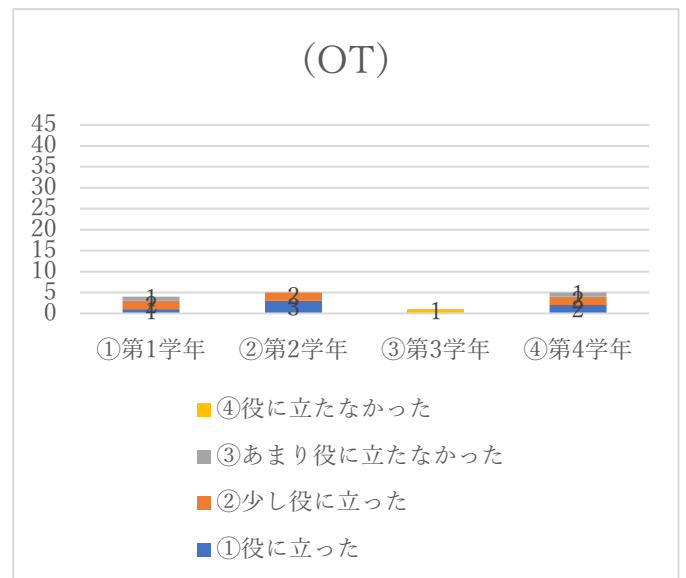
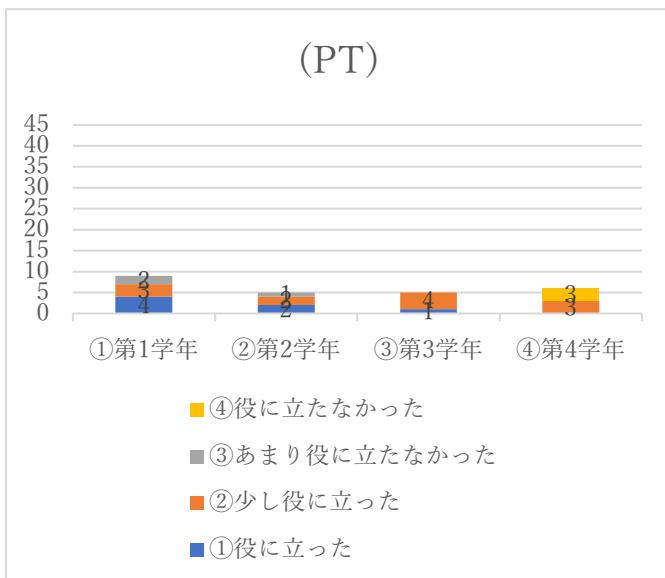
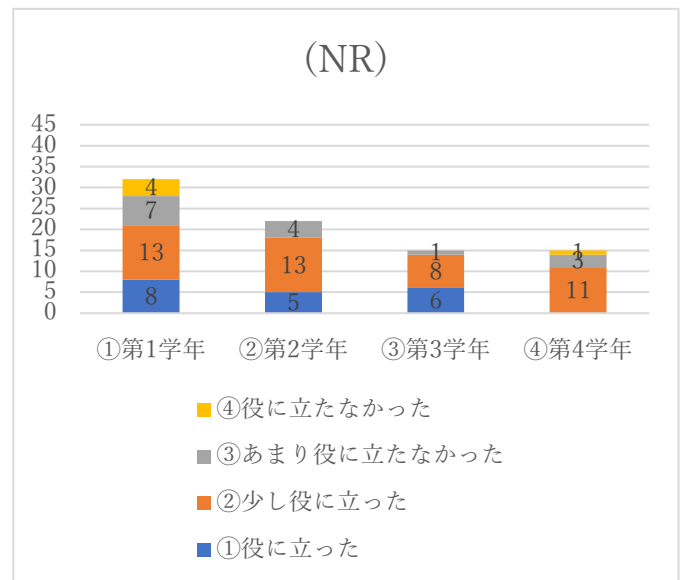
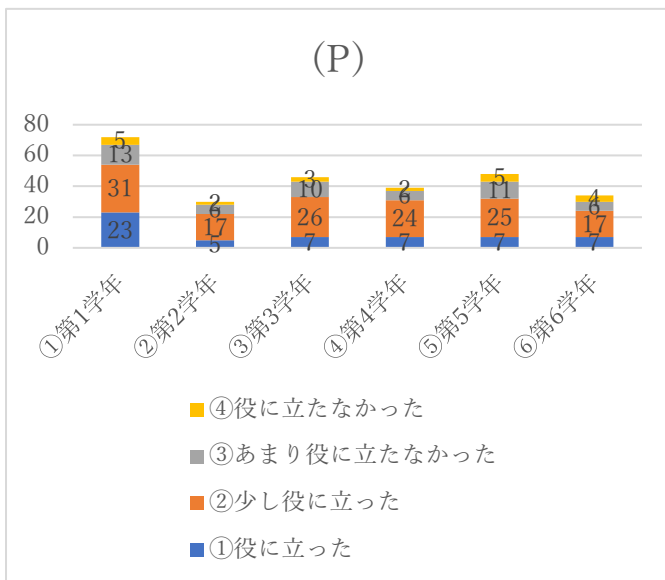
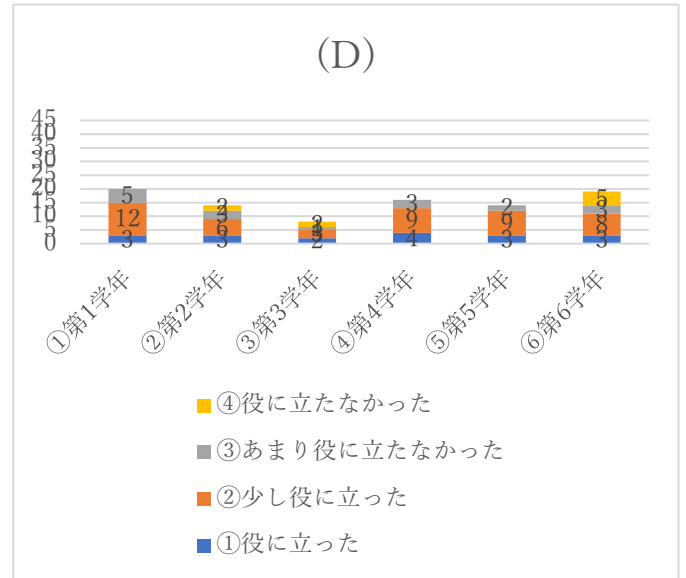
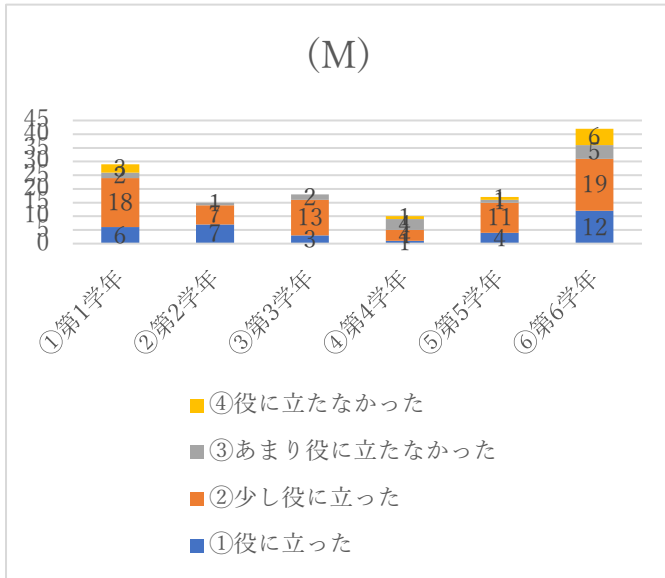
22.授業中に生じた疑問点は、どのように対処していますか？



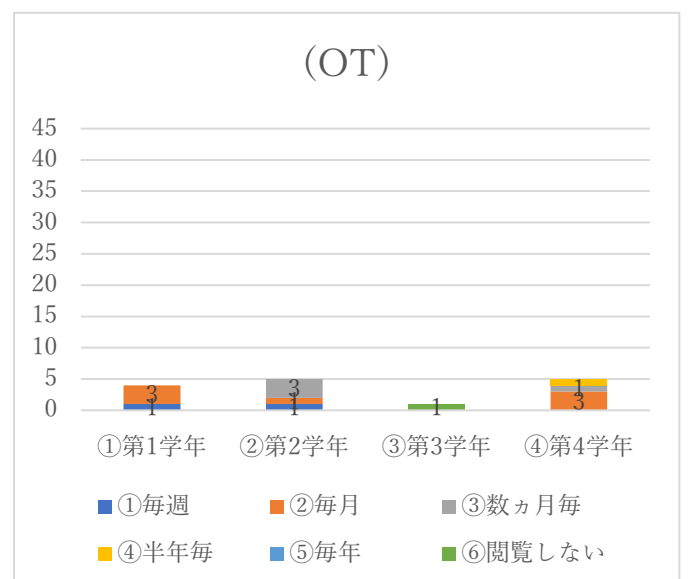
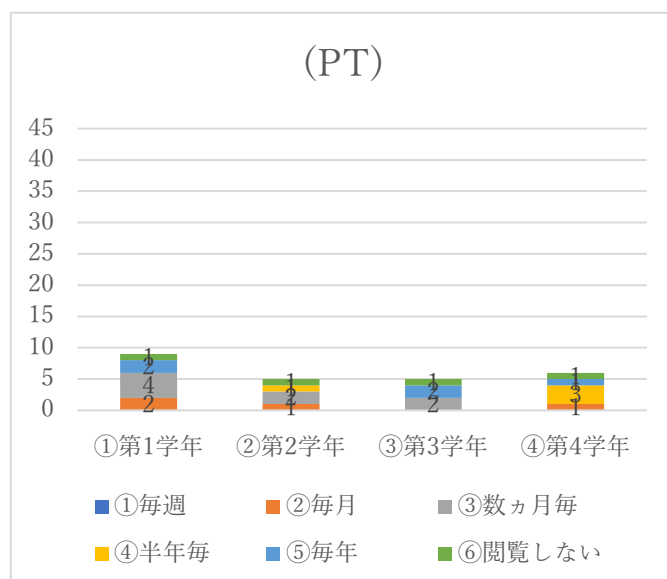
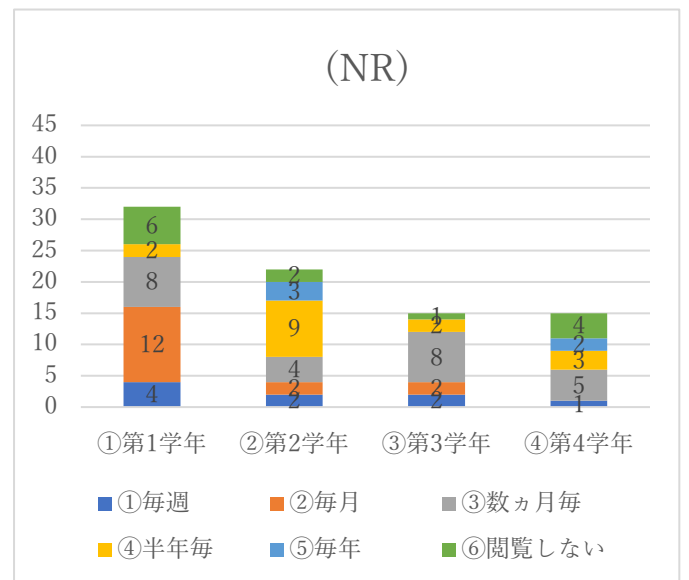
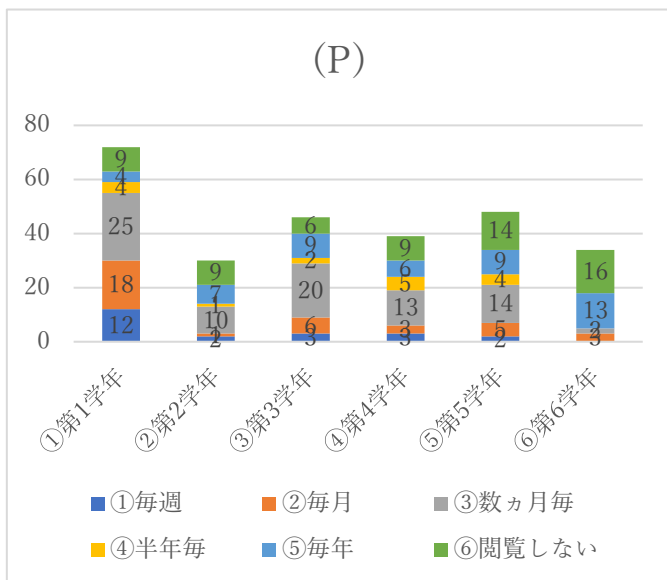
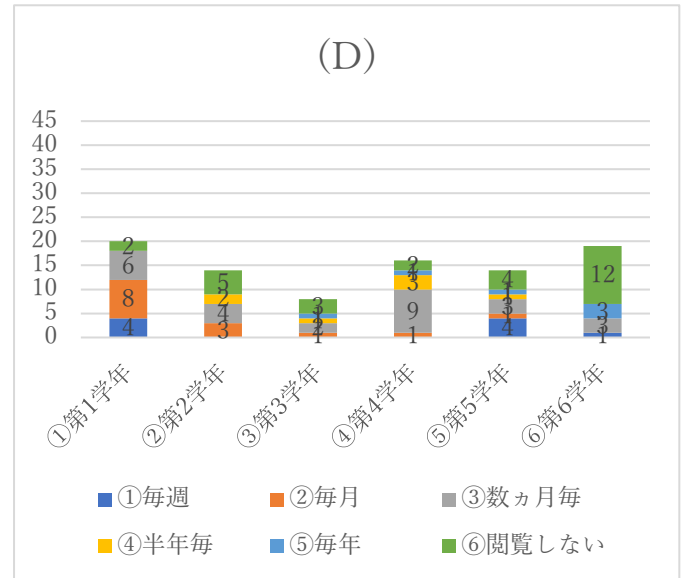
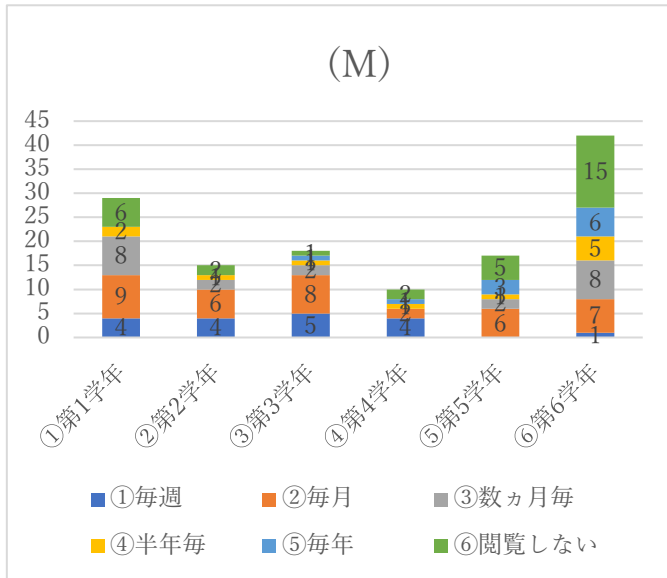
23.ポートフォリオで自らの成長を確認できていますか？



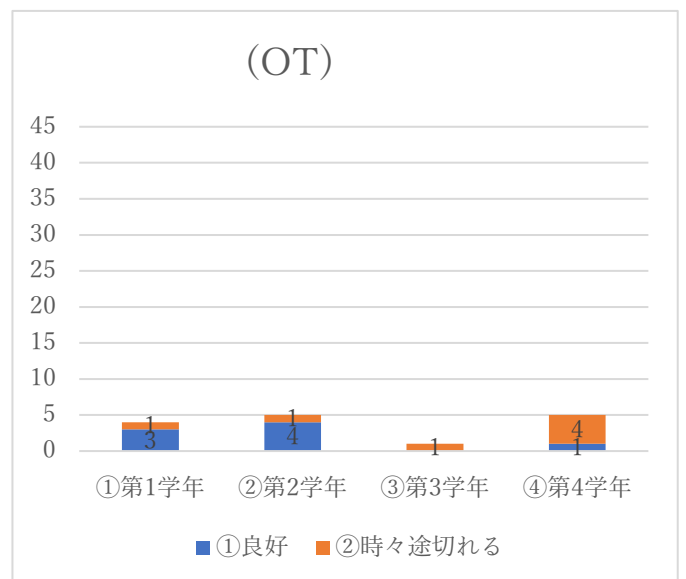
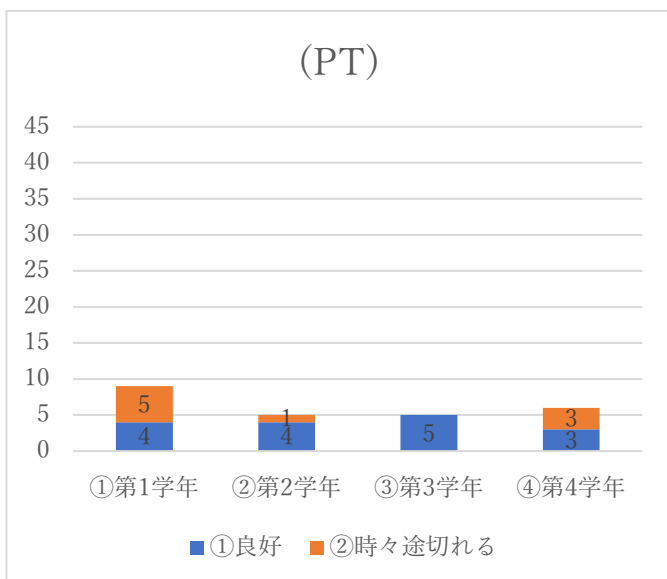
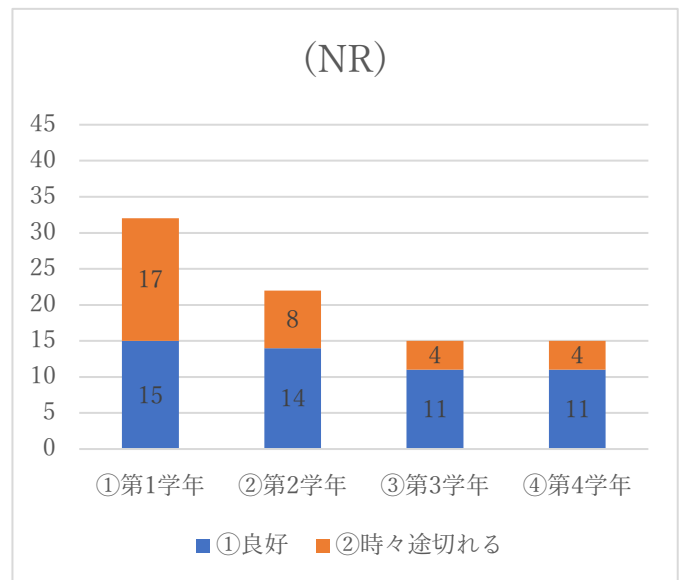
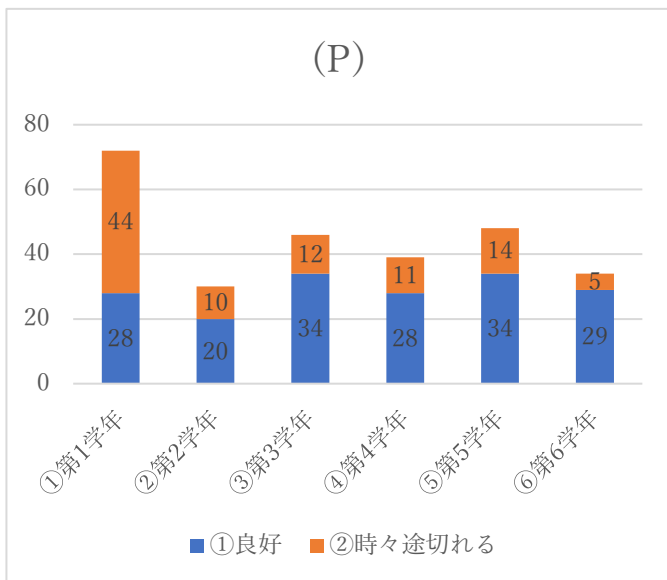
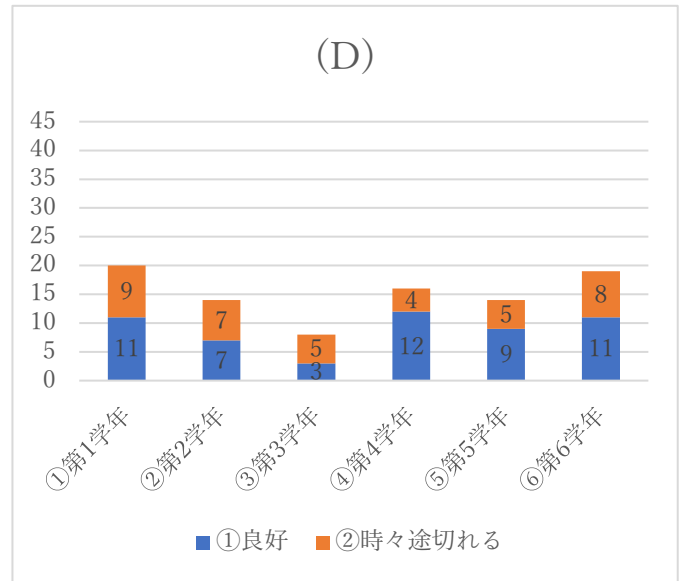
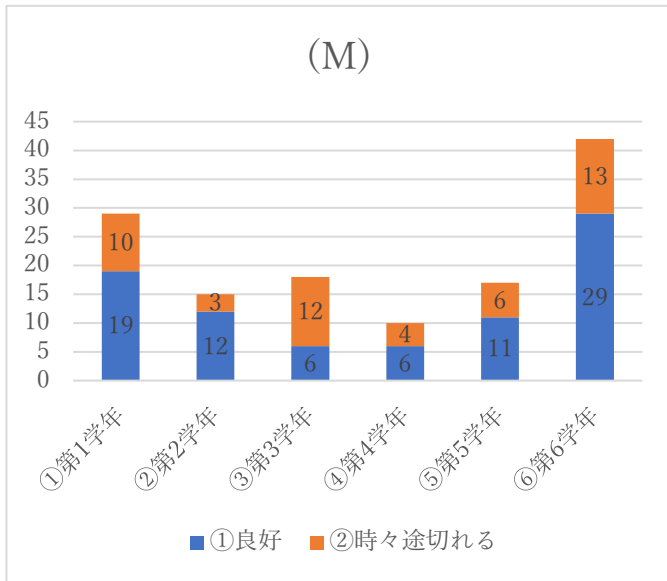
24.ポートフォリオで指導者からのフィードバックは役に立ちましたか？



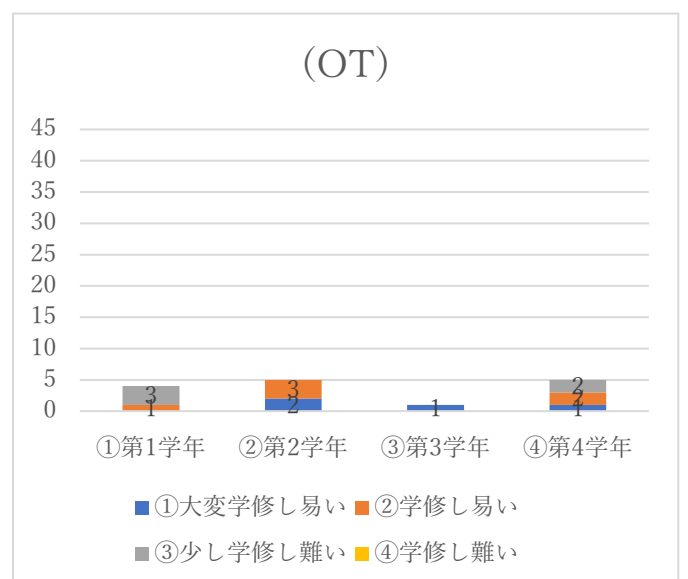
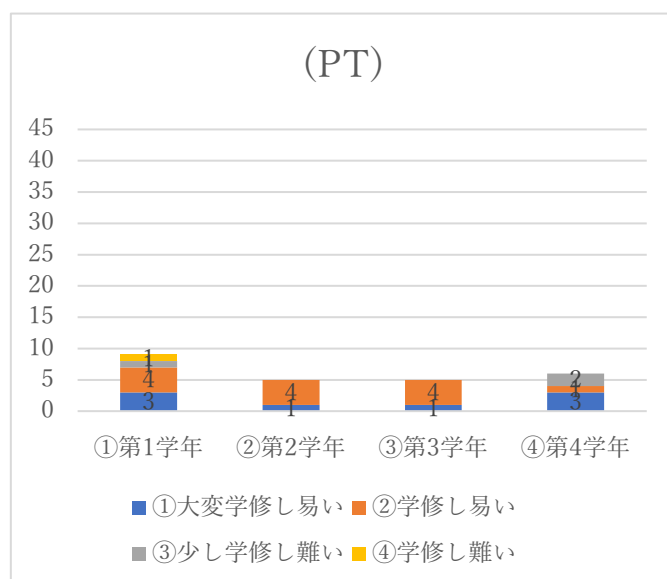
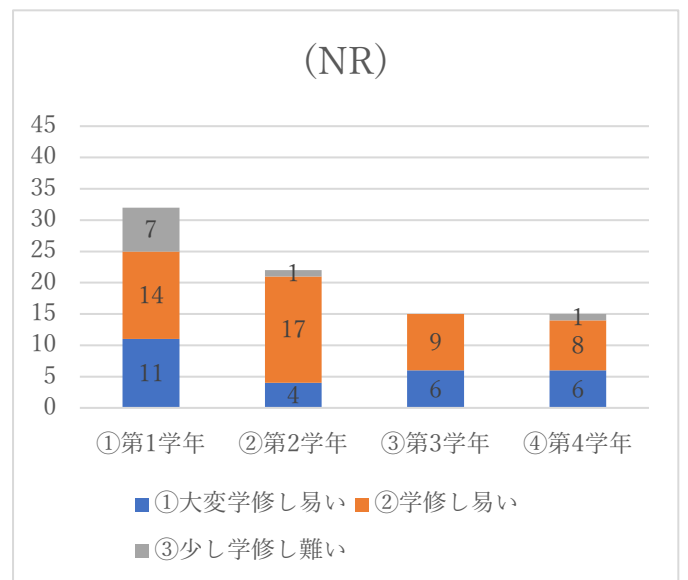
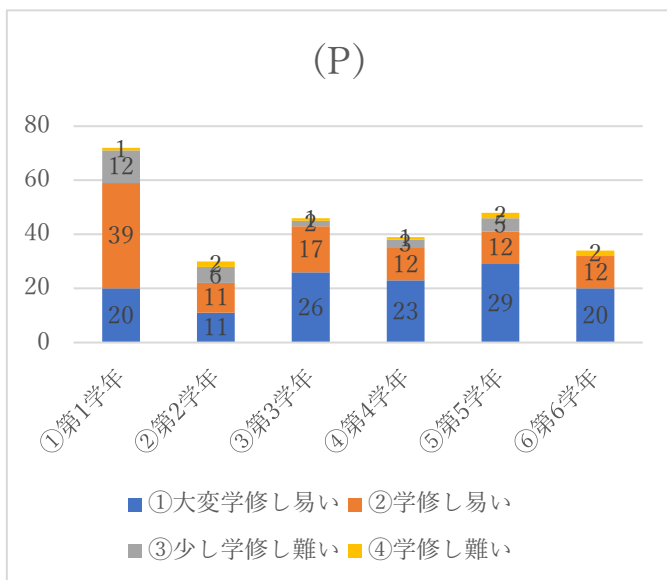
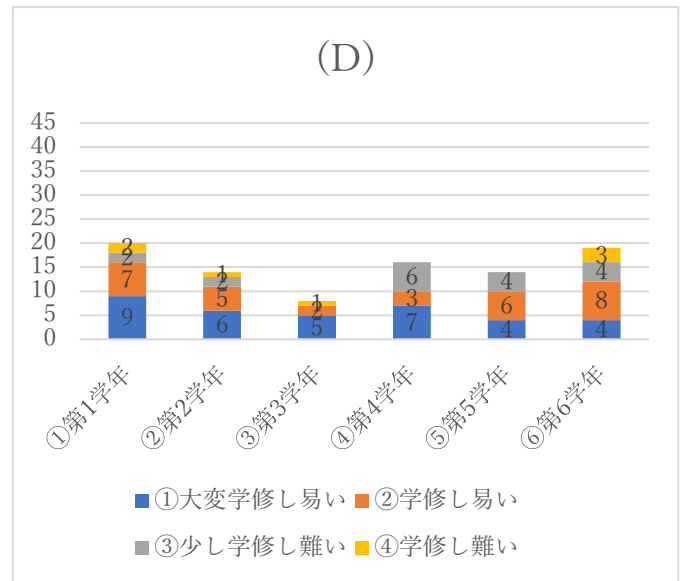
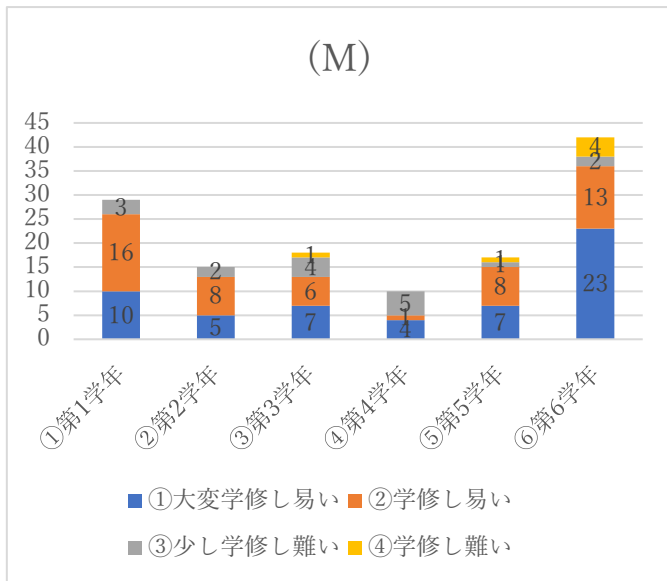
25.ポートフォリオを閲覧する機会はどれくらいありますか？



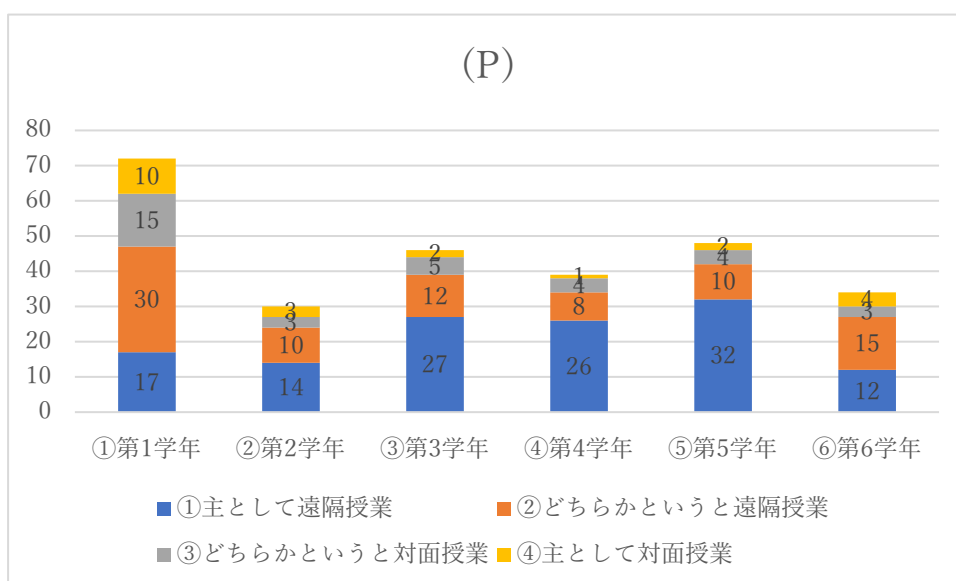
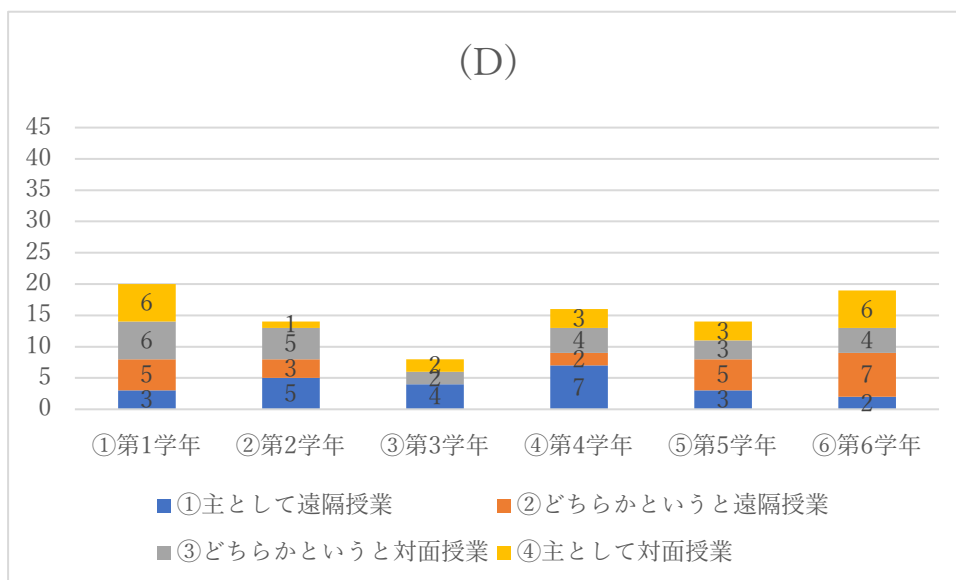
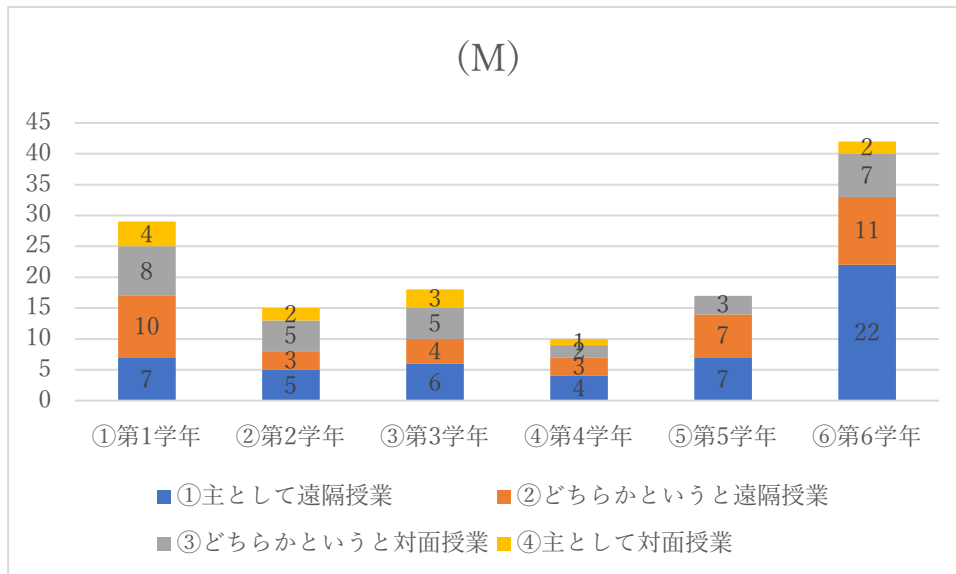
26.通信に関する問題がありましたか？

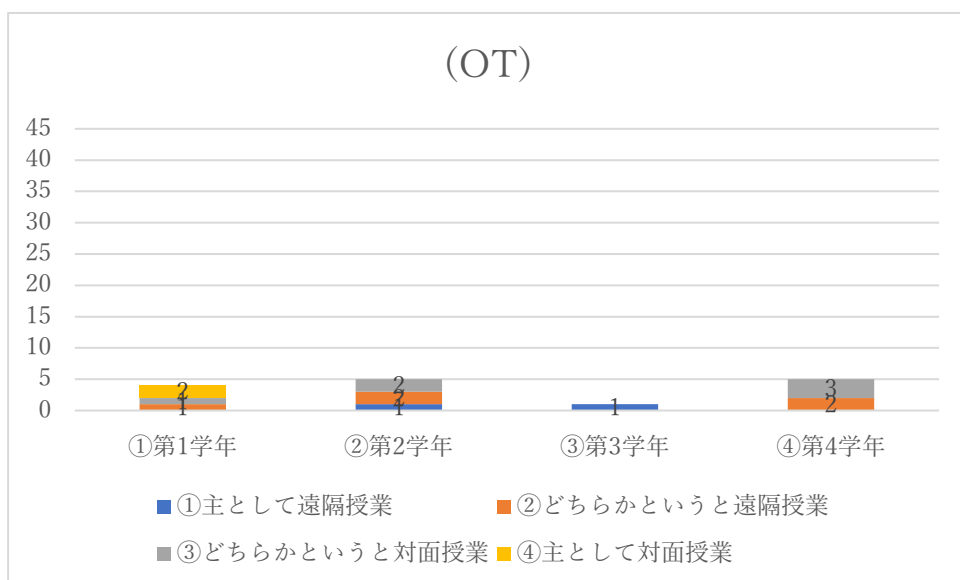
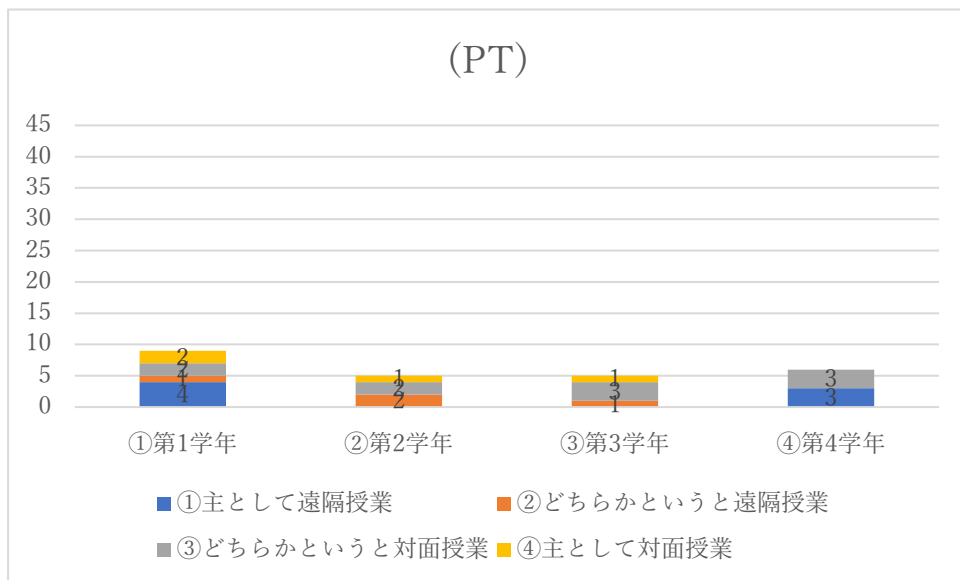
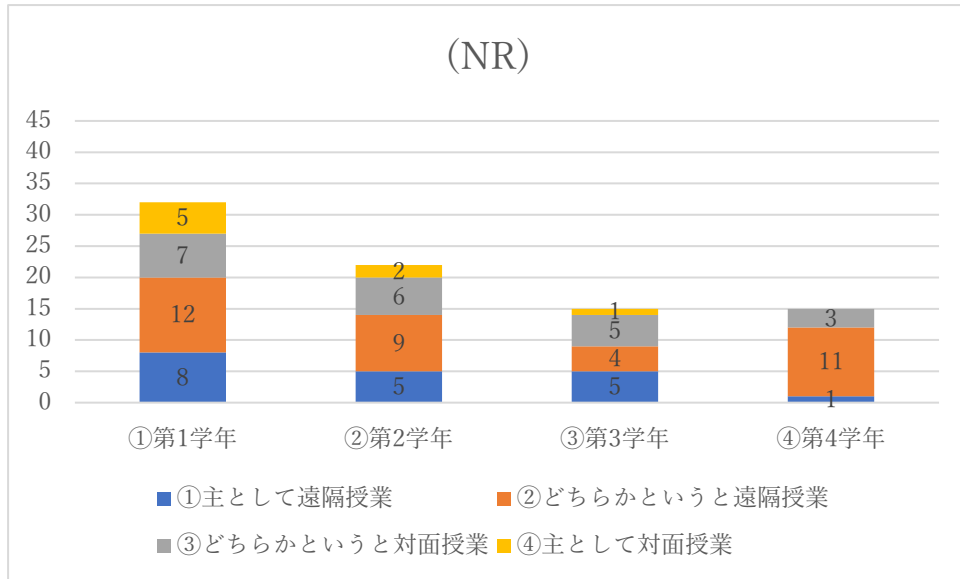


27.遠隔授業は学修し易かったですか？

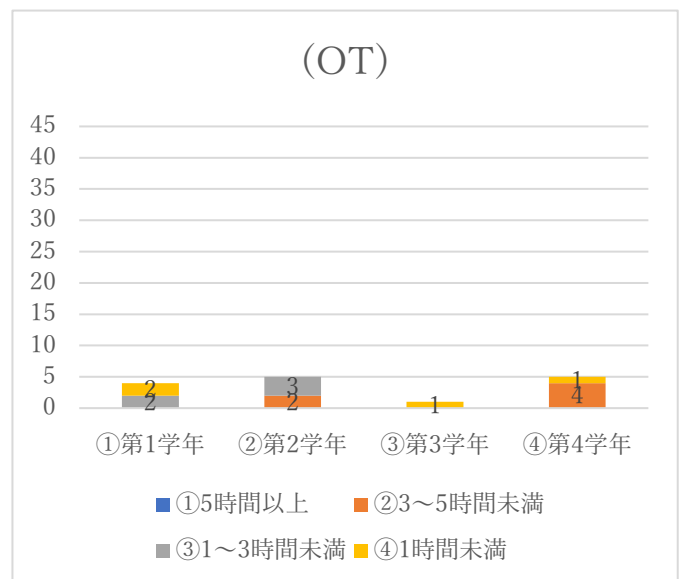
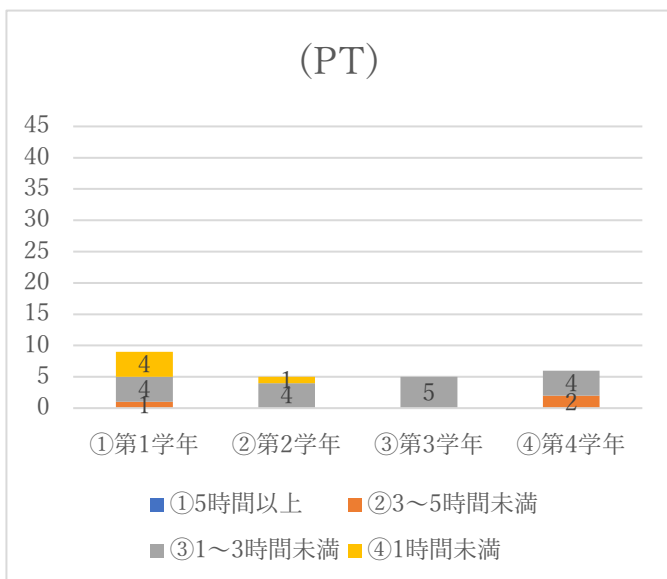
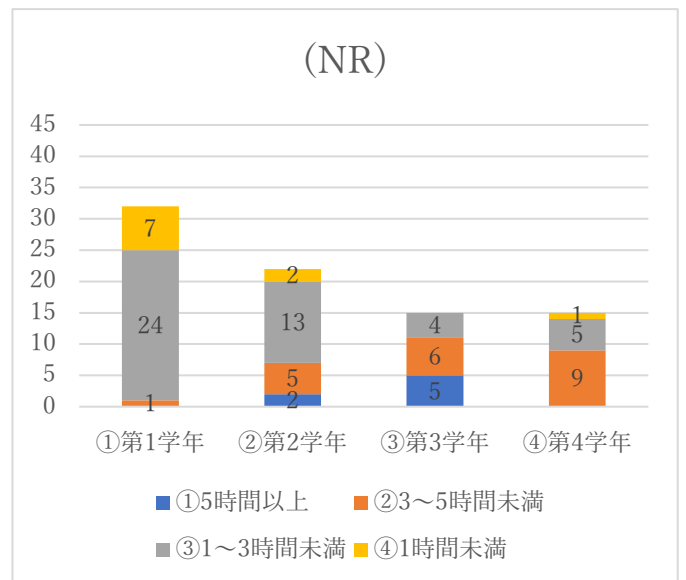
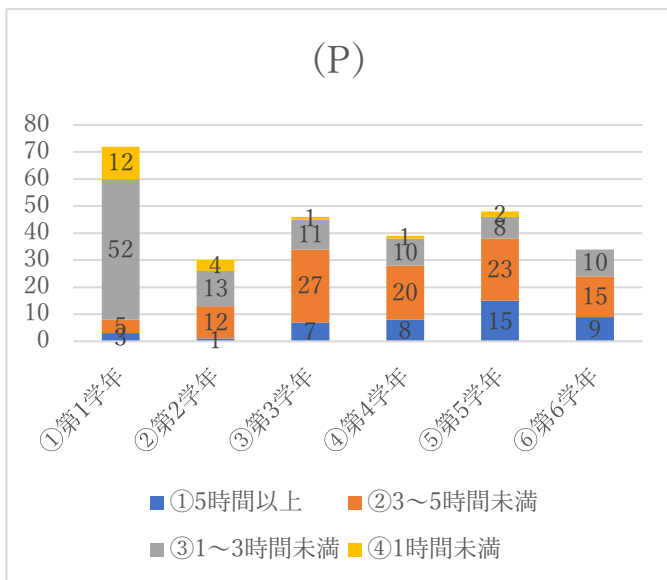
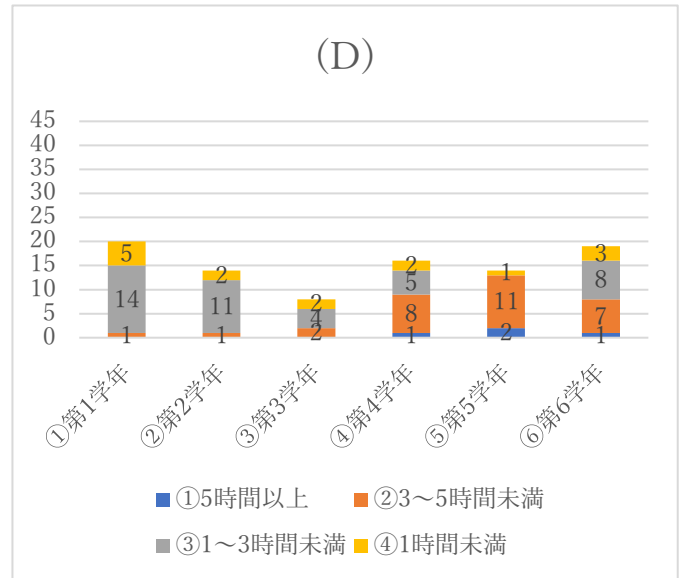
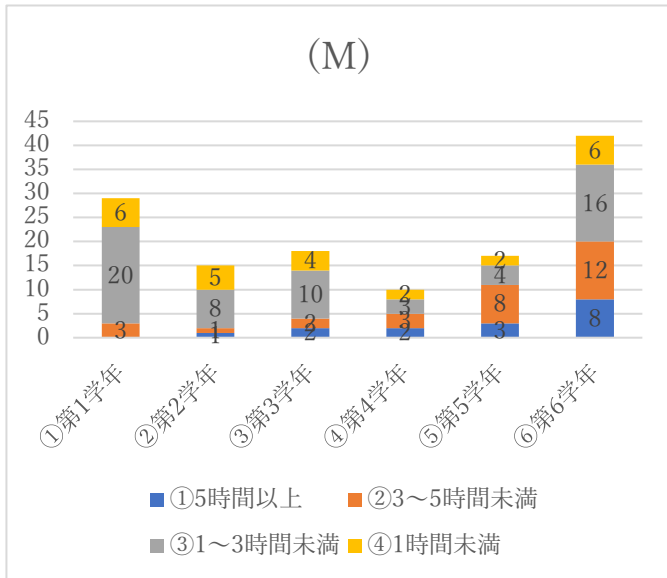


28.遠隔授業と通常の対面授業のどちらが学修し易かったですか？

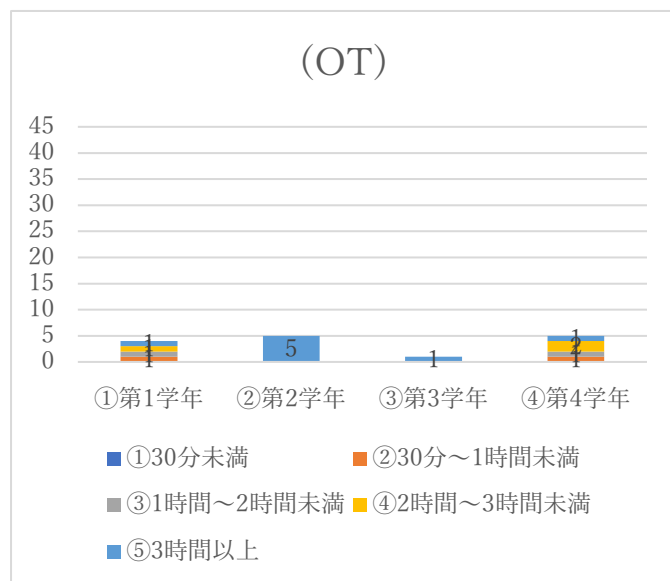
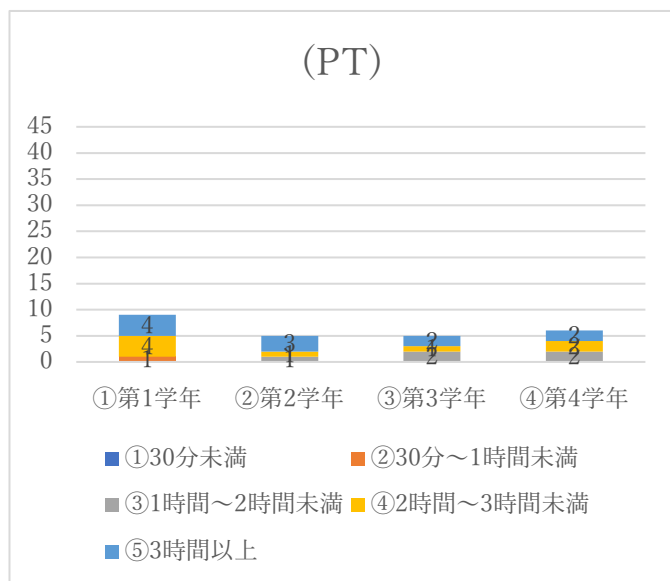
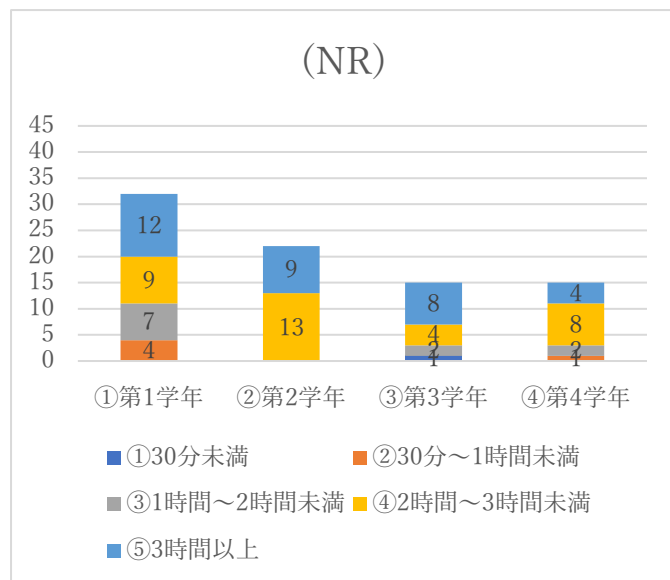
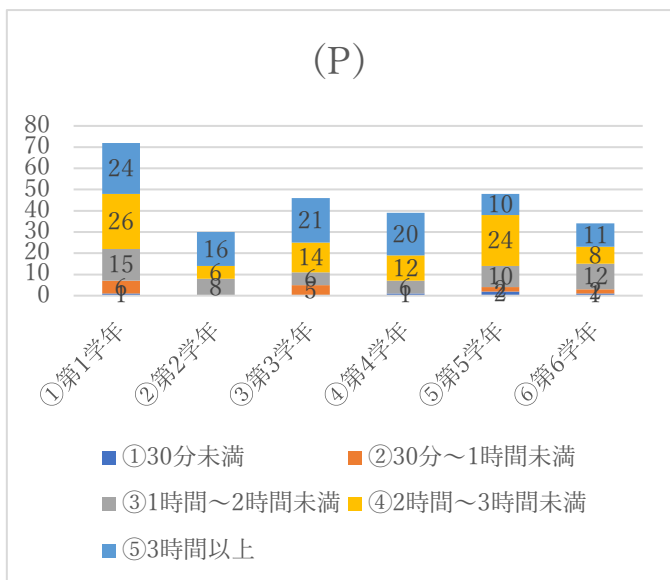
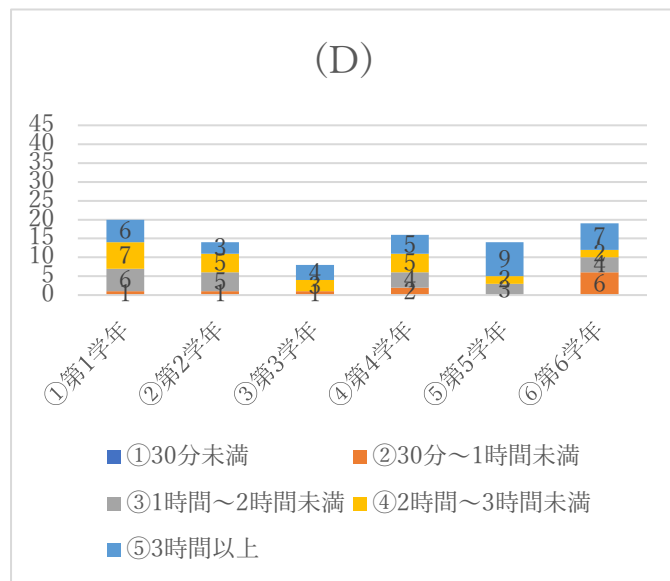
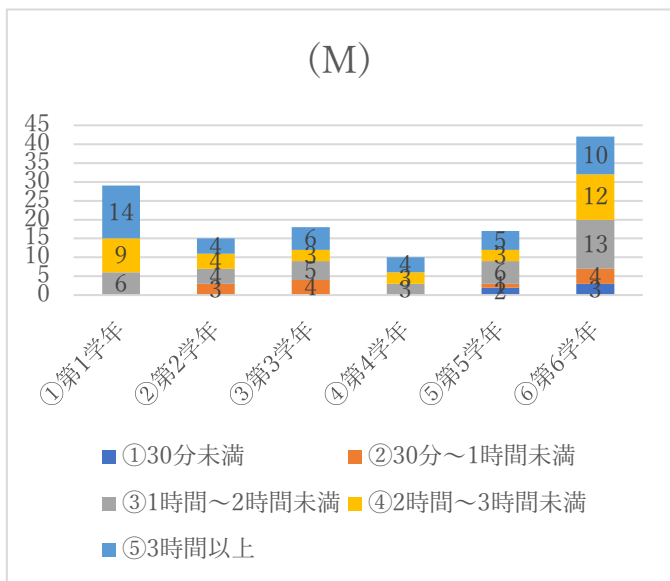




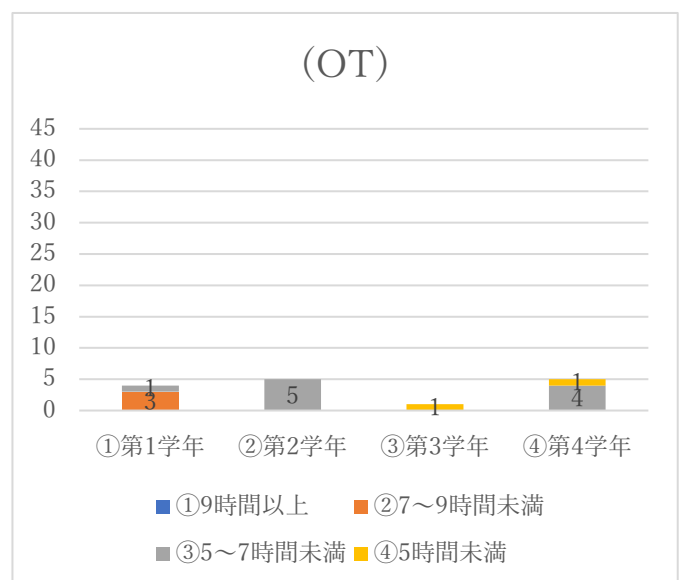
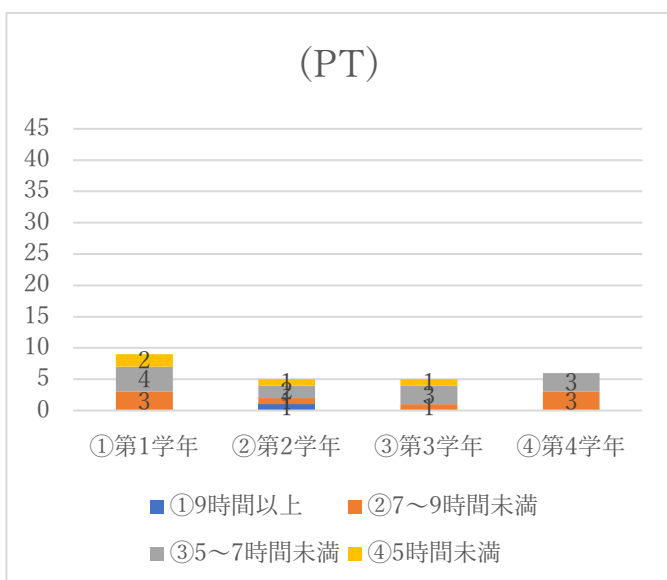
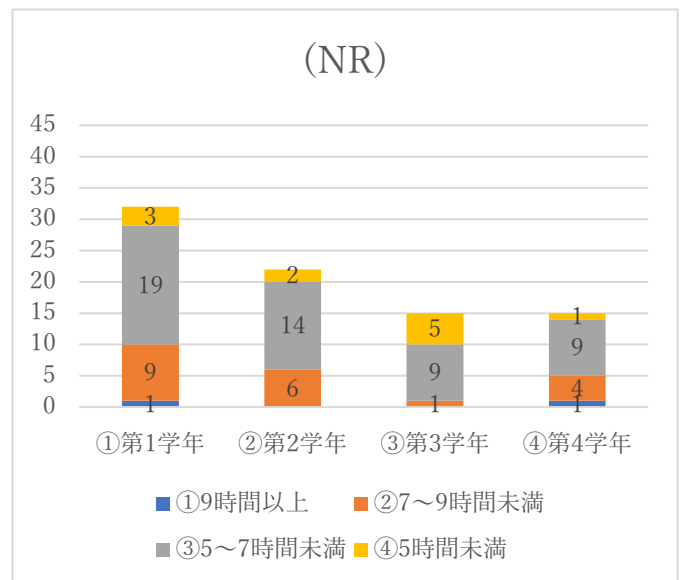
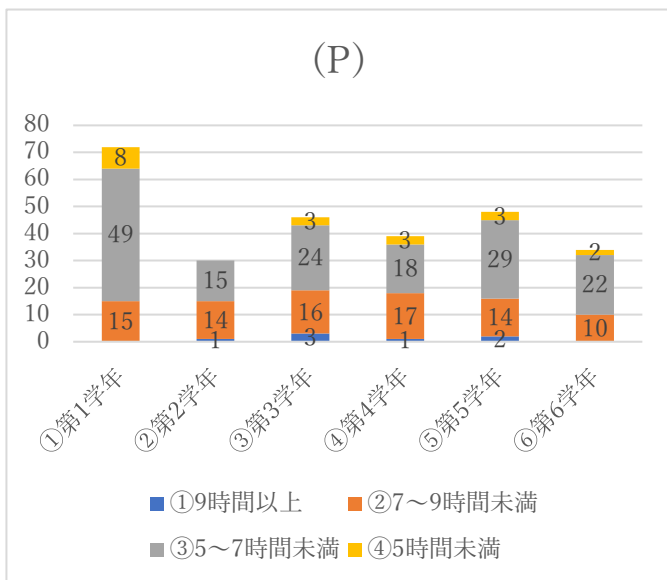
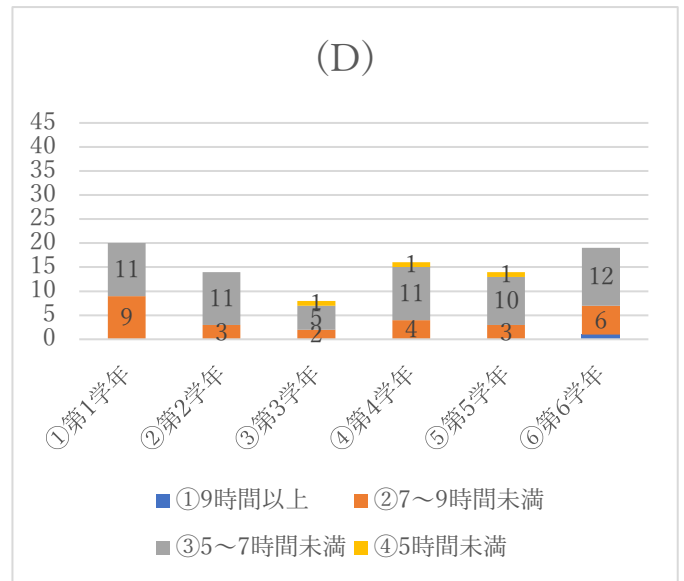
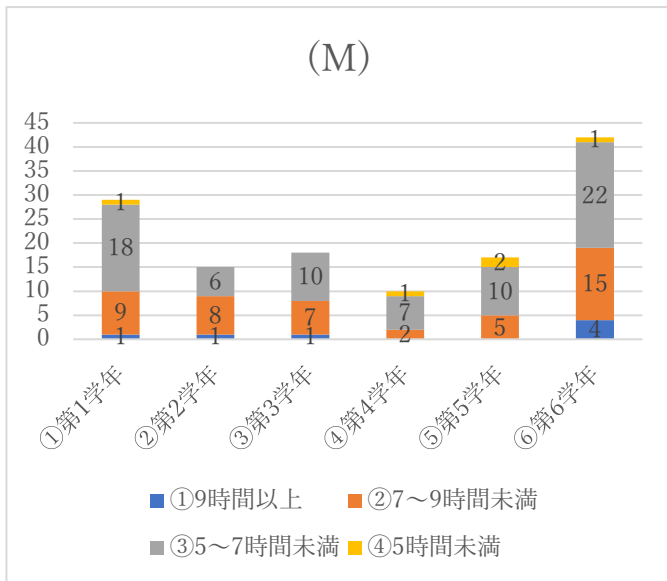
29.遠隔授業の視聴時間は1日当たりどのくらい時間を要しましたか？（費やしましたか？）



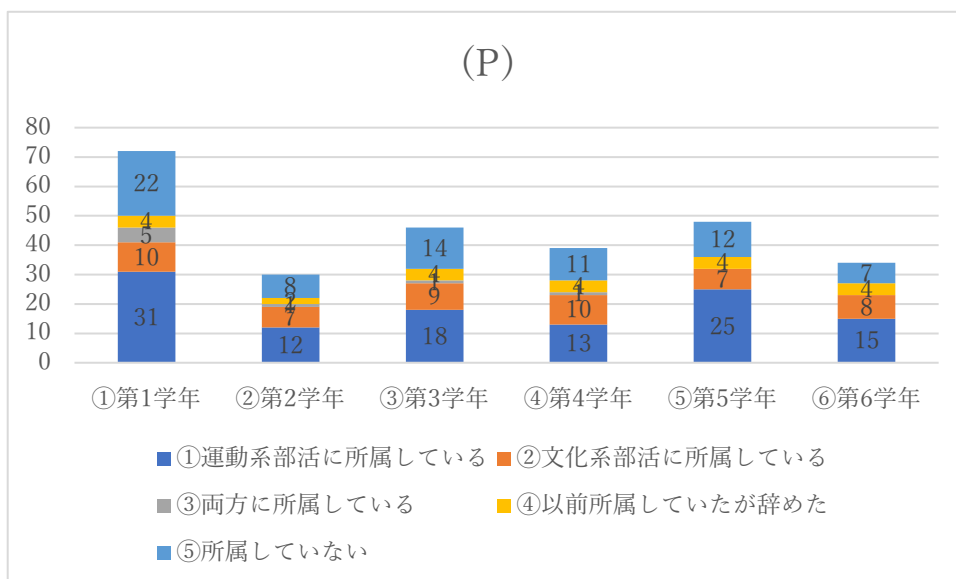
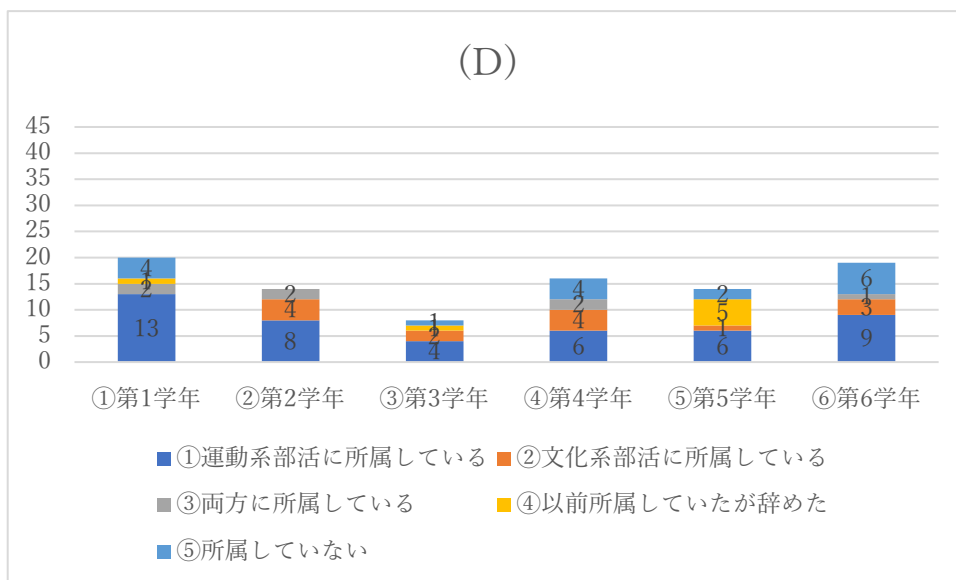
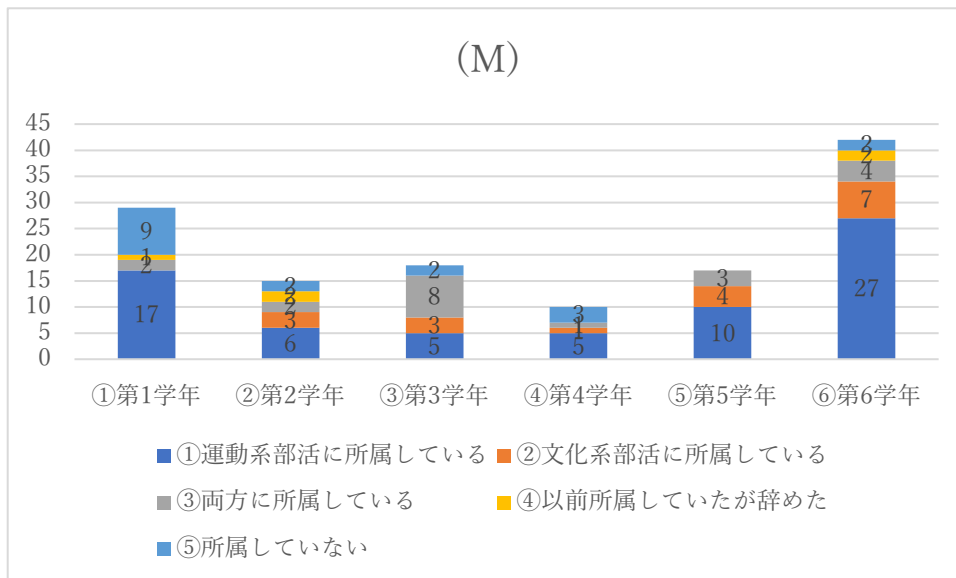
30.LINE、YouTube、オンラインゲーム等、インターネットに接続し提供されているサービスを（平均的な一日当たり）どれくらい利用しますか？



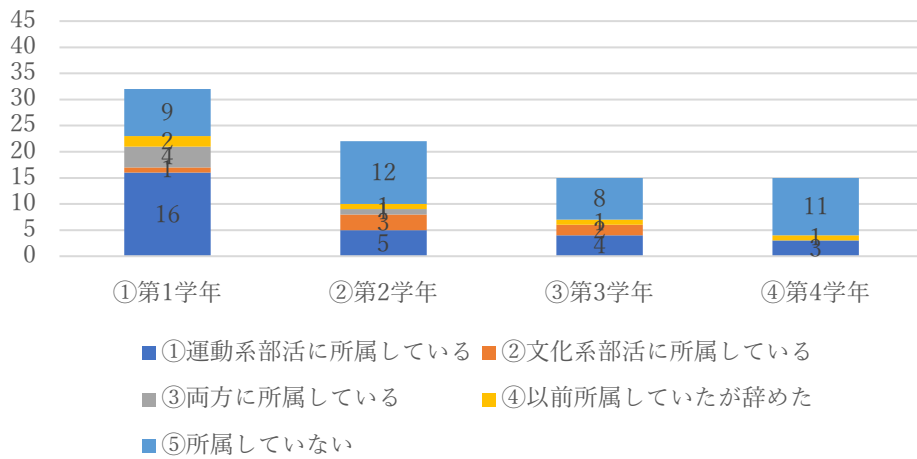
31.睡眠時間は1日あたりどれくらいですか？



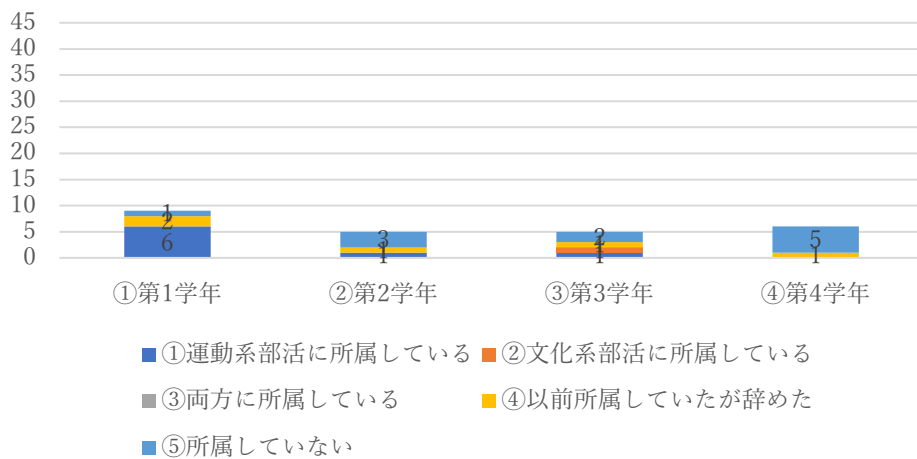
32.部活に所属していますか？



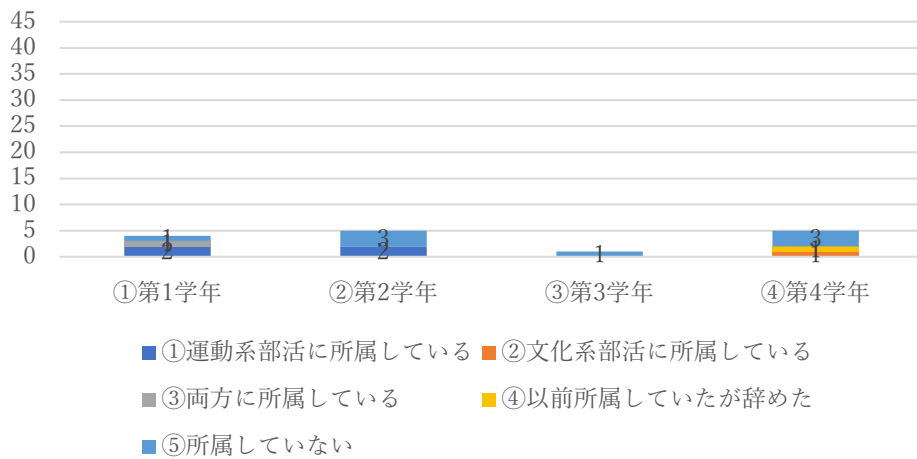
(NR)



(PT)



(OT)



33.アルバイトはどのくらいしていますか？（長期休暇以外で多い時期）

