

2024年度学修アンケート回答状況

4月1日時点

回答期間：2024年12月5日～2025年2月28日

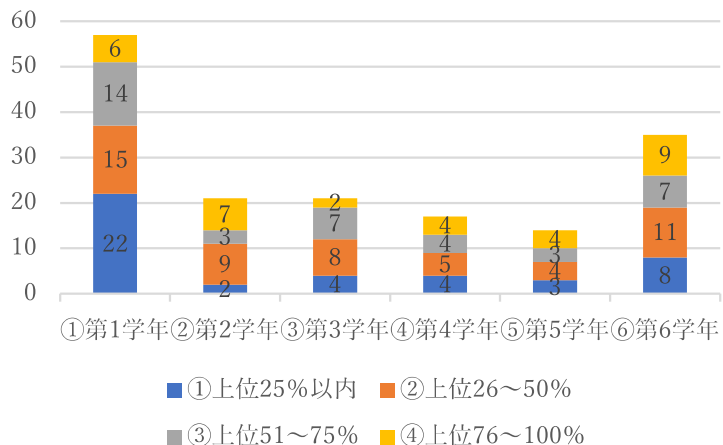
対象：全学部生

実施方法：Googleフォーム

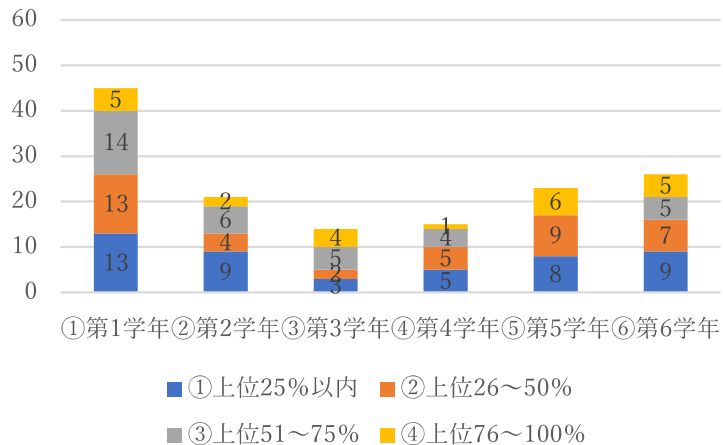
	①第1学年			②第2学年			③第3学年			④第4学年			⑤第5学年			⑥第6学年			総計		
	現員	回答数	回答率	現員	回答数	回答率	現員	回答数	回答率	現員	回答数	回答率	現員	回答数	回答率	現員	回答数	回答率	現員	回答数	回答率
医学部	132	57	43%	138	21	15%	133	21	16%	115	17	15%	124	14	11%	107	35	33%	749	165	22%
歯学部	101	45	45%	105	21	20%	104	14	13%	91	15	16%	92	23	25%	97	26	27%	590	144	24%
薬学部	217	92	42%	244	77	32%	195	42	22%	183	46	25%	167	46	28%	184	45	24%	1,190	348	29%
看護学科	101	47	47%	102	23	23%	115	23	20%	110	23	21%							428	116	27%
理学療法学科・リハビリ専攻	42	22	52%	36	9	25%	32	5	16%	35	7	20%							145	43	30%
作業療法学科・リハビリ専攻	14	6	43%	11	2	18%	16	4	25%	16	7	44%							57	19	33%
総計	607	269	44%	636	153	24%	595	109	18%	550	115	21%	383	83	22%	388	106	27%	3,159	835	26%

4.成績は学年の中で、どのくらいだと思いますか？

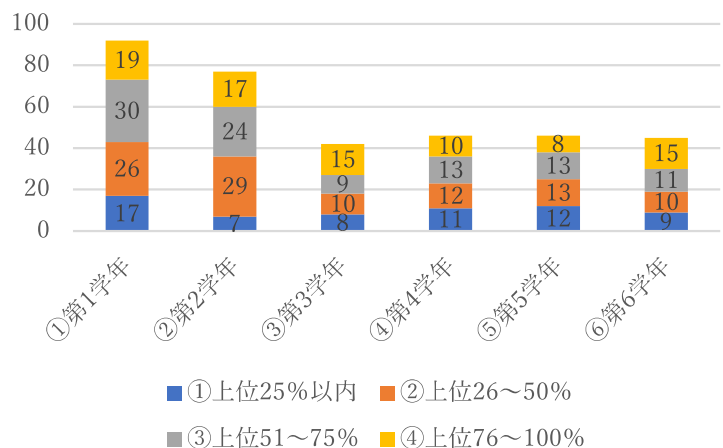
(M)



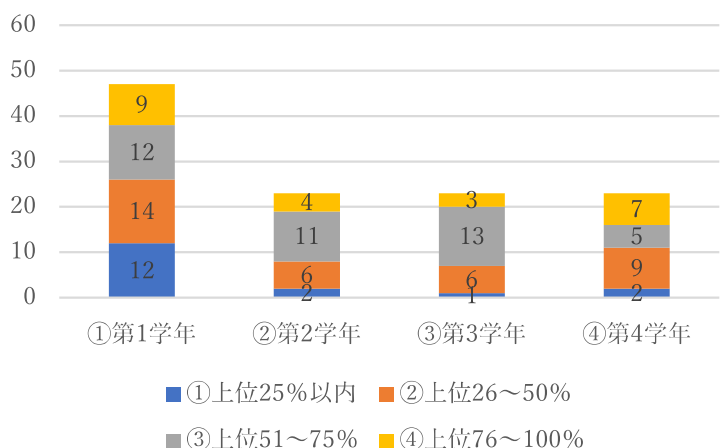
(D)



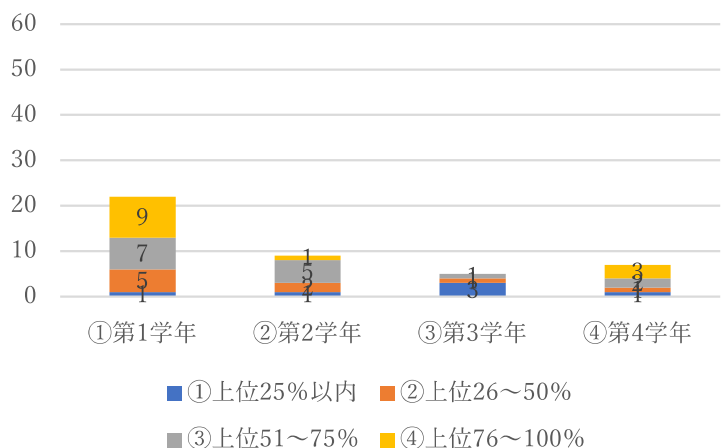
(P)



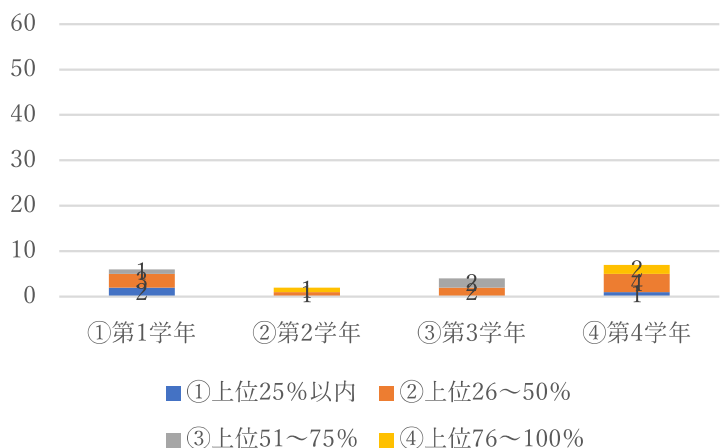
(NS)



(PT)

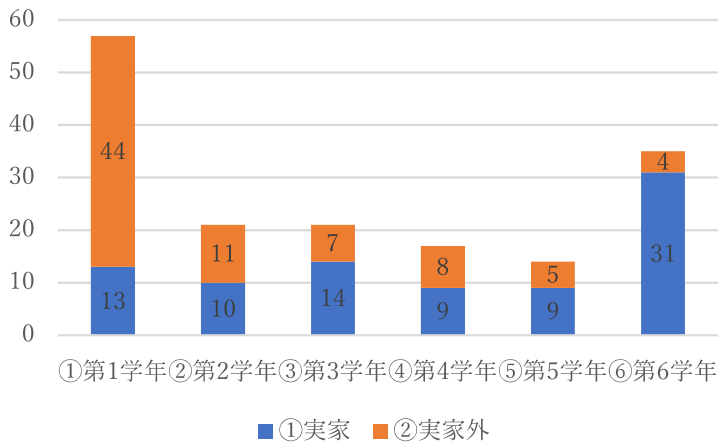


(OT)

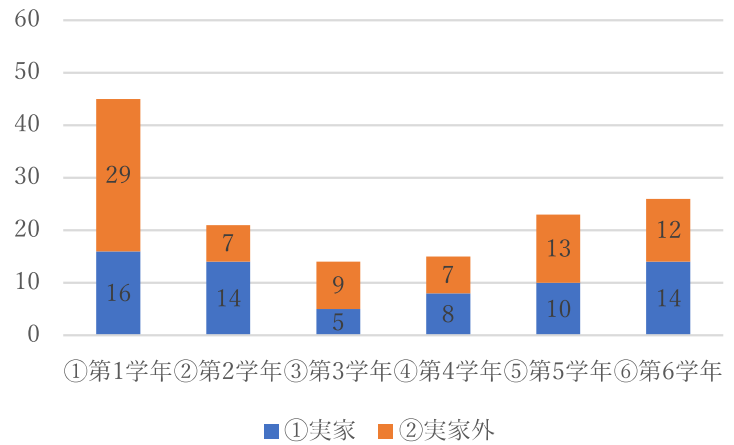


5. 実家通学ですか？

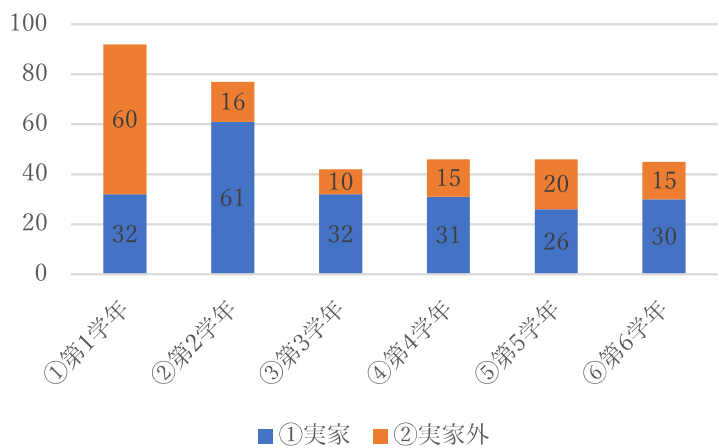
(M)



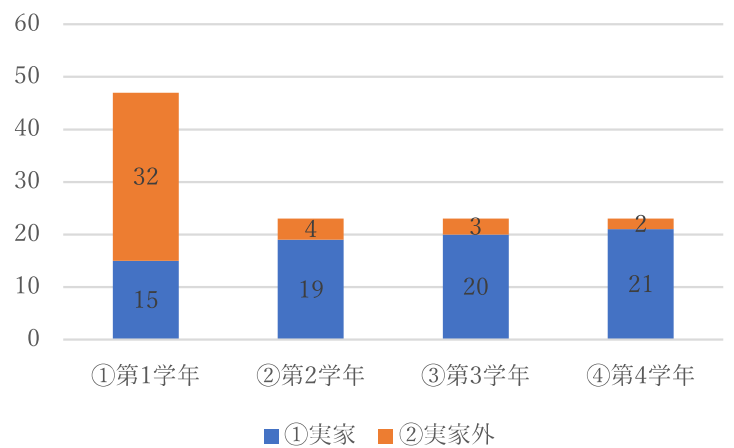
(D)



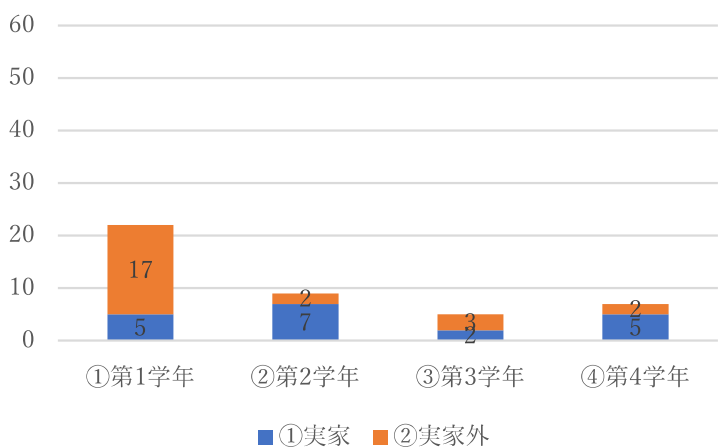
(P)



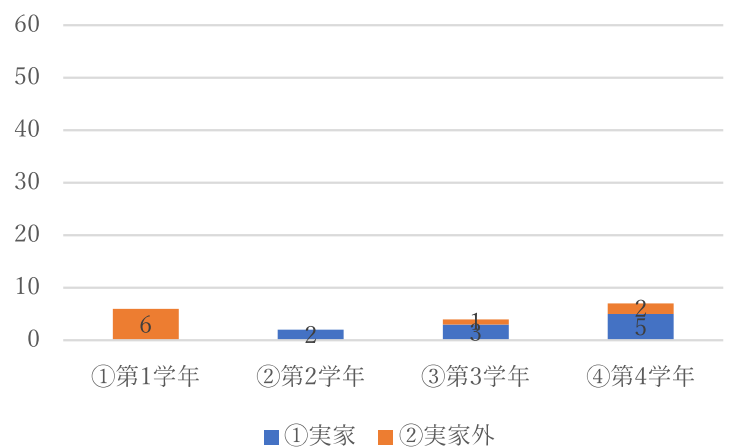
(NS)



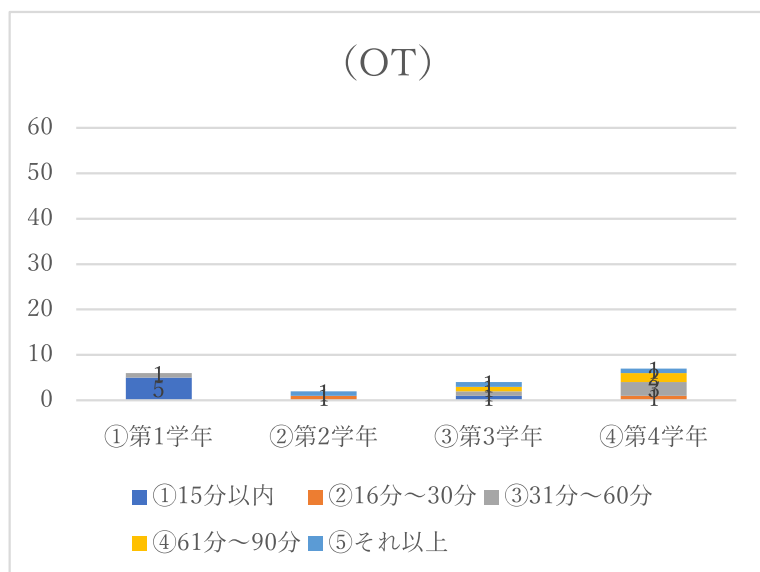
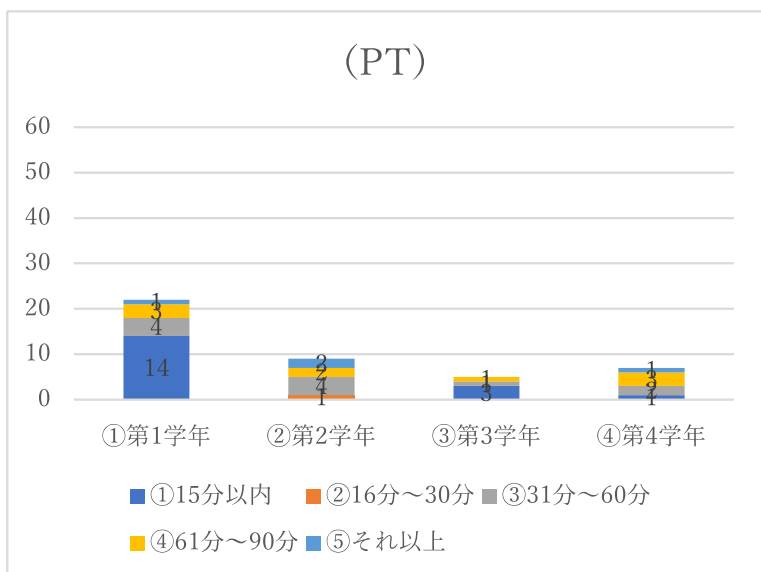
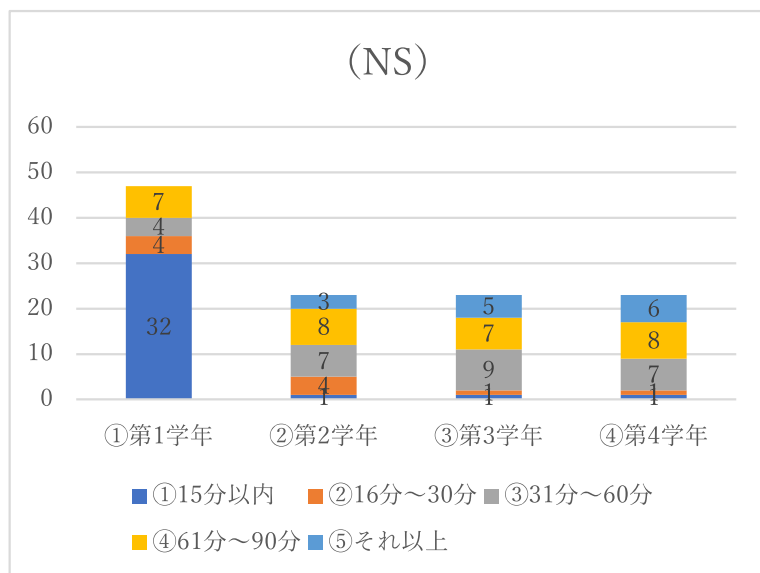
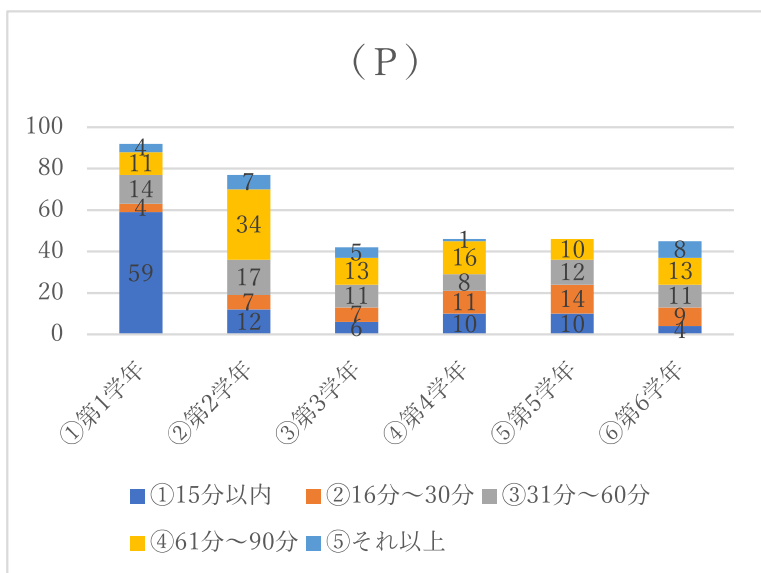
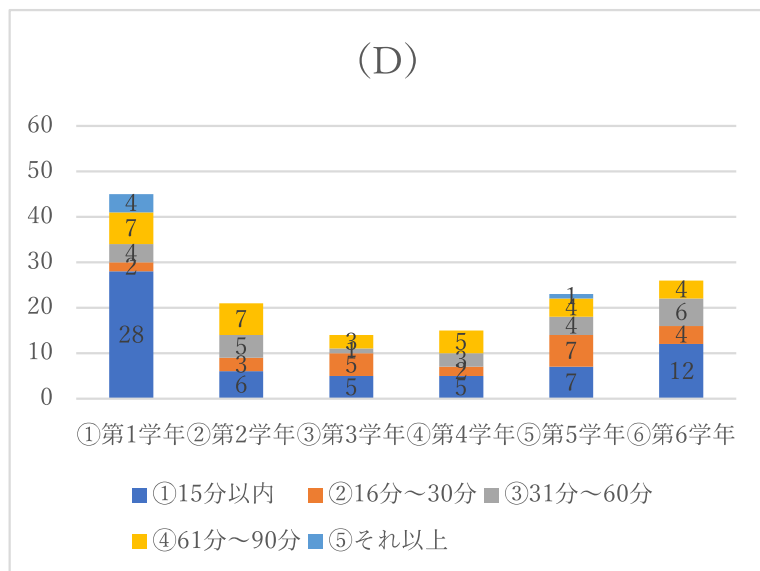
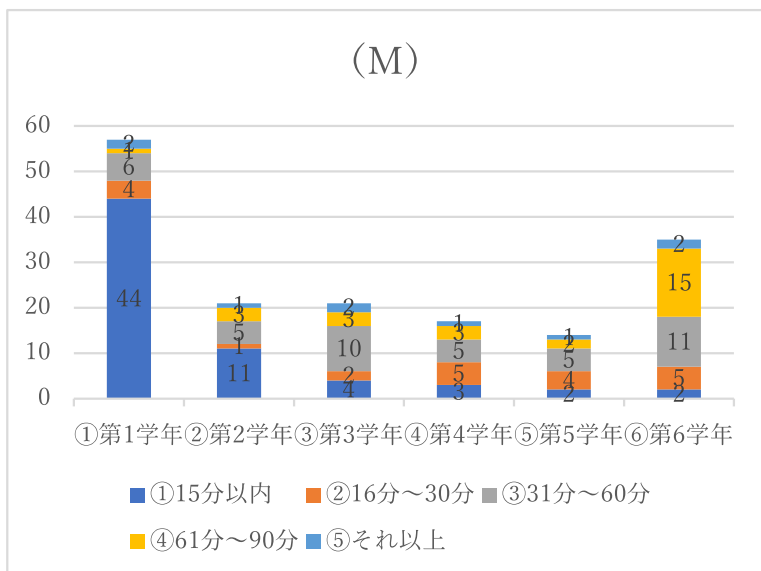
(PT)



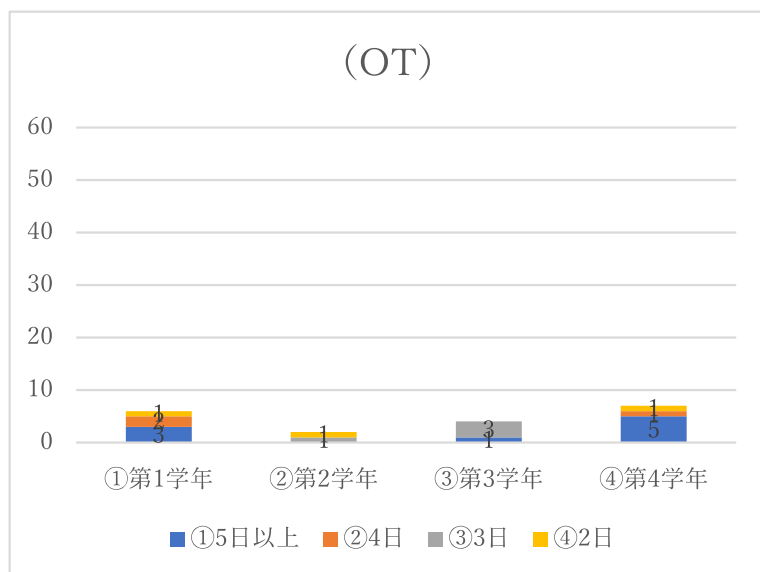
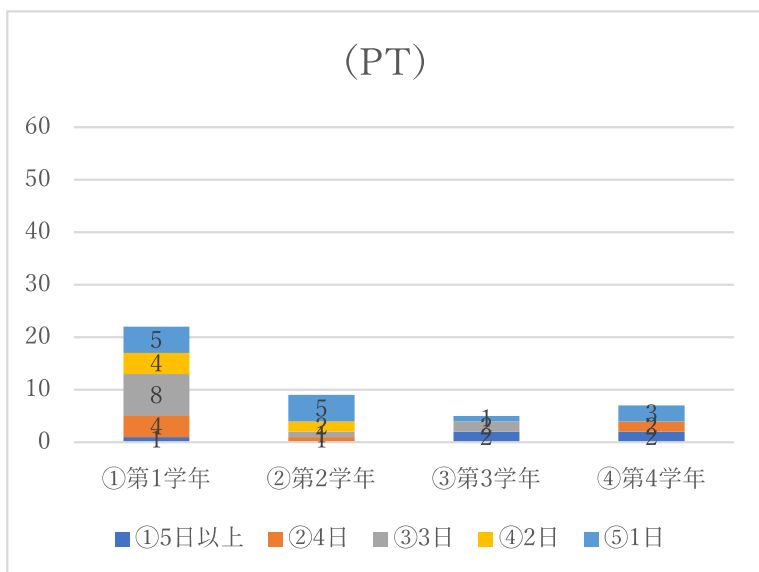
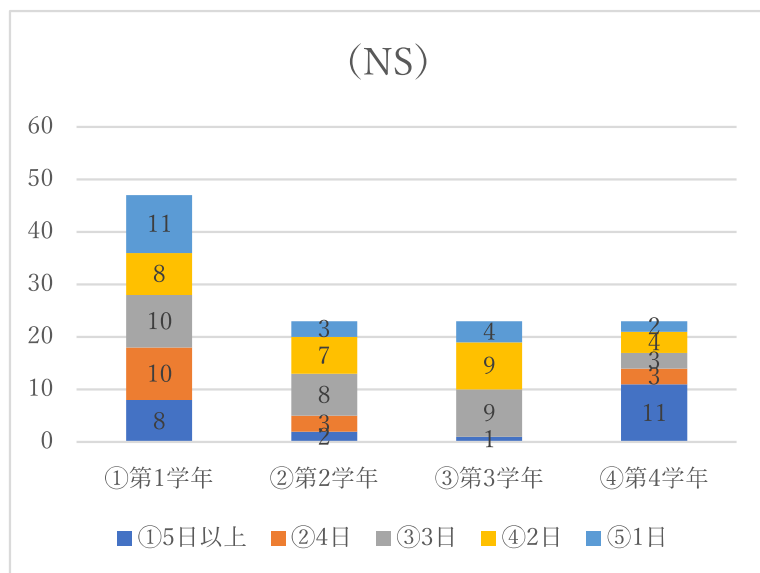
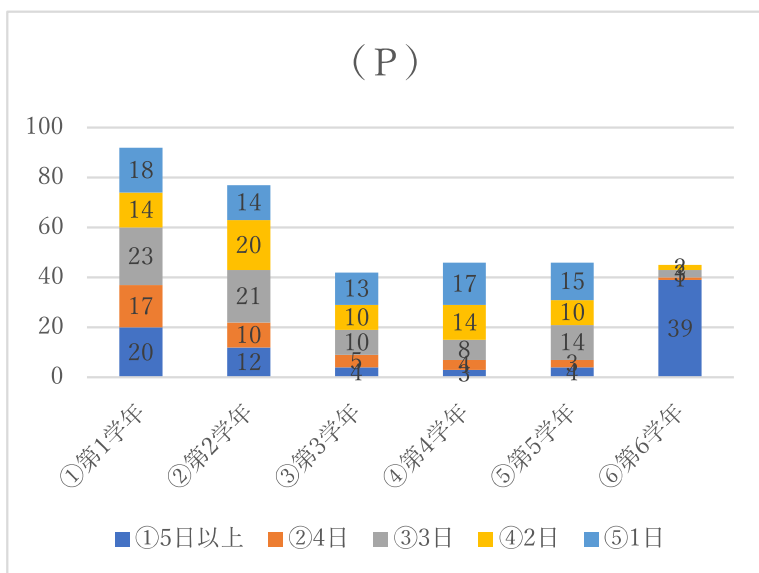
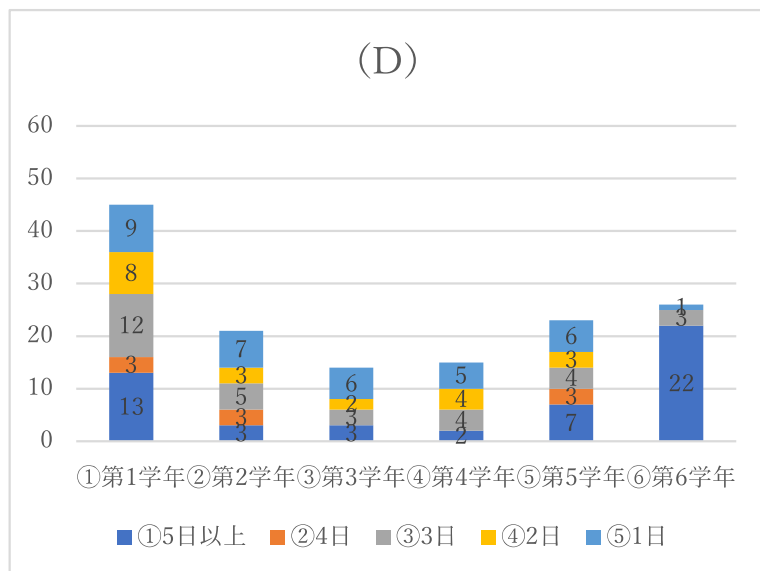
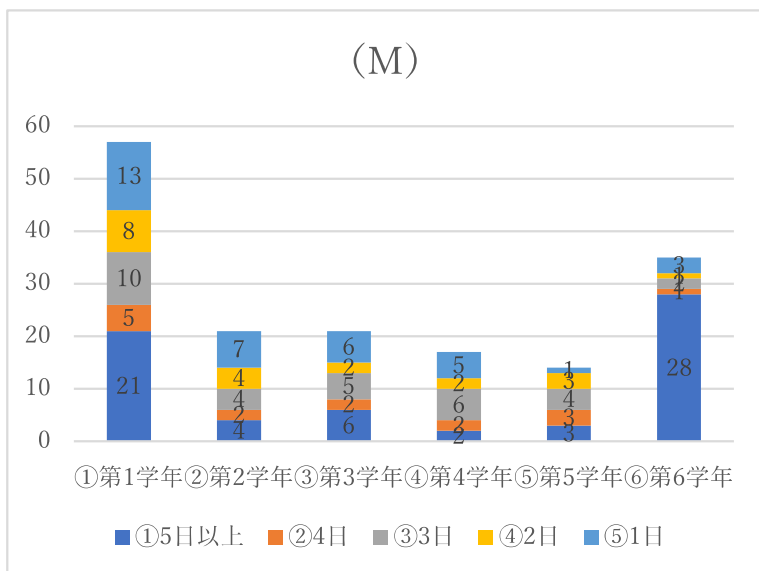
(OT)



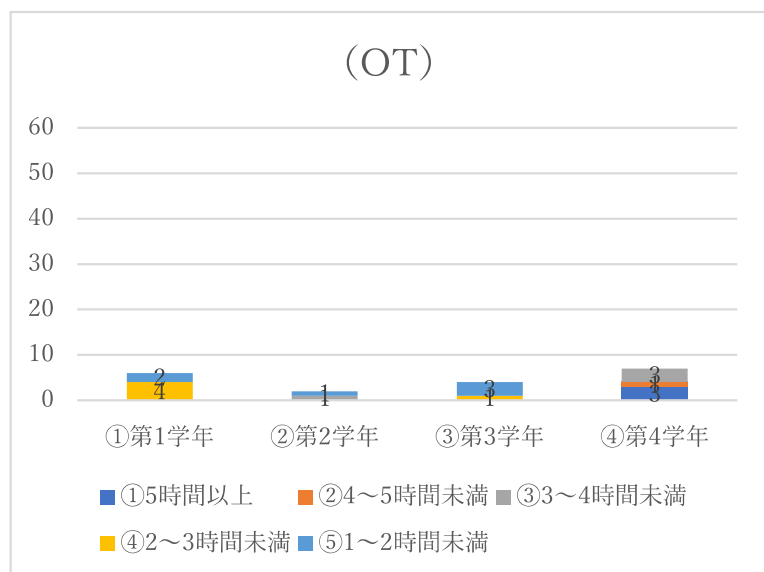
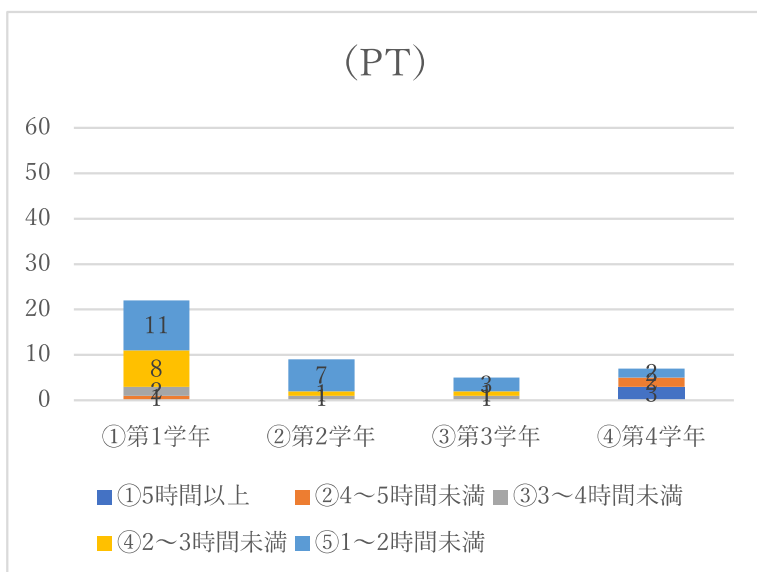
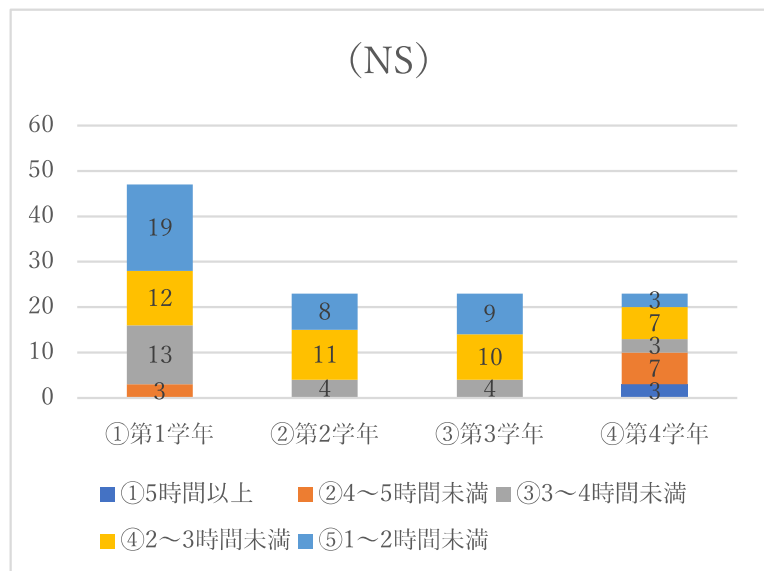
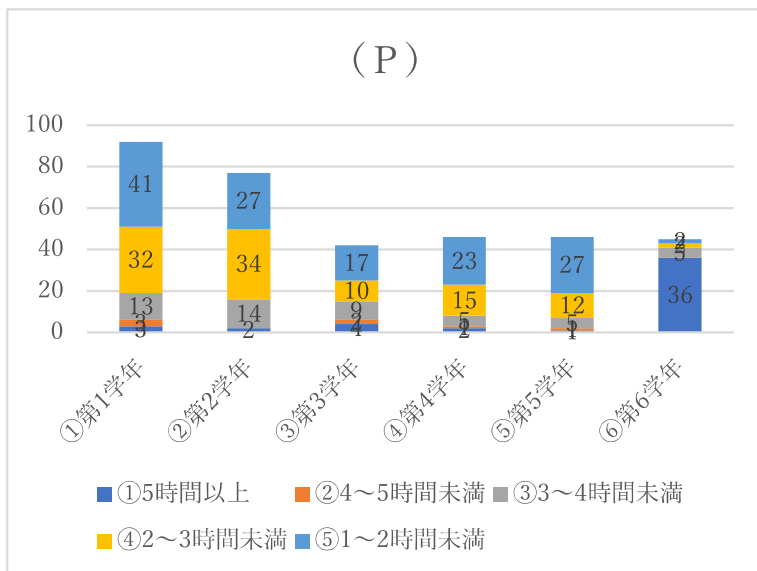
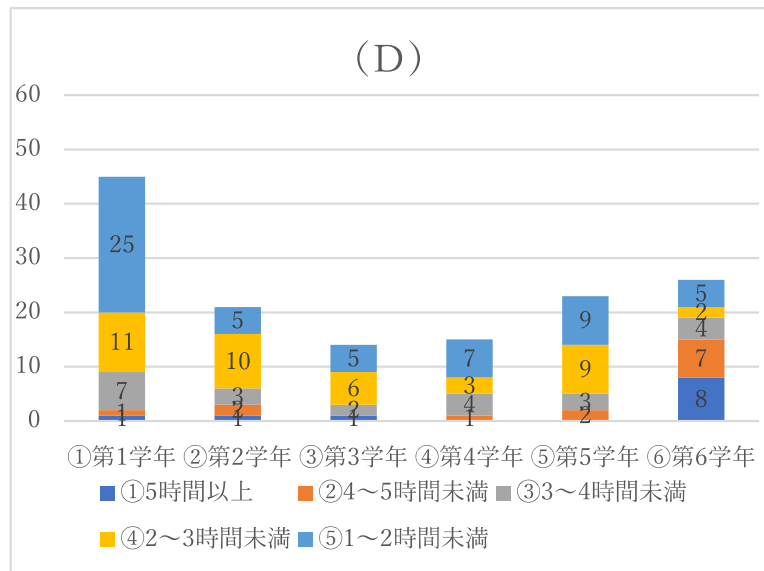
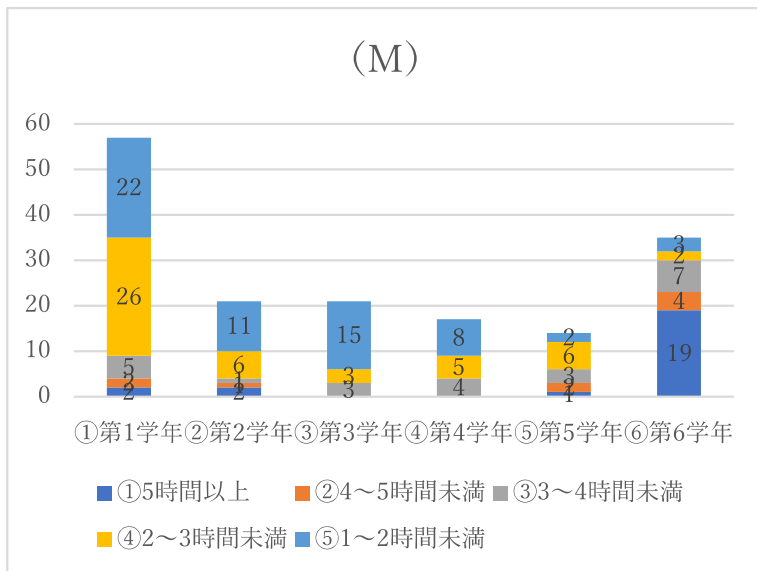
6. 通学時間(片道)はどのくらいですか？



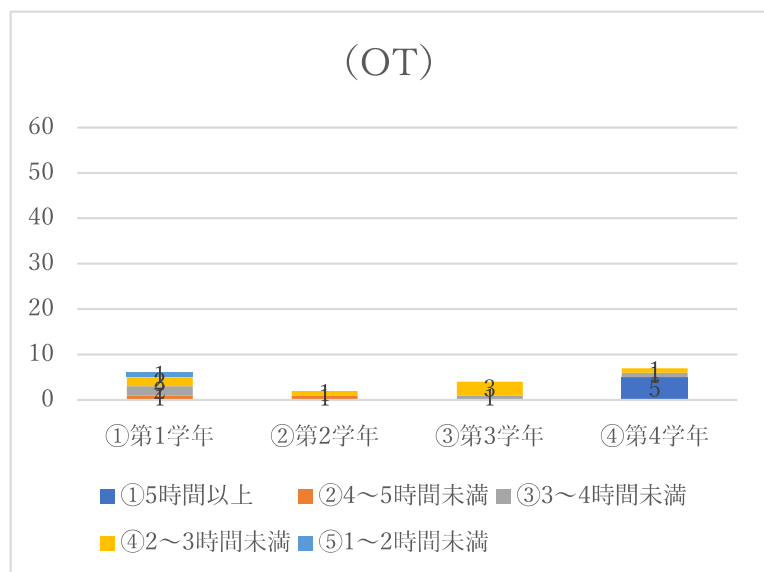
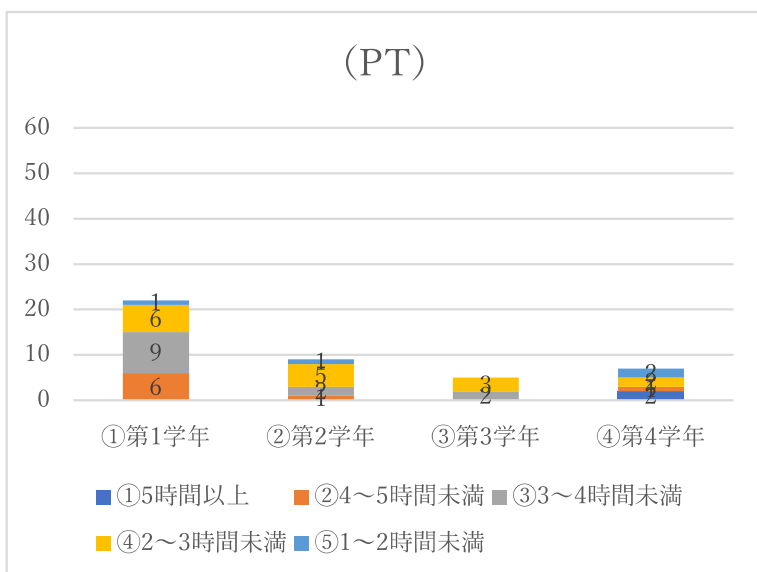
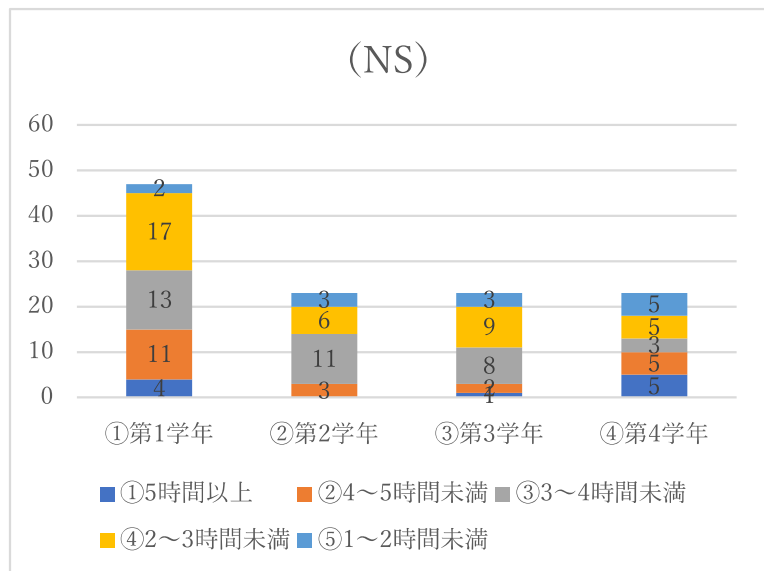
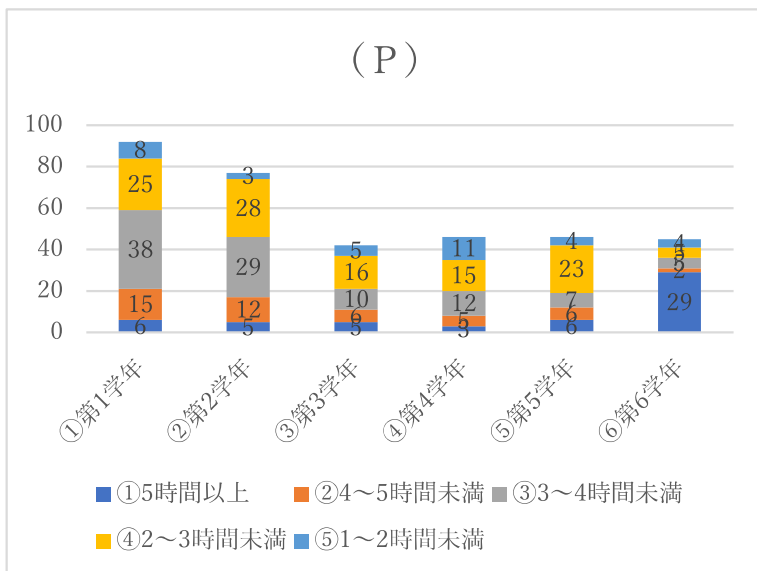
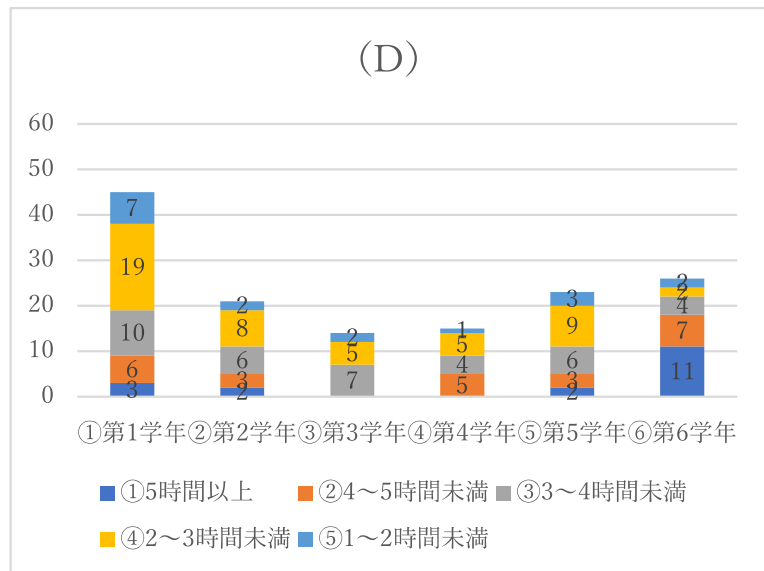
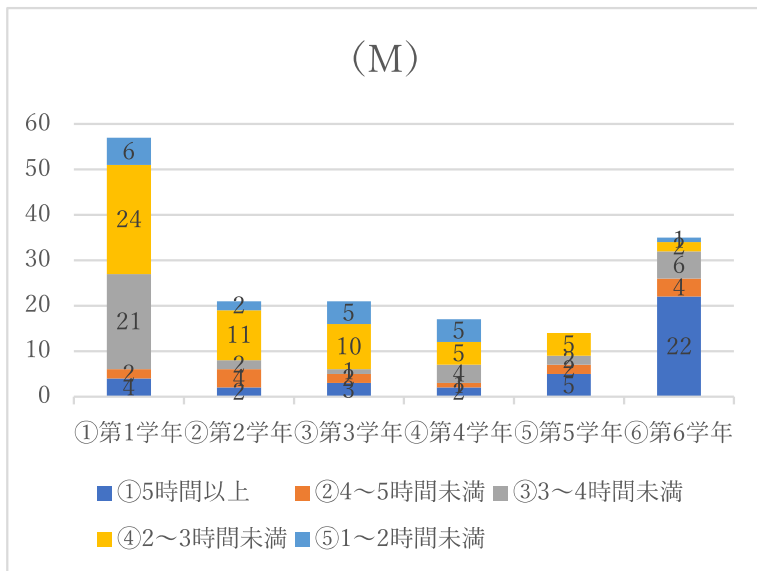
7. 普段、授業以外に、平均して週に何日程度、学修（講義の予習復習、自身の興味に関する学修等）しますか？



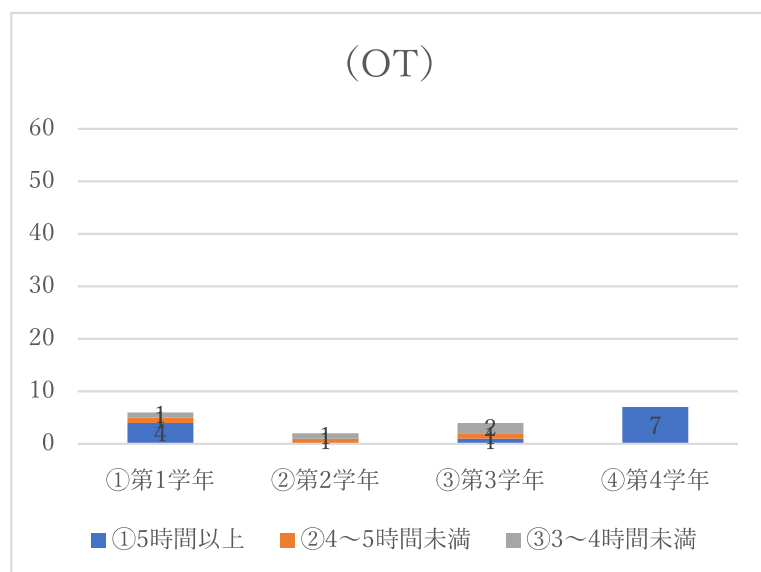
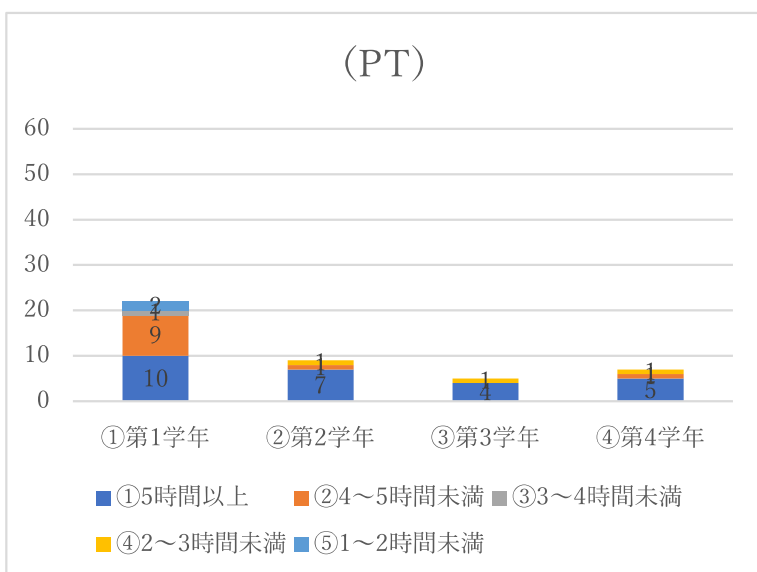
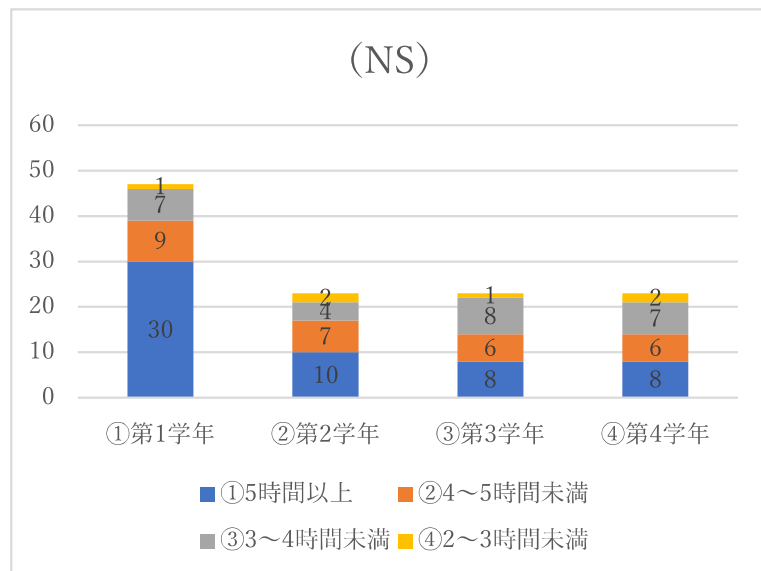
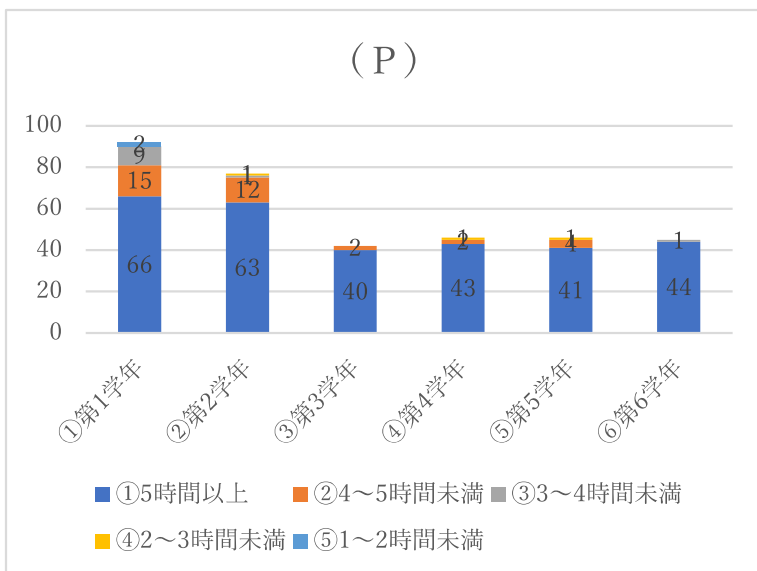
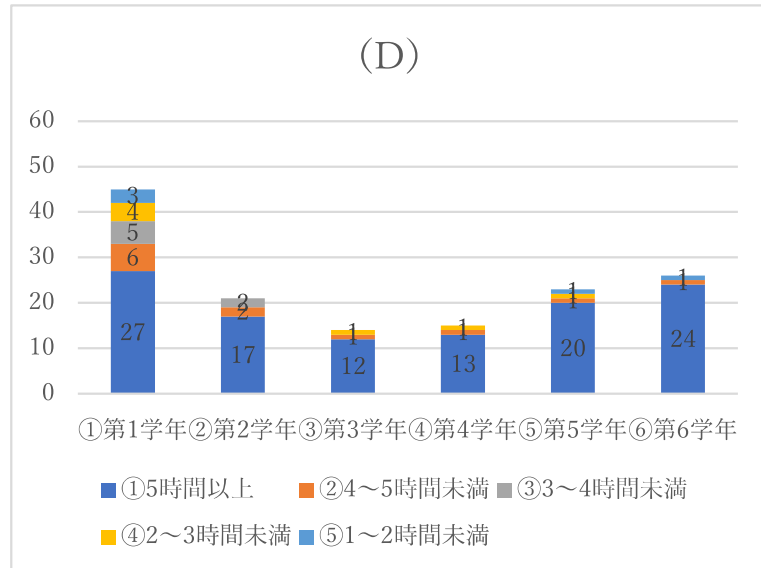
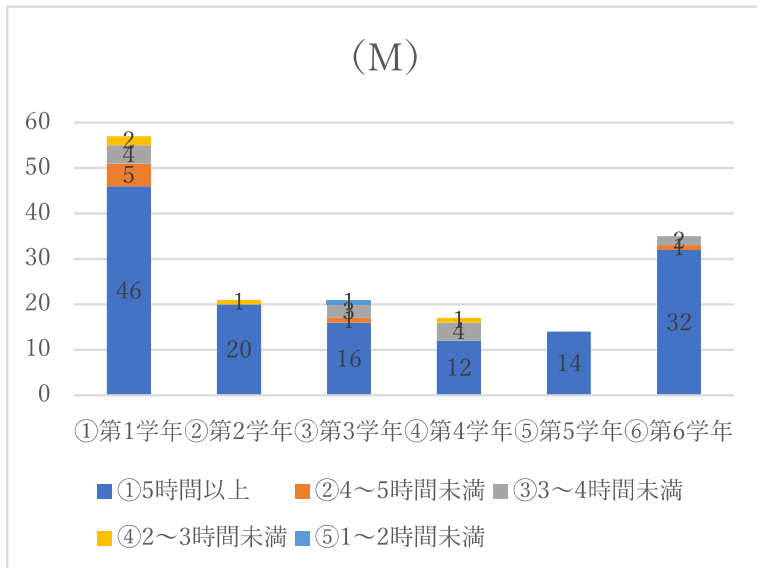
8.Q7の学修日の1日あたりの学修時間はどのくらいですか？



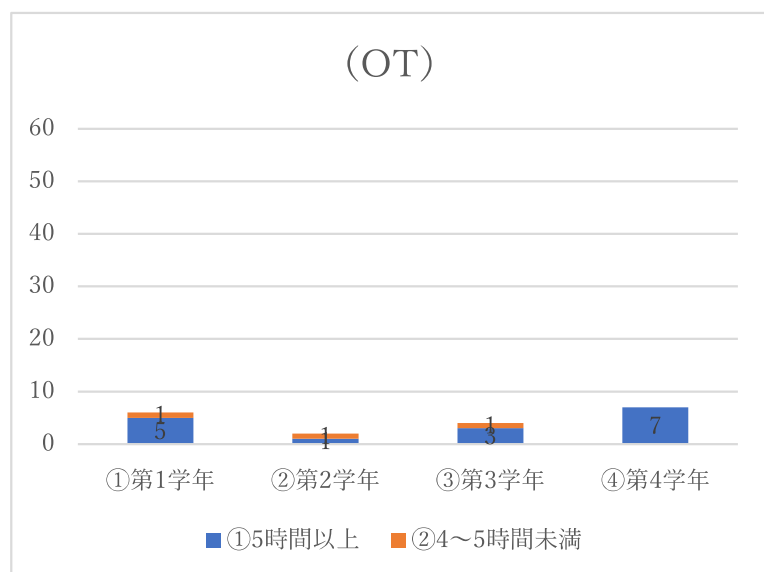
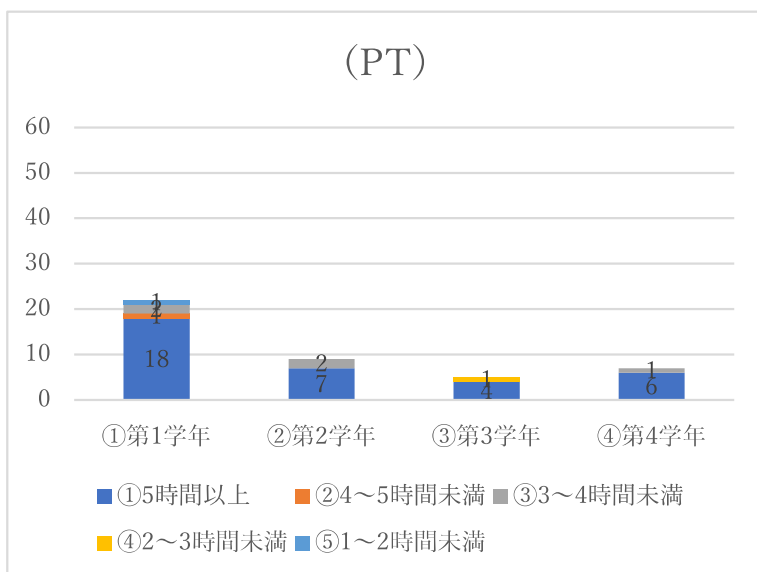
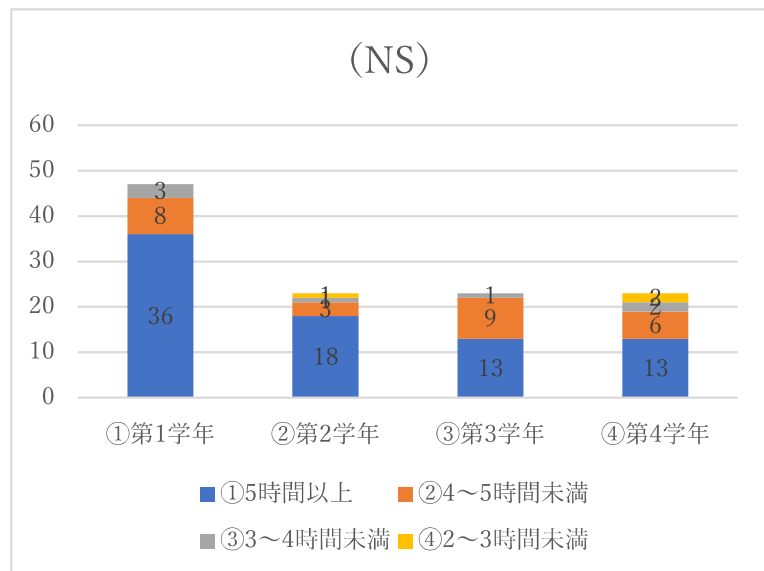
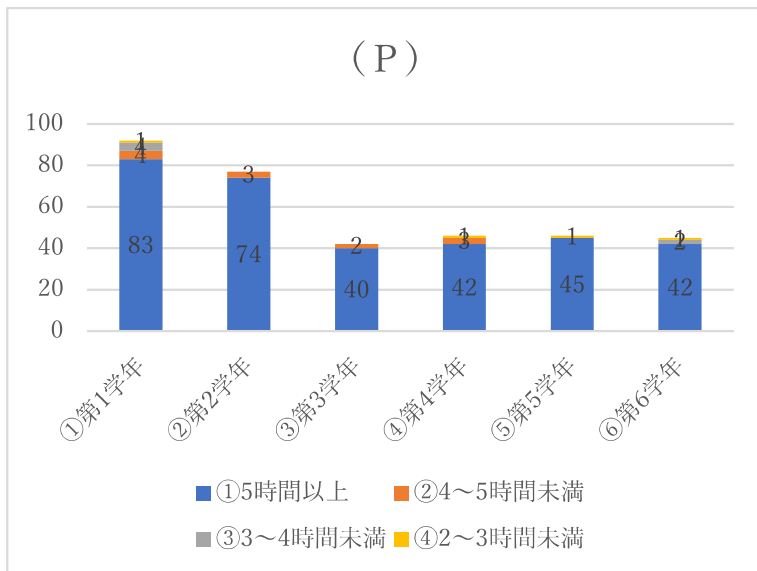
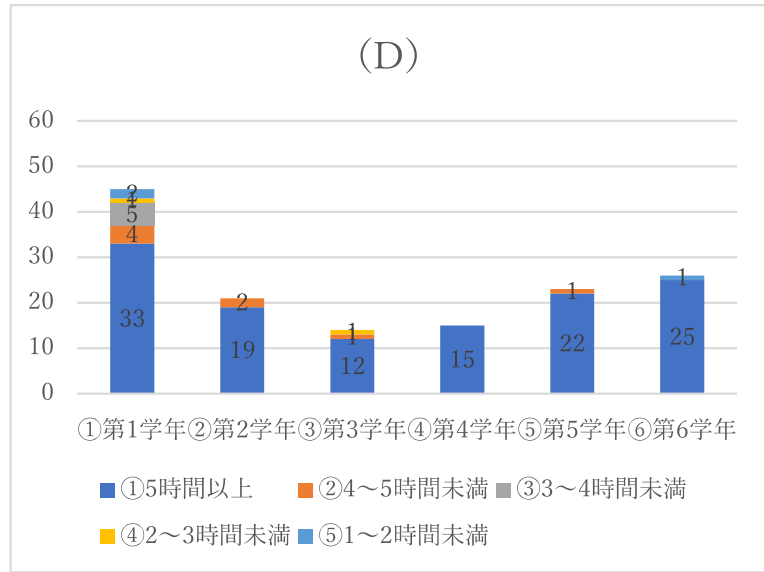
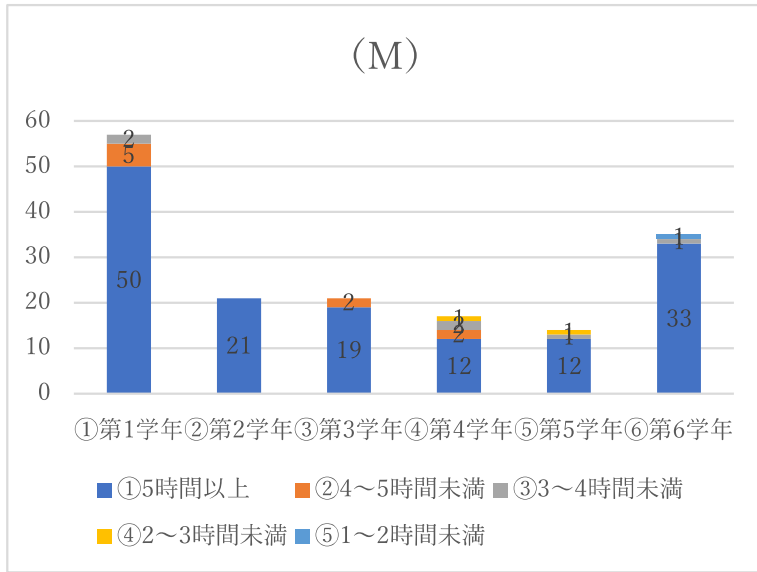
9. 普段の1日の理想的な学修時間は授業を受けている時間以外にどのくらい必要だと思いますか？



10.試験期間中の1日の学修時間はどのくらいですか？

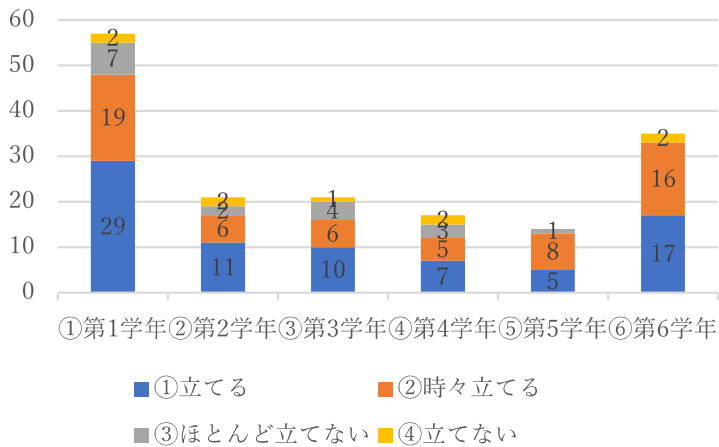


11.試験期間中の1日の理想的な学修時間はどれくらい必要だと思いますか？

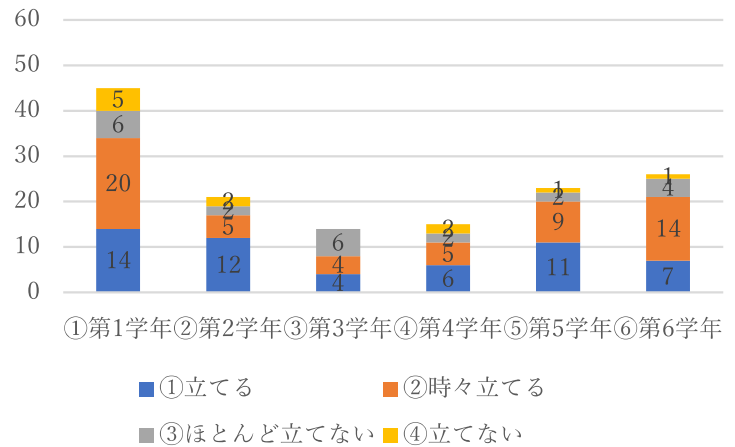


12.試験前には学修計画を立てていますか？

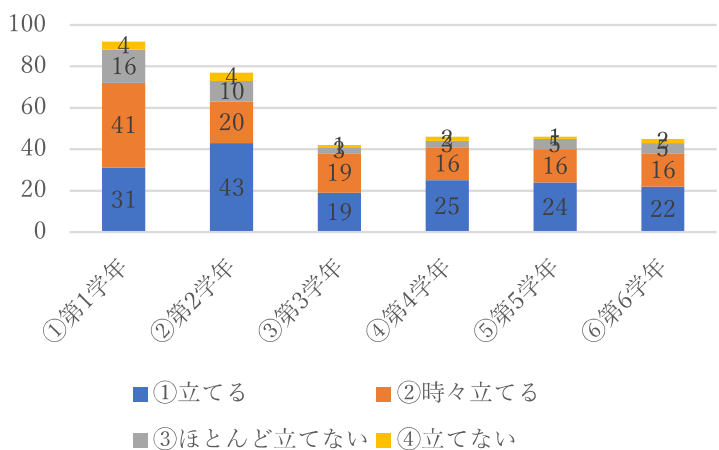
(M)



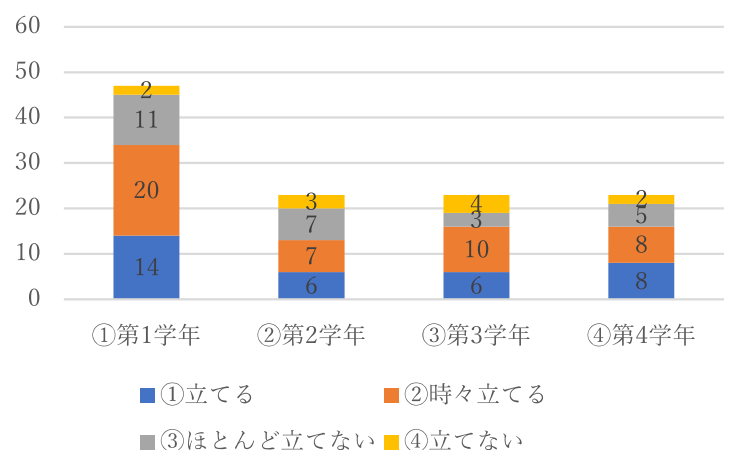
(D)



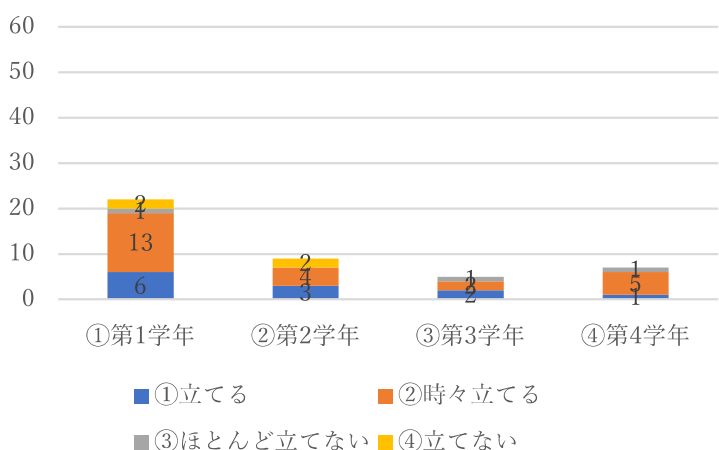
(P)



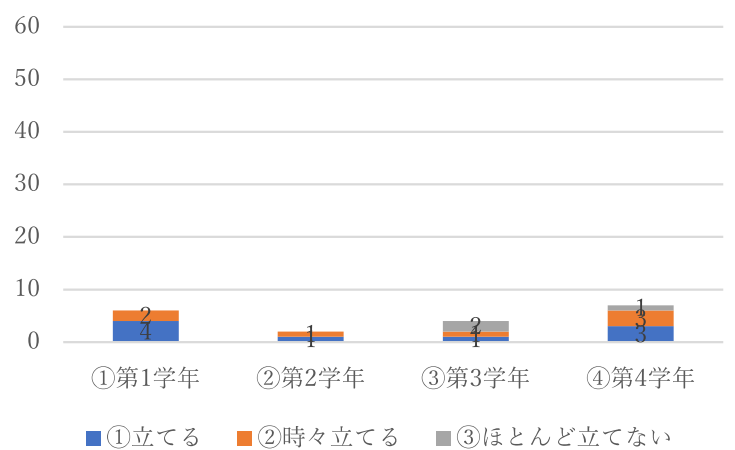
(NS)



(PT)

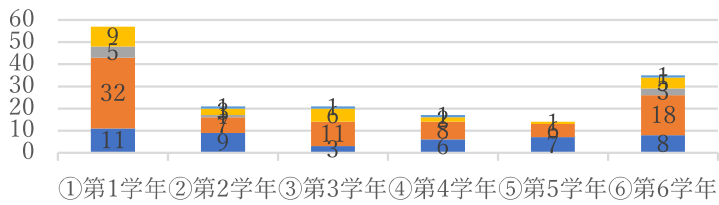


(OT)

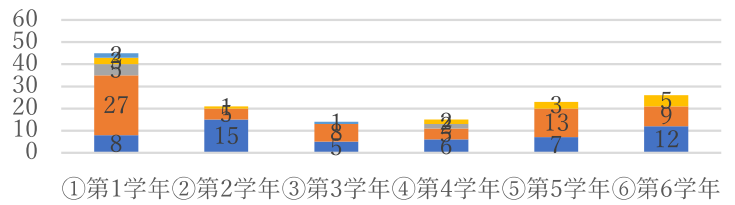


15.一番快適に学修できる場所はどこですか？

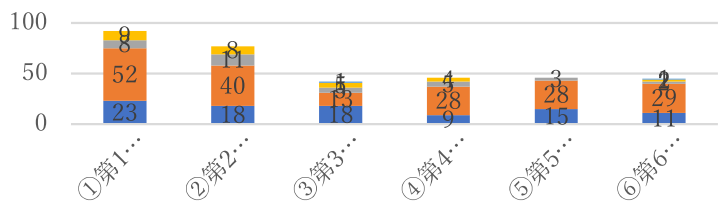
(M)



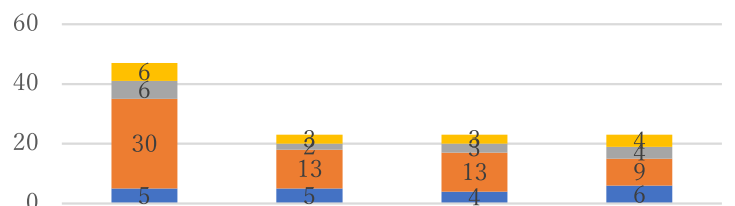
(D)



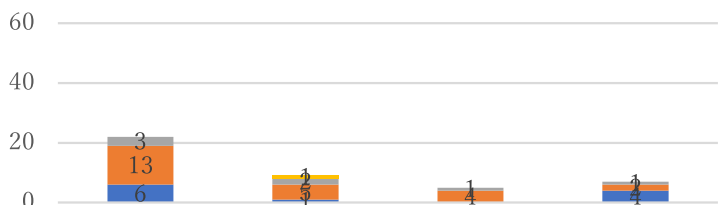
(P)



(NS)



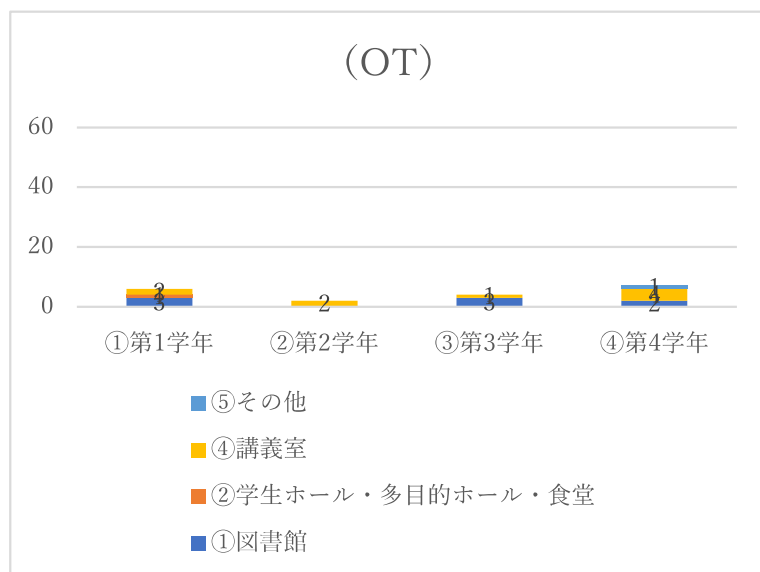
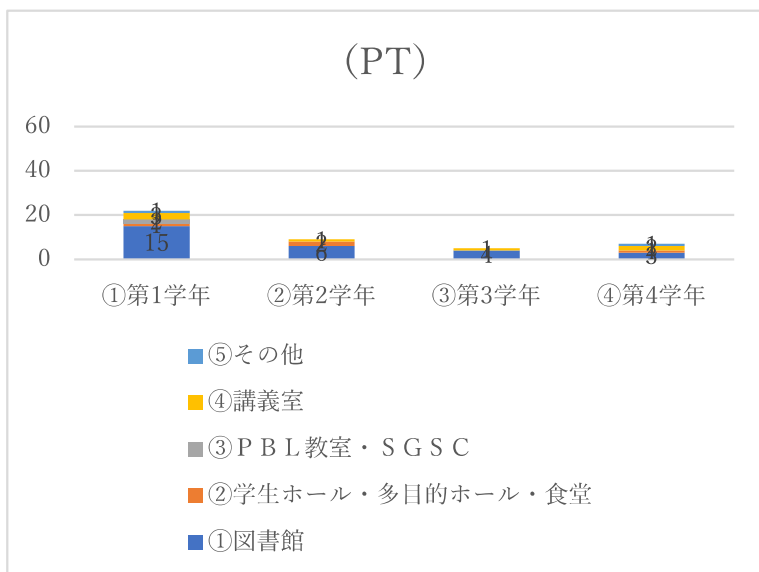
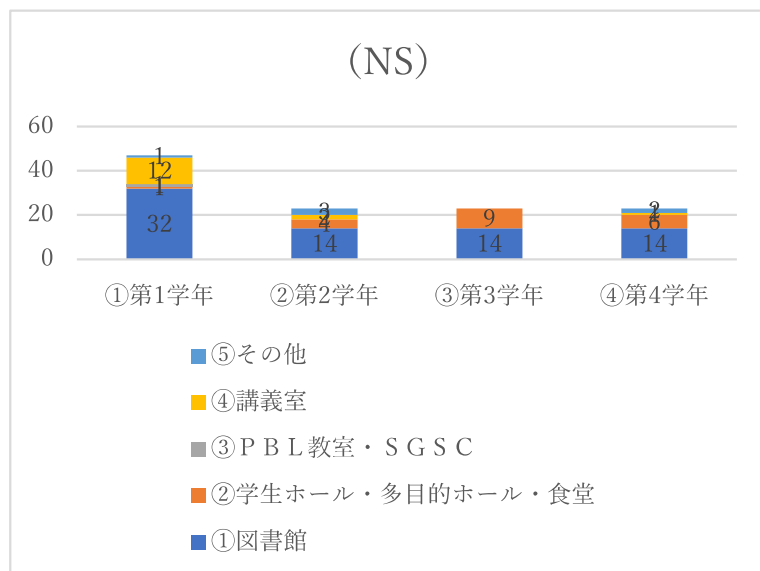
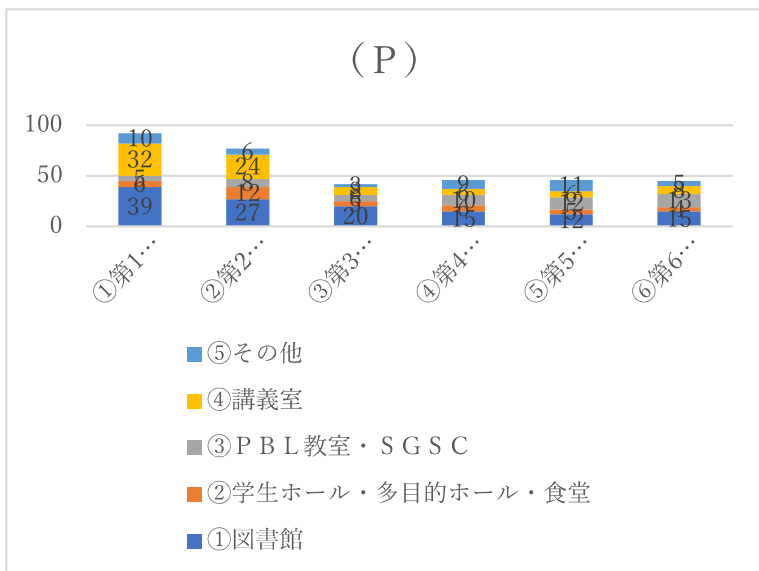
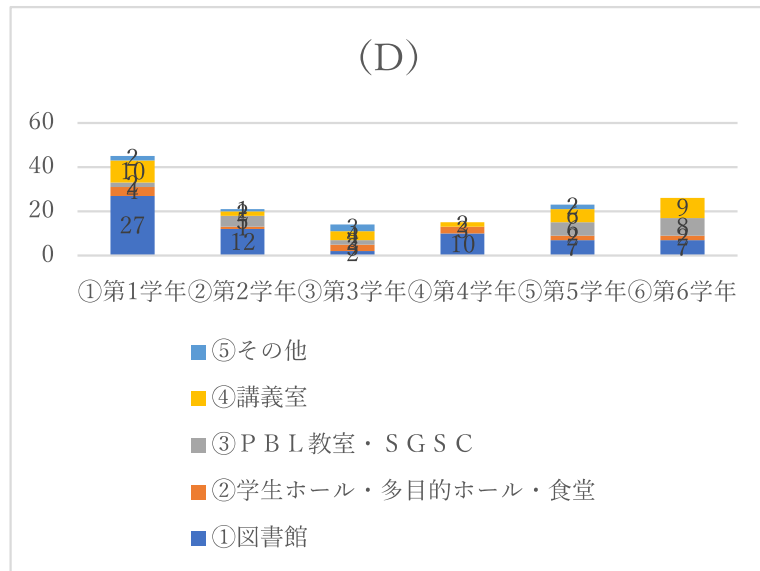
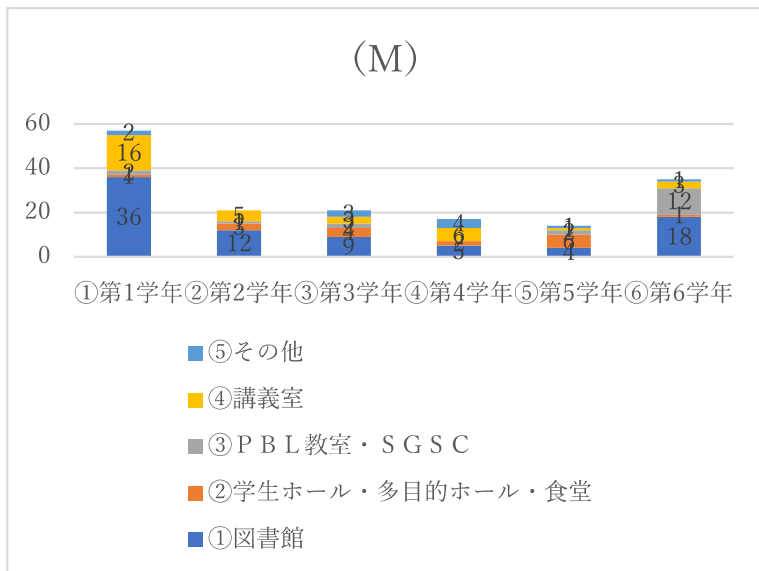
(PT)



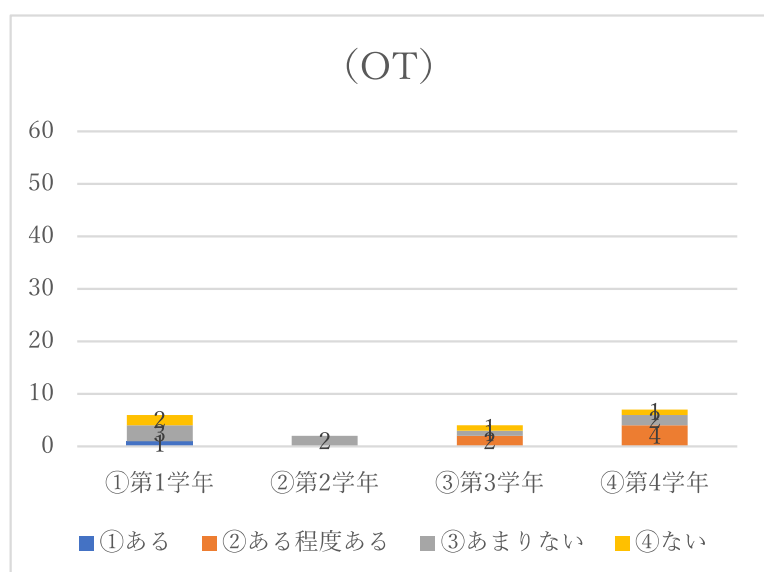
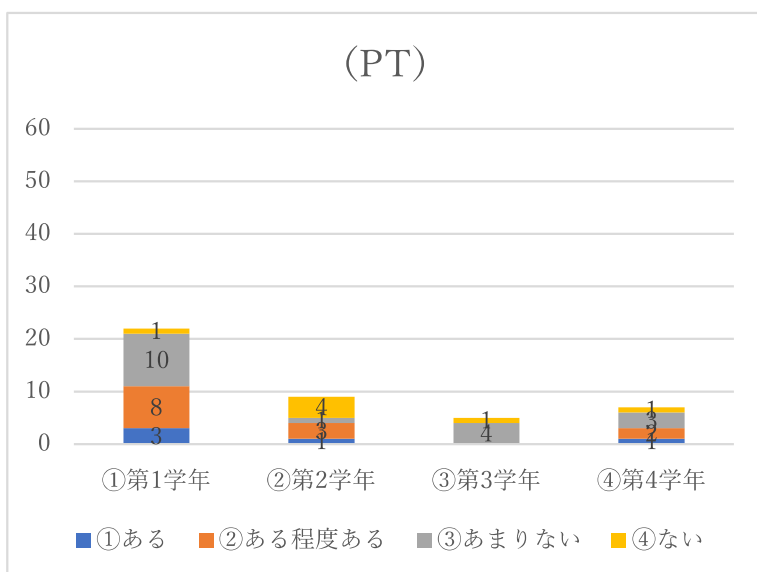
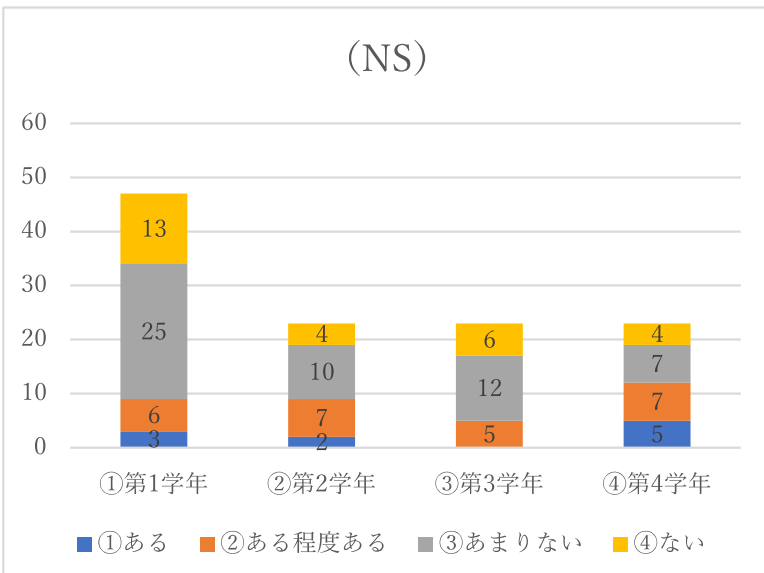
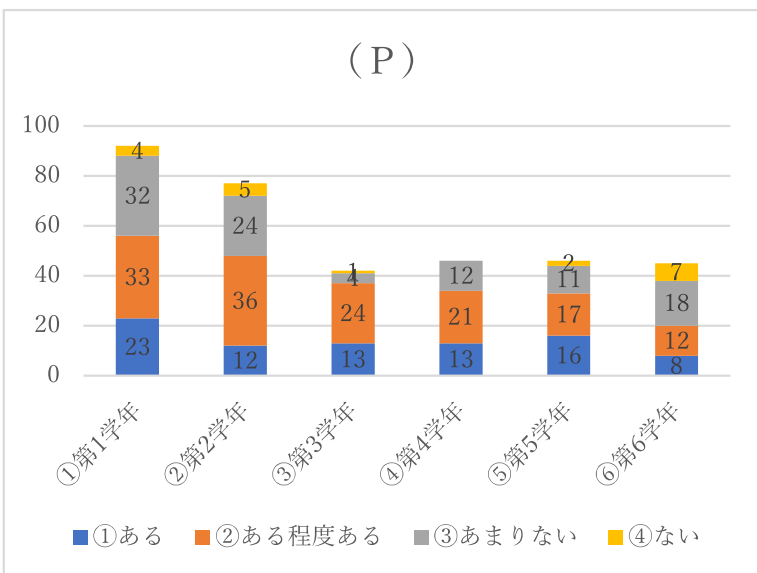
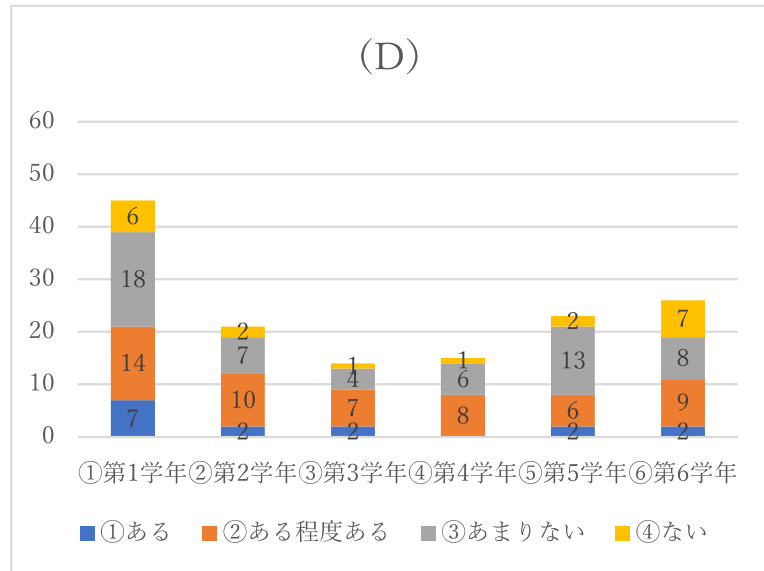
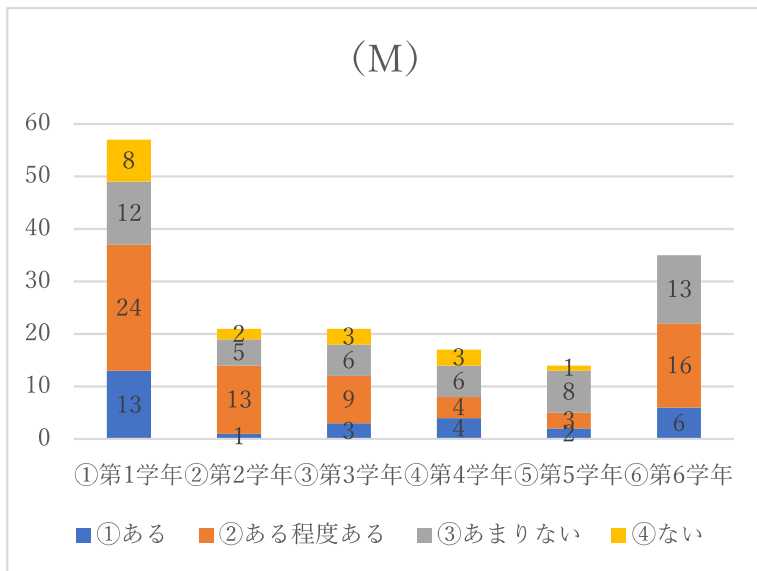
(OT)



16.学内施設で学修する場合、どの場所が一番快適に学修できますか？

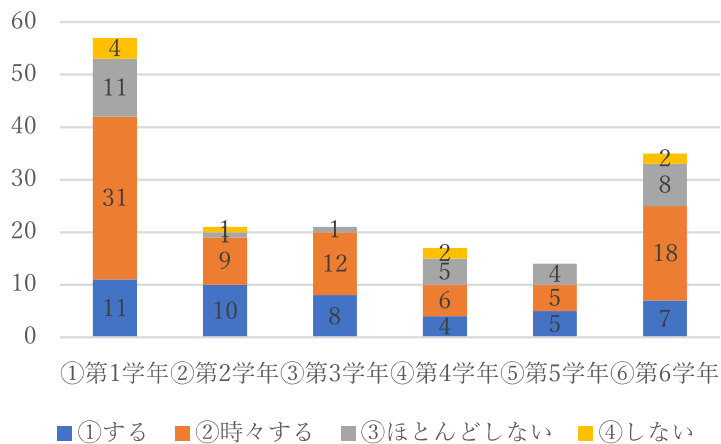


18. 「研究」に興味・関心がありますか？

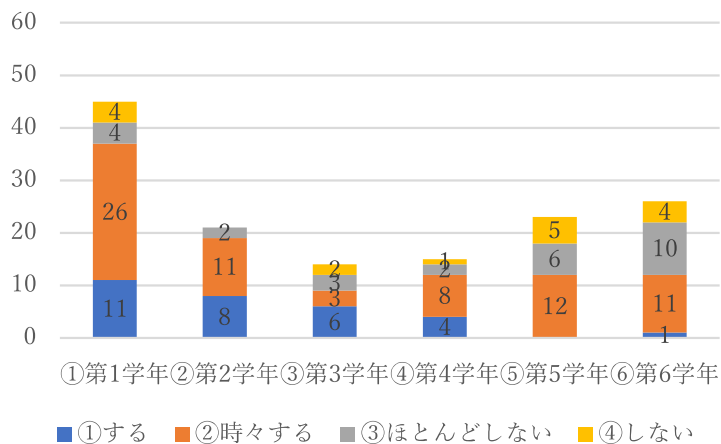


19.授業前にシラバスを確認しますか？

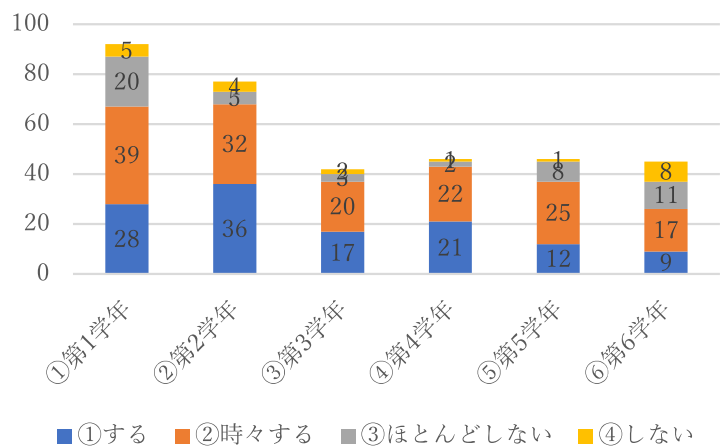
(M)



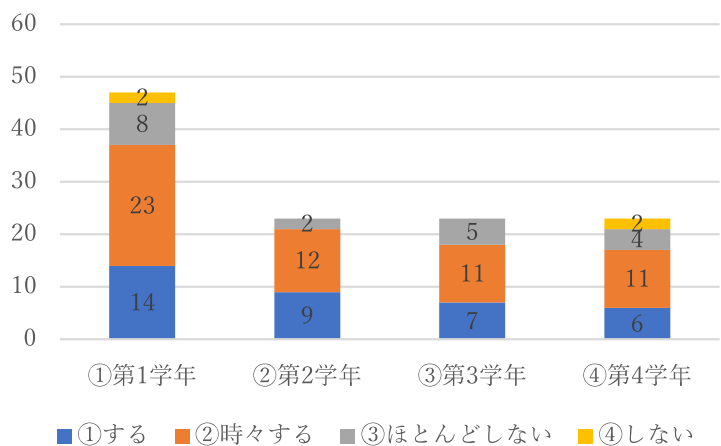
(D)



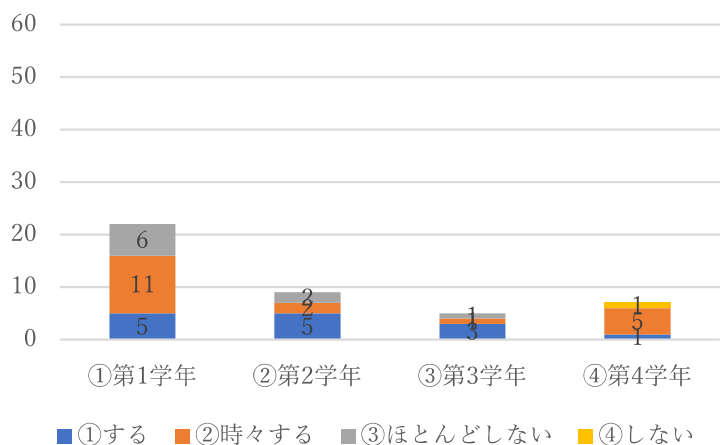
(P)



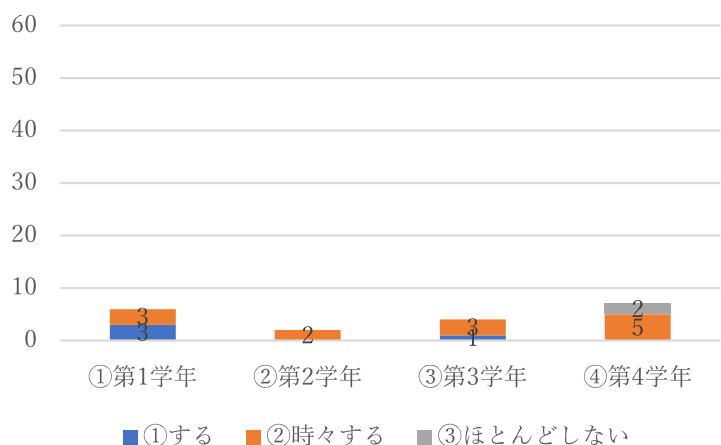
(NS)



(PT)

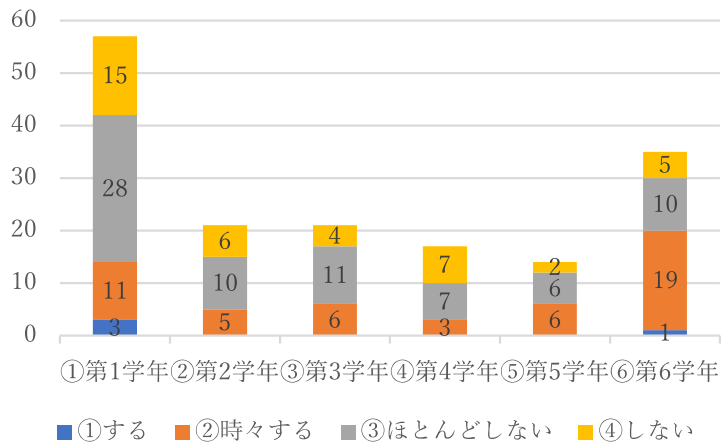


(OT)

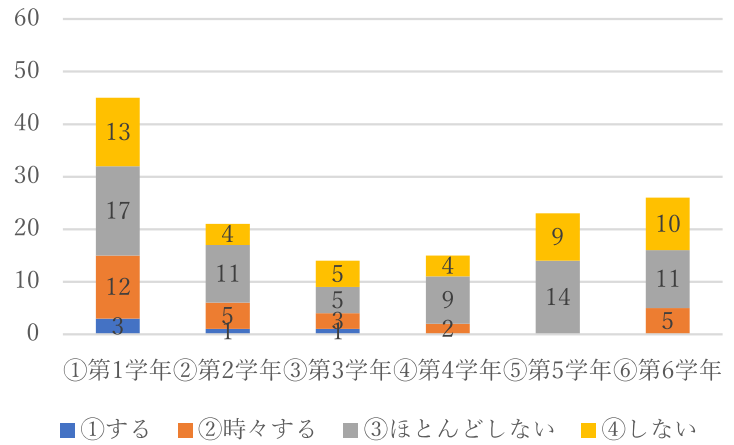


20.授業前にシラバスを確認し、予習をしますか？

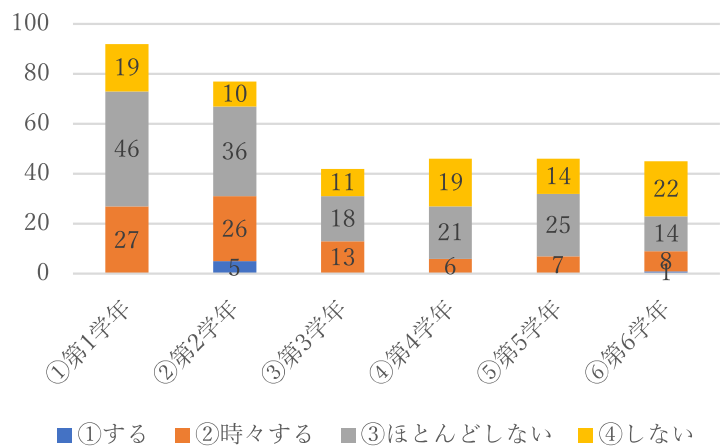
(M)



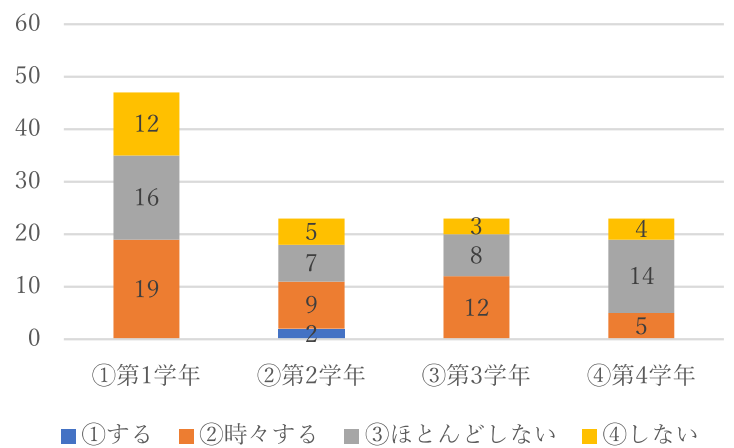
(D)



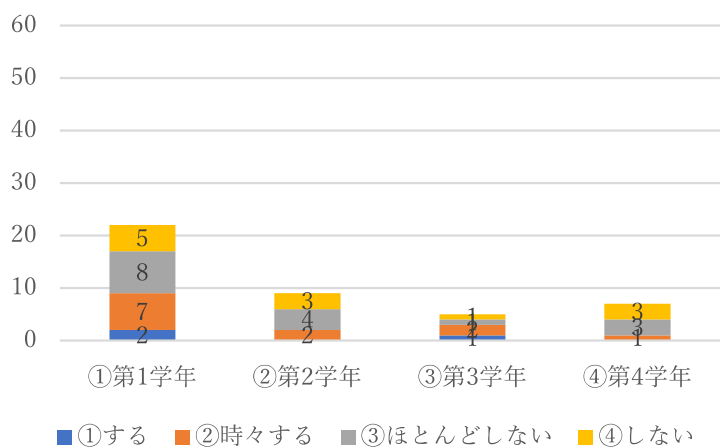
(P)



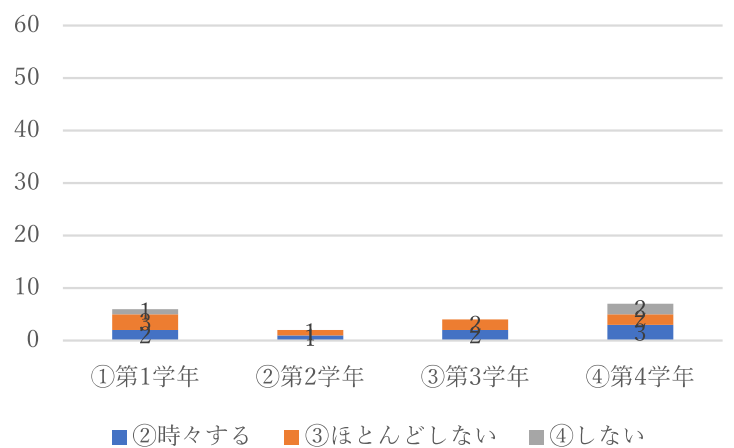
(NS)



(PT)

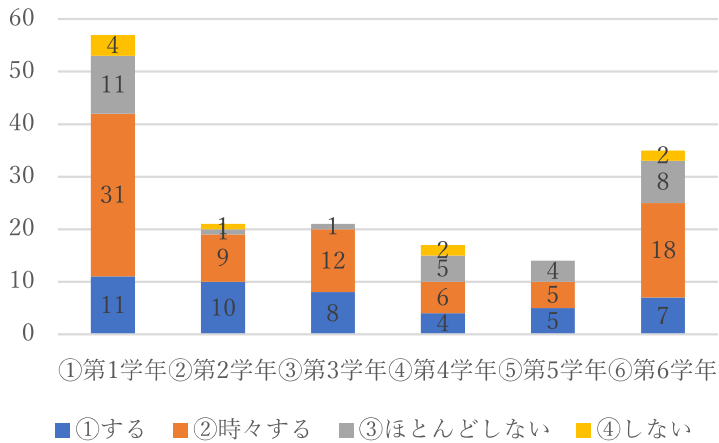


(OT)

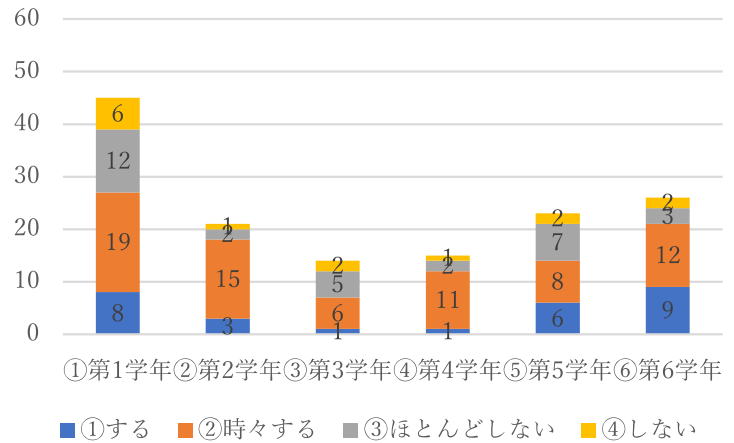


21.授業後に復習をしますか？

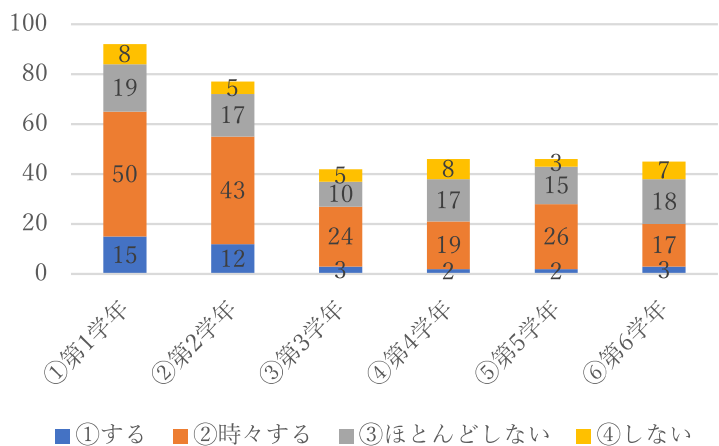
(M)



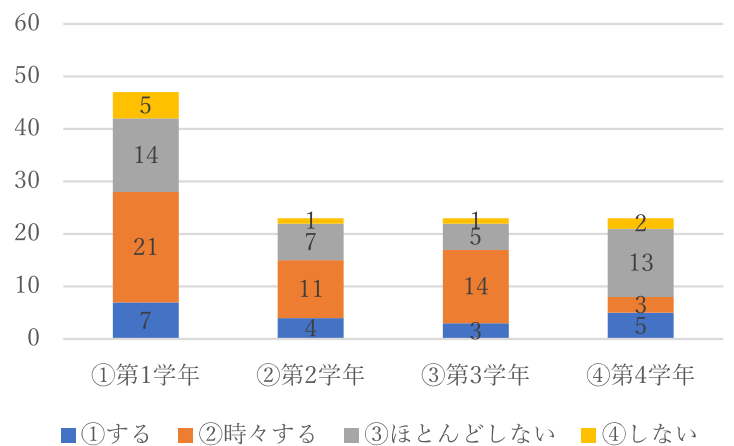
(D)



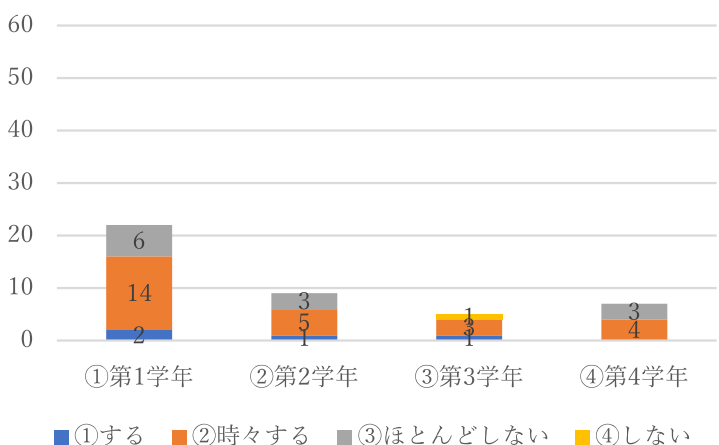
(P)



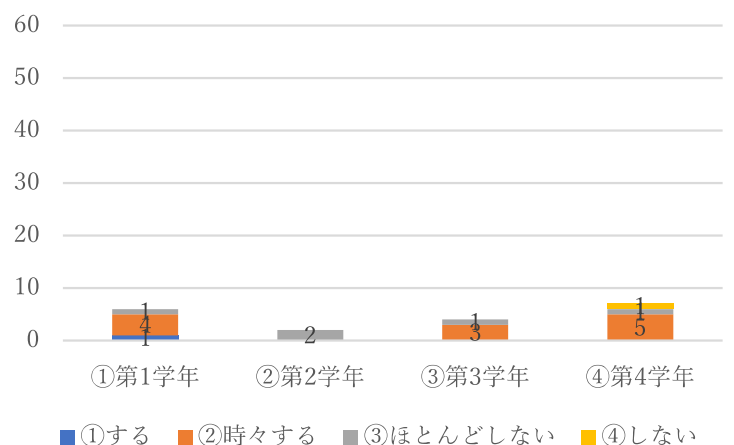
(NS)



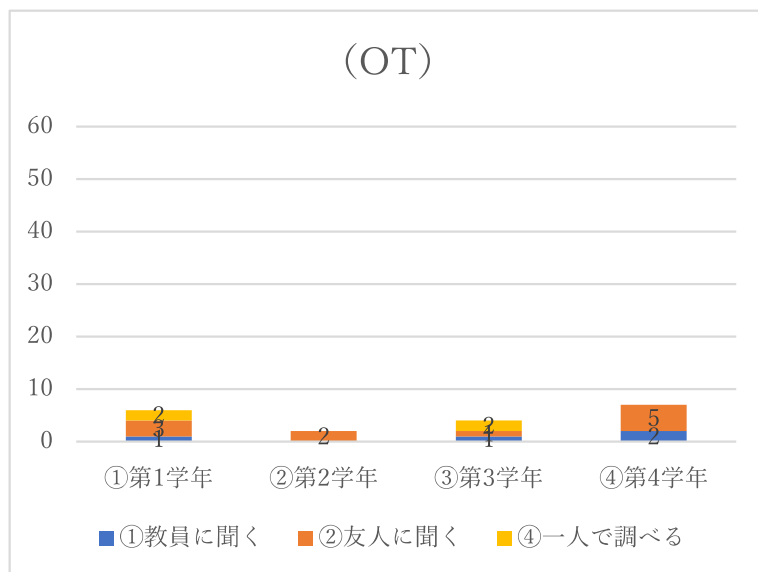
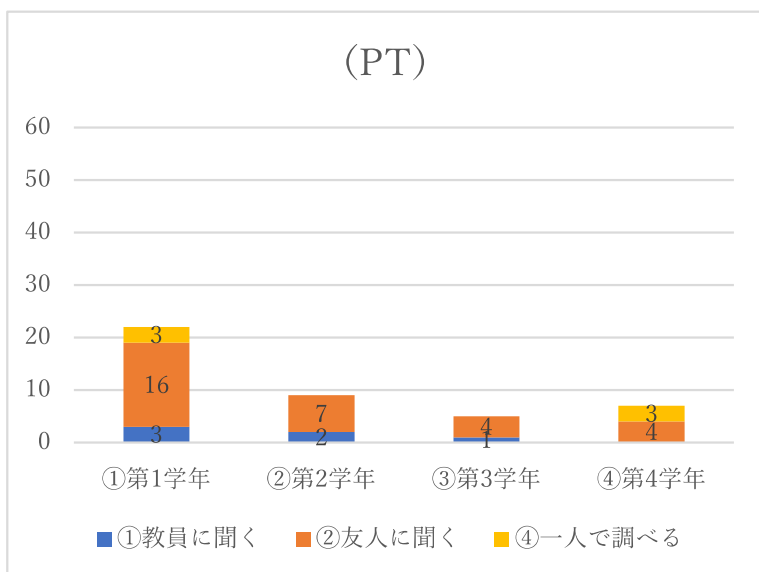
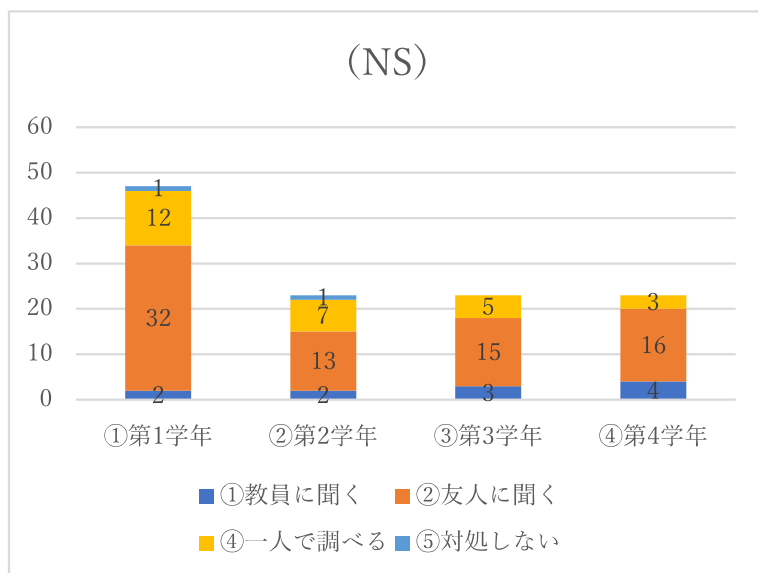
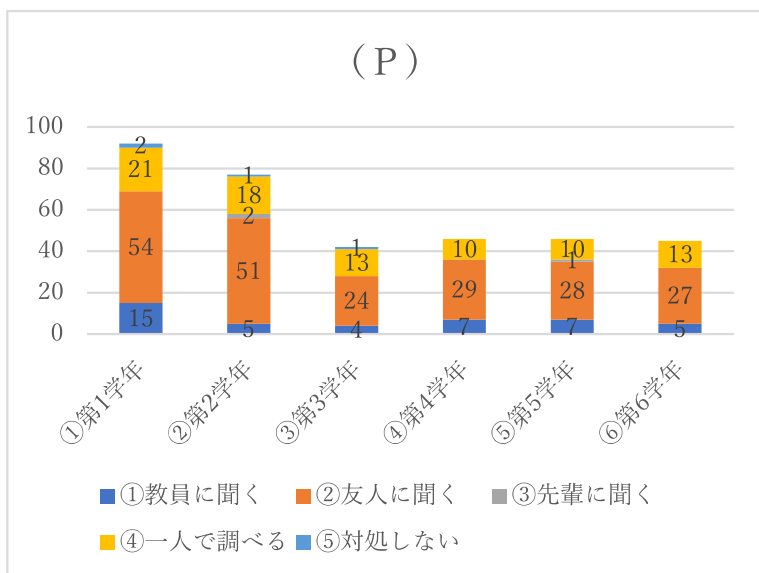
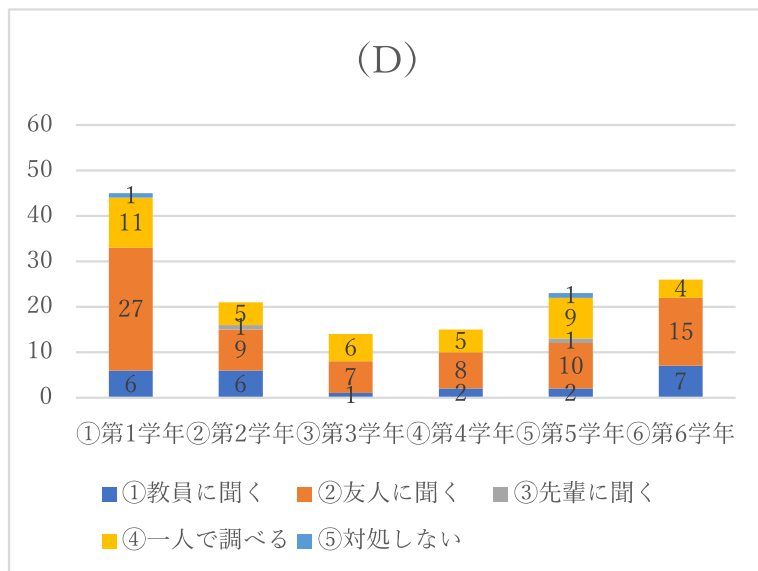
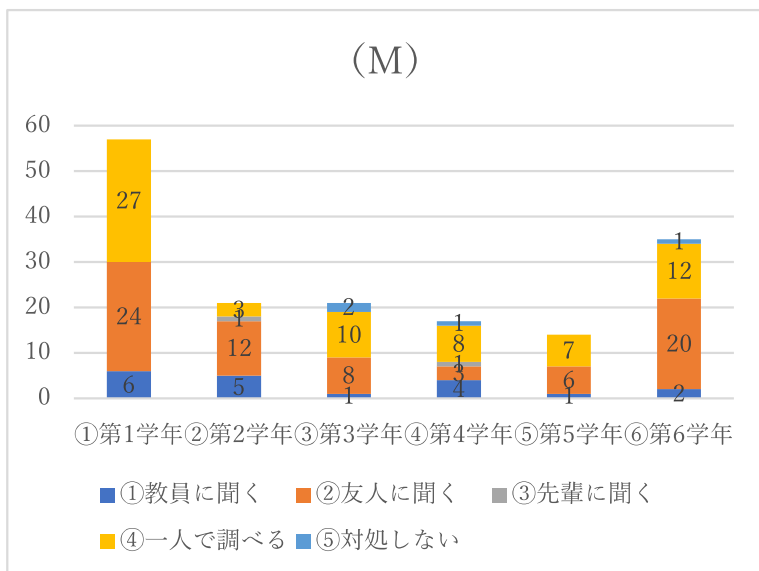
(PT)



(OT)

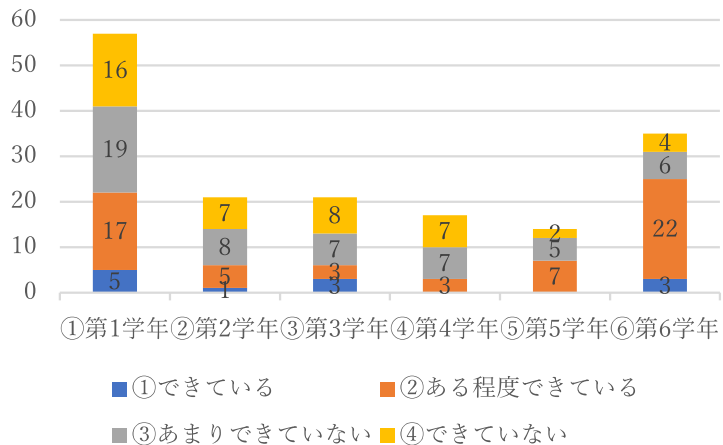


22.授業中に生じた疑問点は、どのように対処していますか？

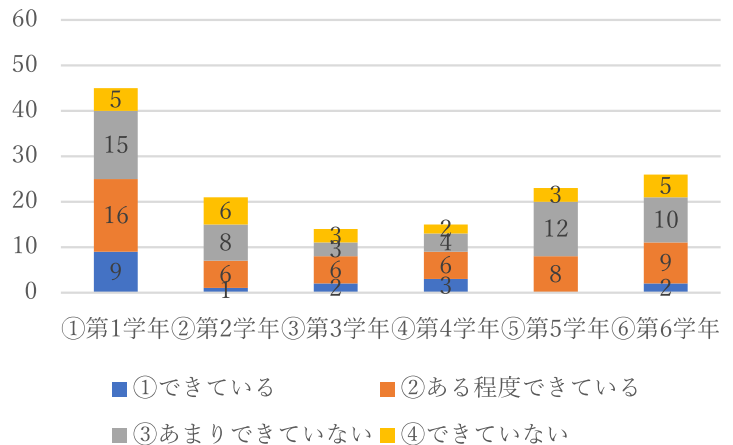


23.ポートフォリオで自らの成長を確認できていますか？

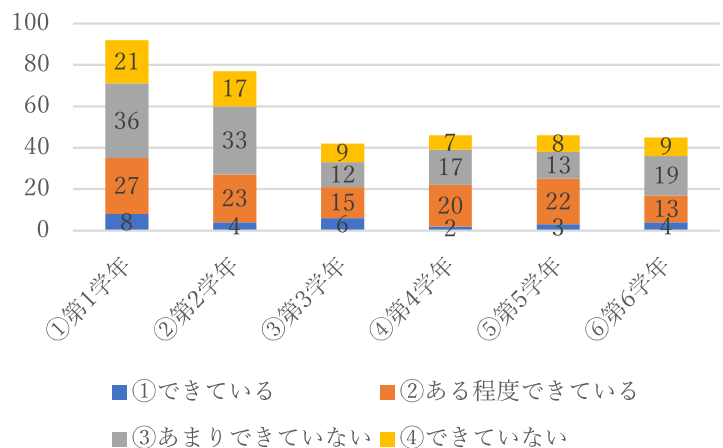
(M)



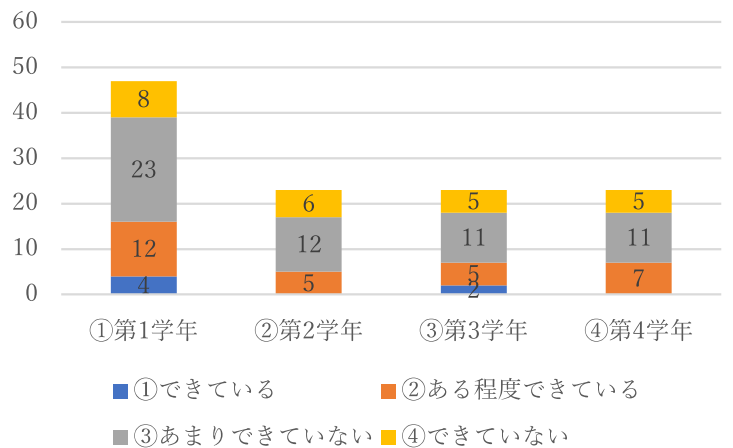
(D)



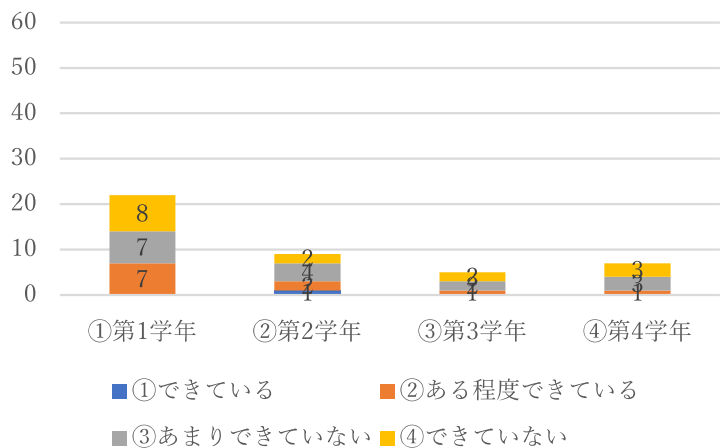
(P)



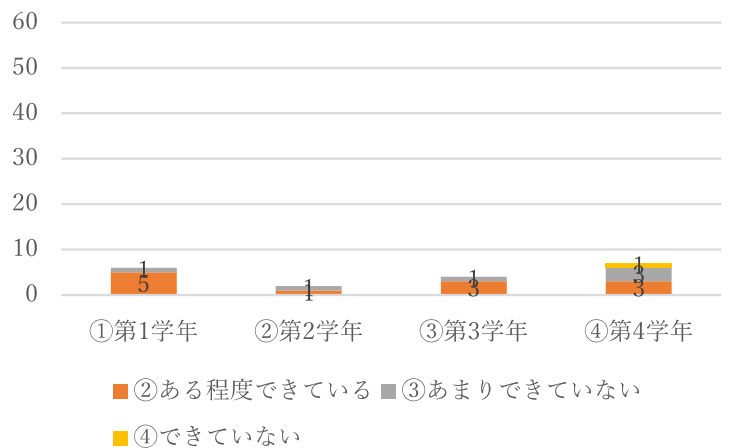
(NS)



(PT)

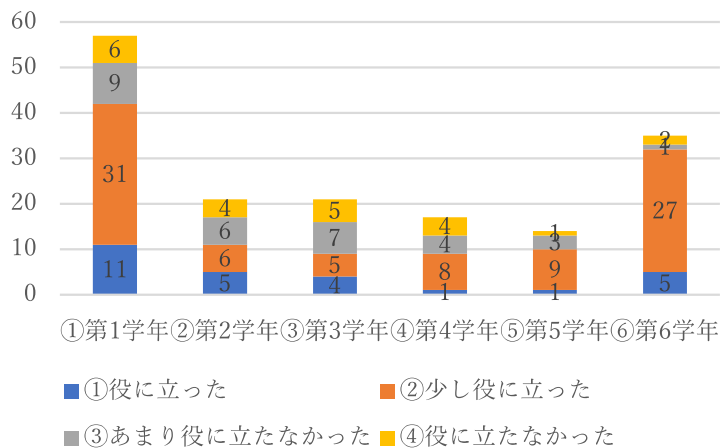


(OT)

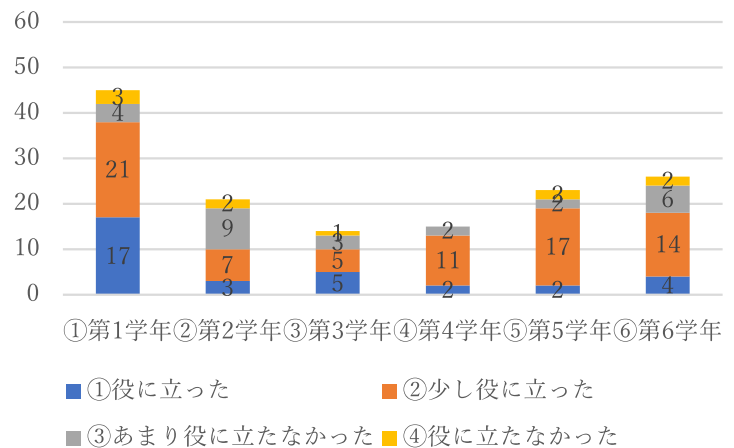


24.ポートフォリオでの指導者からのフィードバックは役に立ちましたか？

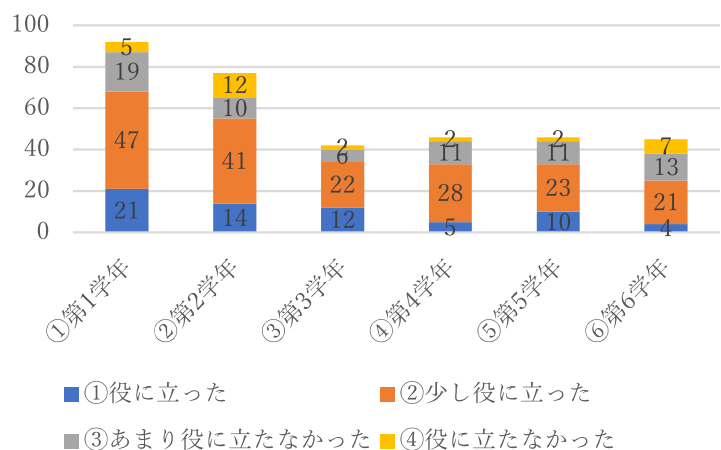
(M)



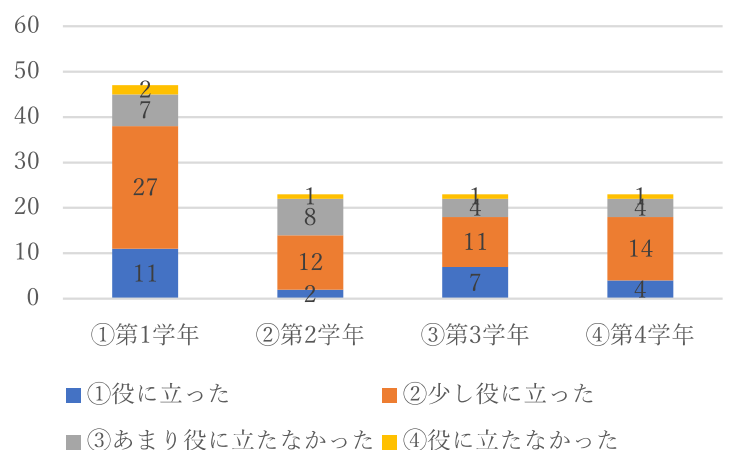
(D)



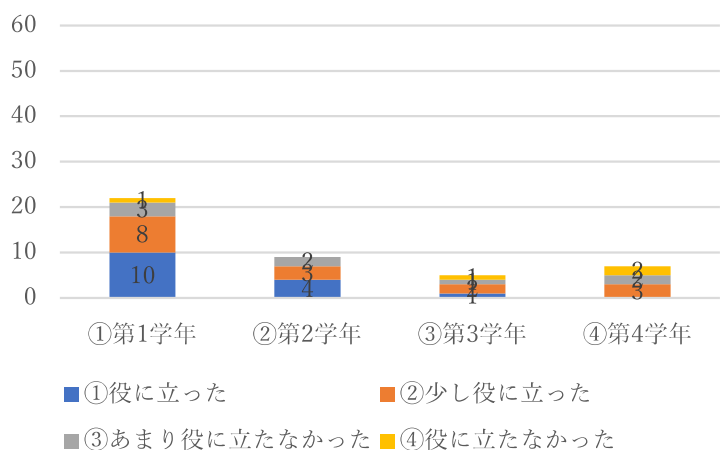
(P)



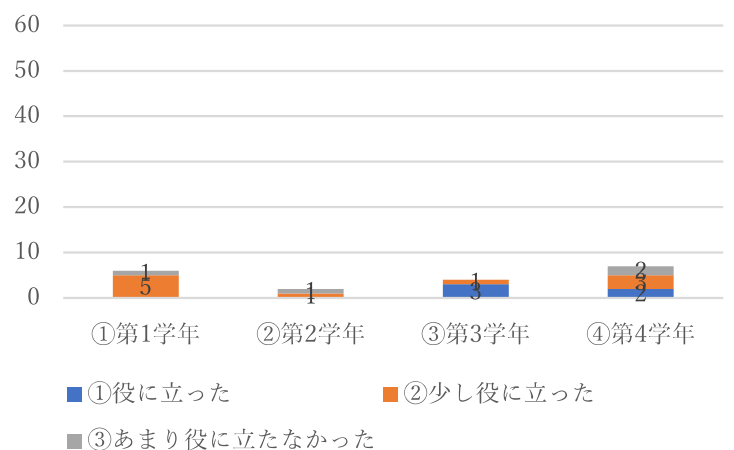
(NS)



(PT)

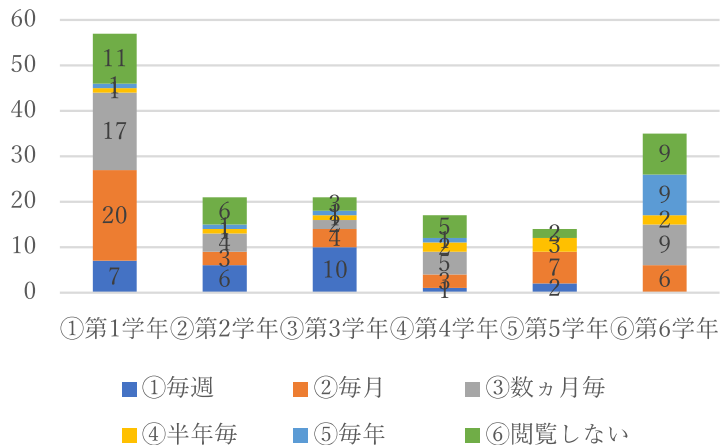


(OT)

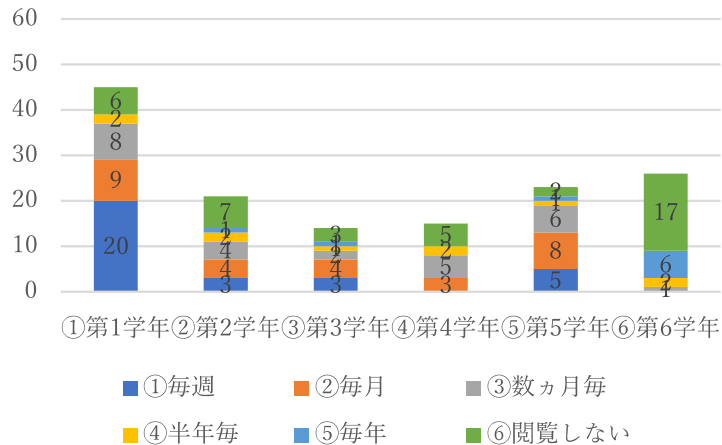


25.ポートフォリオを閲覧する機会はどれくらいありますか？

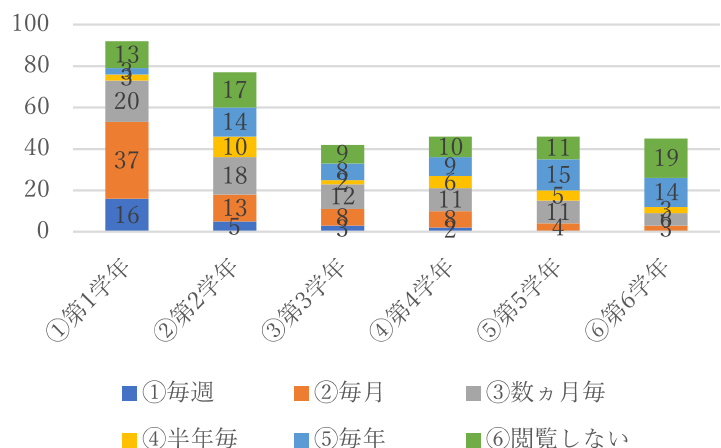
(M)



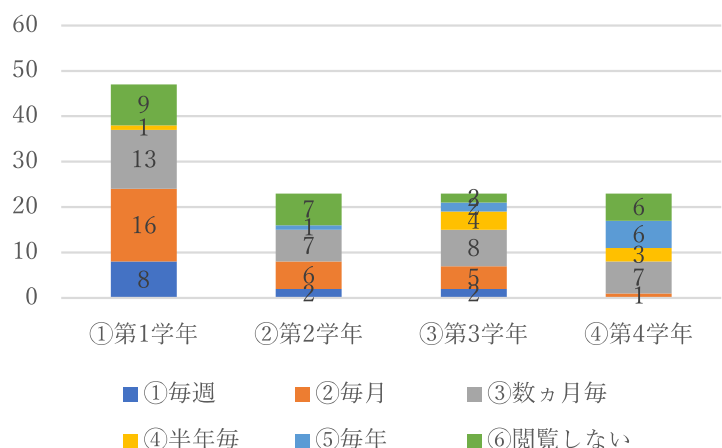
(D)



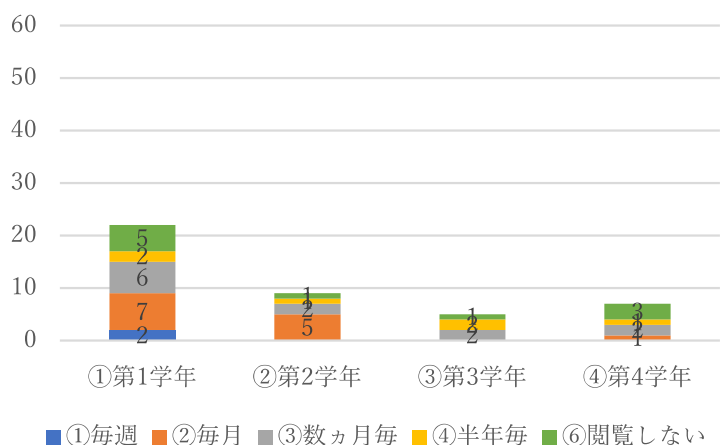
(P)



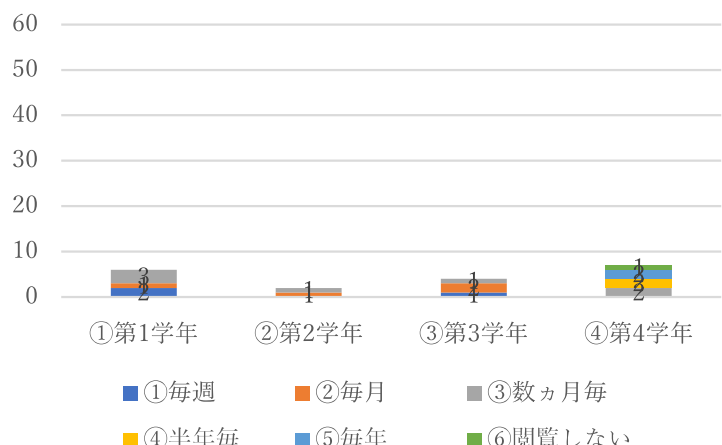
(NS)



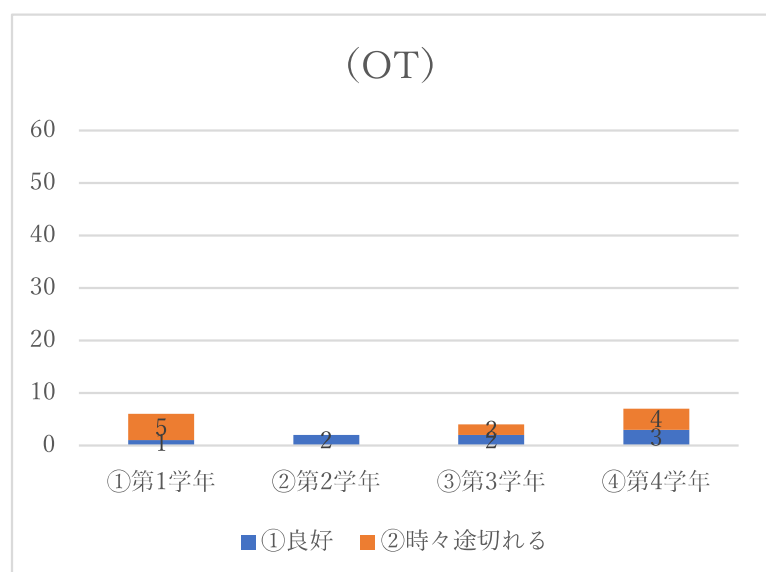
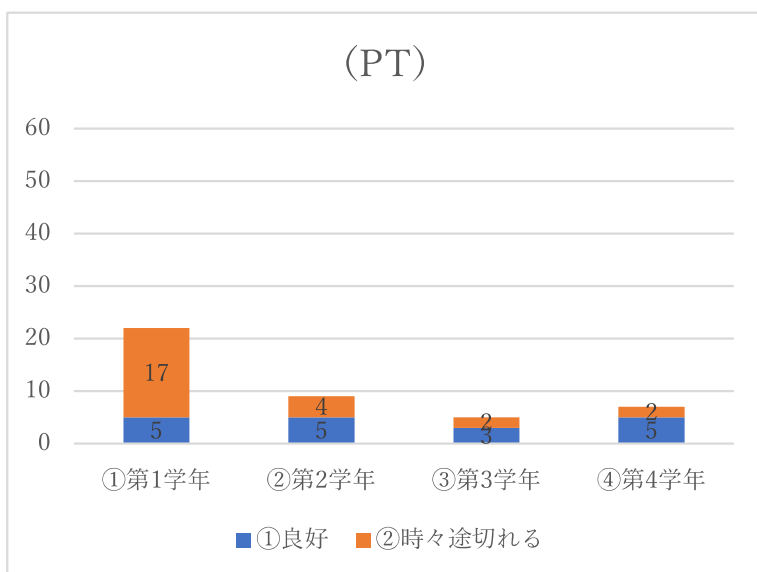
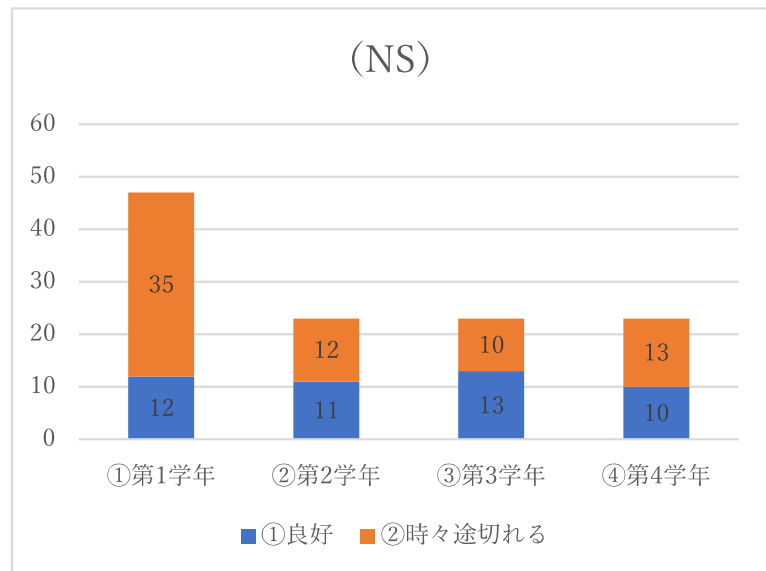
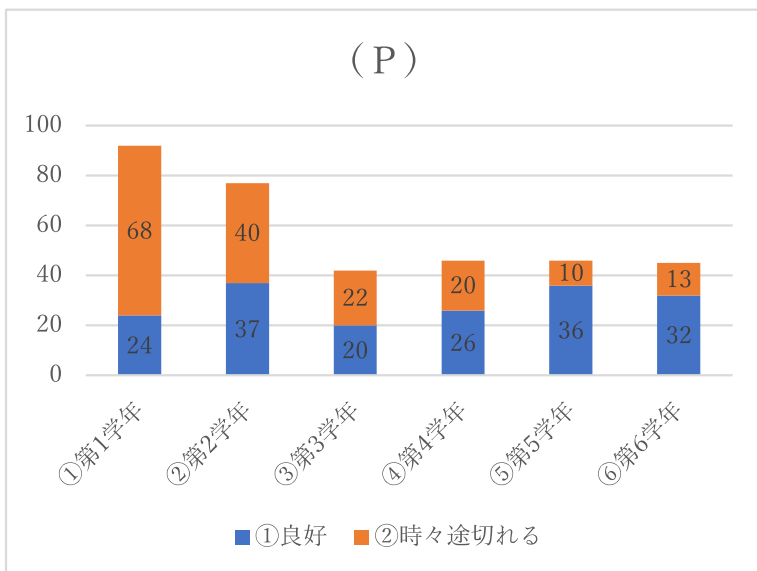
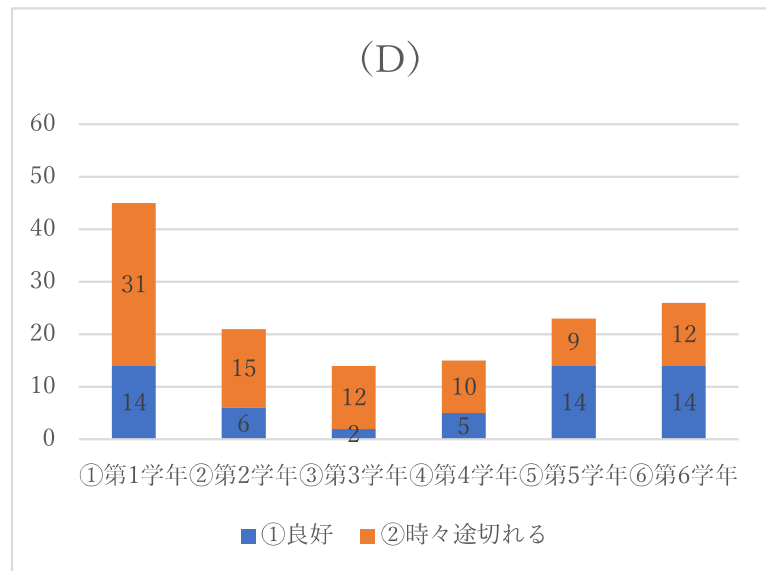
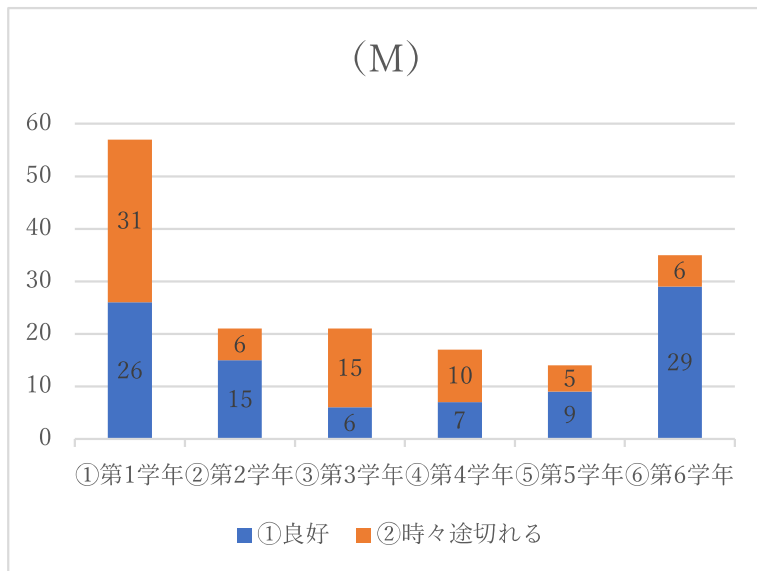
(PT)



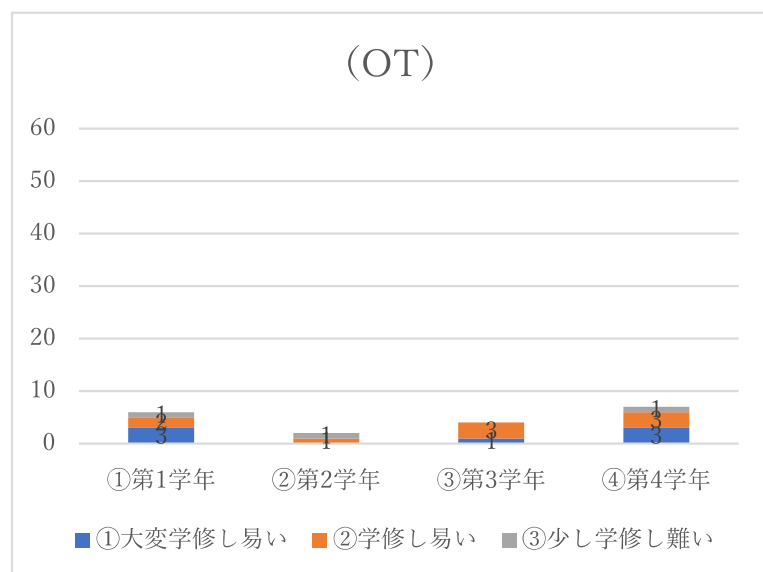
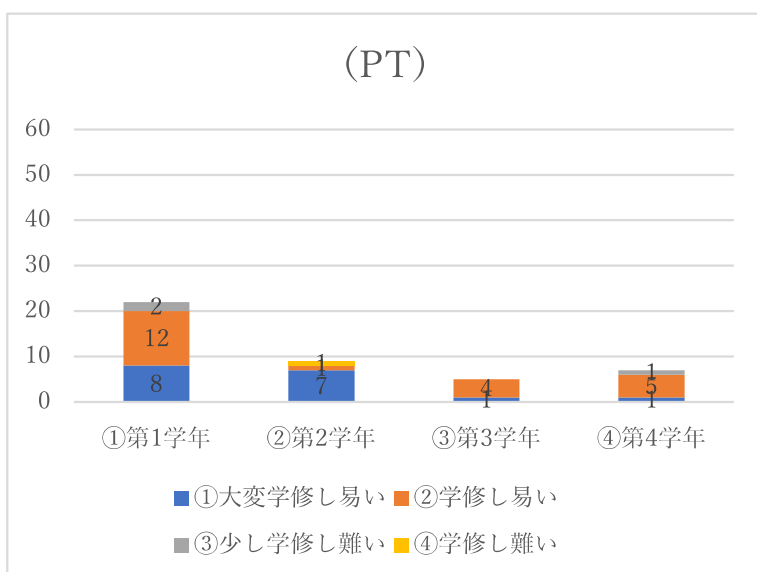
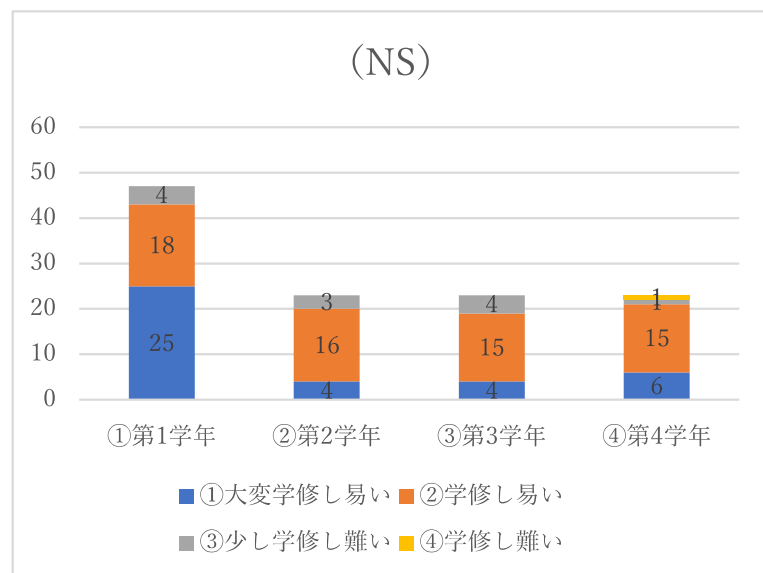
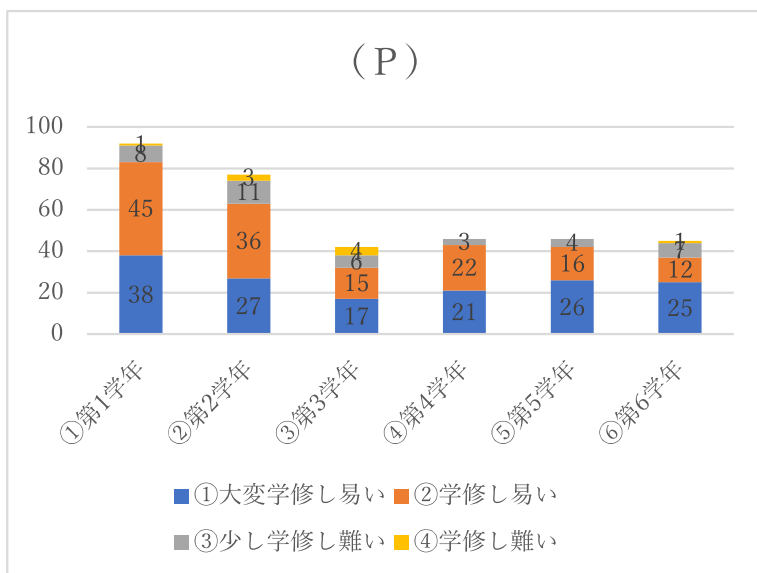
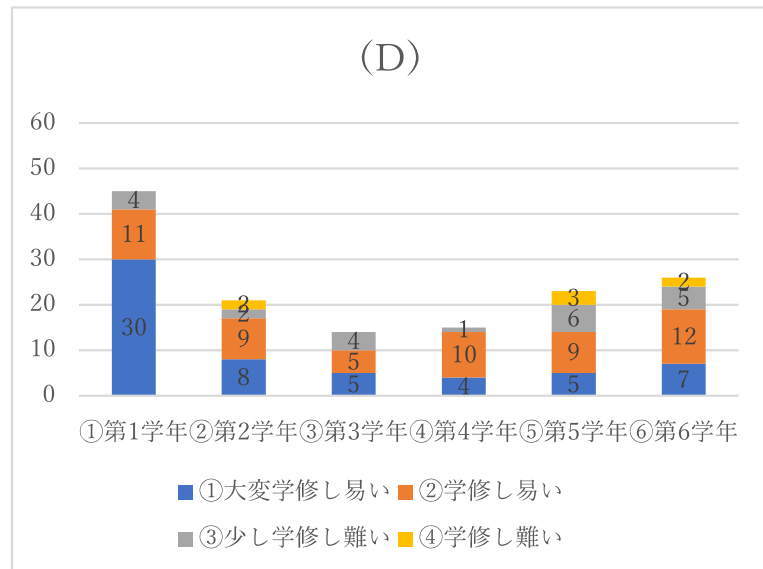
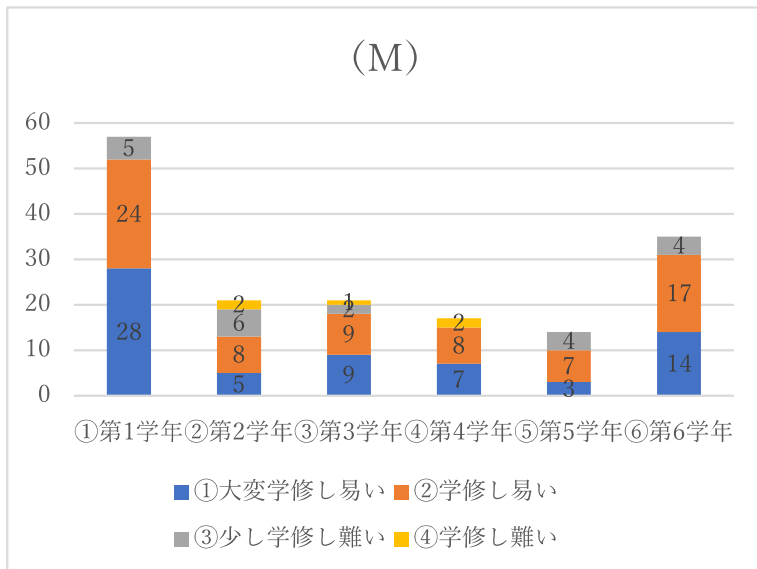
(OT)



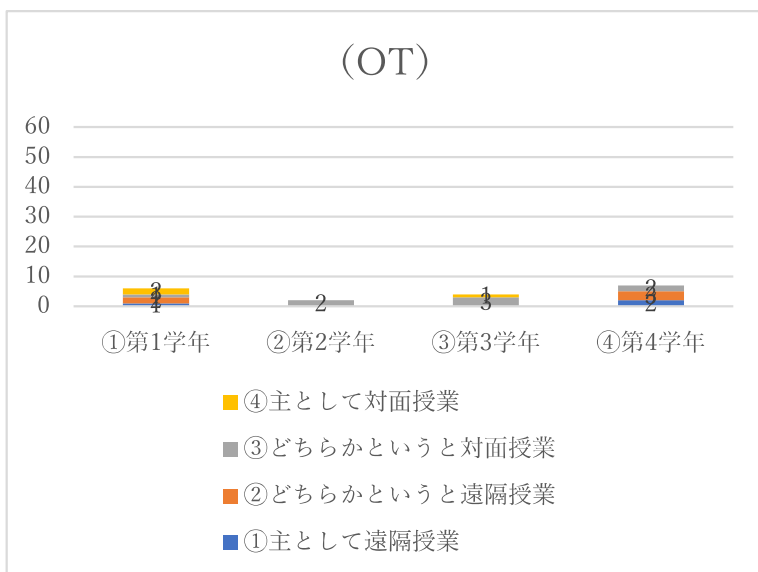
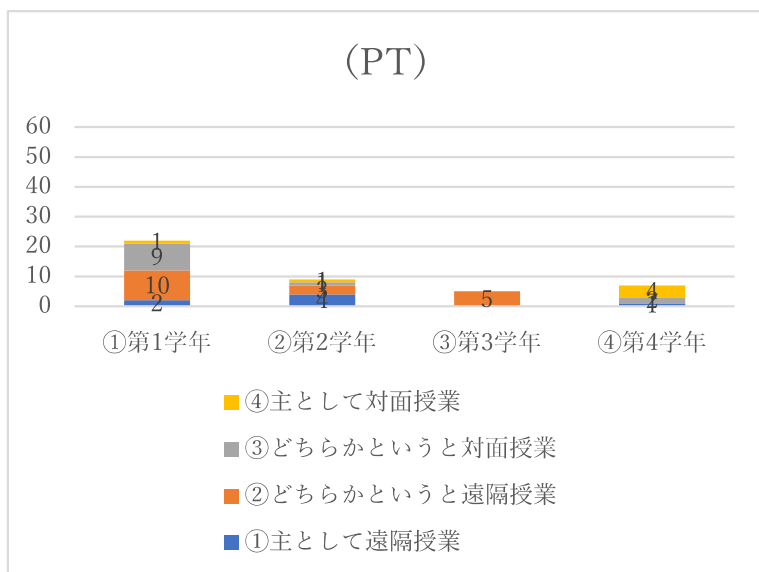
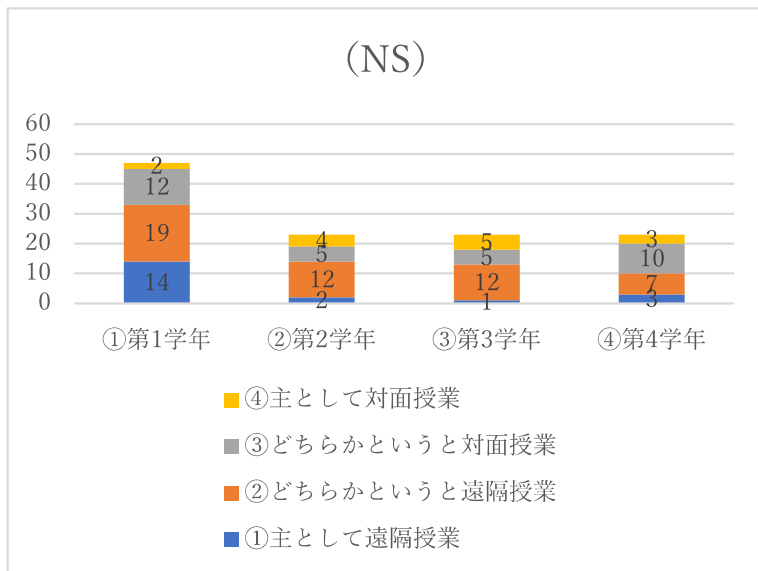
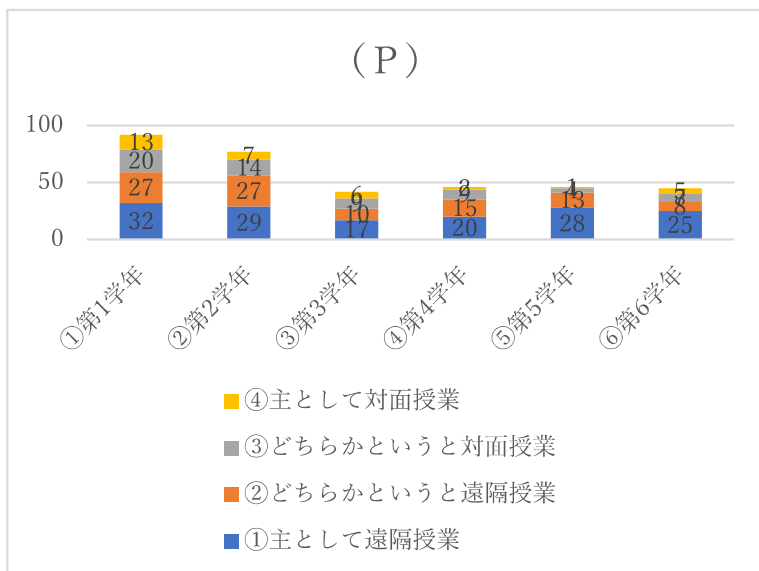
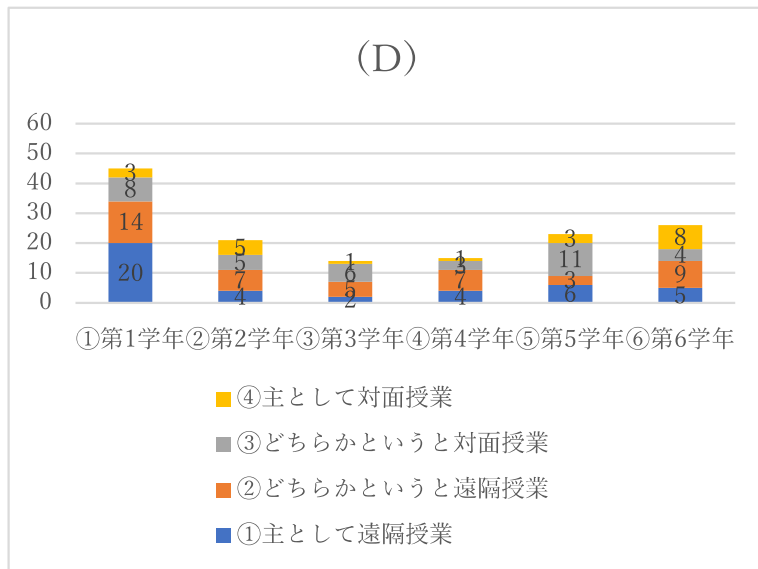
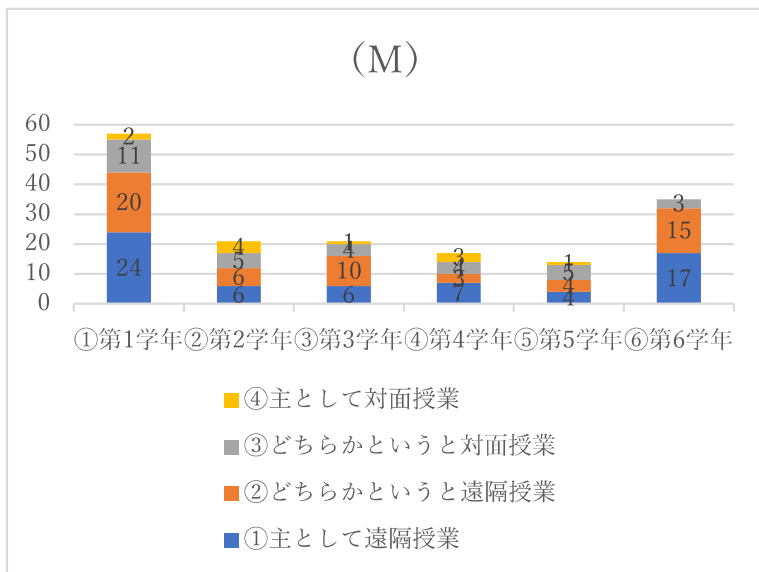
26.通信に関する問題がありましたか？



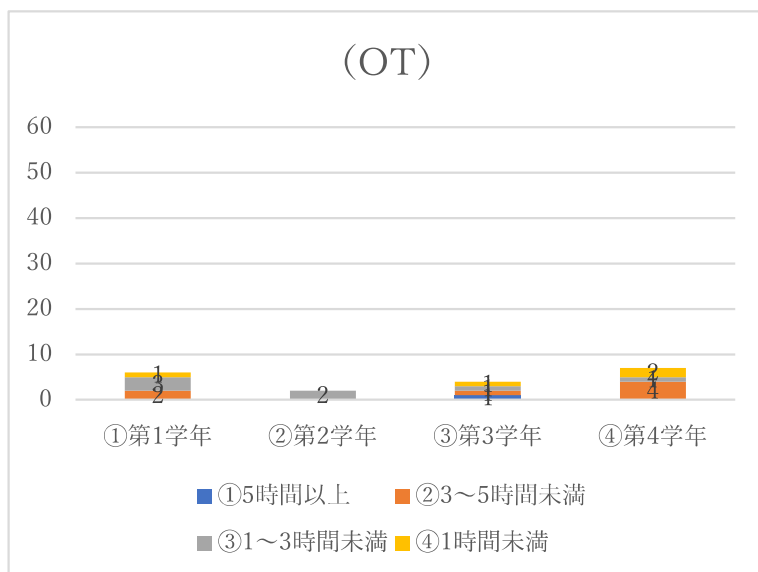
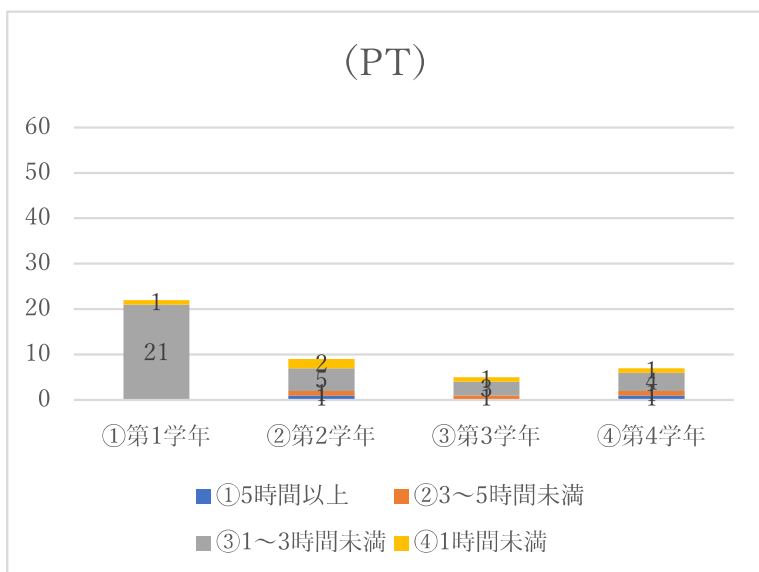
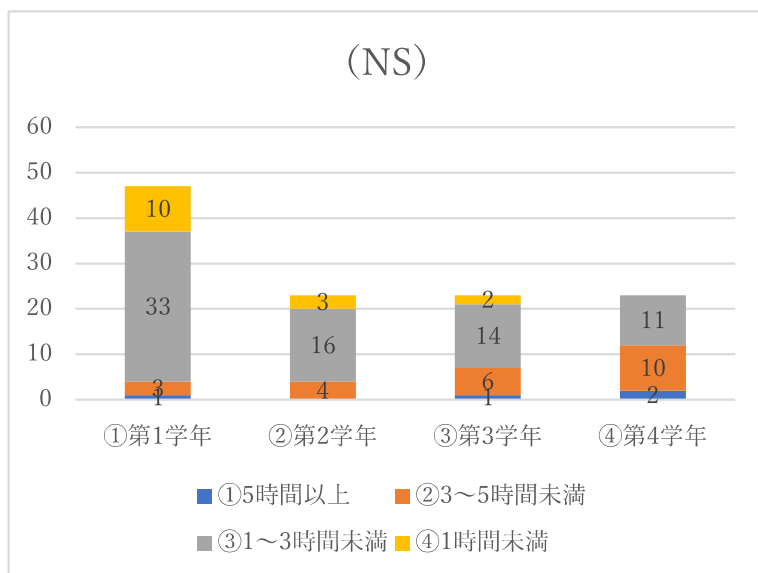
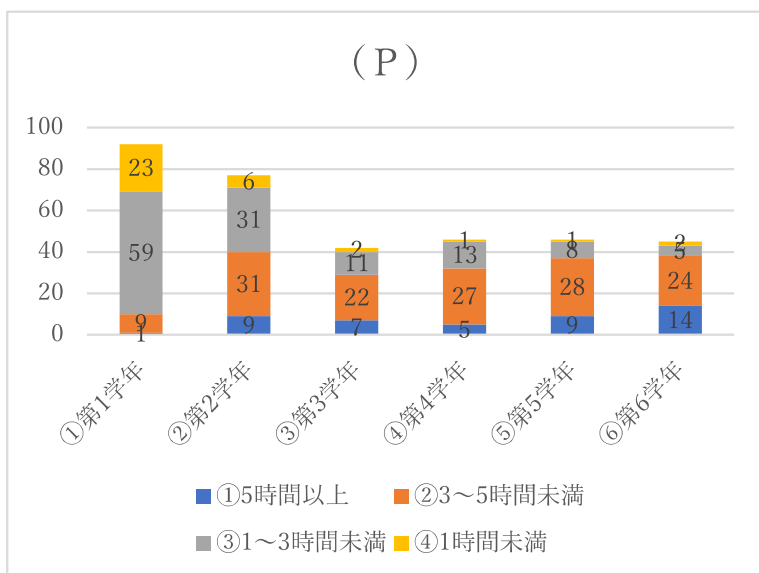
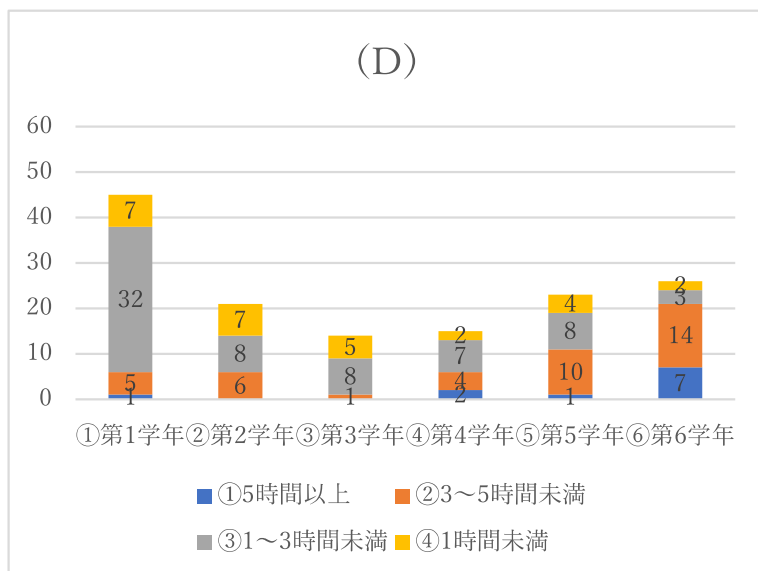
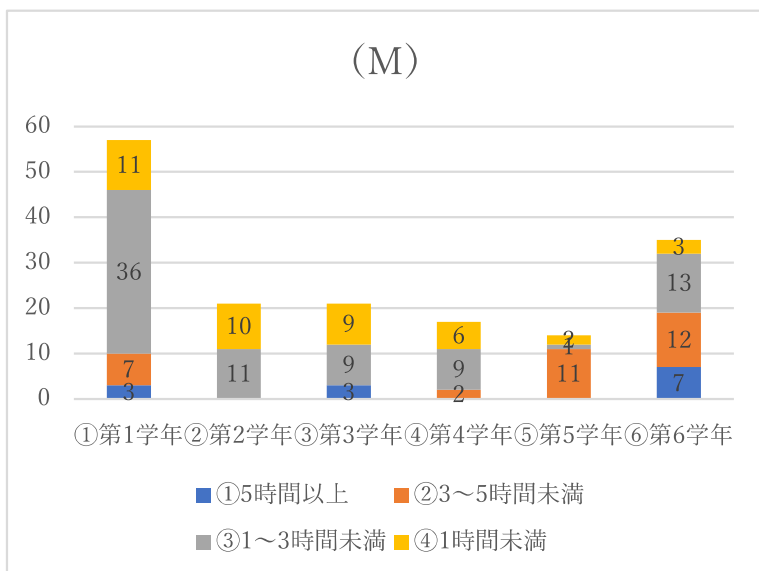
27.遠隔授業は学修し易かったですか？



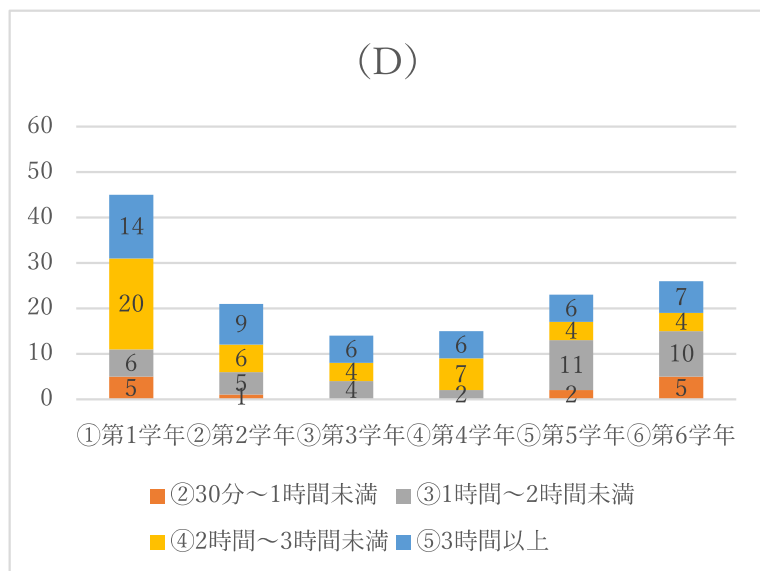
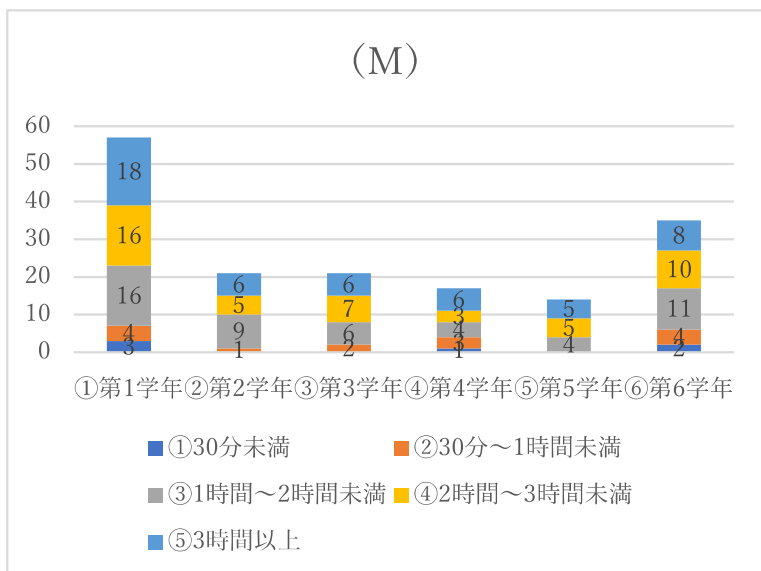
28.遠隔授業と通常の対面授業のどちらが学修し易かったですか？



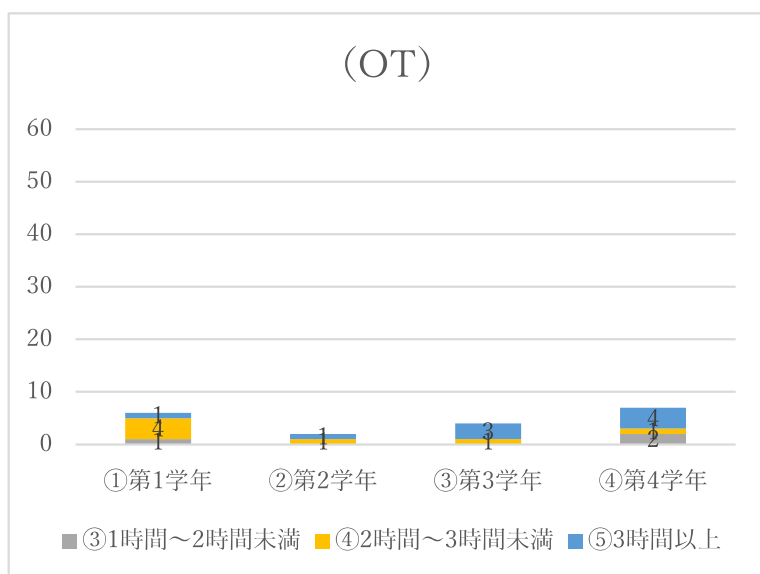
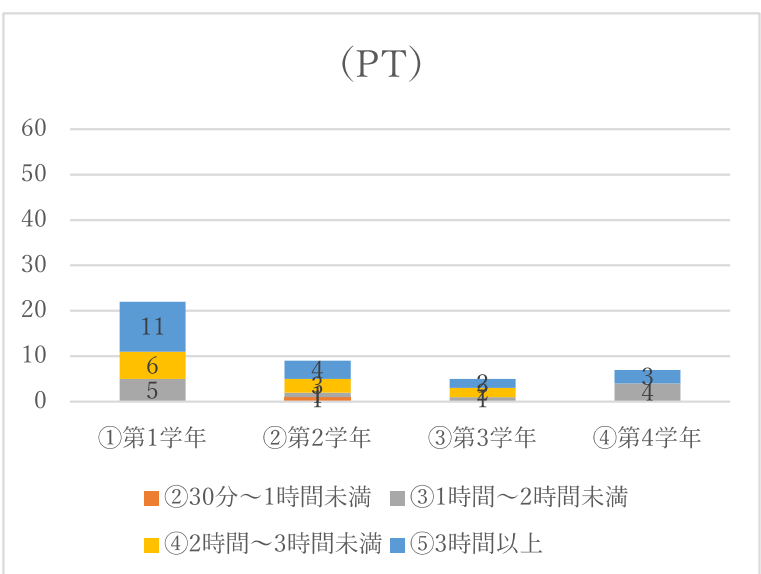
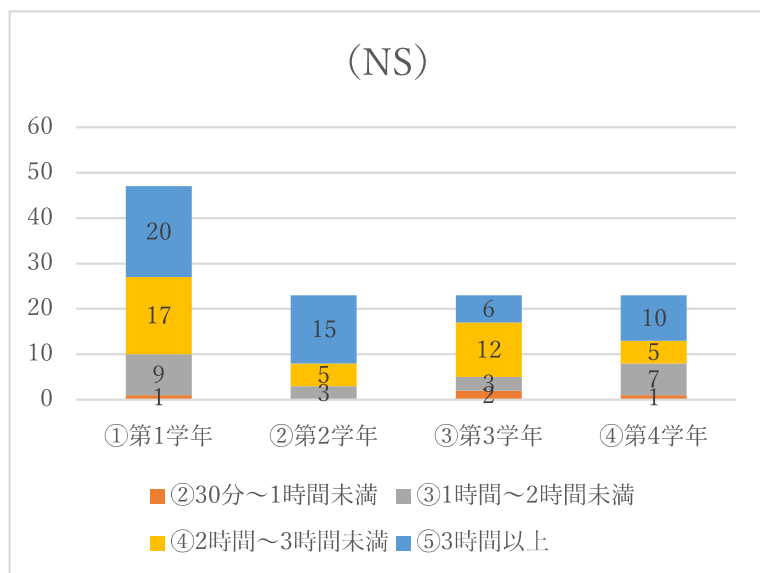
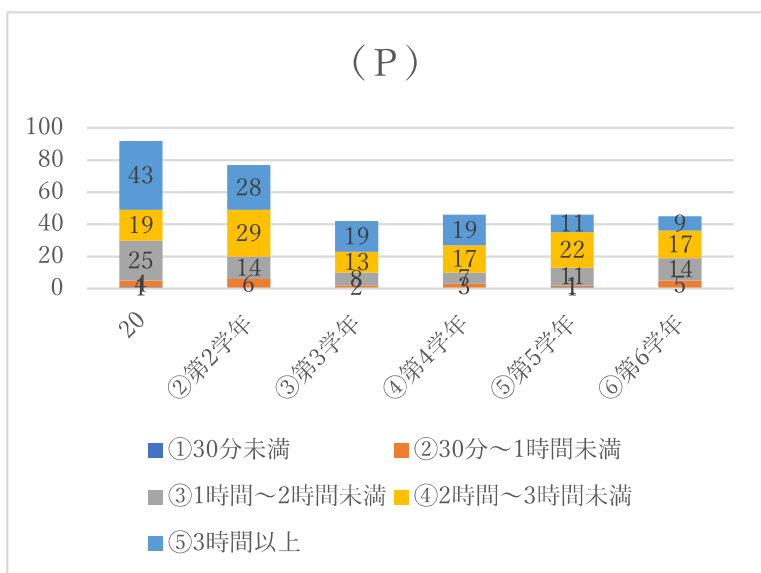
29.遠隔授業の視聴時間は1日当たりどのくらい時間を要しましたか(費やしましたか)?



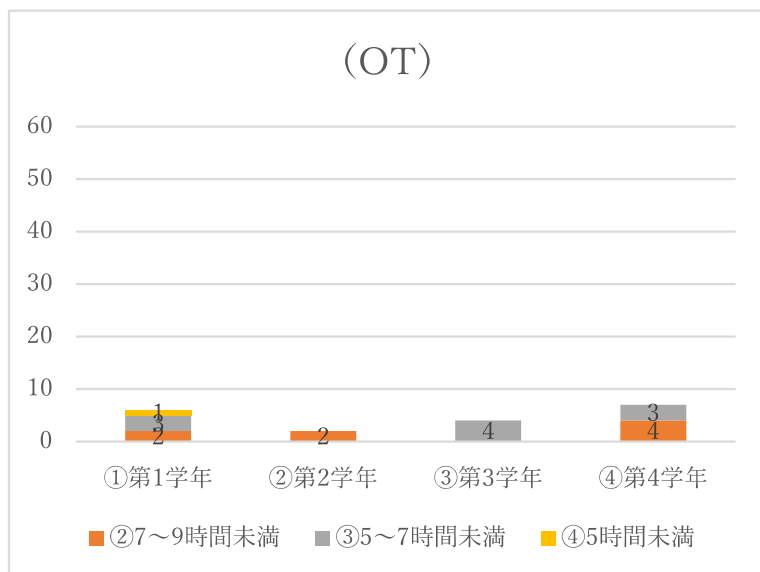
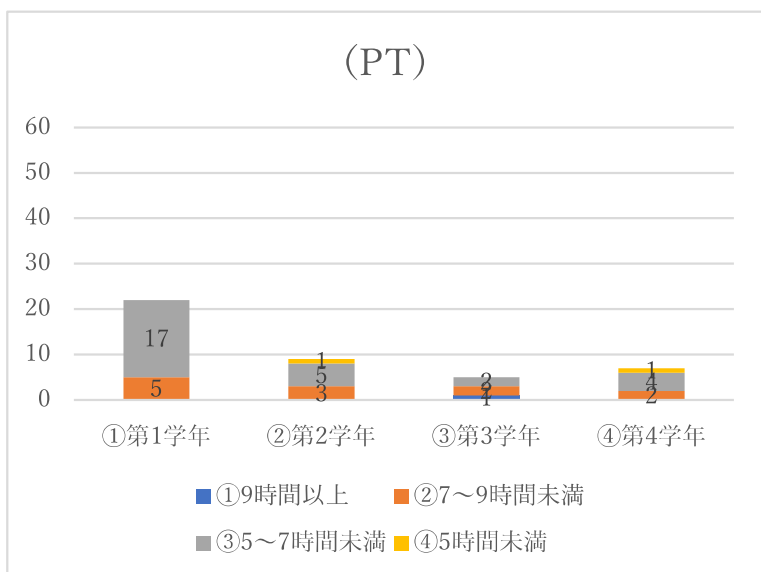
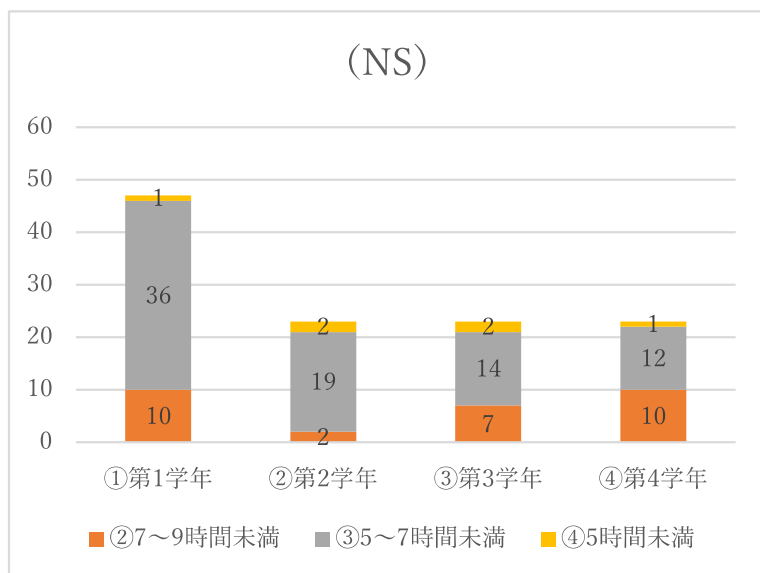
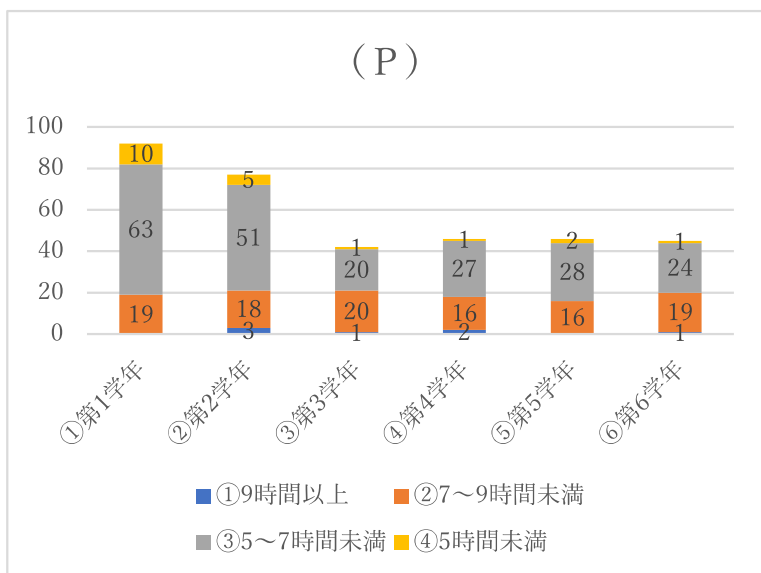
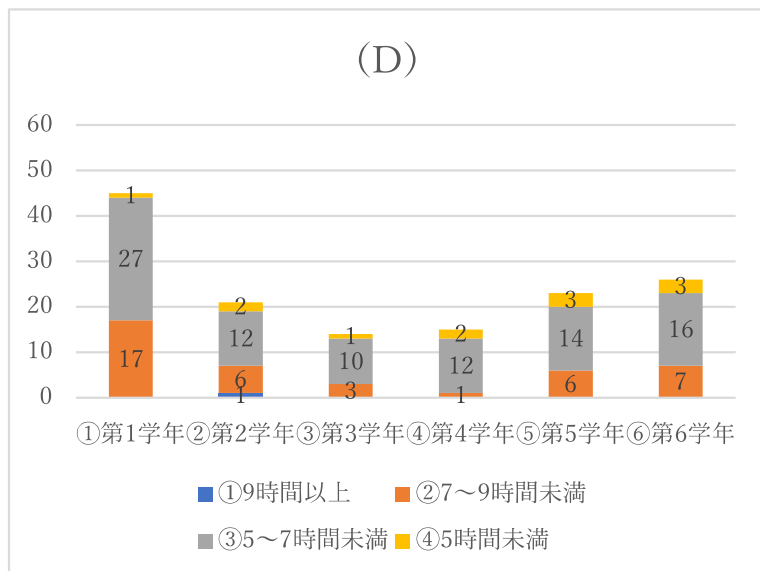
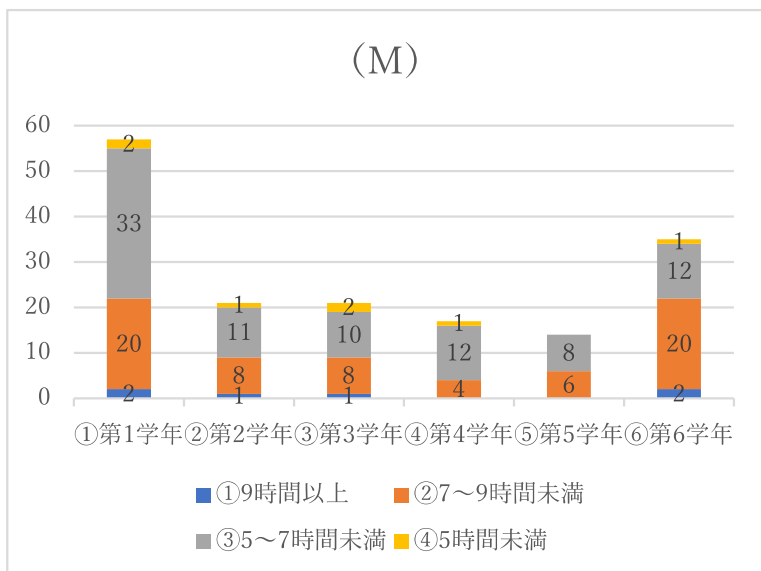
30.LINE、YouTube、オンラインゲーム等、インターネットに接続し提供されているサービスを（平均的な一日



あたり) どれくらい利用しますか？

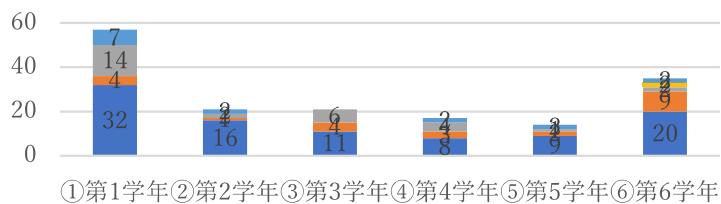


31.睡眠時間は1日あたりどれくらいですか？



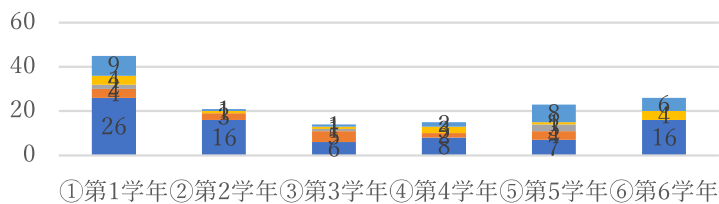
32.部活に所属していますか？

(M)



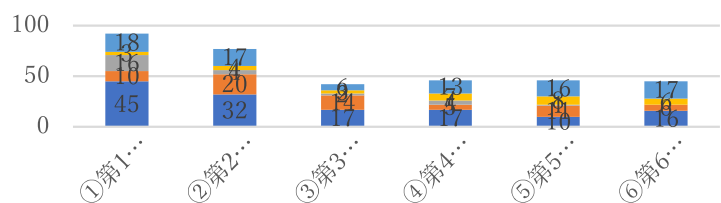
- ⑤所属していない
- ④以前所属していたが辞めた
- ③両方に所属している
- ②文化系部活に所属している
- ①運動系部活に所属している

(D)



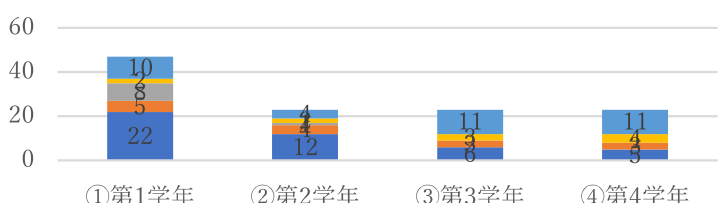
- ⑤所属していない
- ④以前所属していたが辞めた
- ③両方に所属している
- ②文化系部活に所属している
- ①運動系部活に所属している

(P)



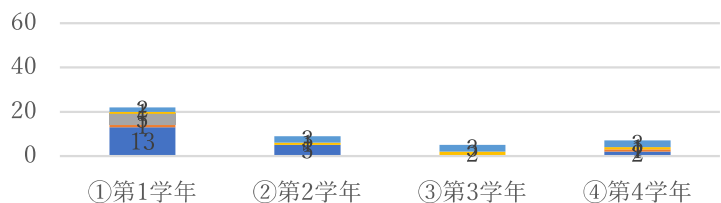
- ⑤所属していない
- ④以前所属していたが辞めた
- ③両方に所属している
- ②文化系部活に所属している
- ①運動系部活に所属している

(NS)



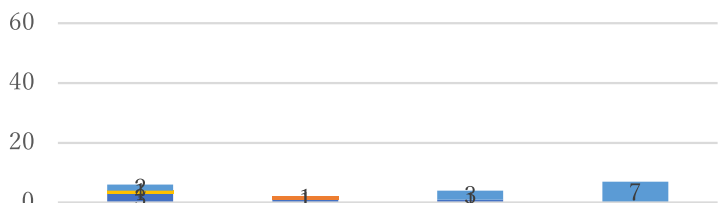
- ⑤所属していない
- ④以前所属していたが辞めた
- ③両方に所属している
- ②文化系部活に所属している
- ①運動系部活に所属している

(PT)



- ⑤所属していない
- ④以前所属していたが辞めた
- ③両方に所属している
- ②文化系部活に所属している
- ①運動系部活に所属している

(OT)



- ⑤所属していない
- ④以前所属していたが辞めた
- ③両方に所属している
- ②文化系部活に所属している
- ①運動系部活に所属している

33.アルバイトはどのくらいしていますか？（長期休暇以外で最も多い時期）

