

2025年度学修アンケート回答状況

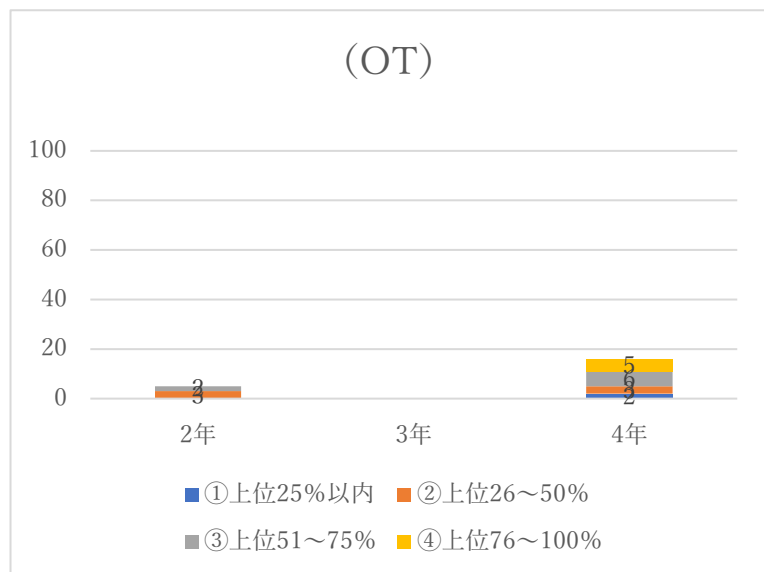
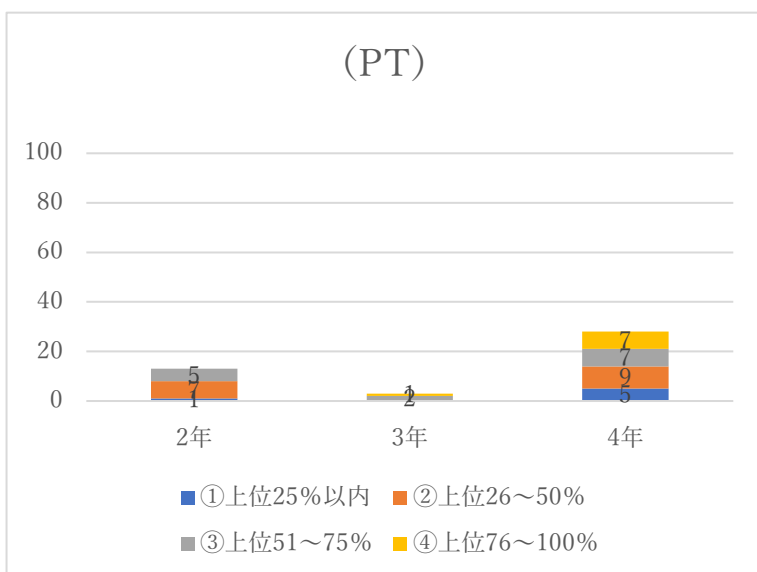
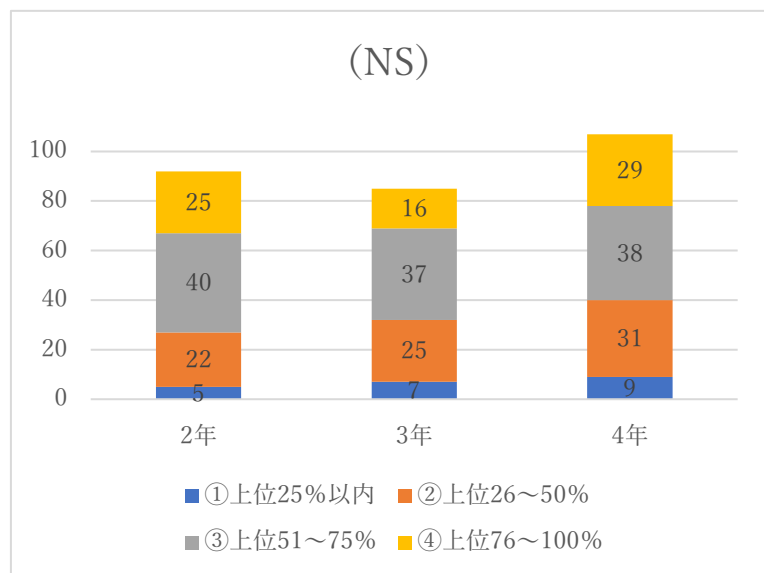
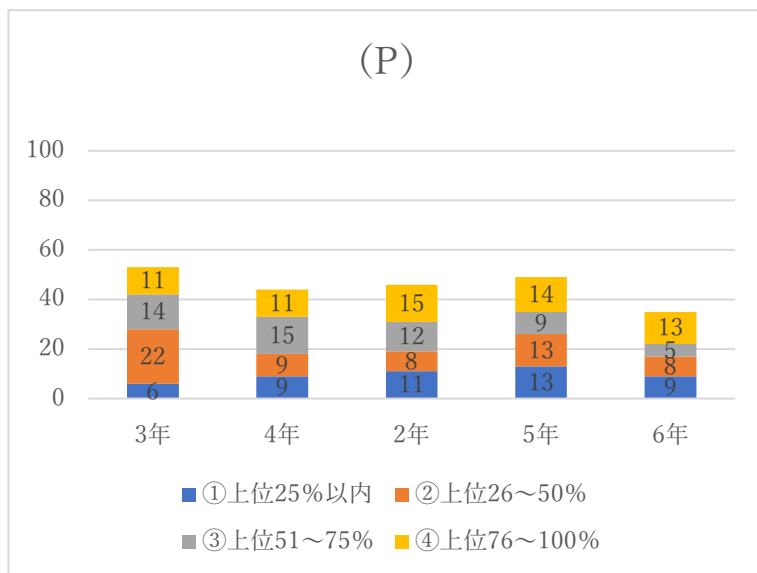
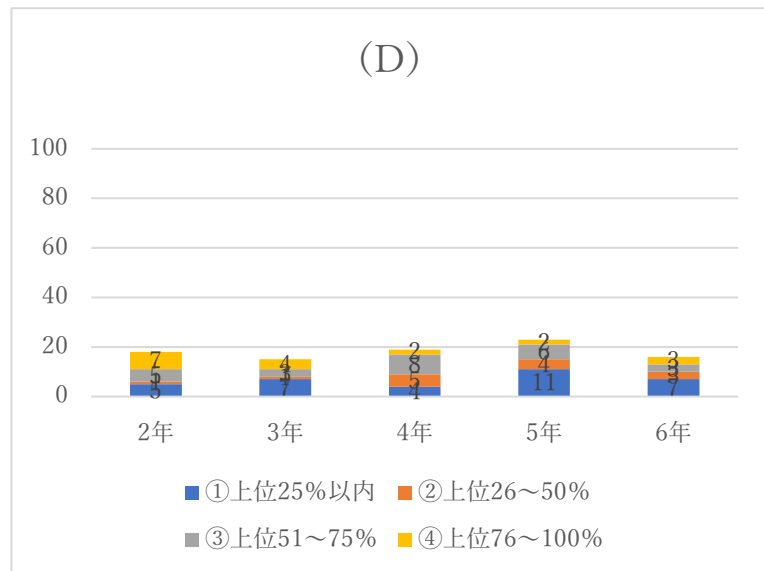
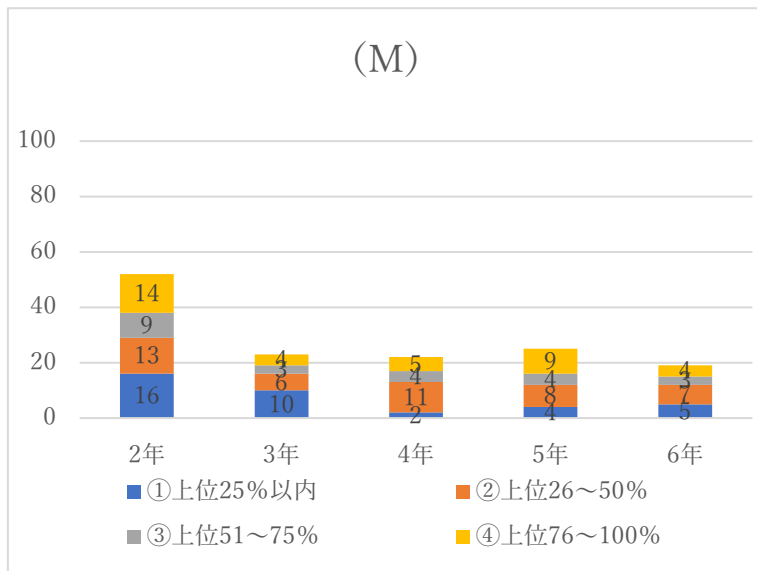
回答期間：2025年12月27日～2026年2月28日

対象：全学部生

実施方法：Googleフォーム

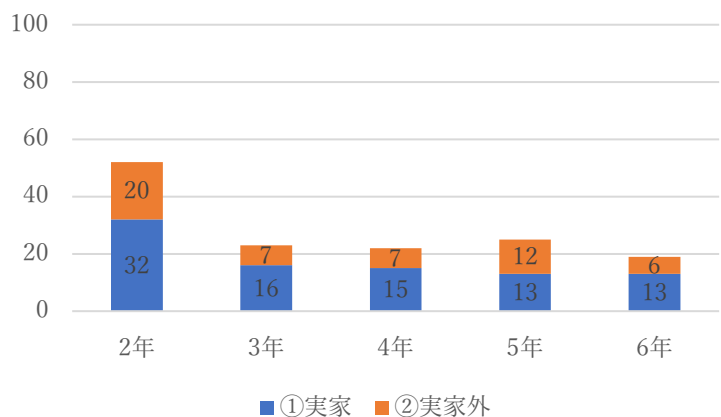
| | ①第1学年 | | | ②第2学年 | | | ③第3学年 | | | ④第4学年 | | | ⑤第5学年 | | | ⑥第6学年 | | | 総計 | | |
|-----------------|-------|-----|------|-------|-----|-----|-------|-----|-----|-------|-----|------|-------|-----|-----|-------|-----|-----|-------|-------|-----|
| | 現員 | 回答数 | 回答率 | 現員 | 回答数 | 回答率 | 現員 | 回答数 | 回答率 | 現員 | 回答数 | 回答率 | 現員 | 回答数 | 回答率 | 現員 | 回答数 | 回答率 | 現員 | 回答数 | 回答率 |
| 医学部 | 131 | 124 | 95% | 142 | 52 | 37% | 128 | 23 | 18% | 133 | 22 | 17% | 115 | 25 | 22% | 123 | 19 | 15% | 772 | 265 | 34% |
| 歯学部 | 100 | 96 | 96% | 113 | 18 | 16% | 103 | 15 | 15% | 101 | 19 | 19% | 86 | 23 | 27% | 99 | 16 | 16% | 602 | 187 | 31% |
| 薬学部 | 216 | 208 | 96% | 229 | 46 | 20% | 225 | 53 | 24% | 182 | 44 | 24% | 173 | 49 | 28% | 172 | 35 | 20% | 1,197 | 435 | 36% |
| 看護学科 | 106 | 102 | 96% | 102 | 92 | 90% | 105 | 85 | 81% | 115 | 107 | 93% | | | | | | | 428 | 386 | 90% |
| 理学療法学科・リハビリ科学専攻 | 44 | 43 | 98% | 41 | 13 | 32% | 35 | 3 | 9% | 32 | 28 | 88% | | | | | | | 152 | 87 | 57% |
| 作業療法学科・リハビリ作業専攻 | 12 | 12 | 100% | 13 | 5 | 38% | 11 | 0 | 0% | 16 | 16 | 100% | | | | | | | 52 | 33 | 63% |
| 総計 | 609 | 585 | 96% | 640 | 226 | 35% | 607 | 179 | 29% | 579 | 236 | 41% | 374 | 97 | 26% | 394 | 70 | 18% | 3,203 | 1,393 | 43% |

4.成績は学年の中で、どのくらいだと思いますか？

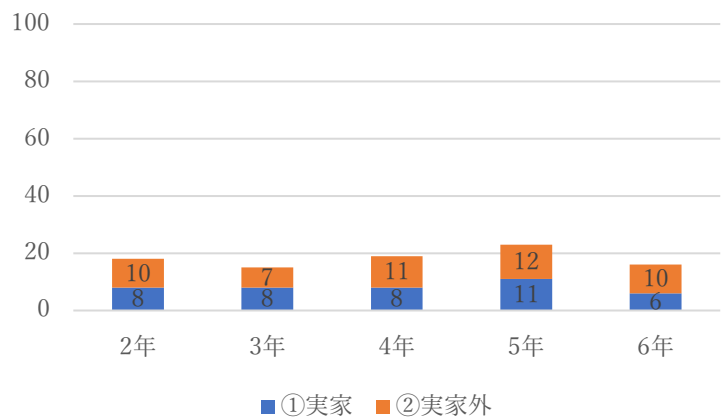


5.実家通学ですか？

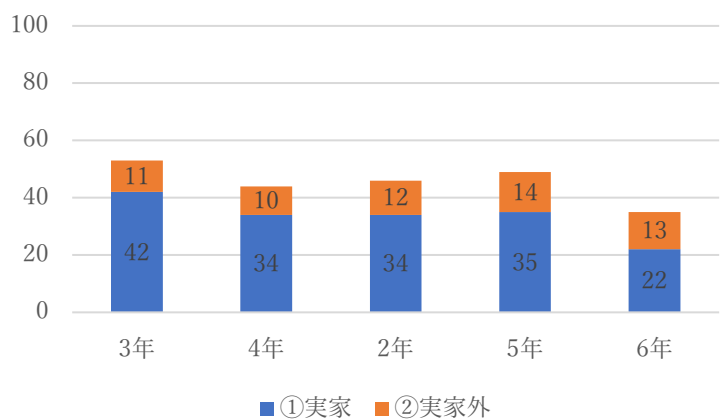
(M)



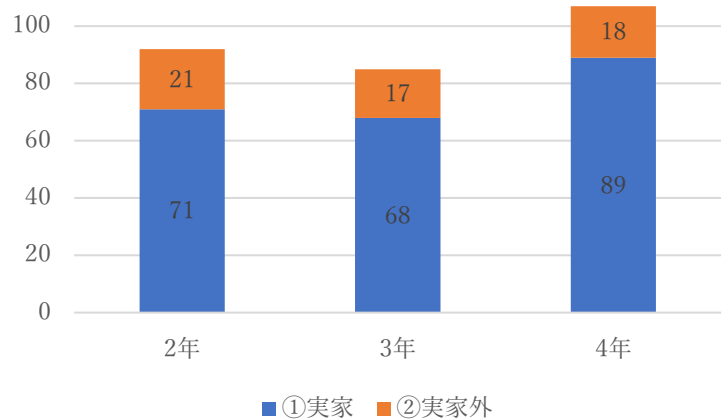
(D)



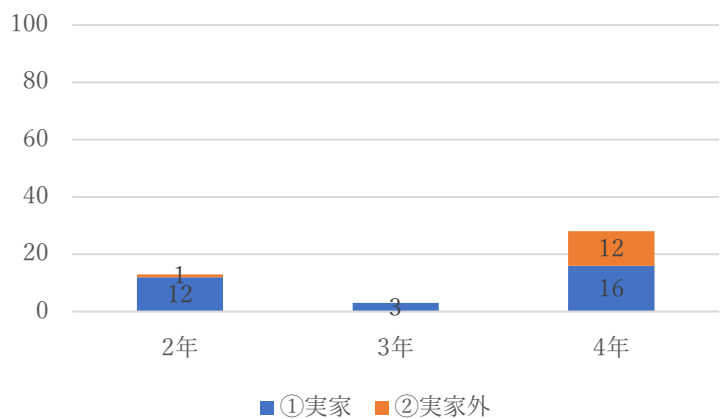
(P)



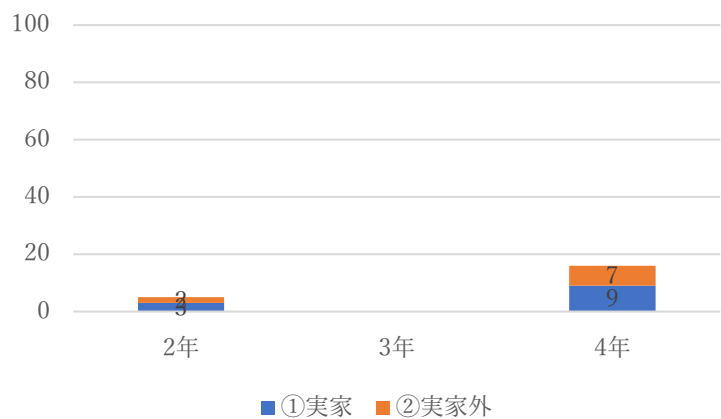
(NS)



(PT)

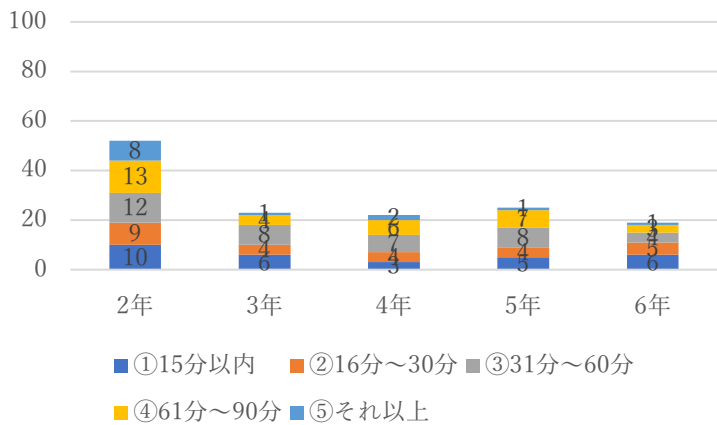


(OT)

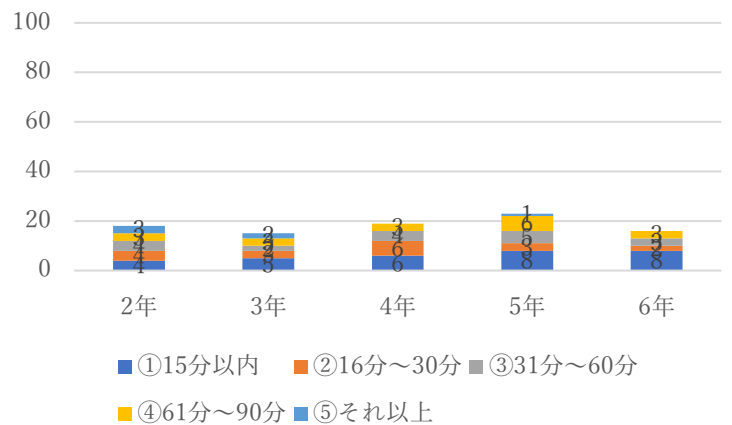


6.通学時間(片道)はどのくらいですか？

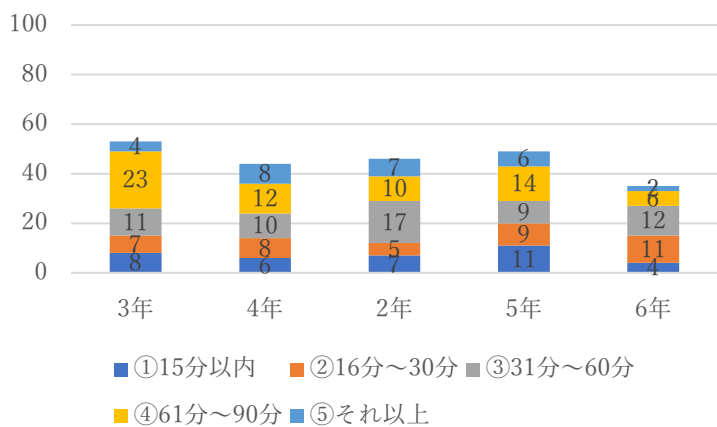
(M)



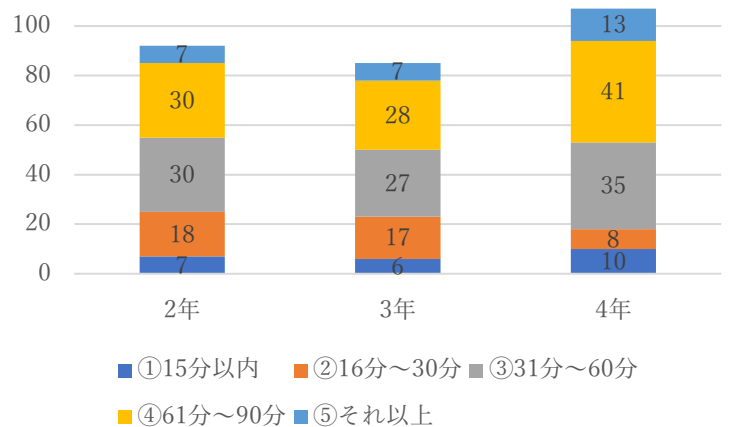
(D)



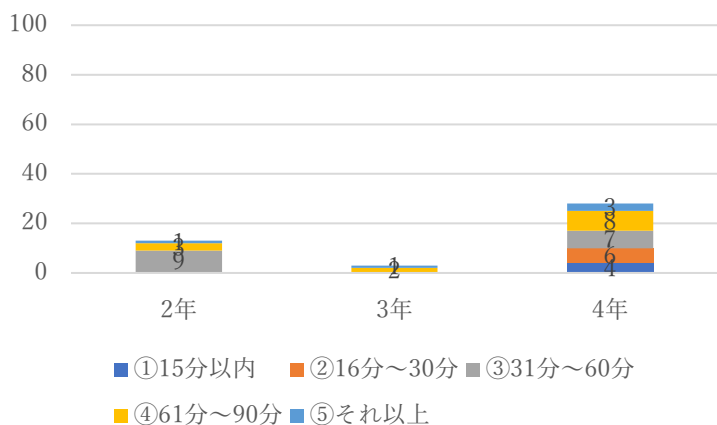
(P)



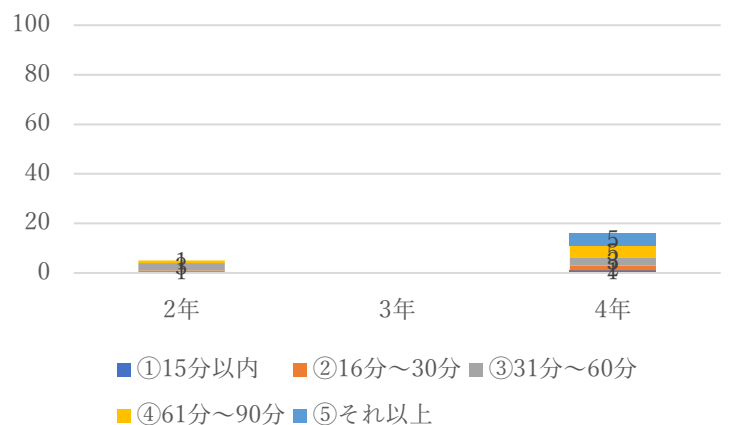
(NS)



(PT)

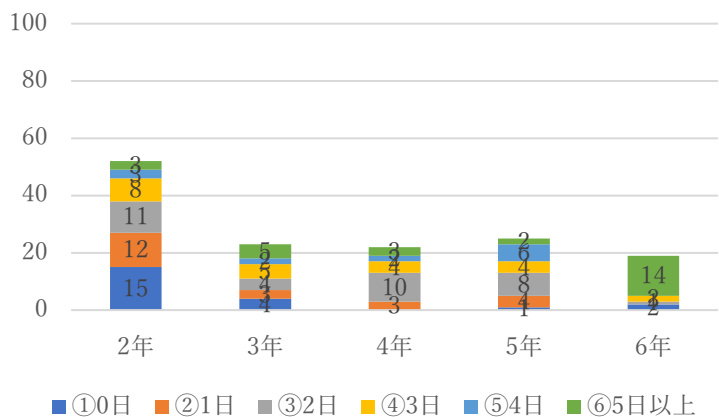


(OT)

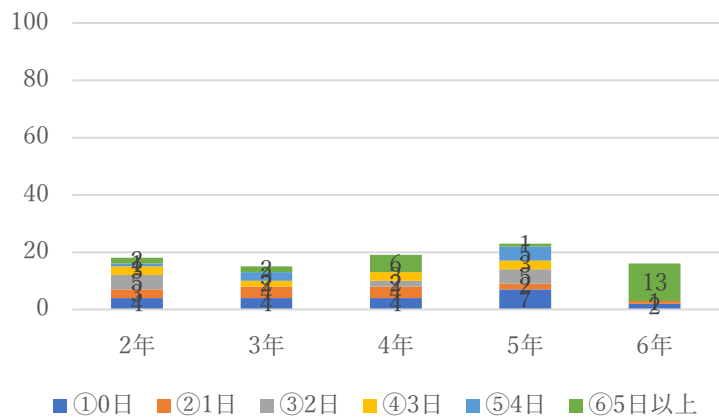


7. 普段、授業以外に、平均して週に何日程度、学修（講義の予習復習、自身の興味に関する学修等）しますか？

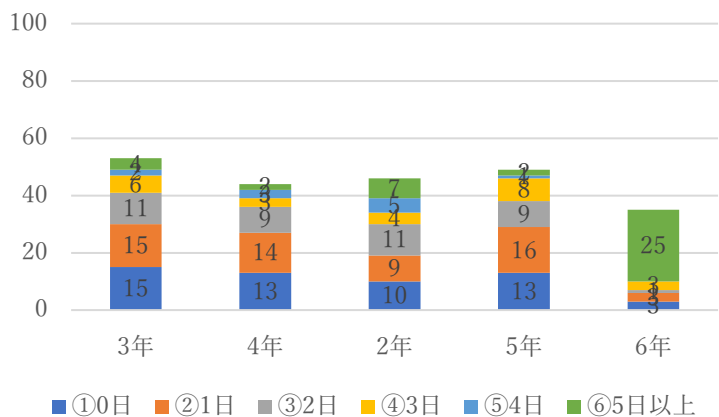
(M)



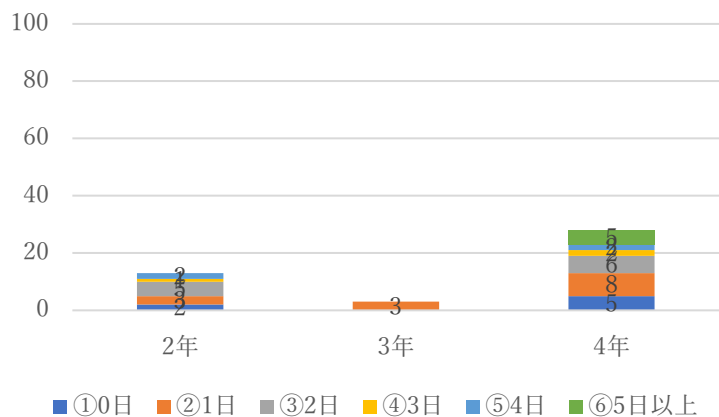
(D)



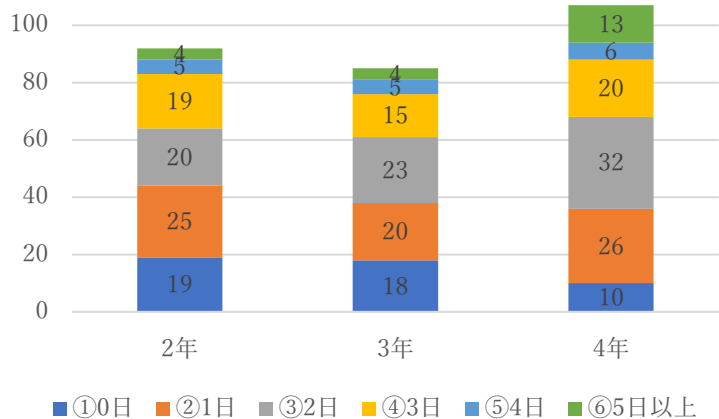
(P)



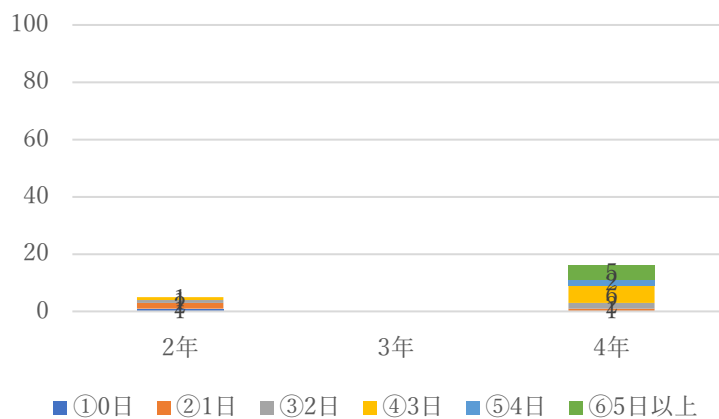
(PT)



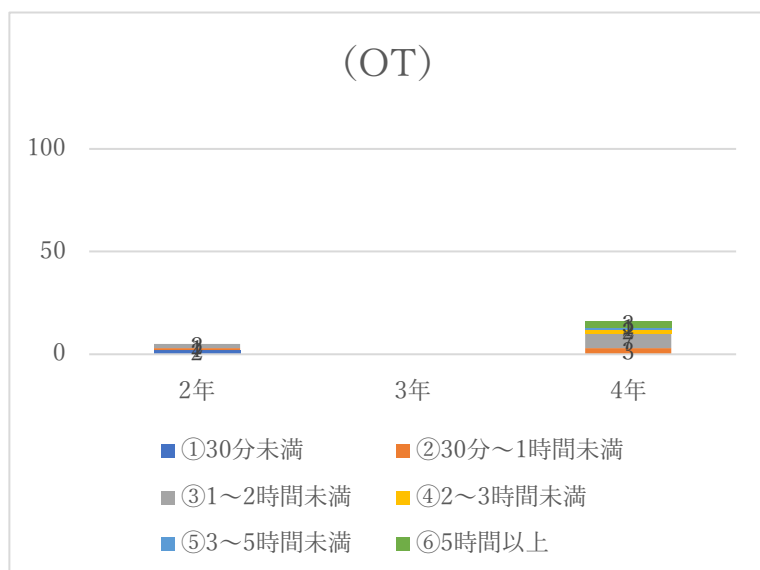
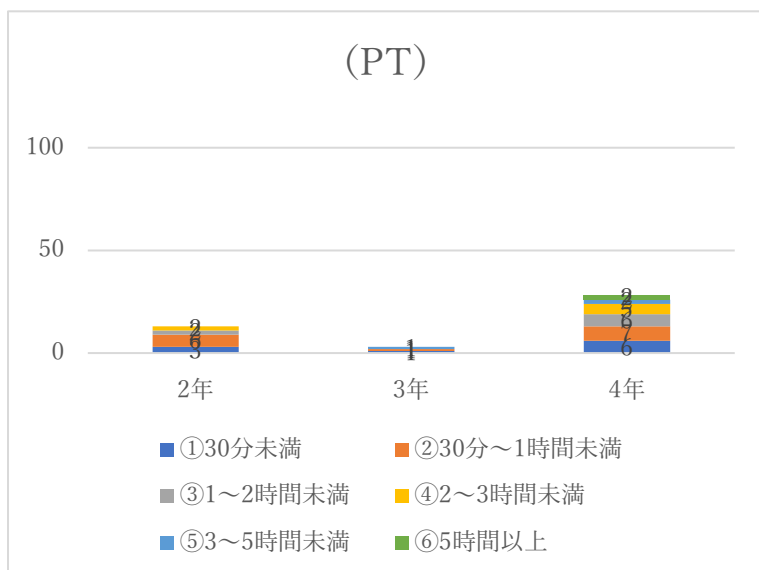
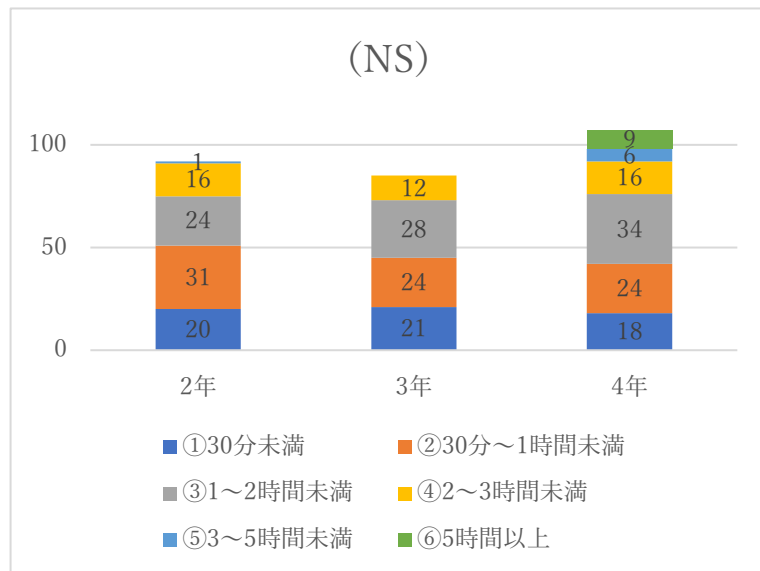
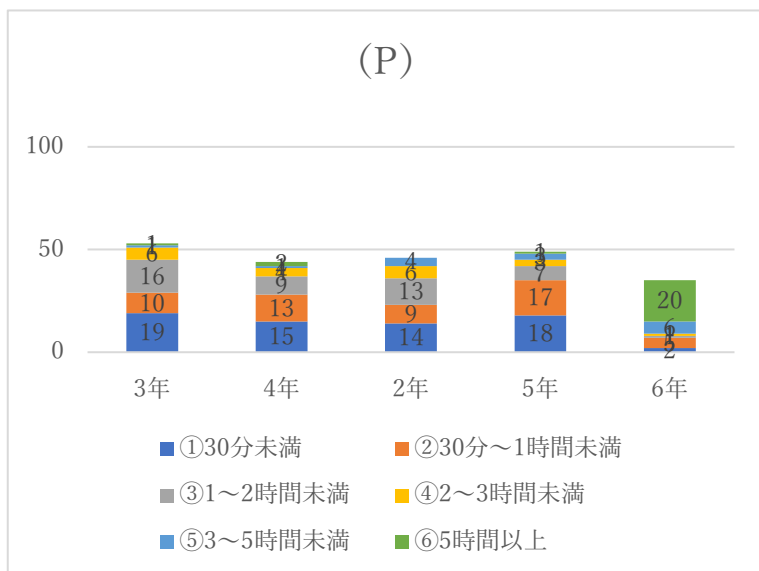
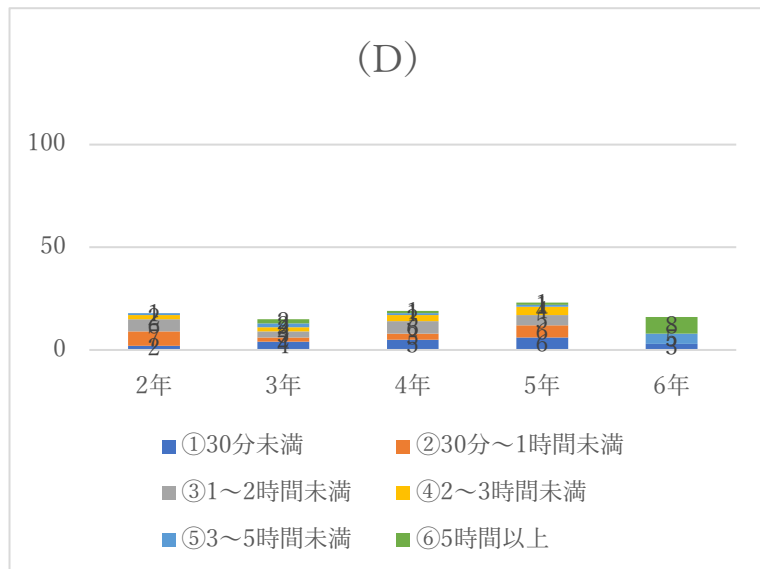
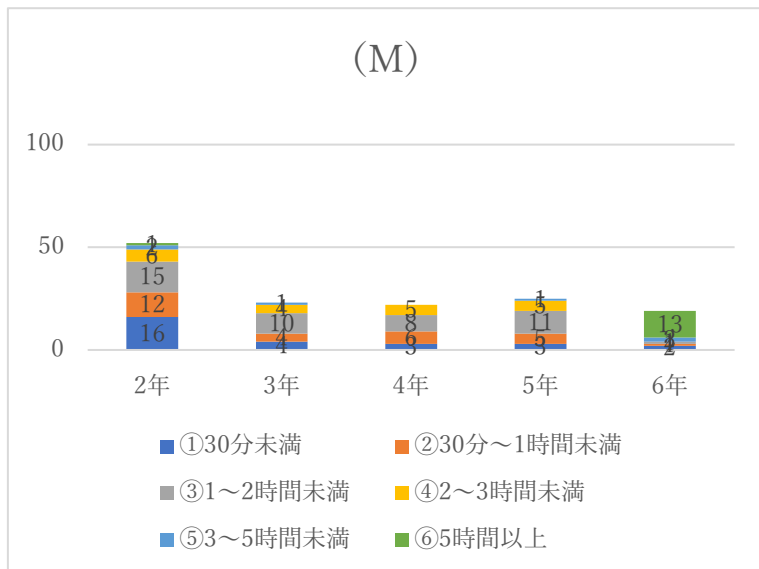
(NS)



(OT)

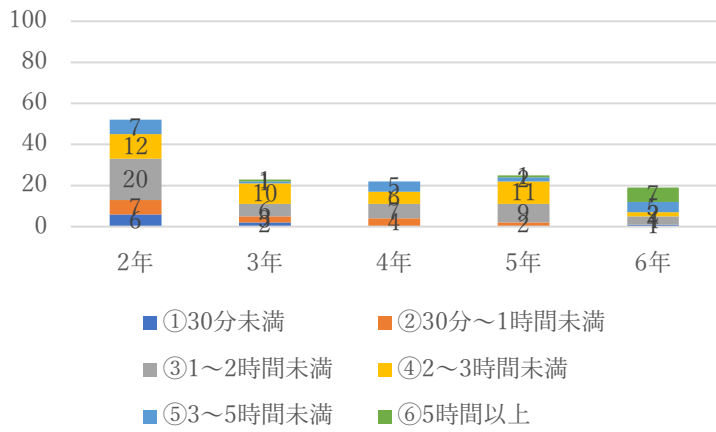


8.Q7 の学修日の1日あたりの学修時間はどのくらいですか？

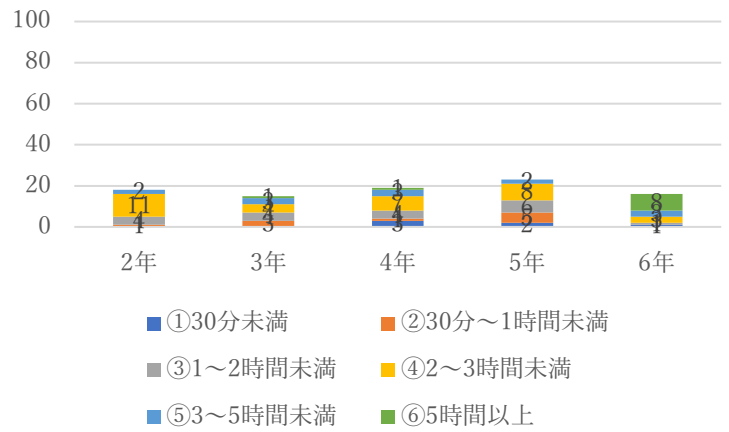


9. 普段の1日の理想的な学修時間は授業を受けている時間以外にどのくらい必要だと思いますか？

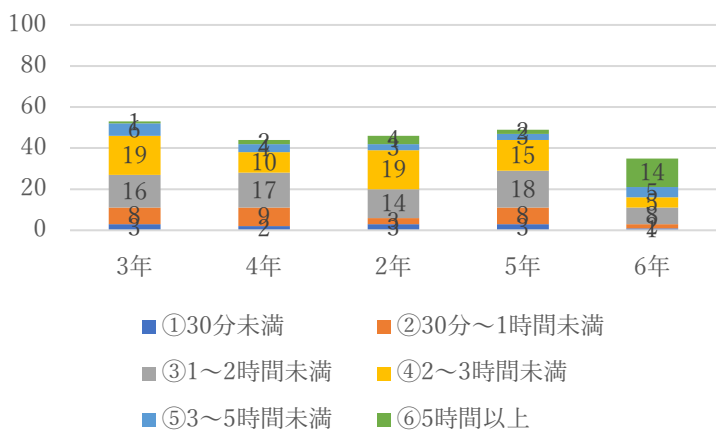
(M)



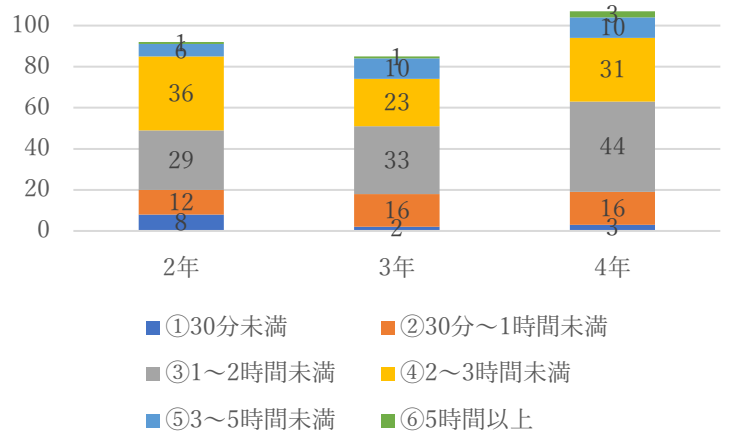
(D)



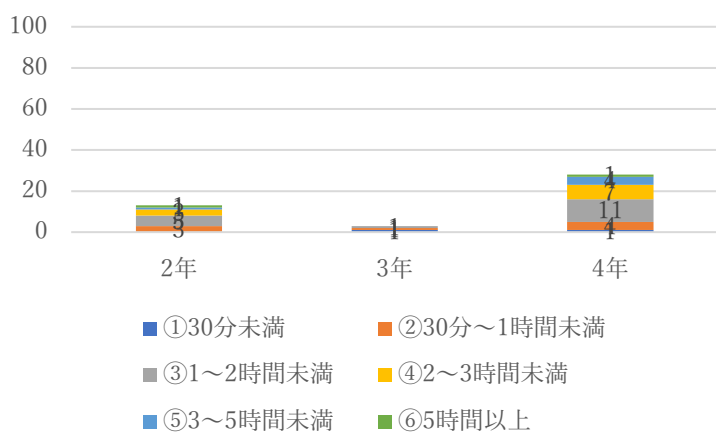
(P)



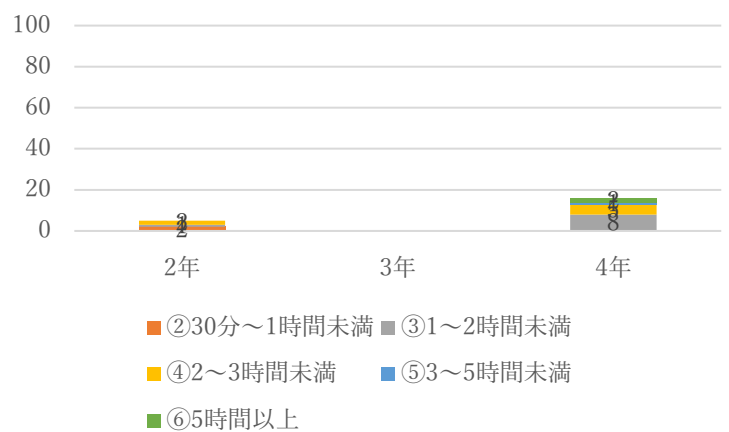
(NS)



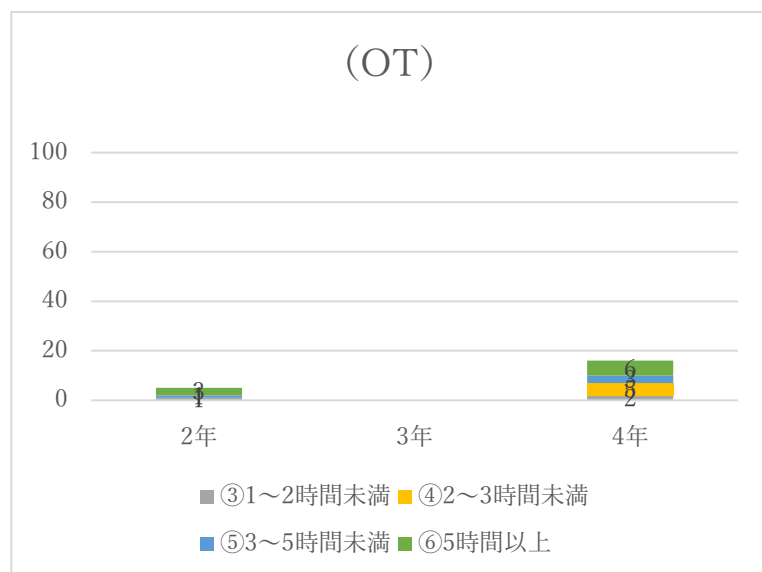
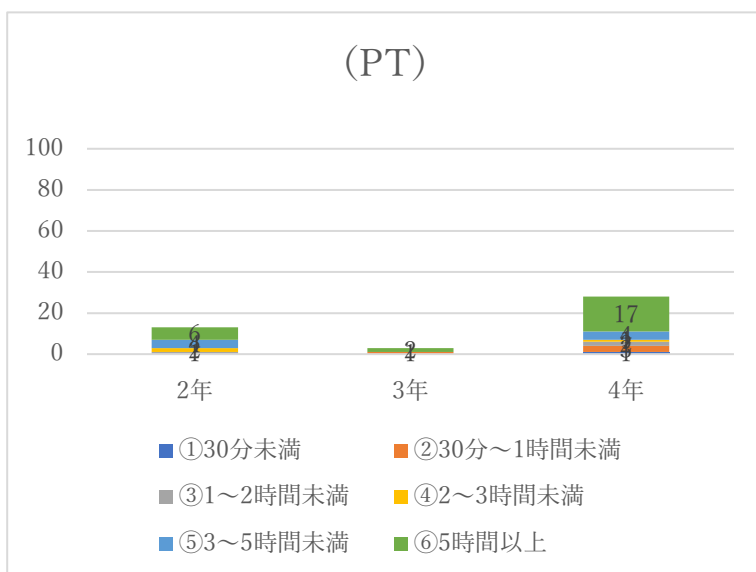
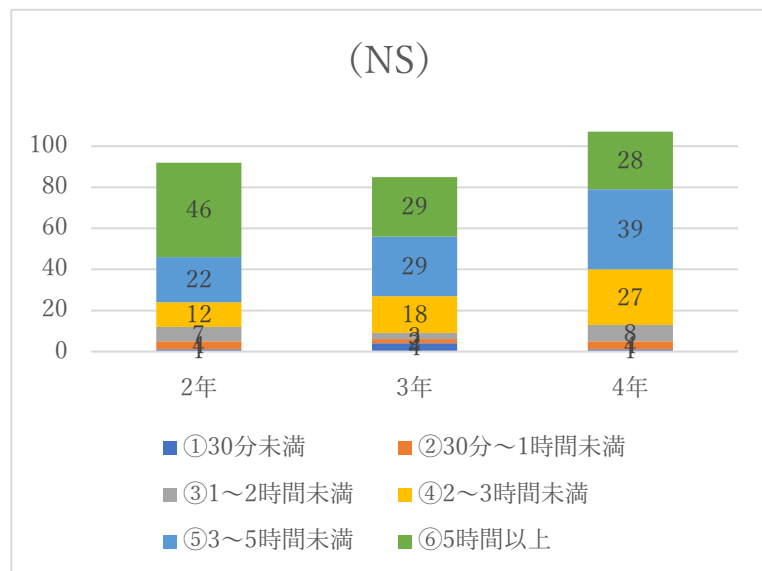
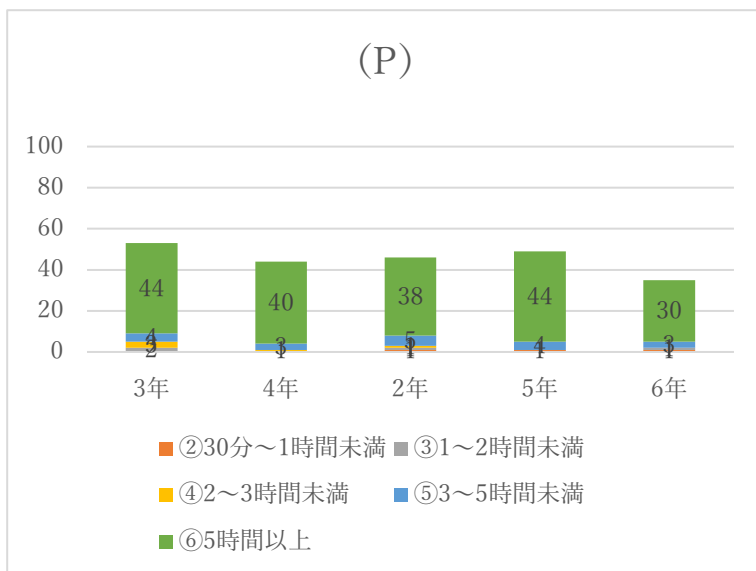
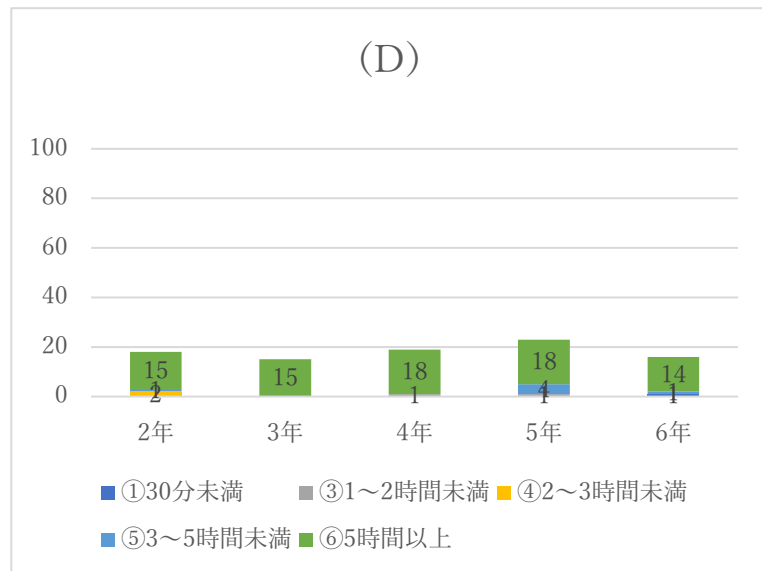
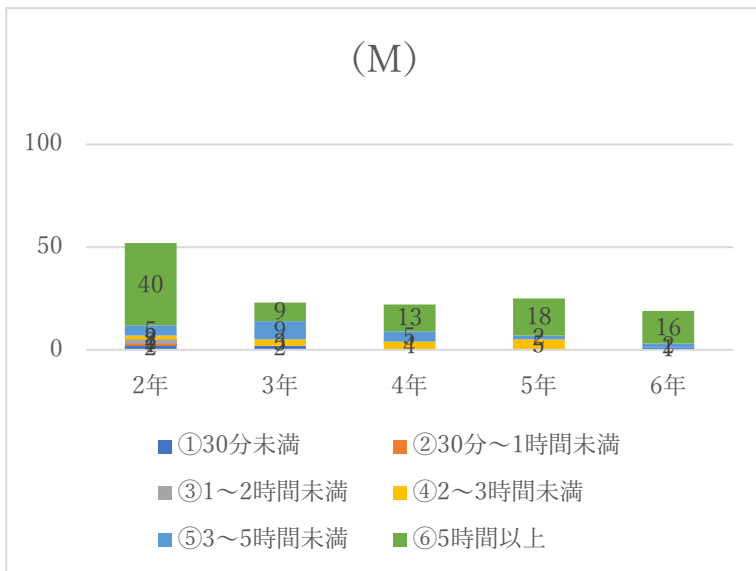
(PT)



(OT)

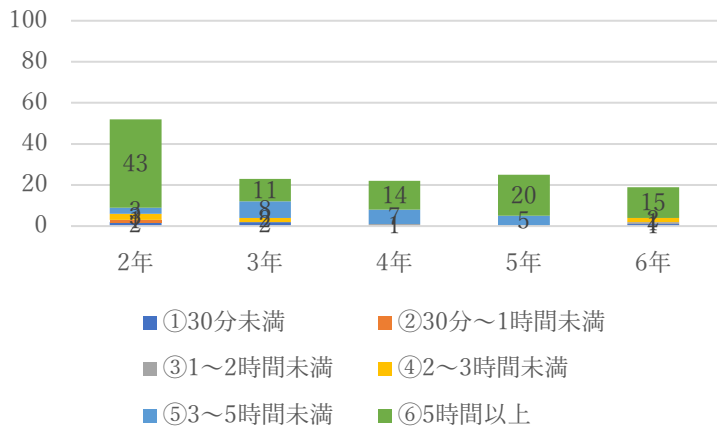


10.試験期間中の1日の学修時間はどのくらいですか？

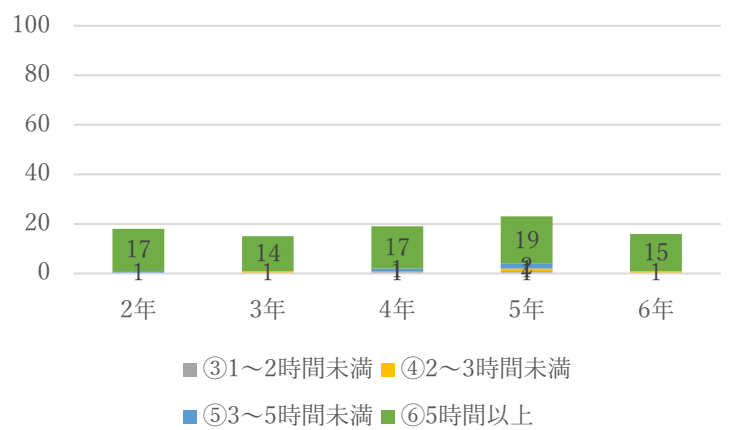


11.試験期間中の1日の理想的な学修時間はどれくらい必要だと思いますか？

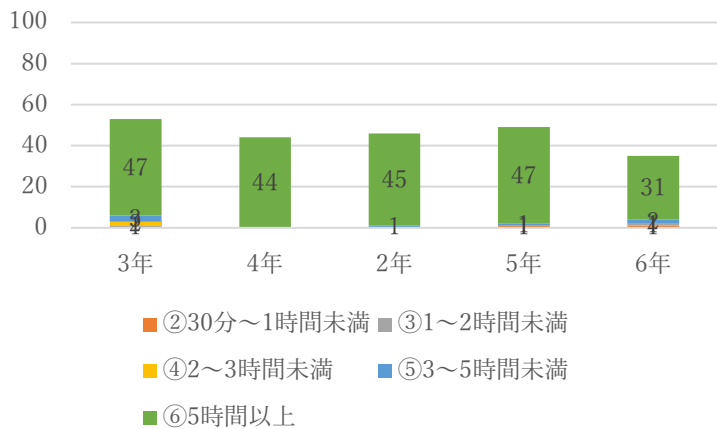
(M)



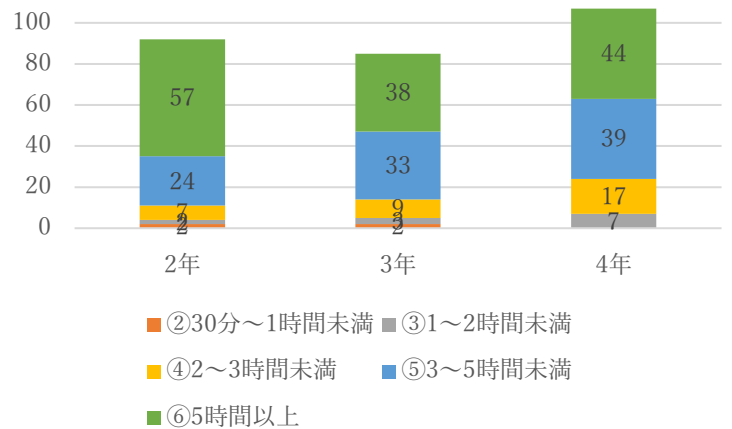
(D)



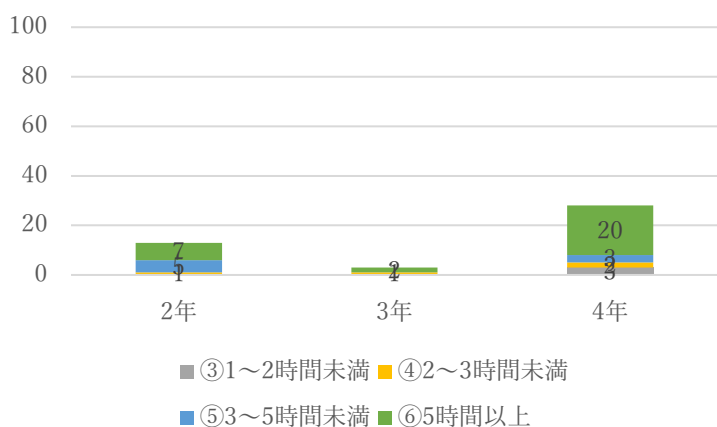
(P)



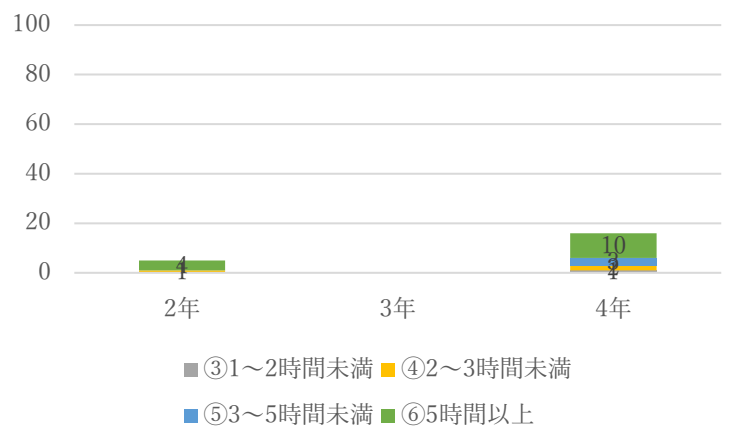
(NS)



(PT)

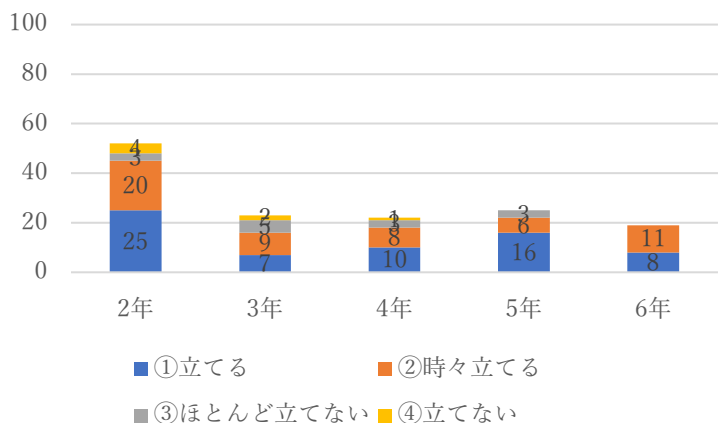


(OT)

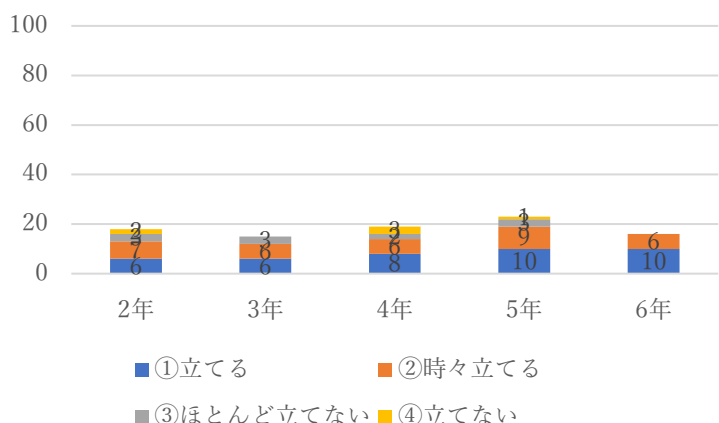


12.試験前には学修計画を立てていますか？

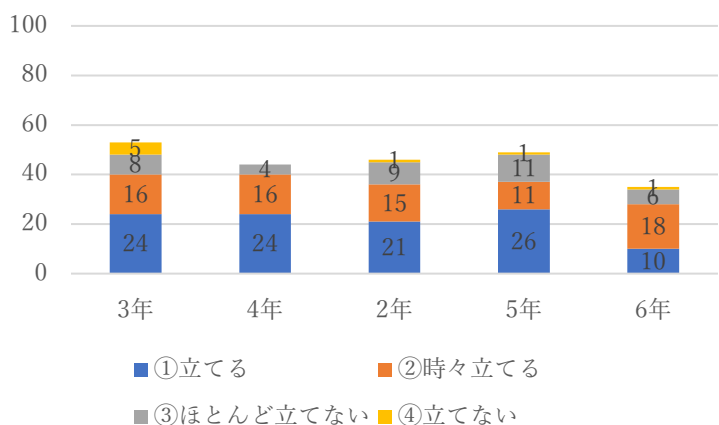
(M)



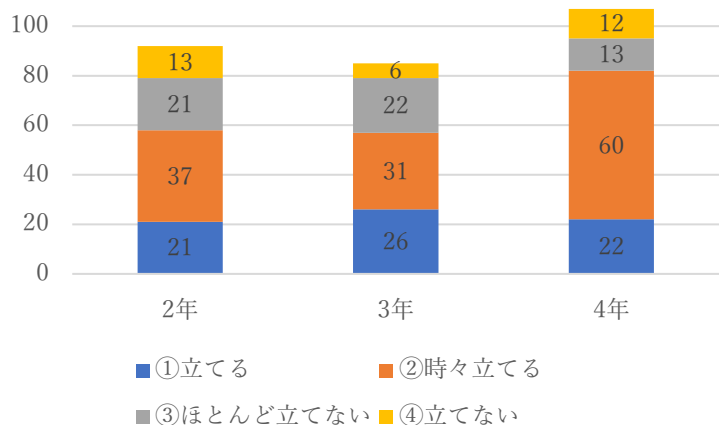
(D)



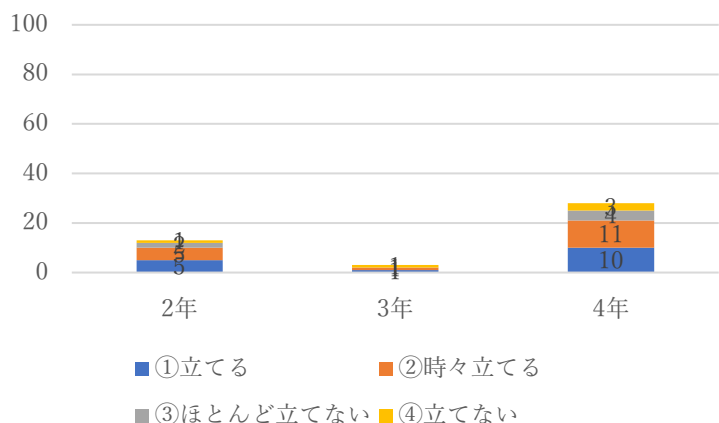
(P)



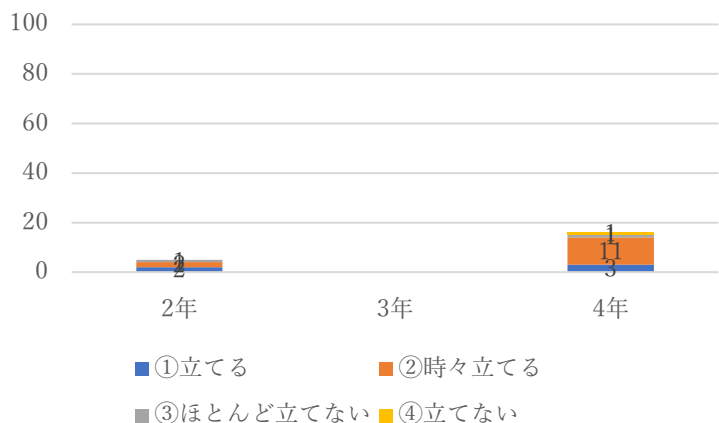
(NS)



(PT)

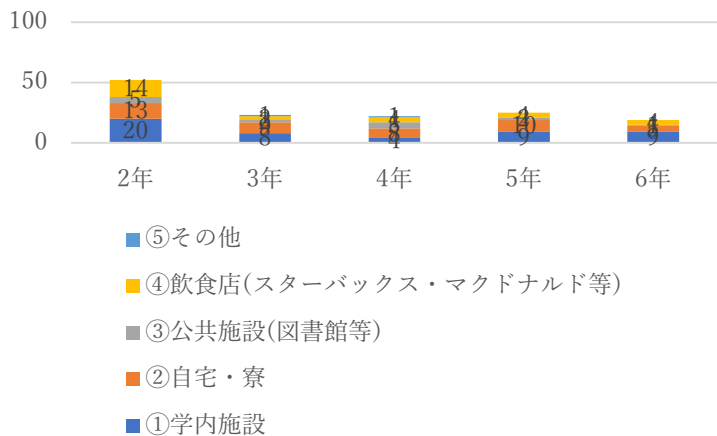


(OT)

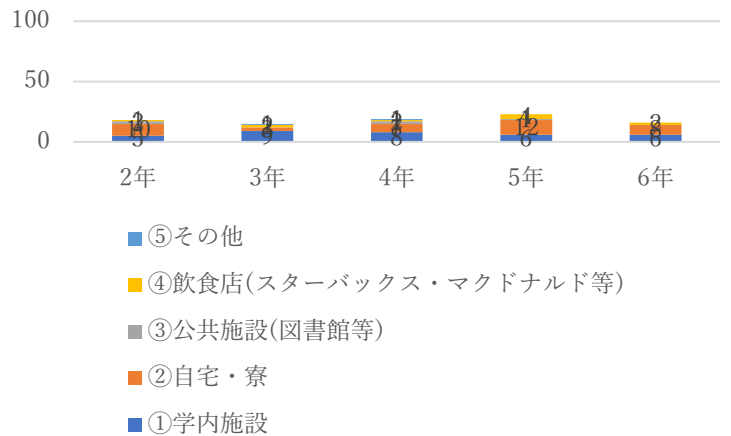


15.一番快適に学修できる場所はどこですか？

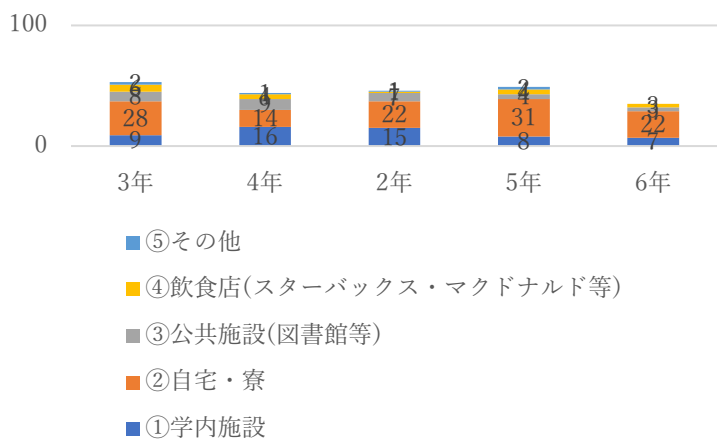
(M)



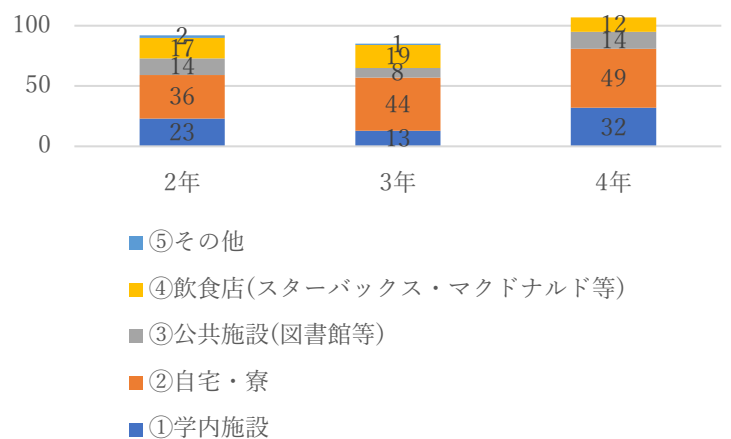
(D)



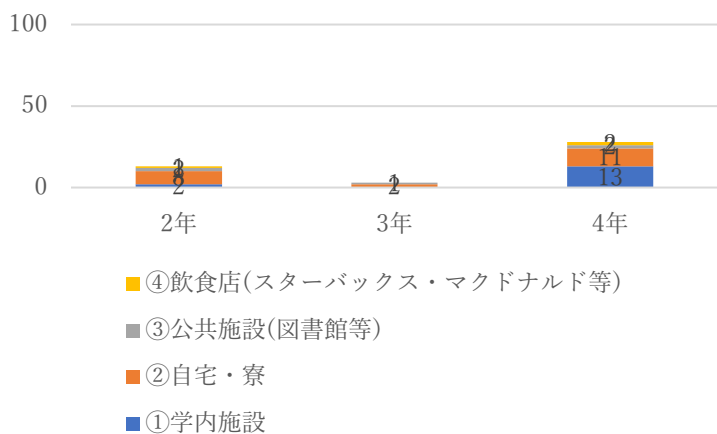
(P)



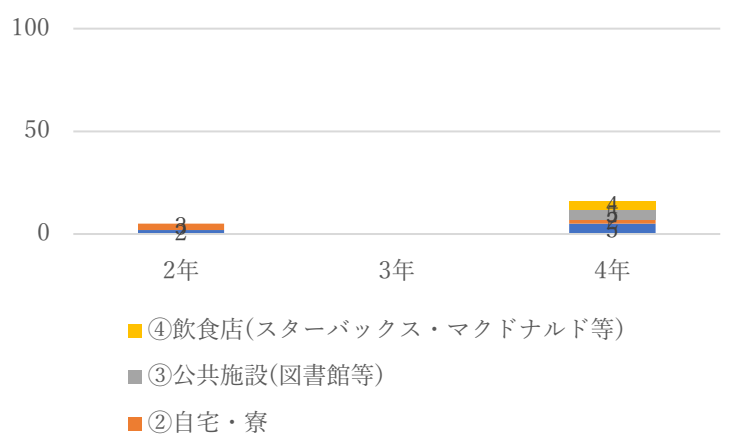
(NS)



(PT)

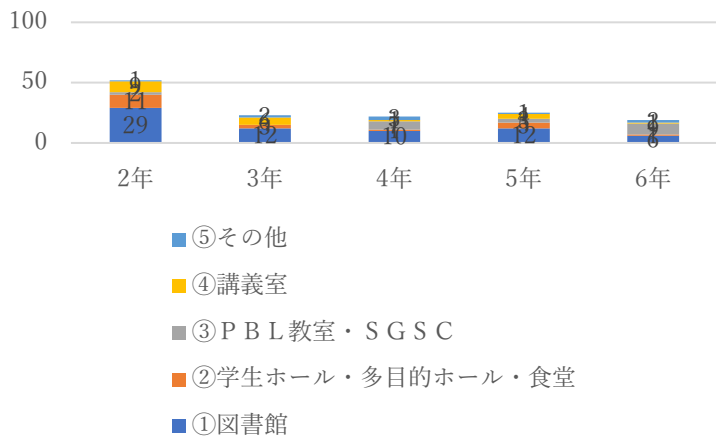


(OT)

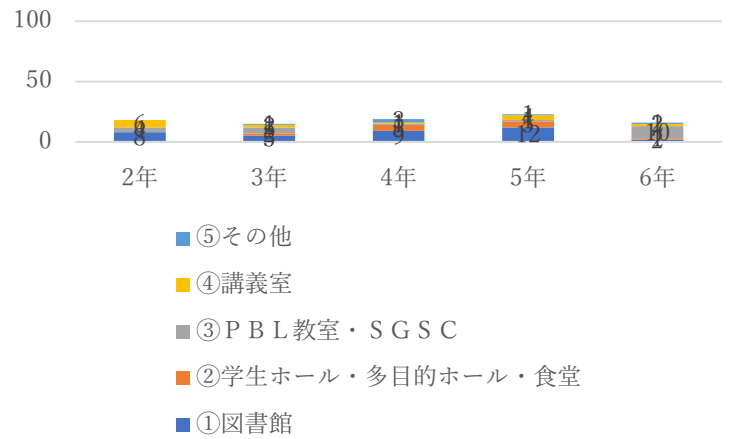


16.学内施設で学修する場合、どの場所が一番快適に学修できますか？

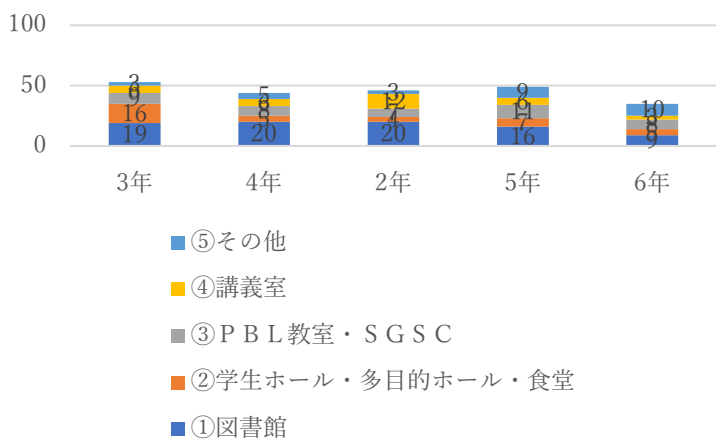
(M)



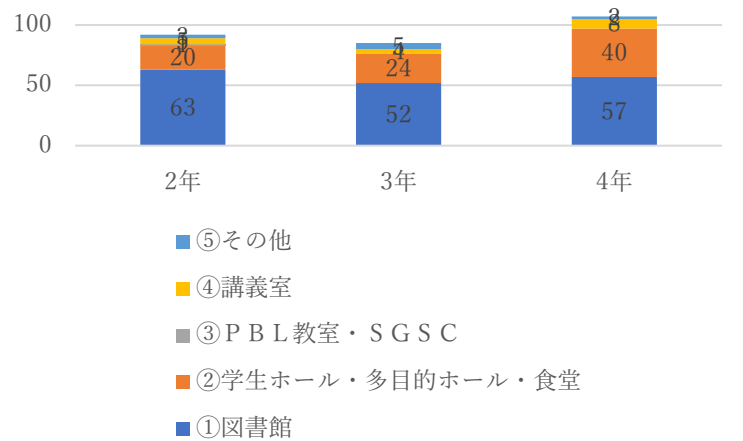
(D)



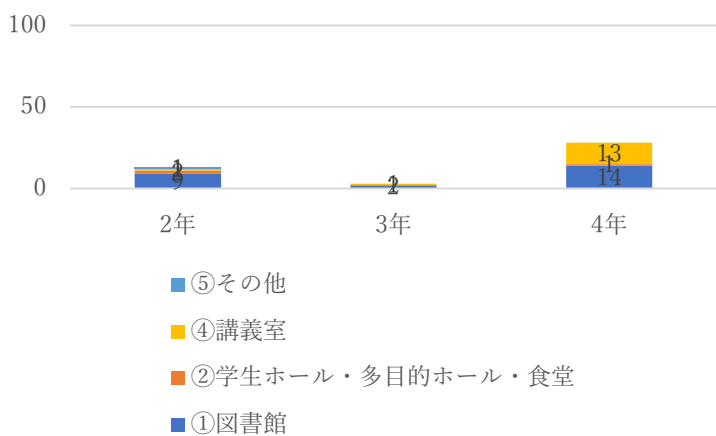
(P)



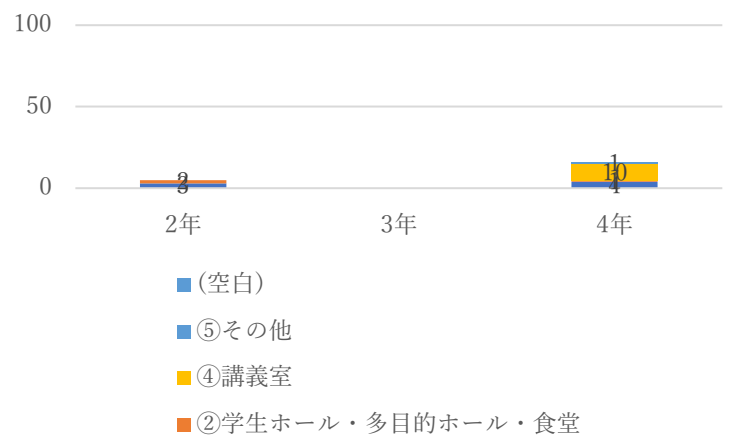
(NS)



(PT)

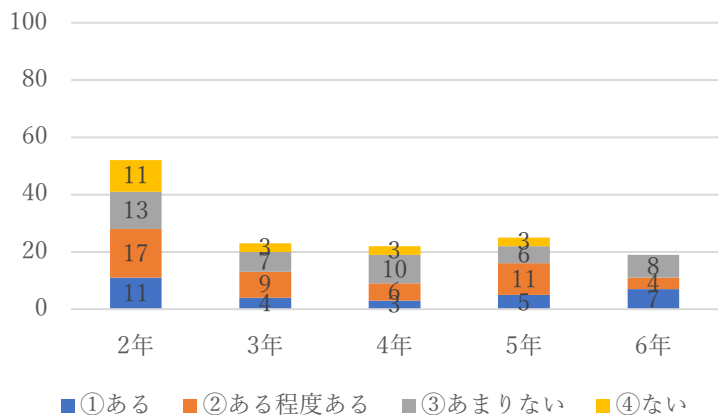


(OT)

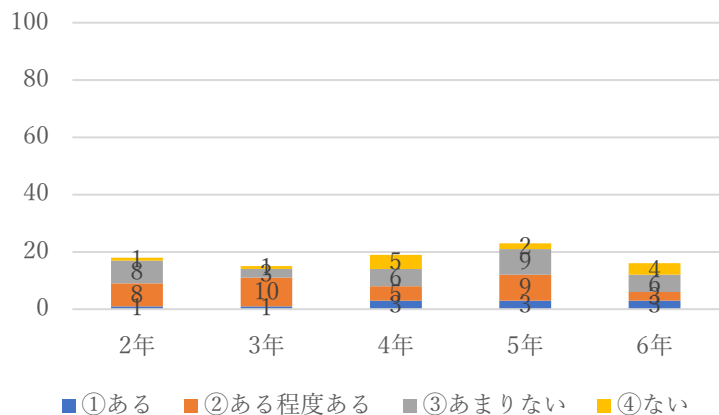


18. 「研究」に興味・関心がありますか？

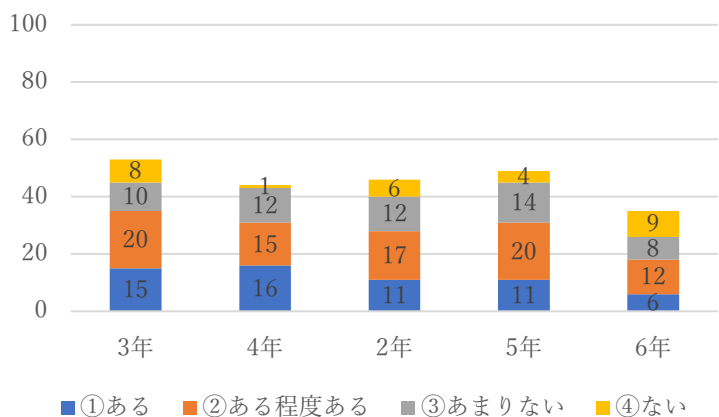
(M)



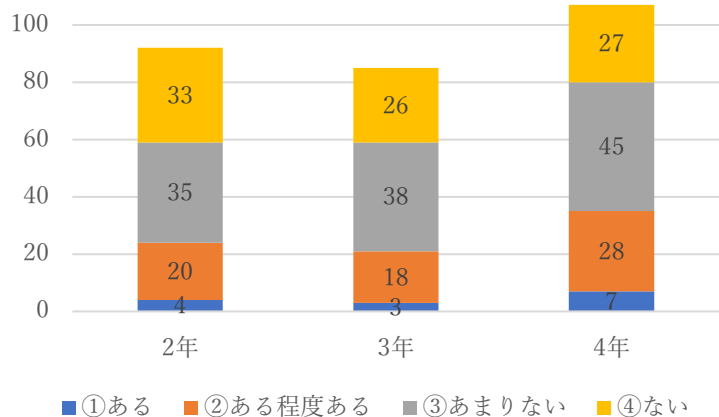
(D)



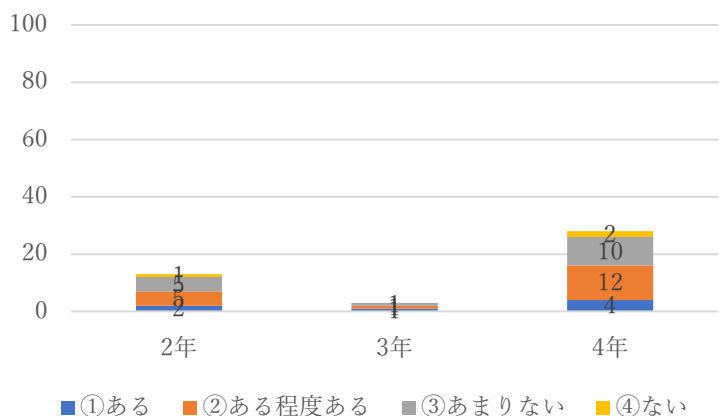
(P)



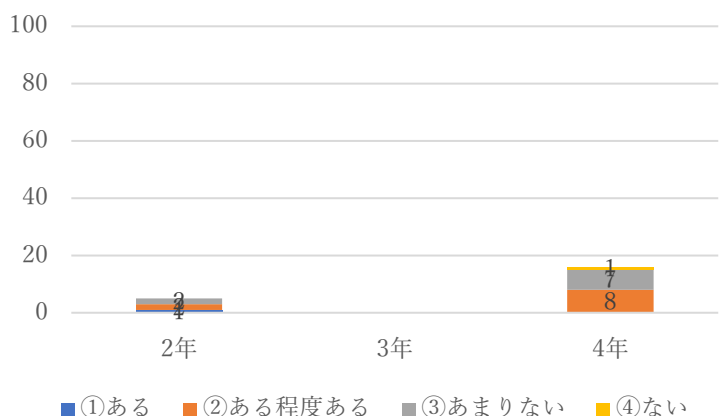
(NS)



(PT)

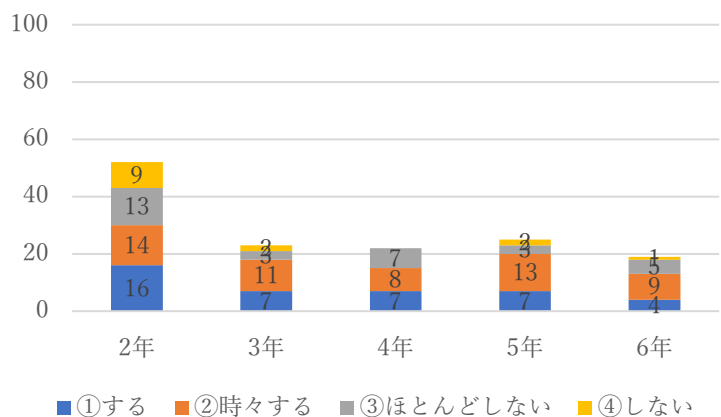


(OT)

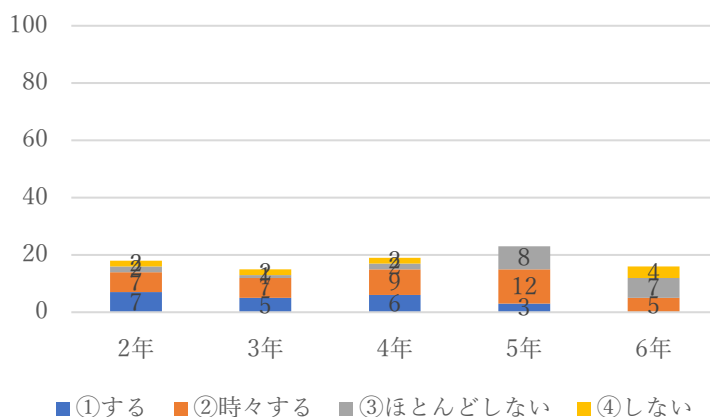


19.授業前にシラバスを確認しますか？

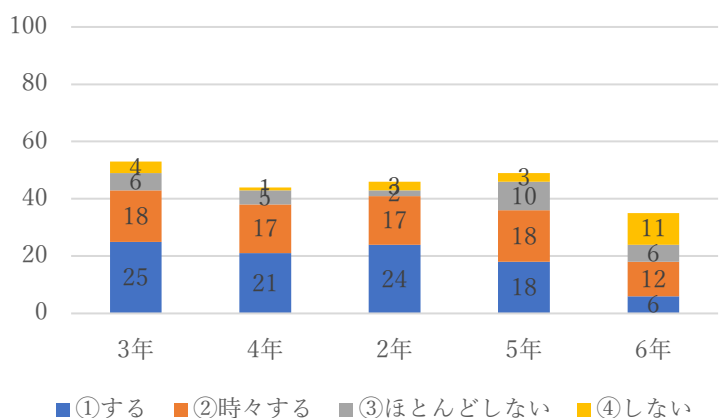
(M)



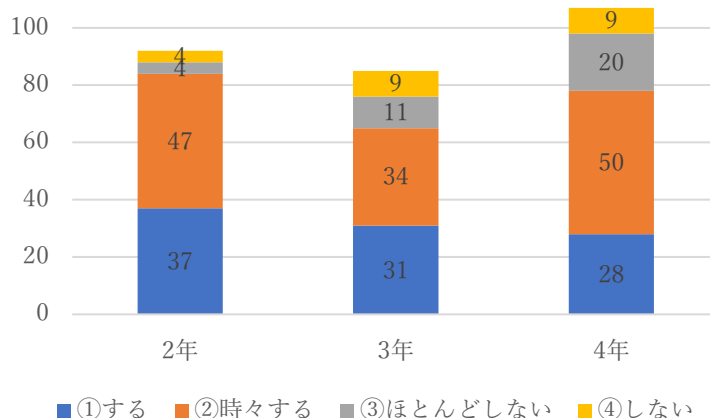
(D)



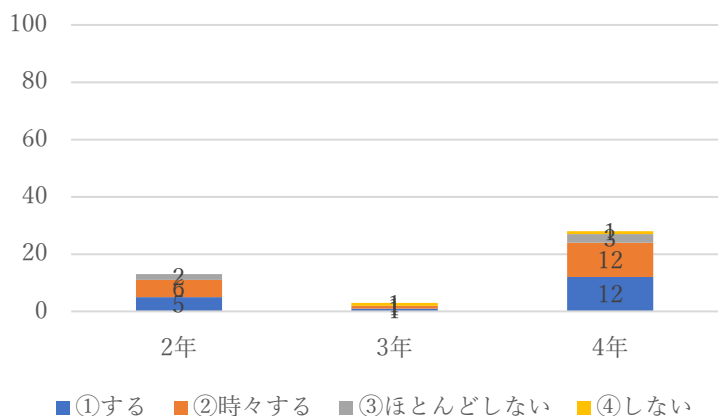
(P)



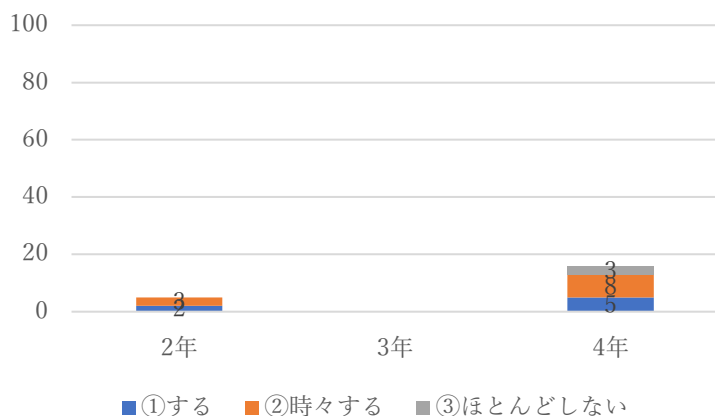
(NS)



(PT)

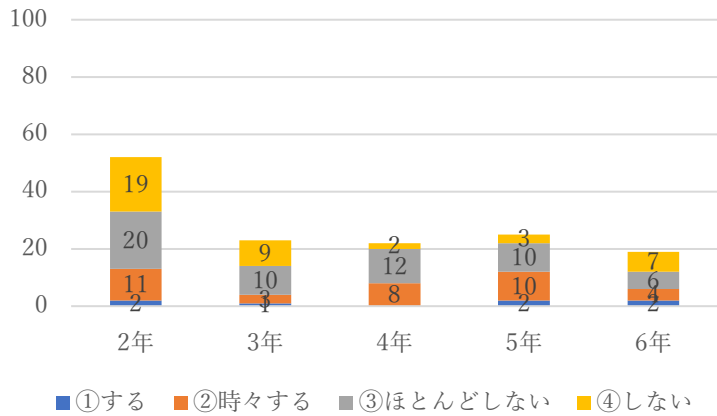


(OT)

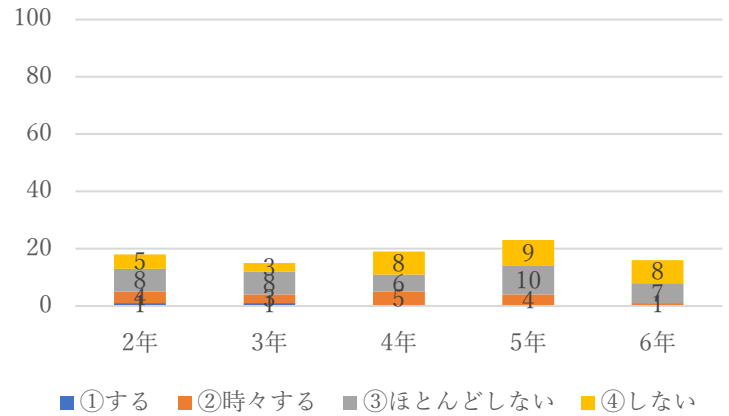


20.授業前にシラバスを確認し、予習をしますか？

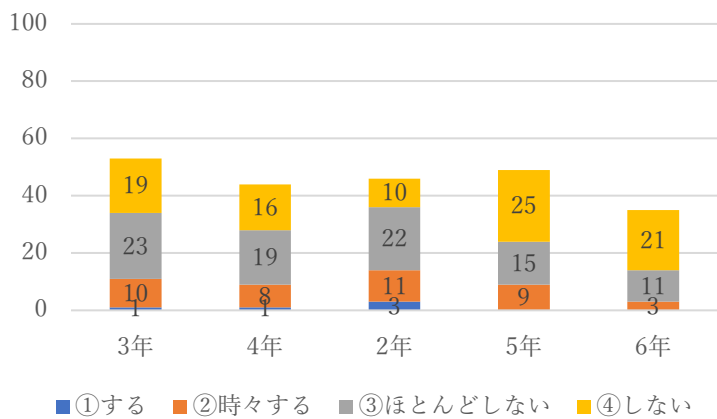
(M)



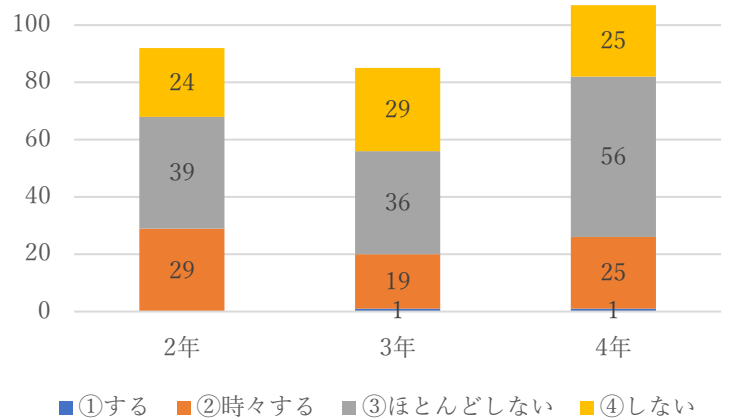
(D)



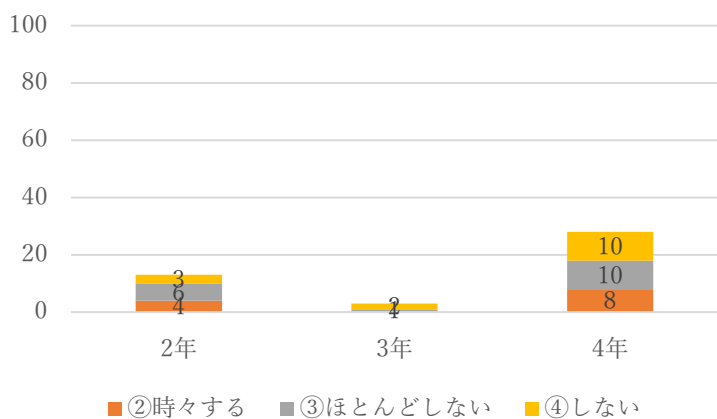
(P)



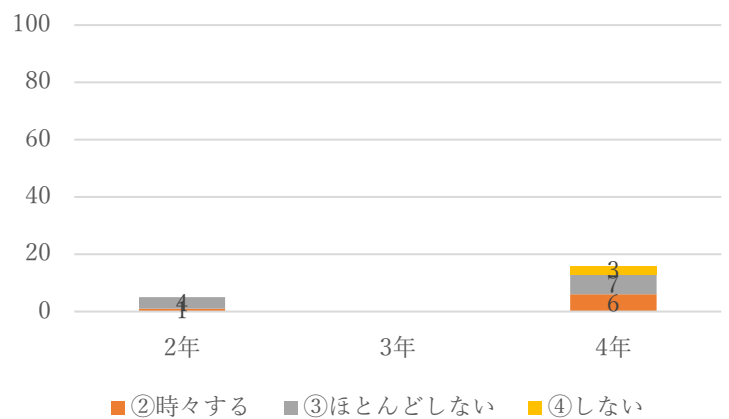
(NS)



(PT)

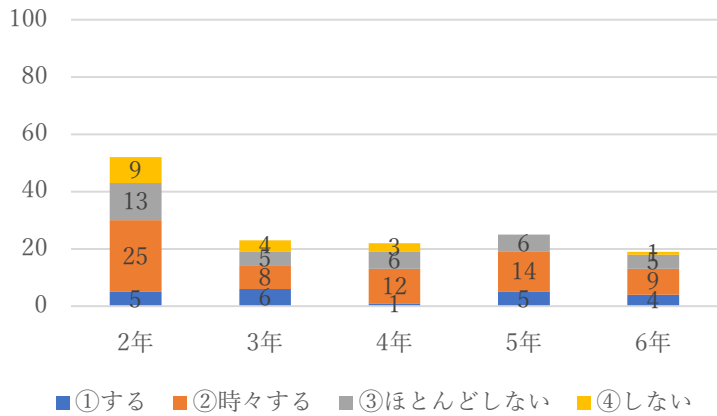


(OT)

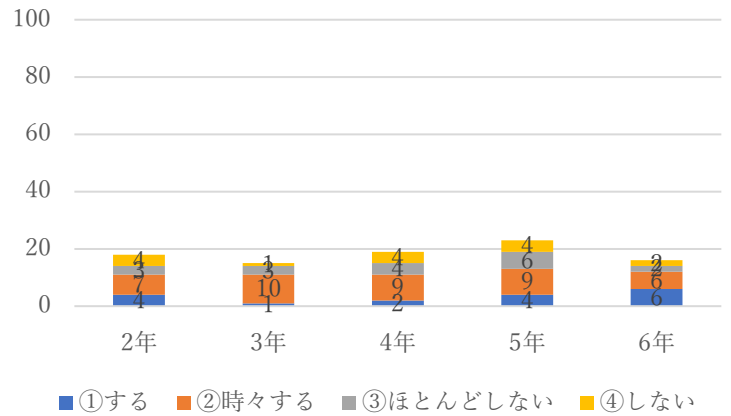


21.授業後に復習をしますか？

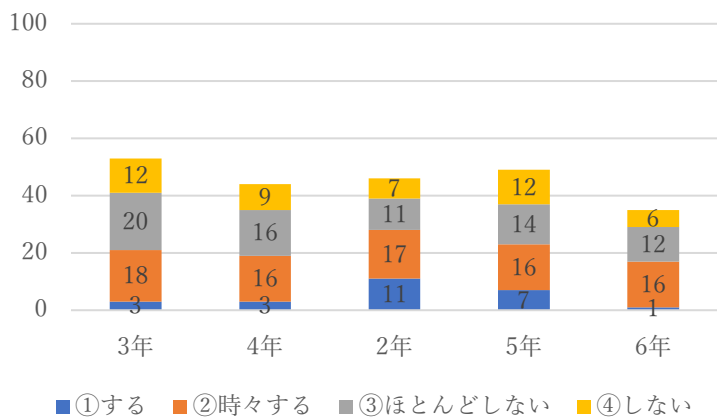
(M)



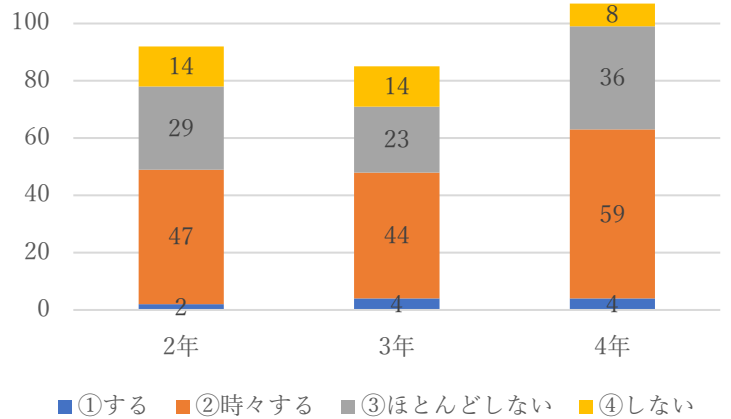
(D)



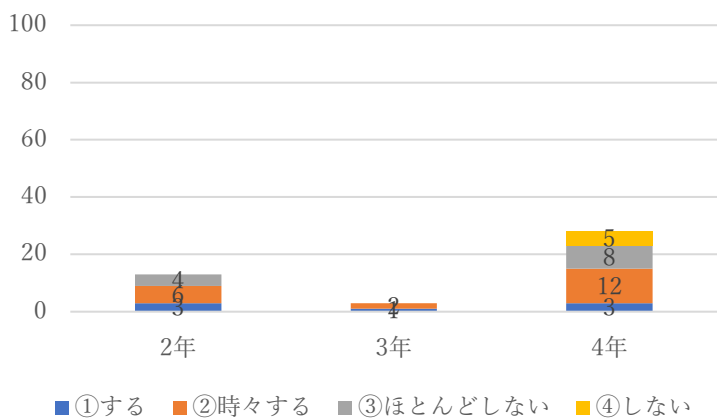
(P)



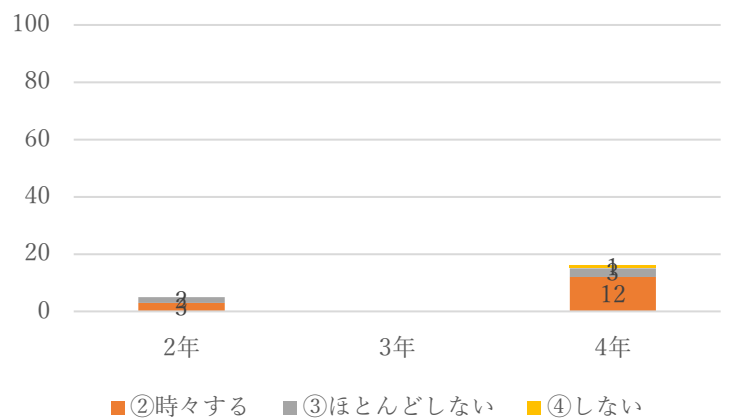
(NS)



(PT)

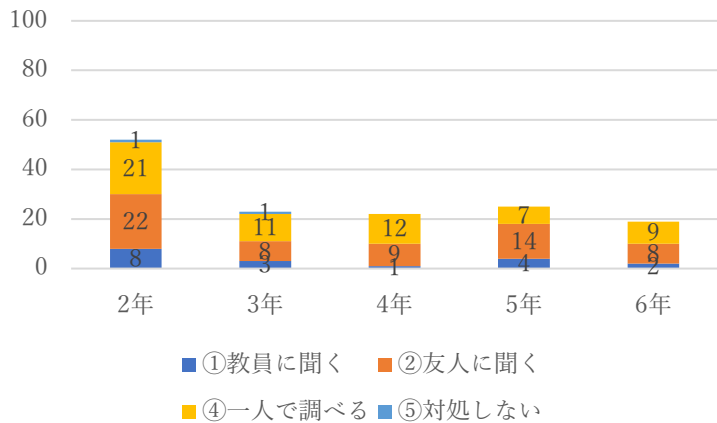


(OT)

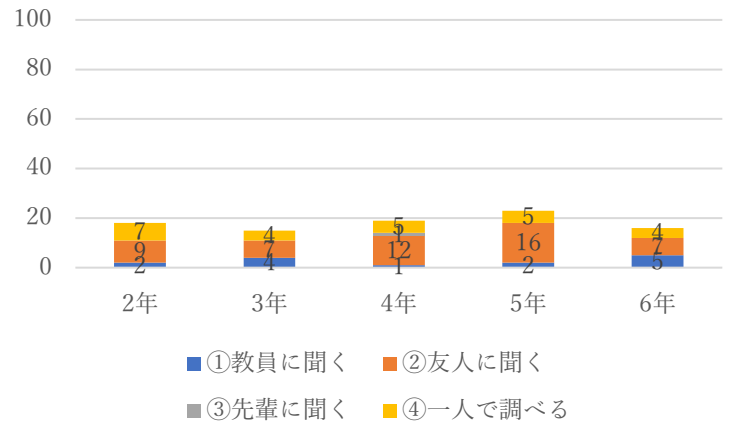


22.授業中に生じた疑問点は、どのように対処していますか？

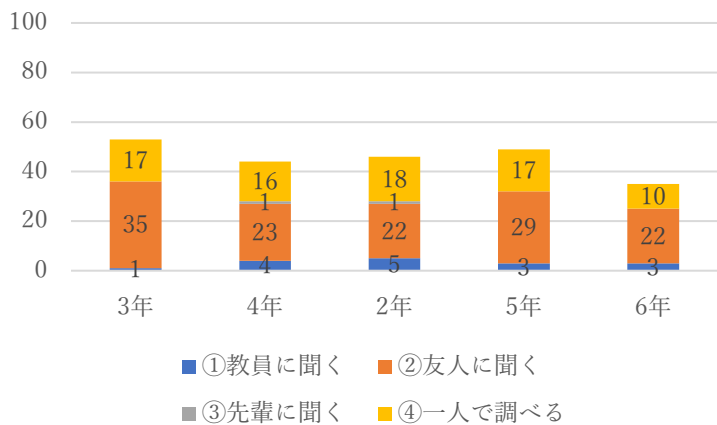
(M)



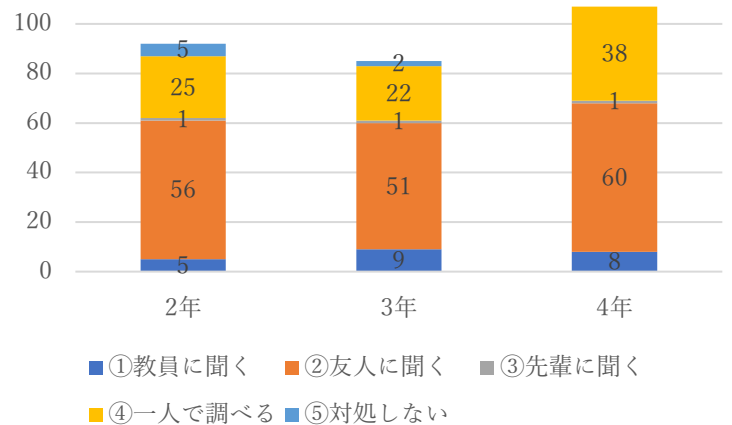
(D)



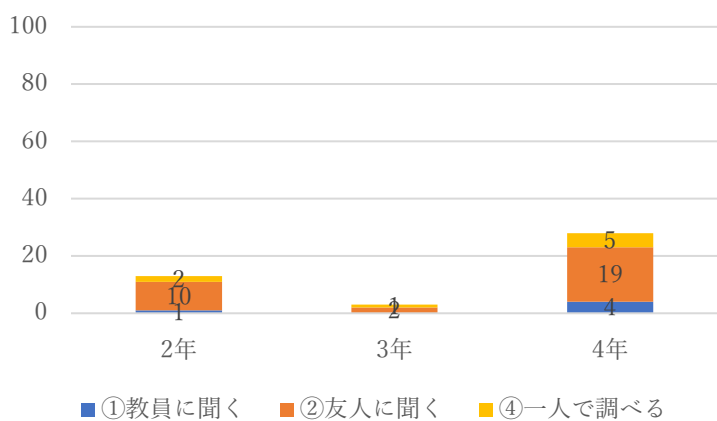
(P)



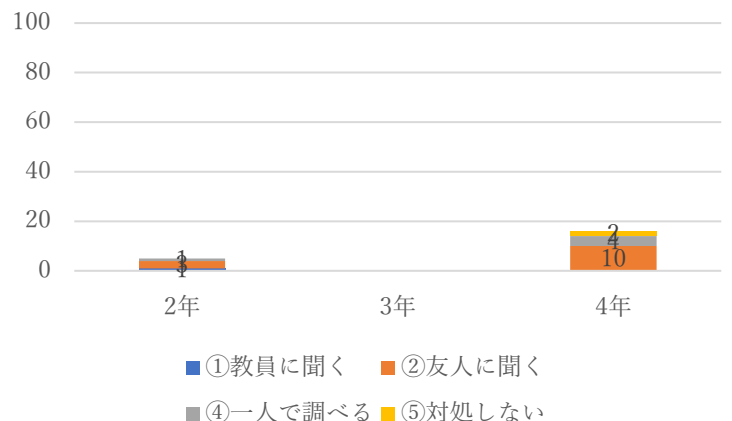
(NS)



(PT)

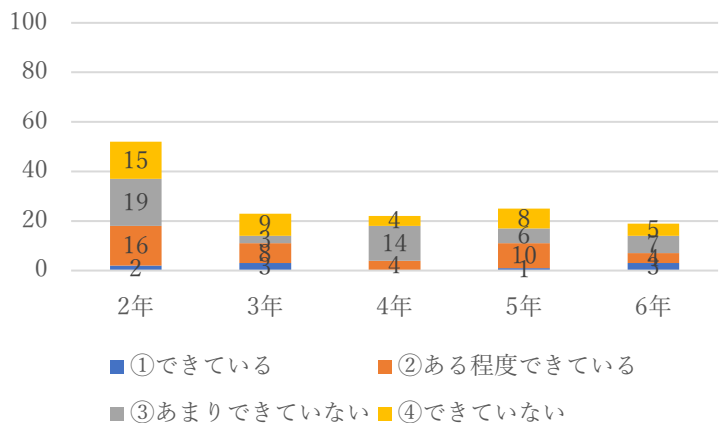


(OT)

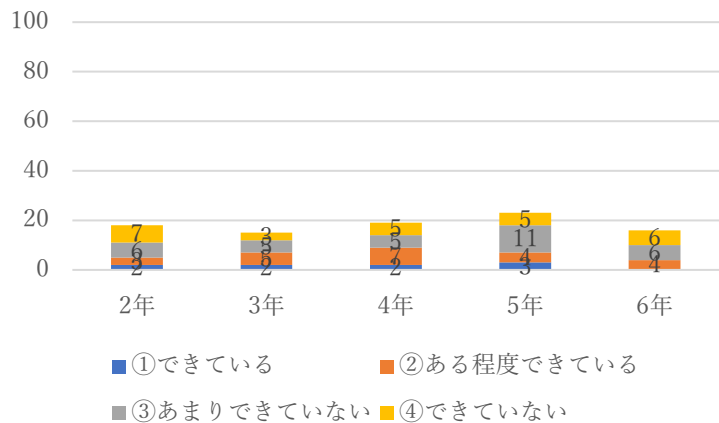


23.ポートフォリオで自らの成長を確認できていますか？

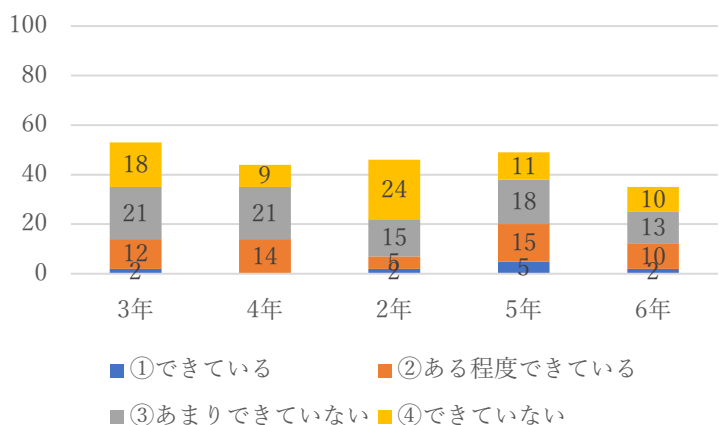
(M)



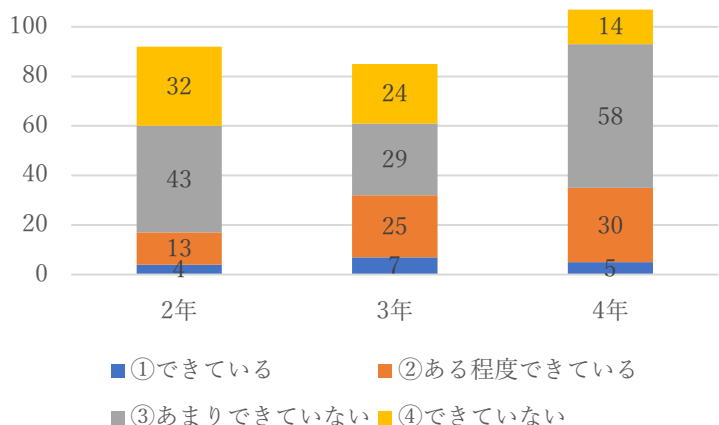
(D)



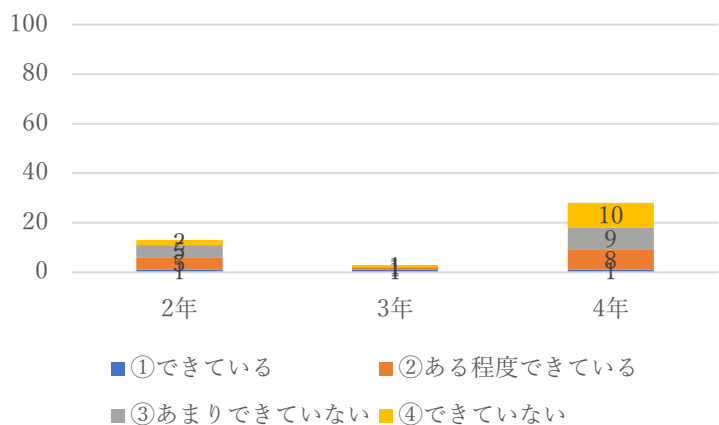
(P)



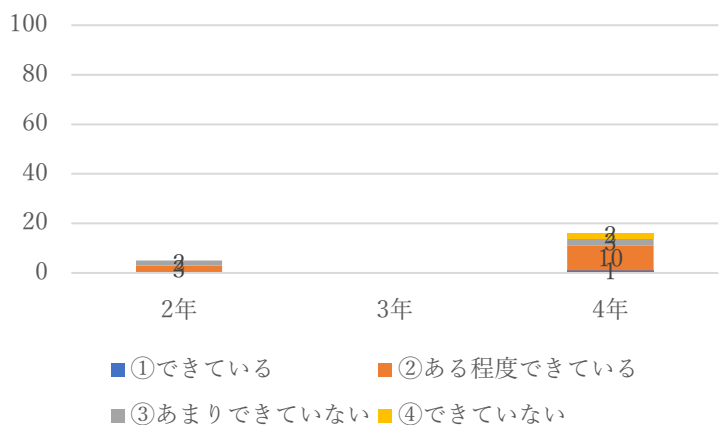
(NS)



(PT)

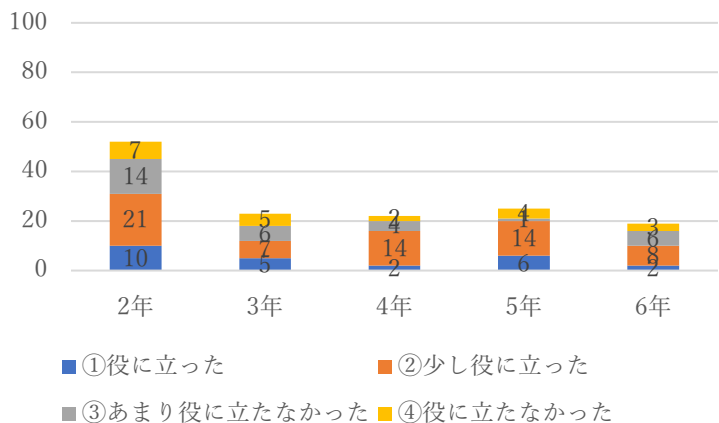


(OT)

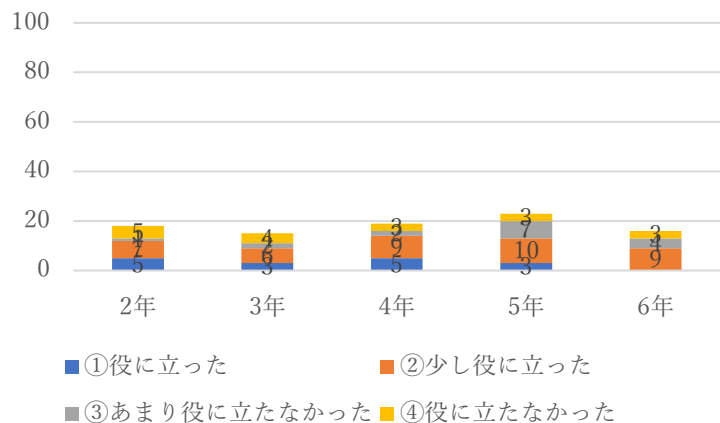


24.ポートフォリオでの指導者からのフィードバックは役に立ちましたか？

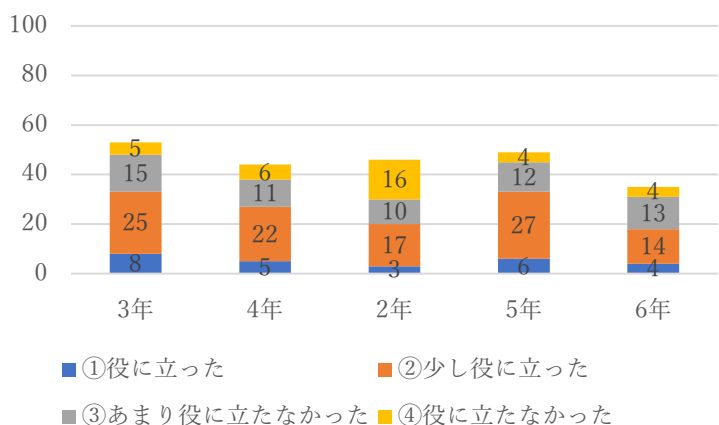
(M)



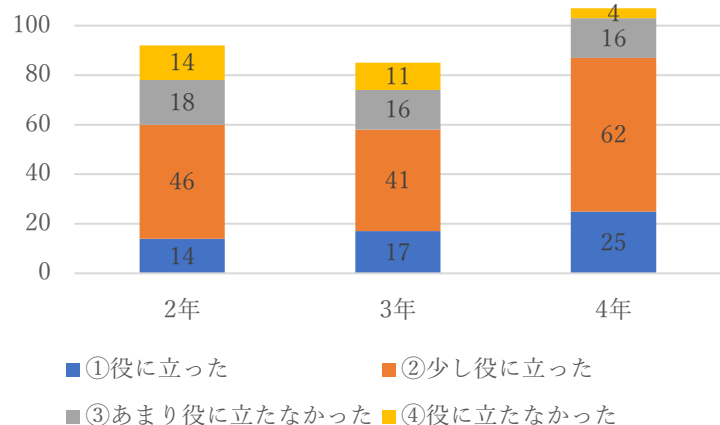
(D)



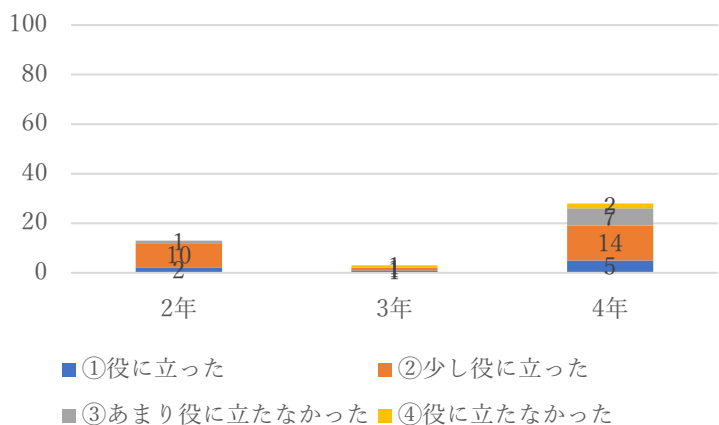
(P)



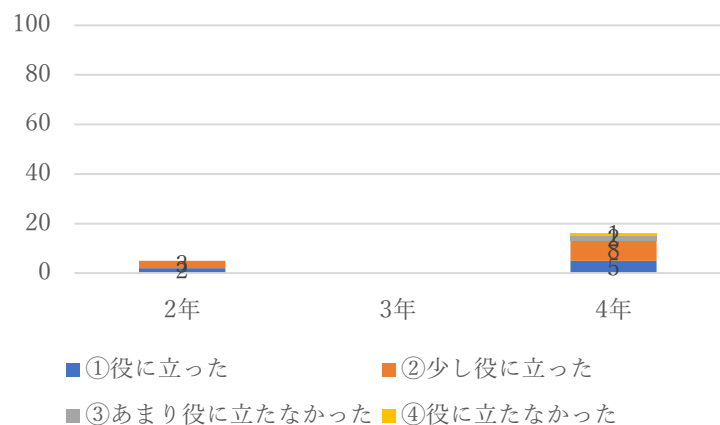
(NS)



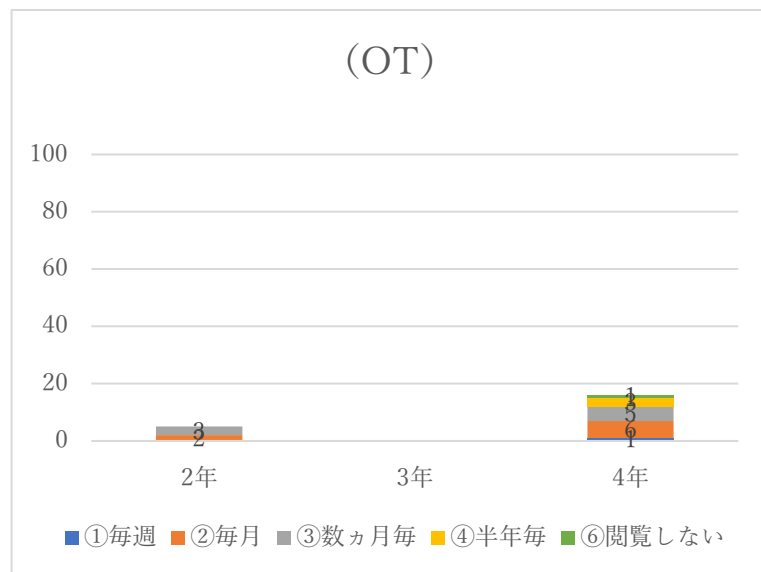
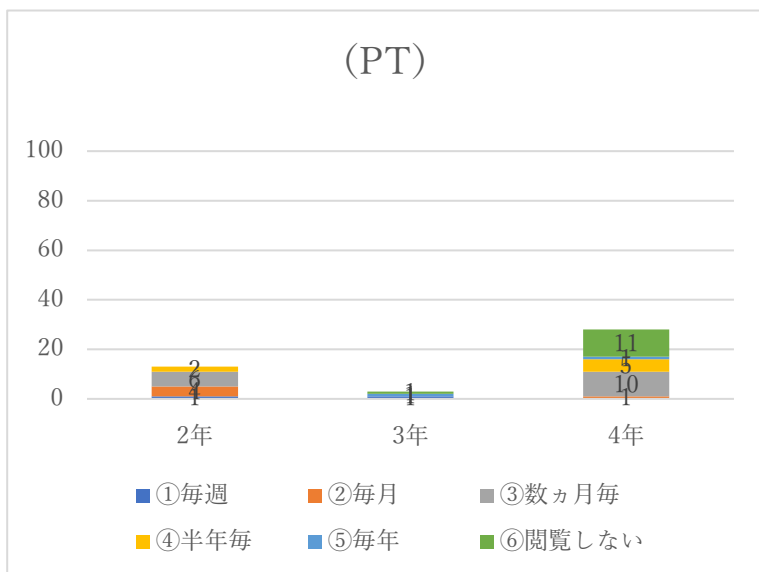
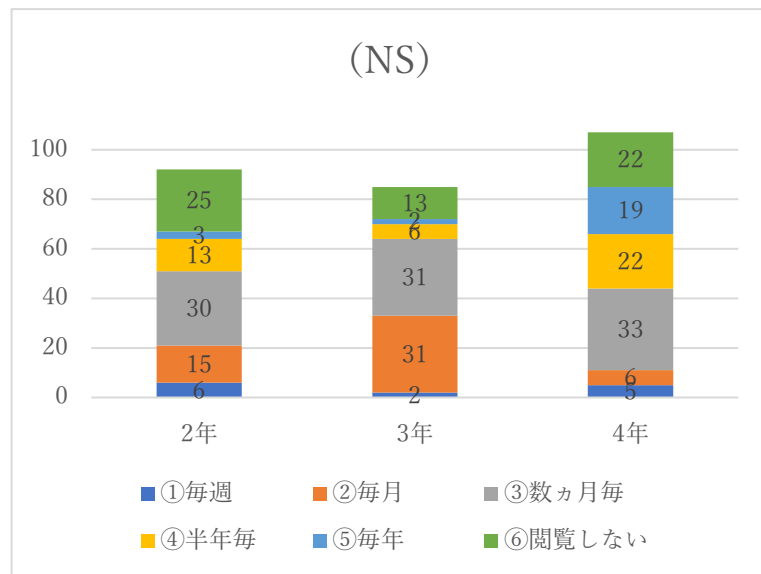
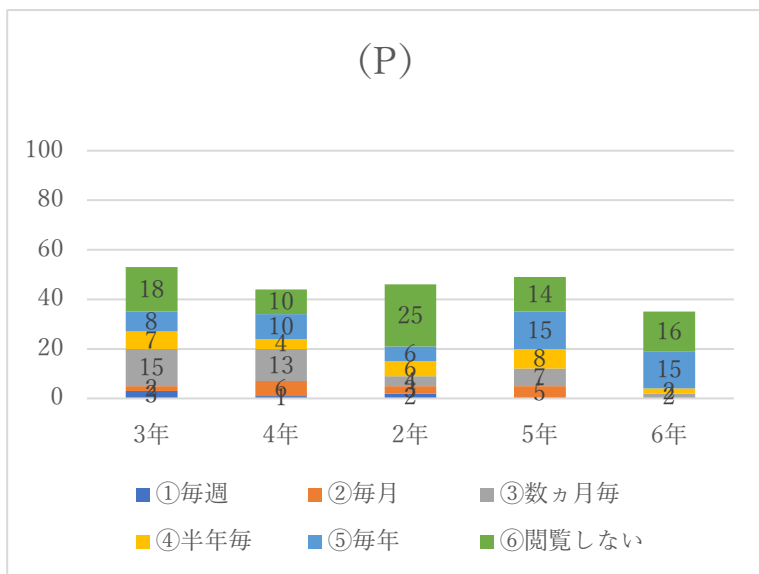
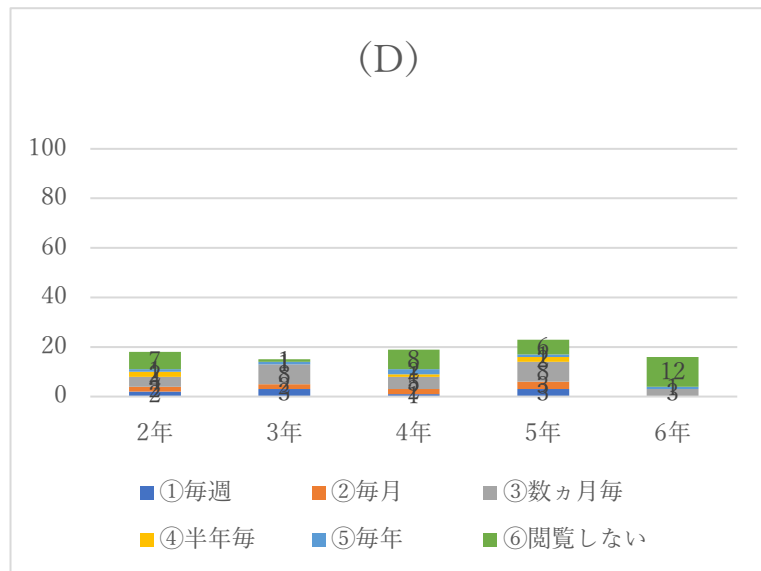
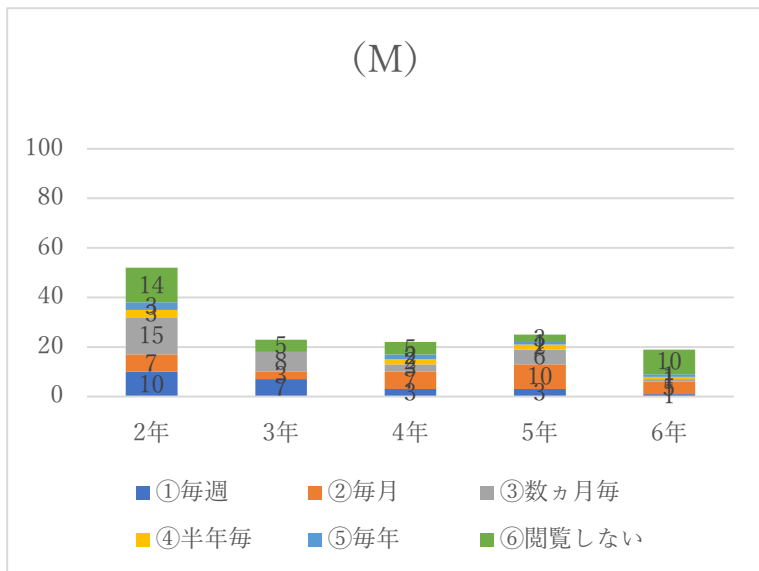
(PT)



(OT)

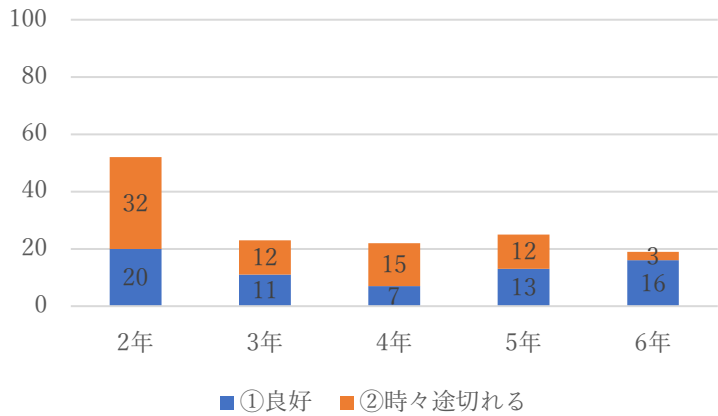


25.ポートフォリオを閲覧する機会はどれくらいありますか？

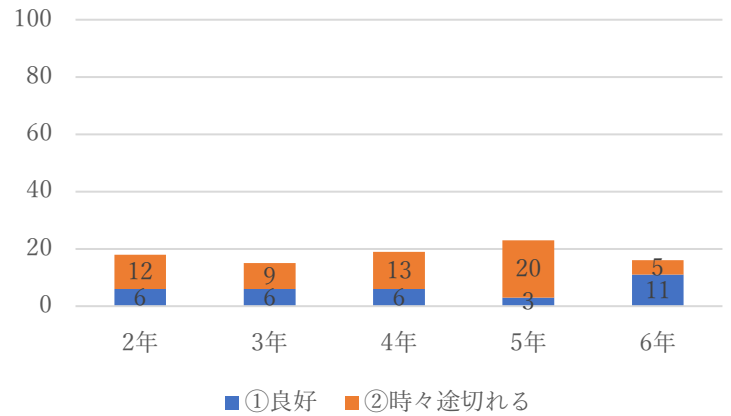


26.通信に関する問題がありましたか？

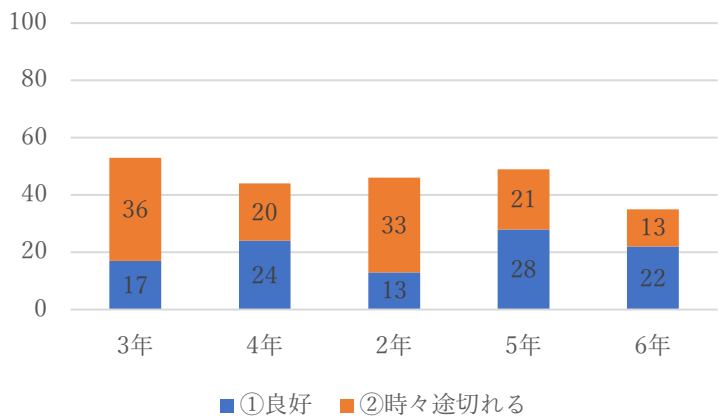
(M)



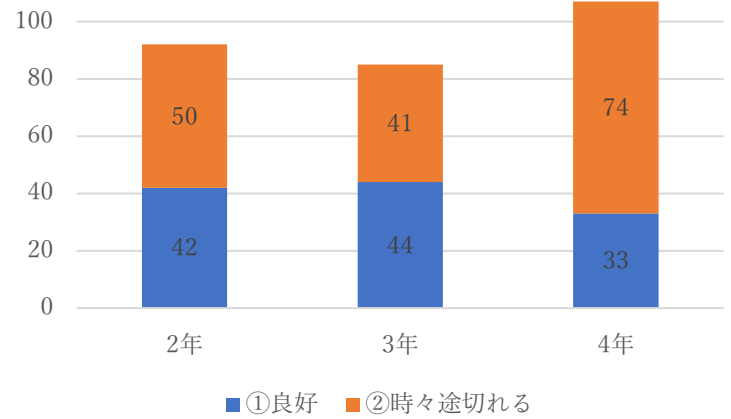
(D)



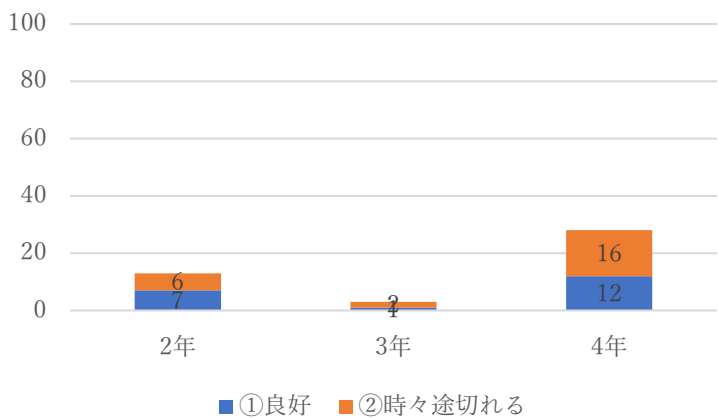
(P)



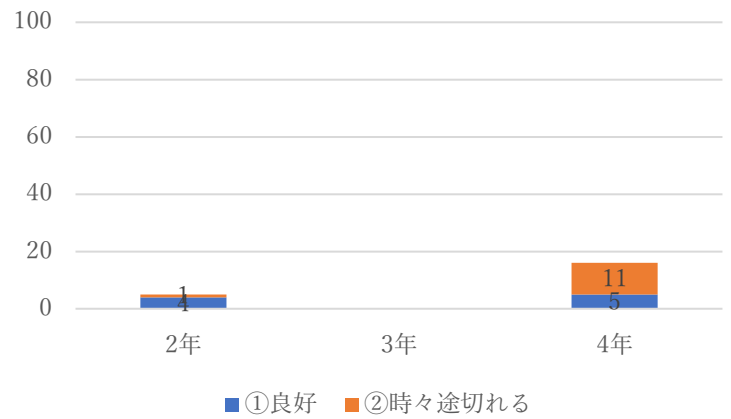
(NS)



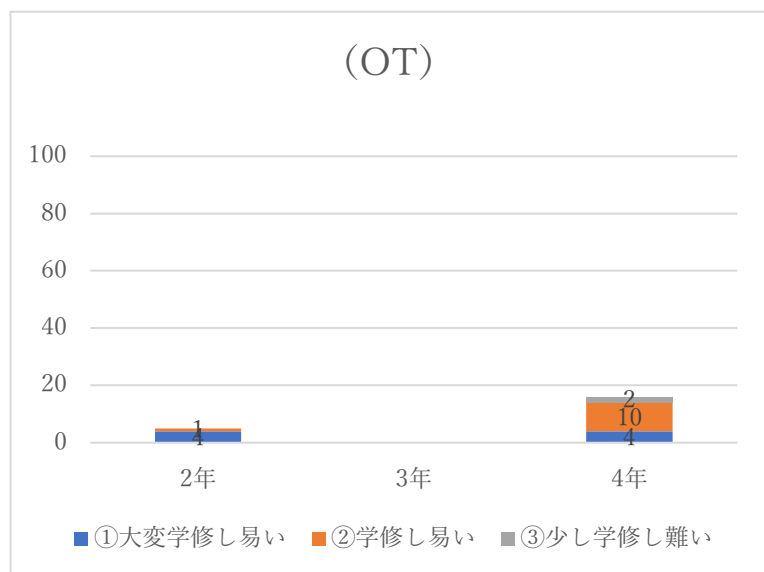
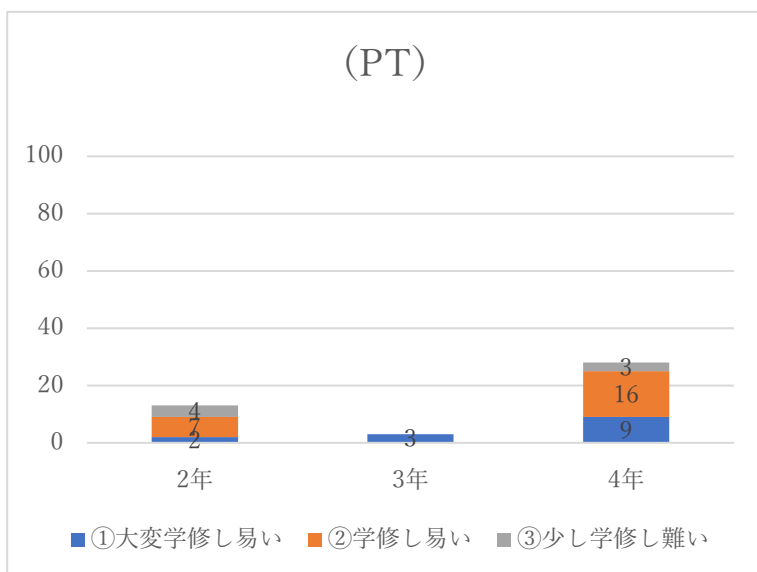
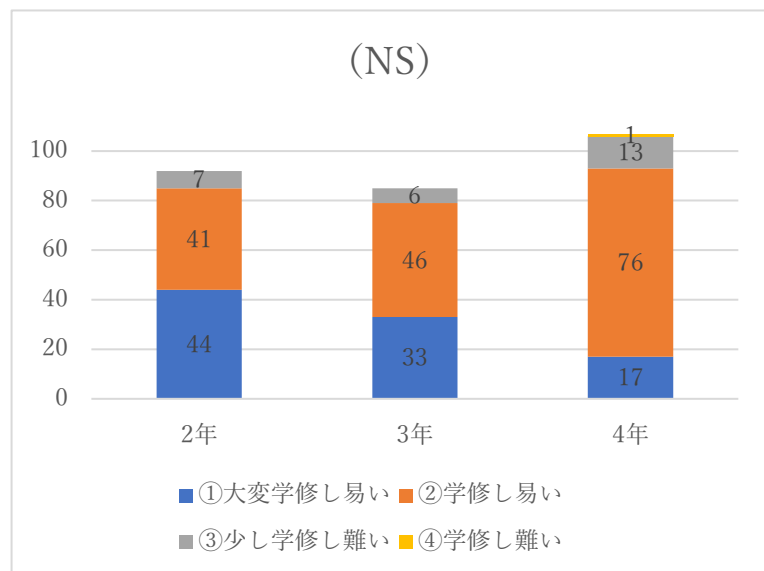
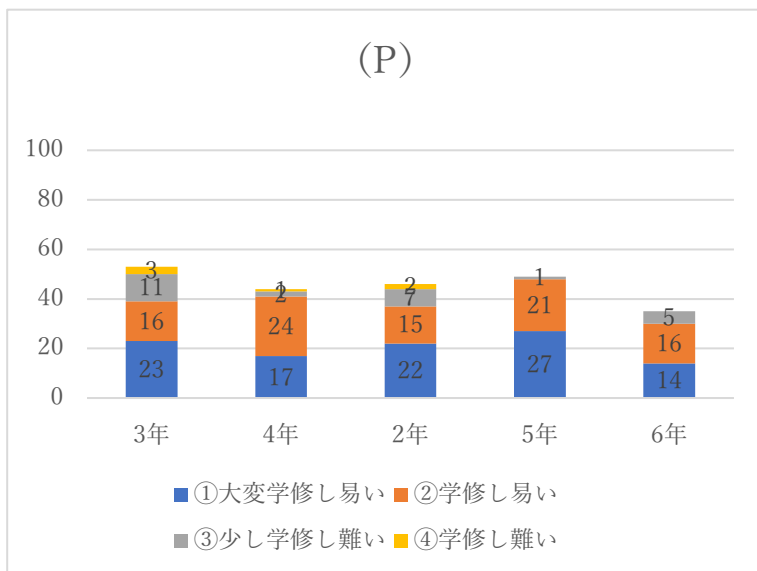
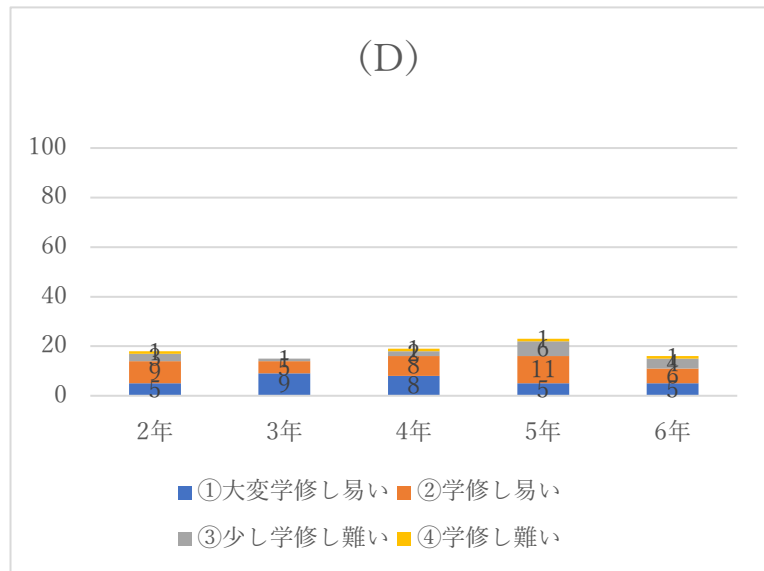
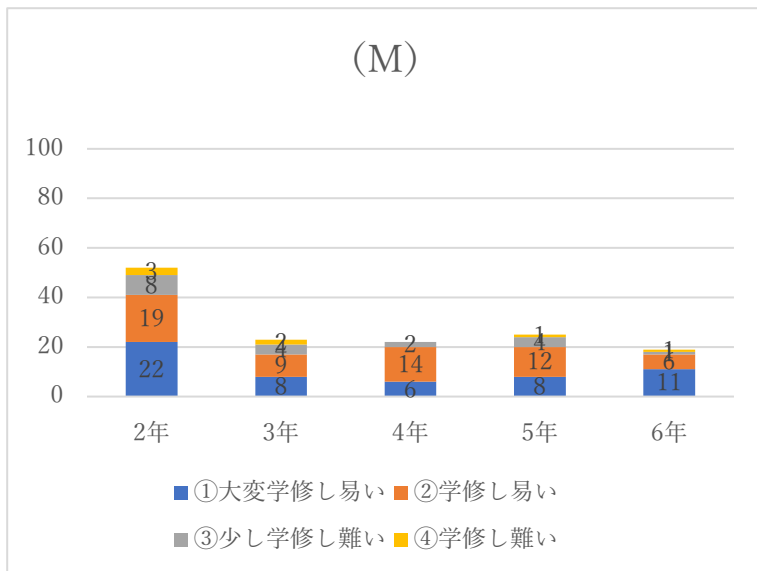
(PT)



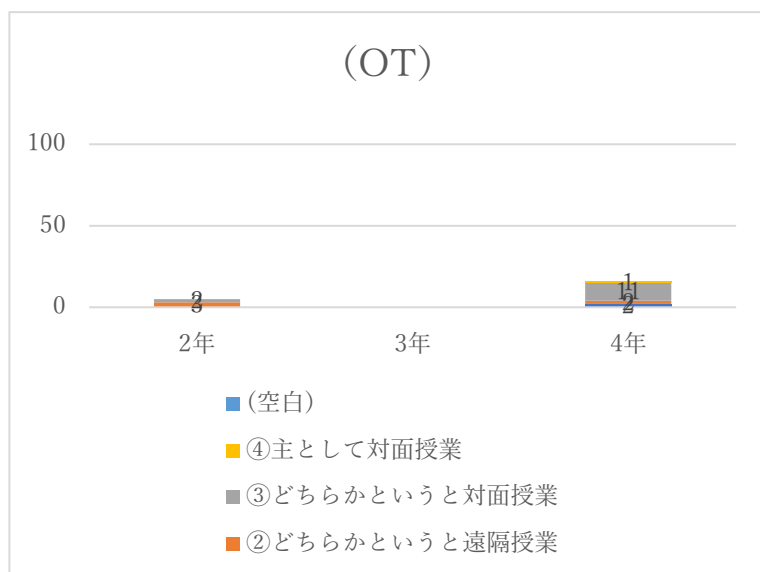
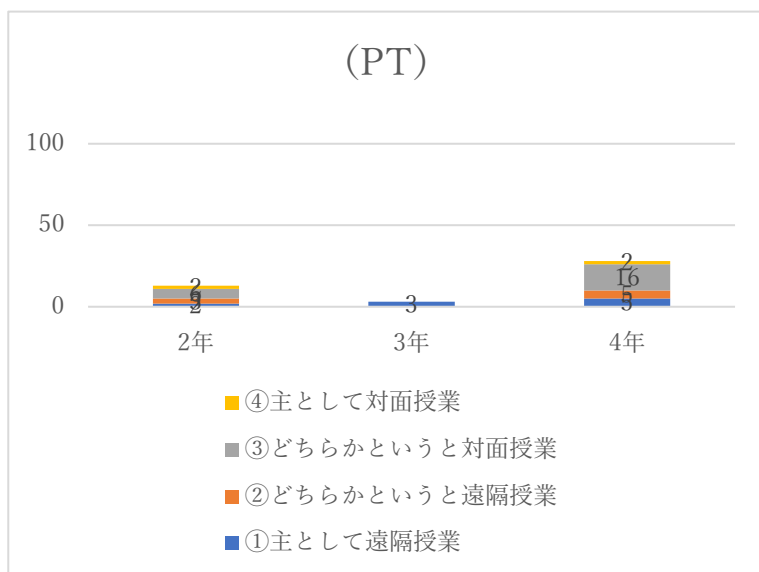
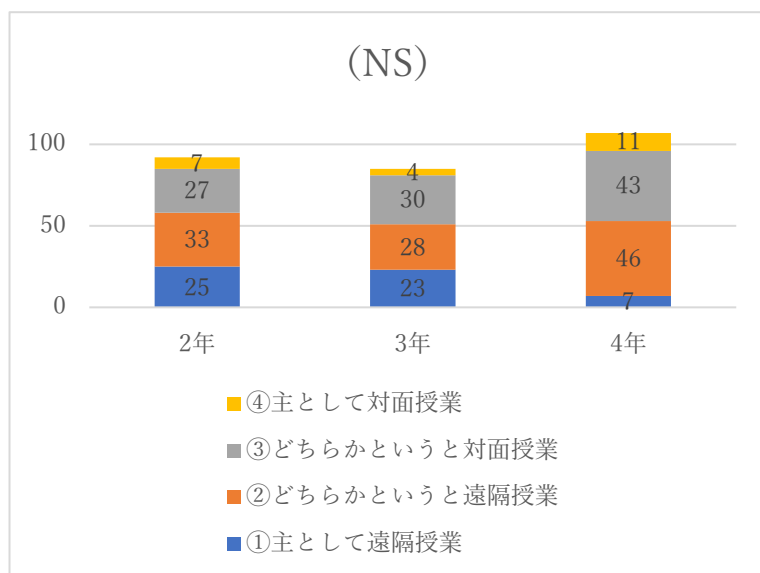
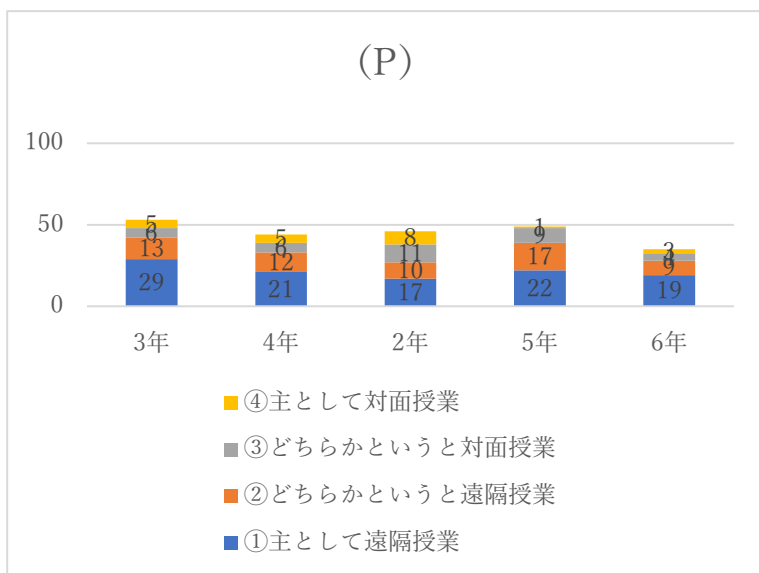
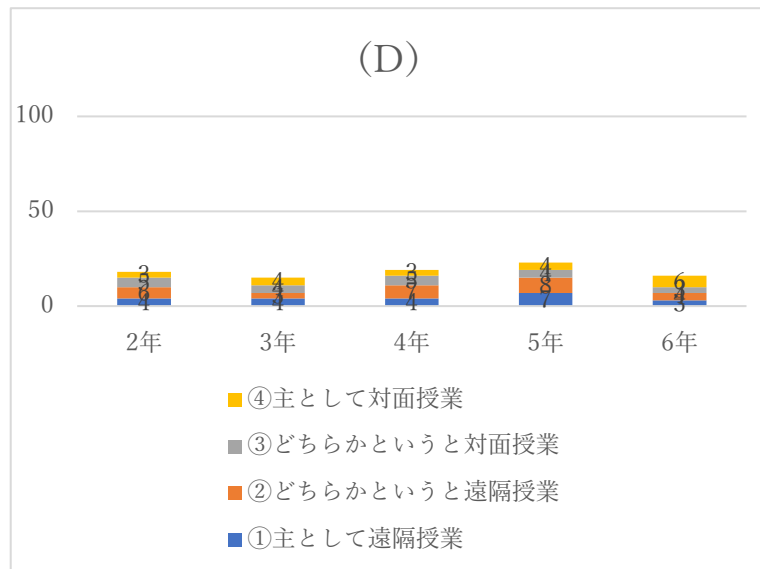
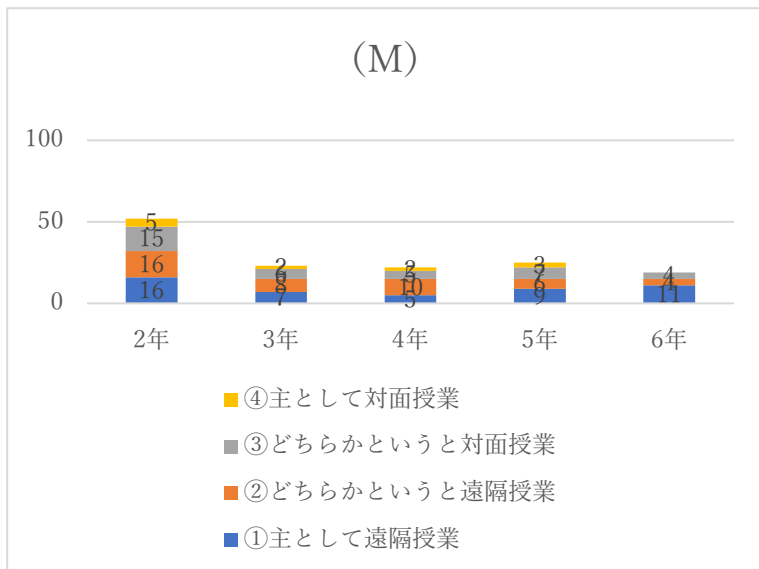
(OT)



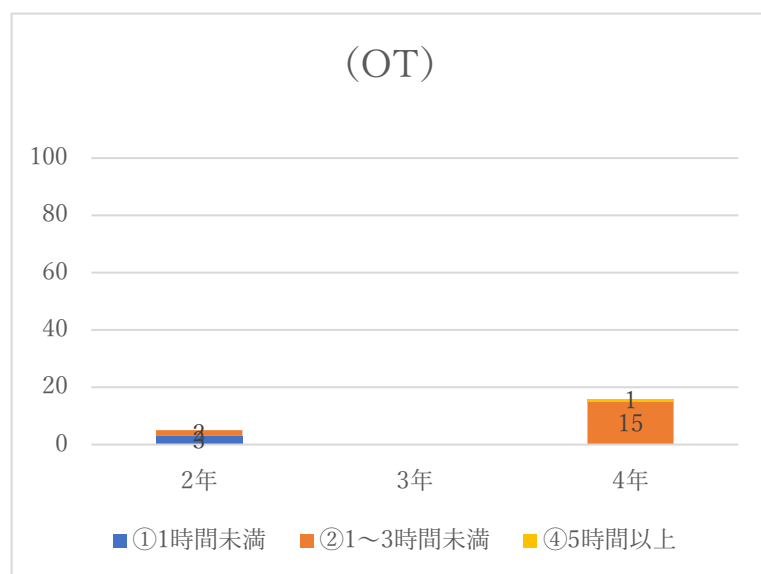
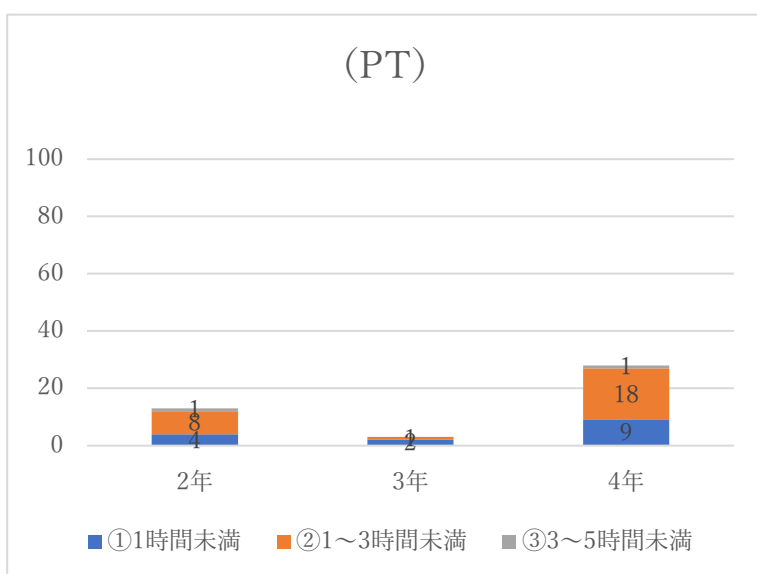
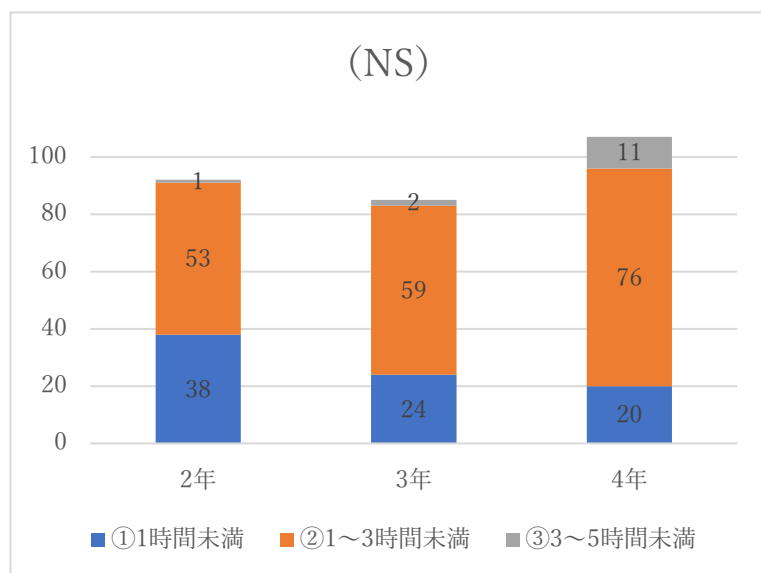
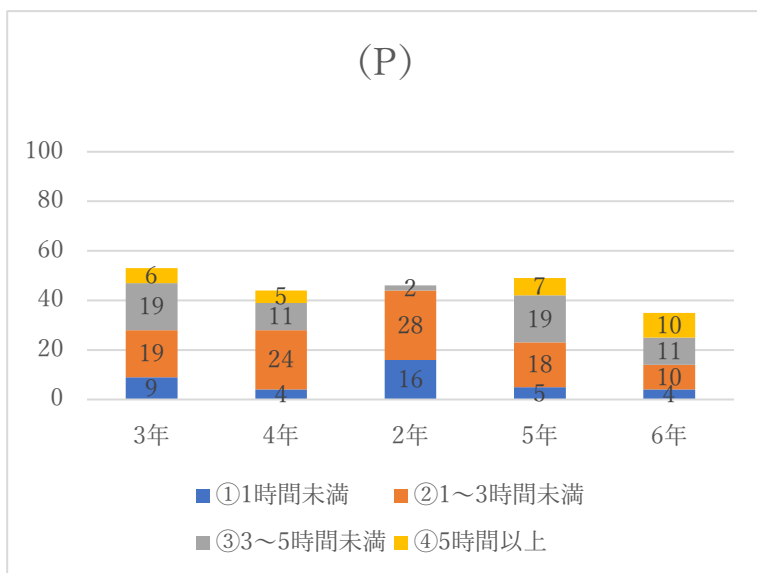
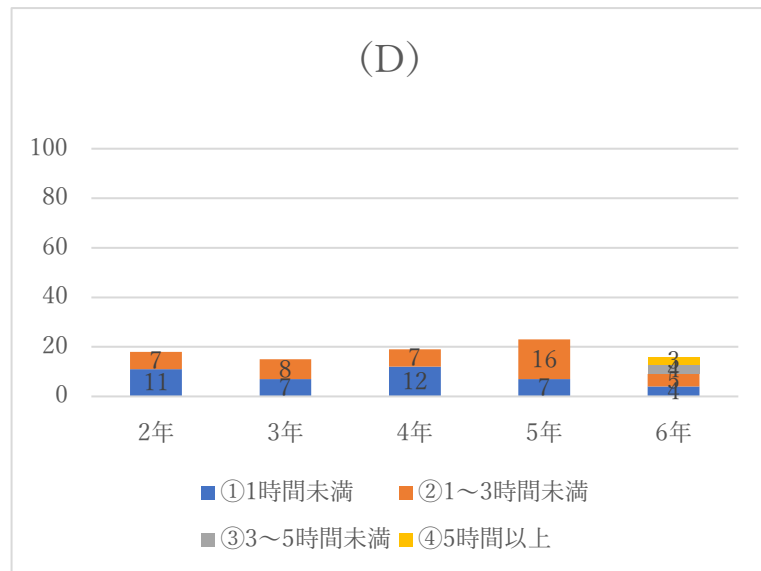
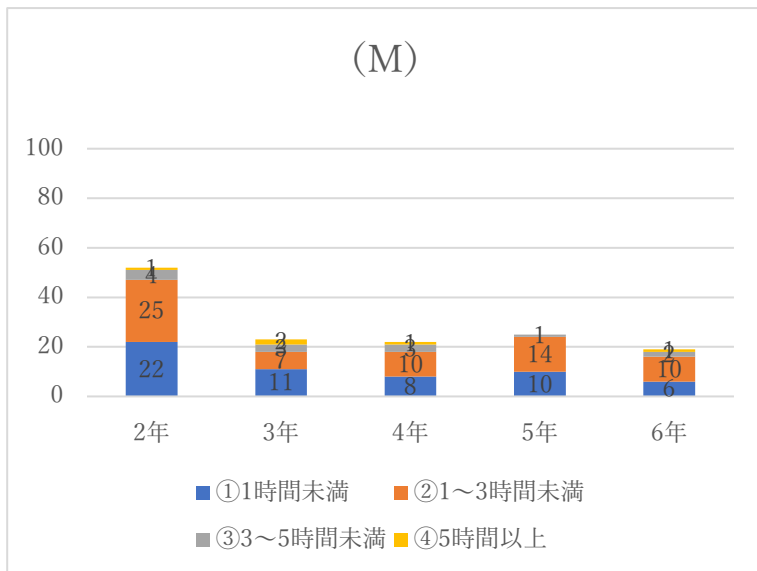
27.遠隔授業（オンデマンドやライブ配信）は学修し易かったですか？



28.遠隔授業と通常の対面授業のどちらが学修し易かったですか？

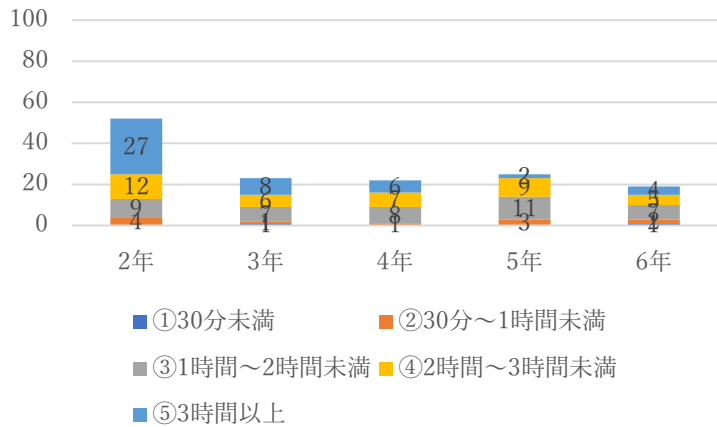


29.遠隔授業の視聴時間は1日当たりどのくらい時間を要しましたか(費やしましたか)?

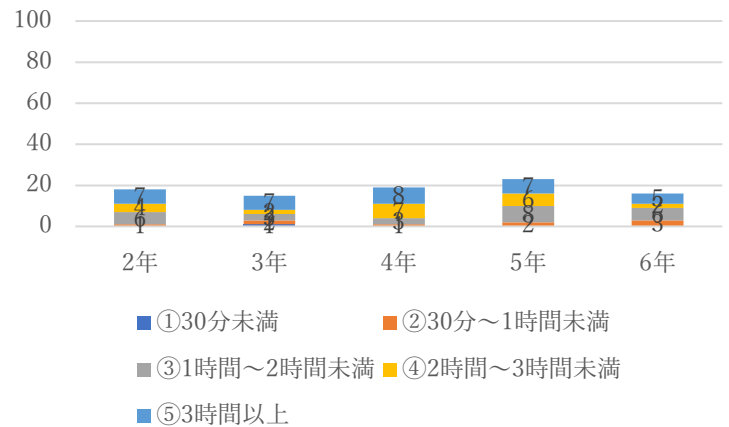


30.LINE、Teams、YouTube、オンラインゲーム等、インターネットに接続し提供されているサービスを（平均的な一日あたり）どれくらい利用しますか？

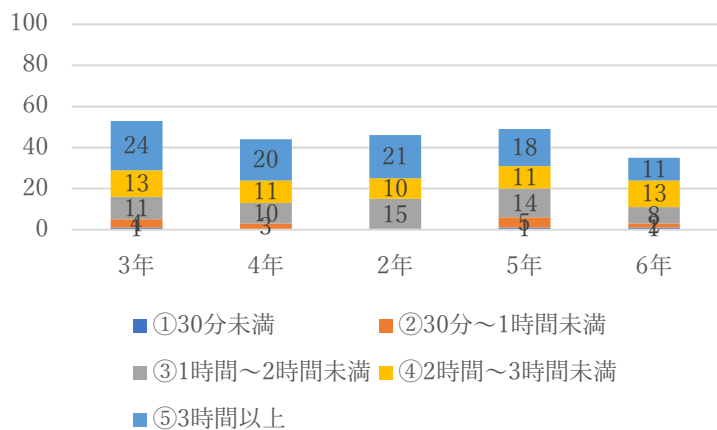
(M)



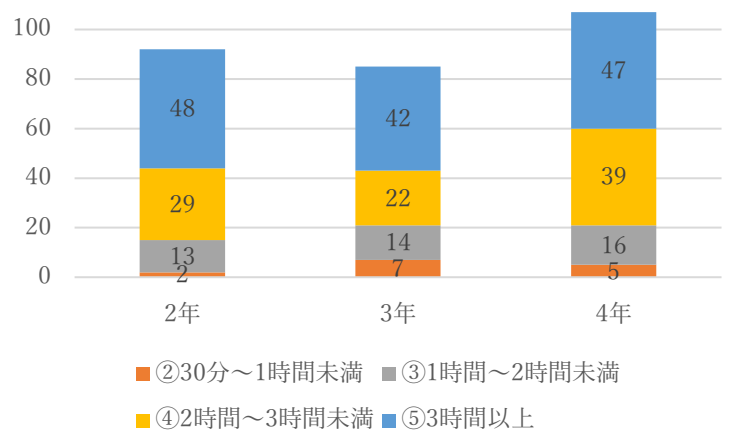
(D)



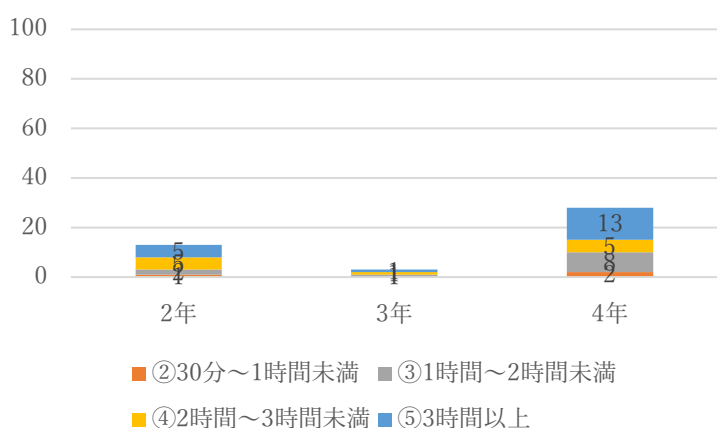
(P)



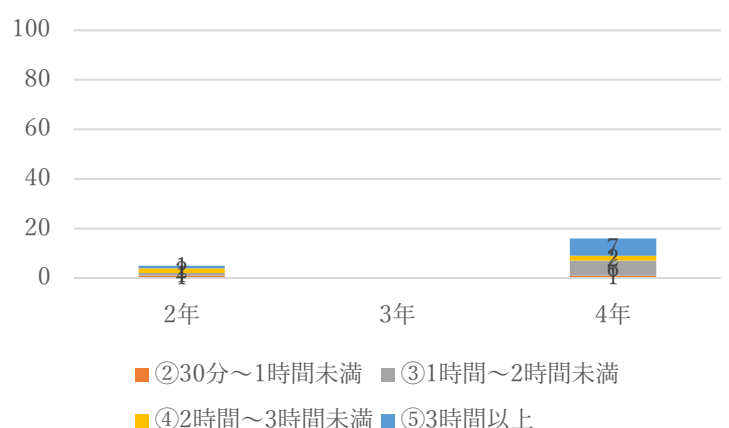
(NS)



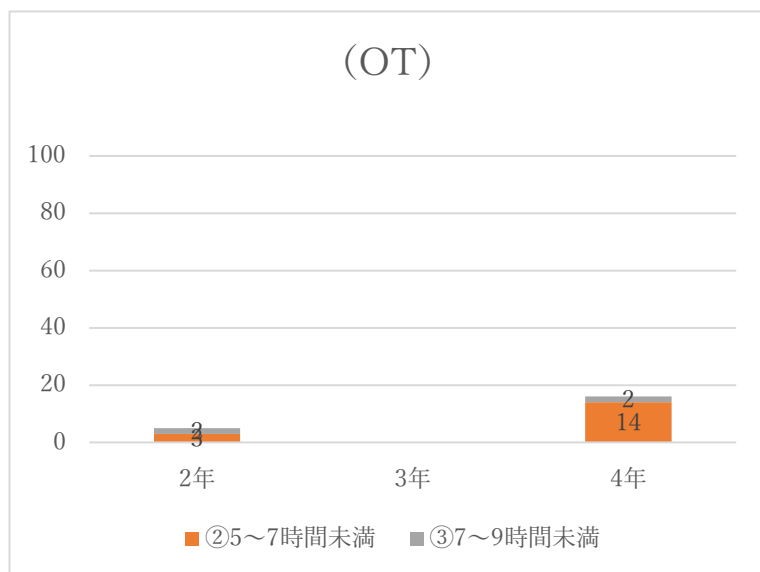
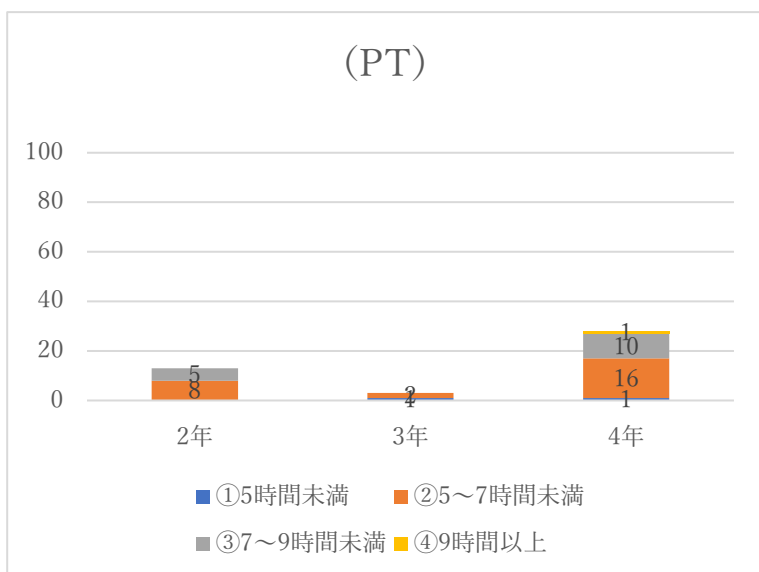
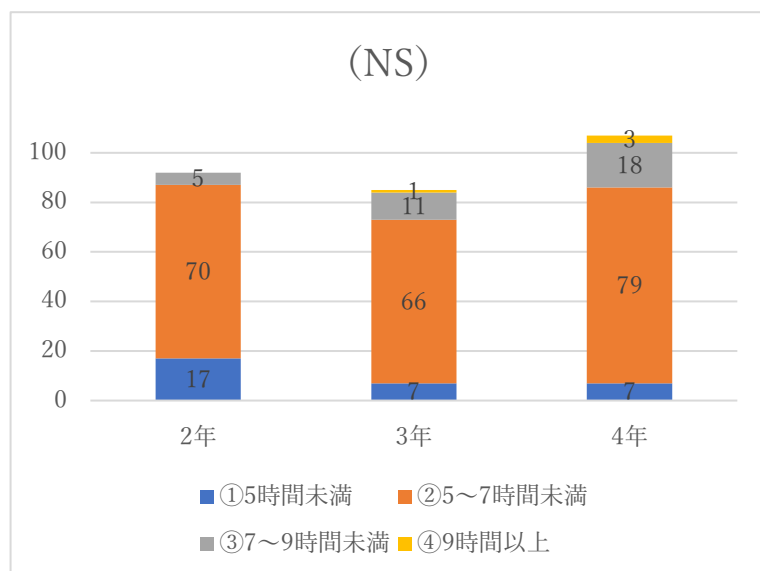
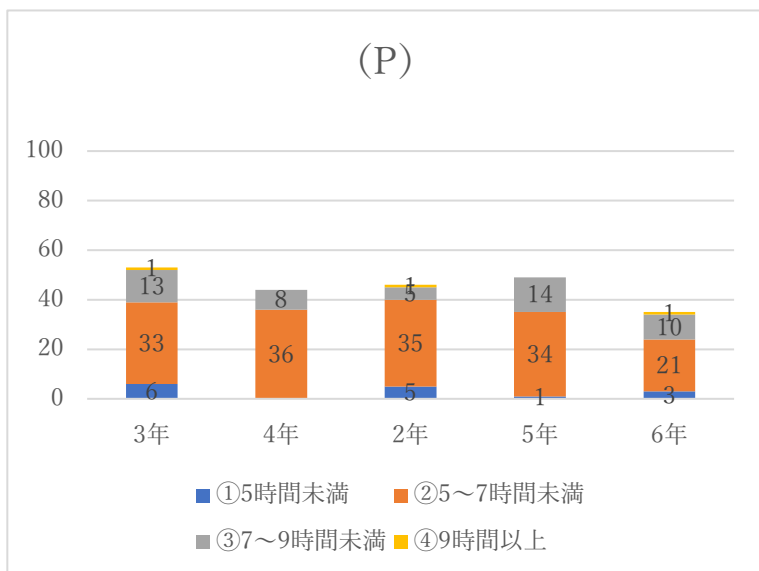
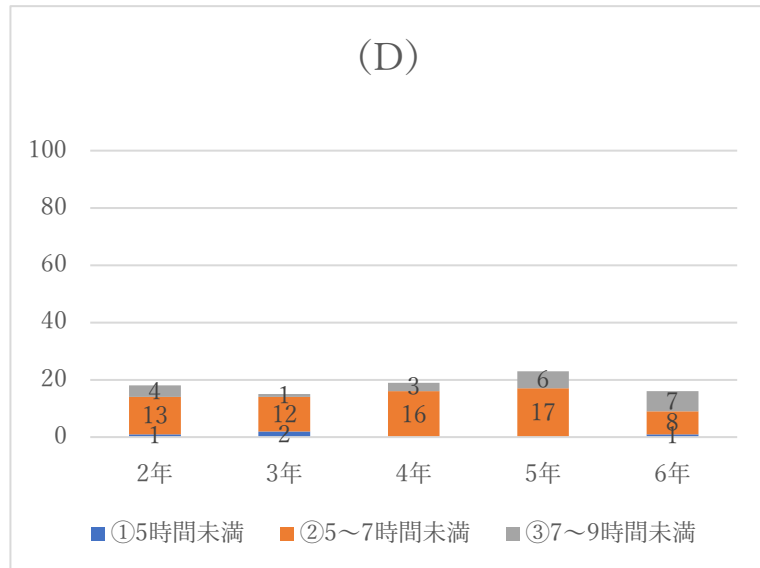
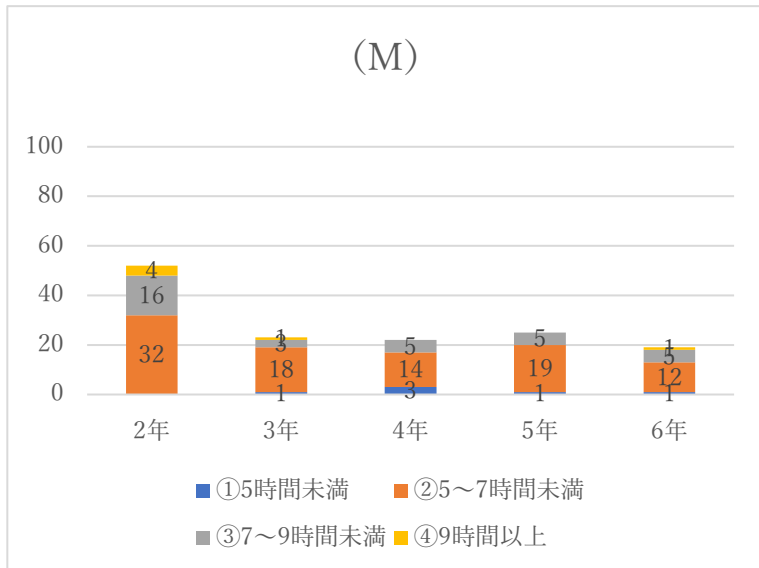
(PT)



(OT)

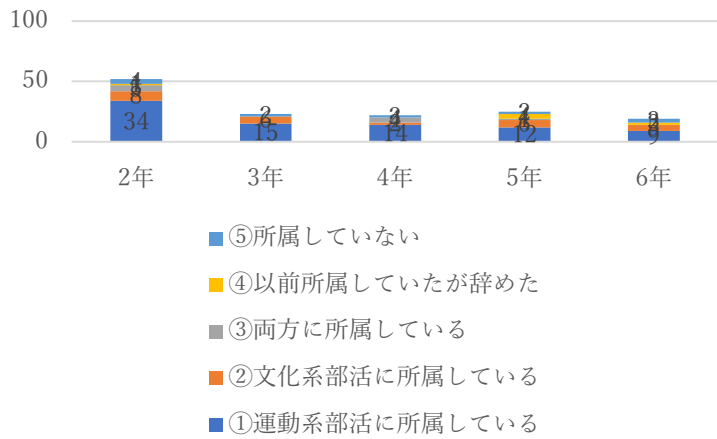


31.睡眠時間は1日あたりどれくらいですか？

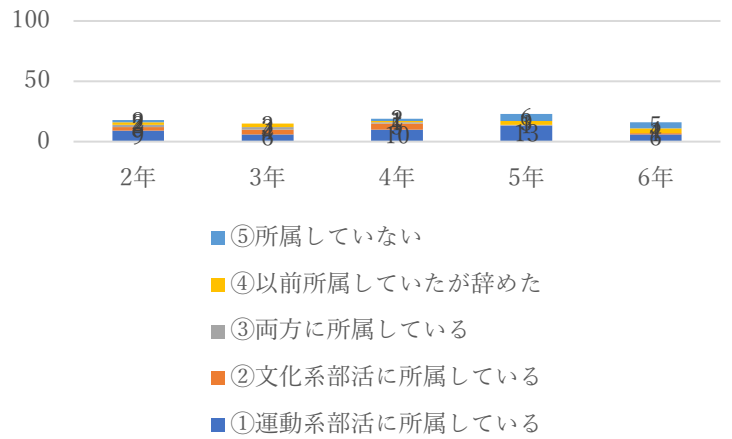


32.部活に所属していますか？

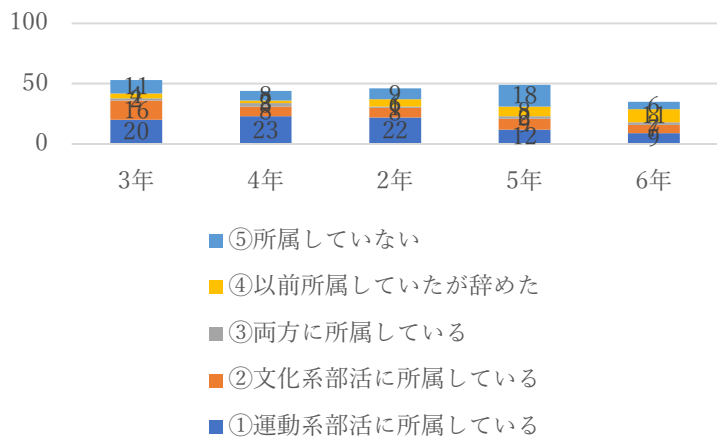
(M)



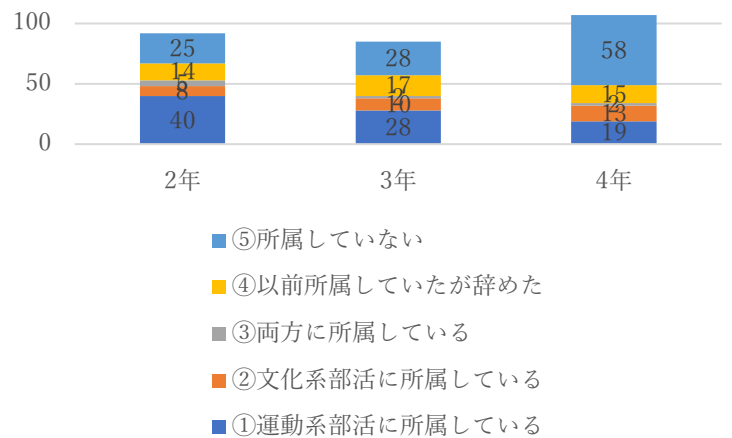
(D)



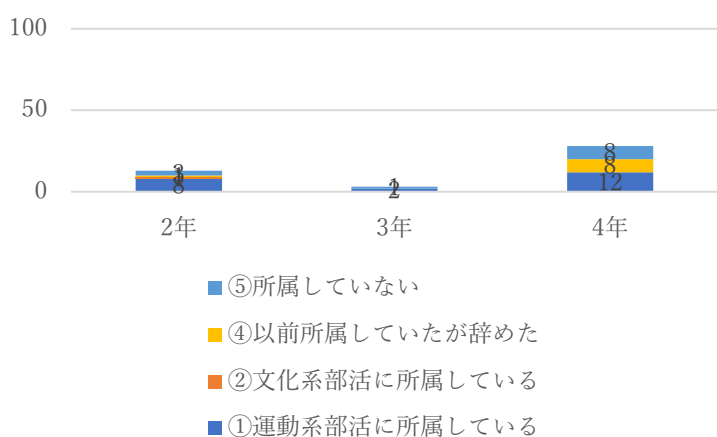
(P)



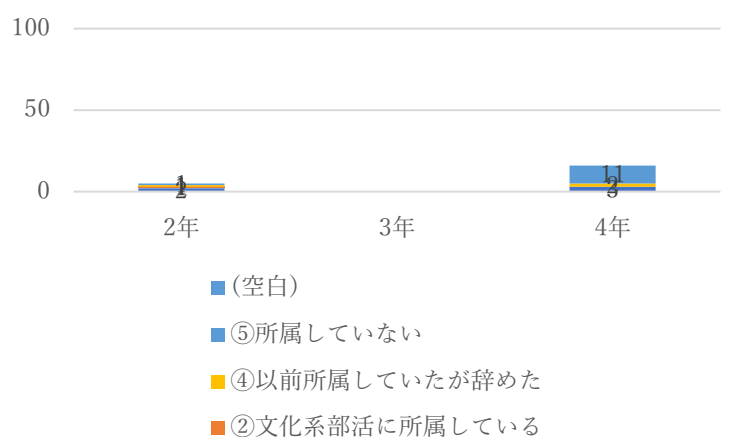
(NS)



(PT)

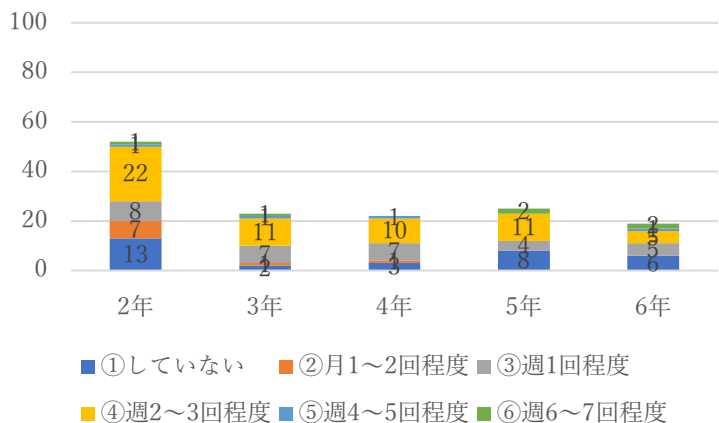


(OT)

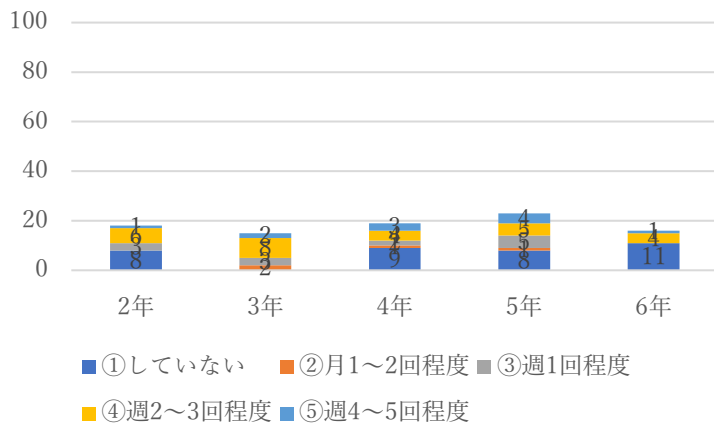


33.アルバイトはどのくらいしていますか？（長期休暇以外で最も多い時期）

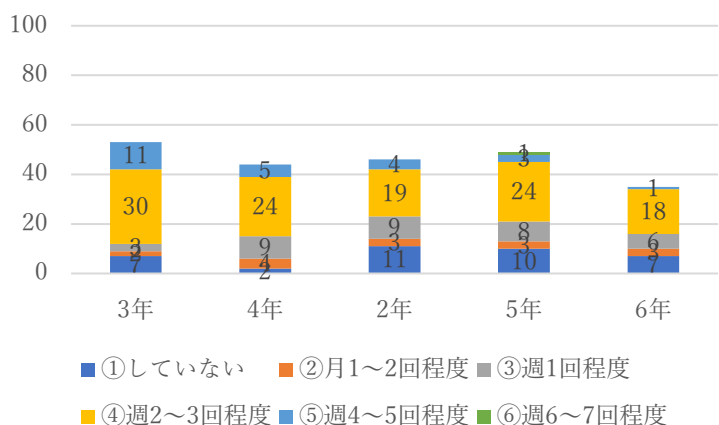
(M)



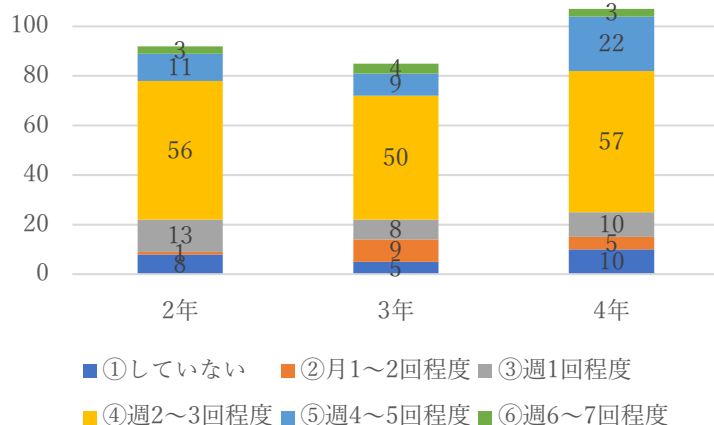
(D)



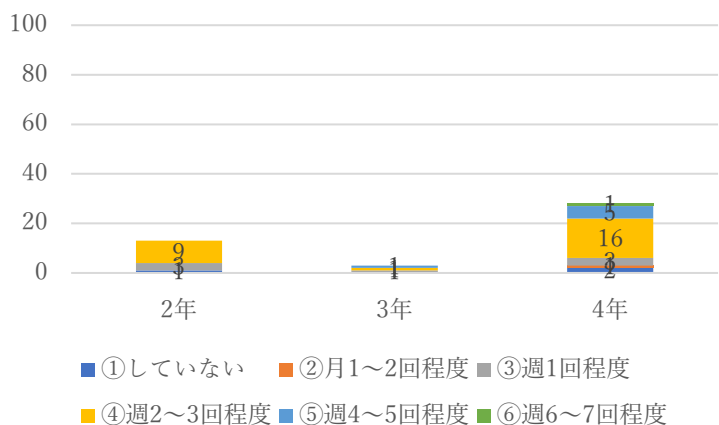
(P)



(NS)



(PT)



(OT)

